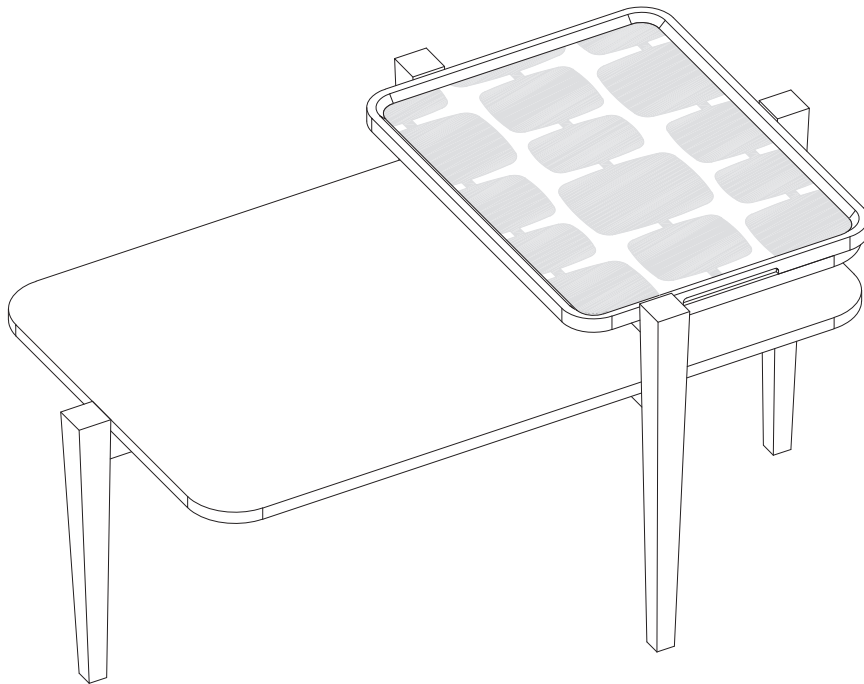


# Lohko

 habitat



## Spare Parts

 [www.argos-support.co.uk](http://www.argos-support.co.uk)

 [Help@ClickSpares.co.uk](mailto:Help@ClickSpares.co.uk)

 0370 112 1928

## Customer Support

 0345 640 2020



# Safety and Care Advice

---

## Product Details

Scion Lohko Coffee Table with Tray / 4013608

## IMPORTANT, RETAIN FOR FUTURE REFERENCE: READ CAREFULLY.

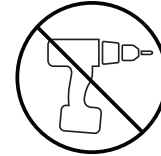
- Keep children and animals away from the work area, small parts could choke if swallowed.

- Make sure you have enough space to layout the parts before starting.

- This product has been constructed to be used in the domestic environment only and not for commercial purposes.

- Assemble the item as close to its final position (in the same room) as possible.

- Assemble on a soft level surface to avoid damaging the unit or your floor.



- We do not recommend the use of power drill/drivers for inserting screws as this could damage the unit. Only use hand screwdrivers.

- Parts of the assembly will be easier with 2 people.

- Dispose of all packaging carefully and responsibly.

## Care and maintenance

---

- Only clean using a damp cloth and mild detergent. Do not use abrasive cleaners.

- Use a dry cloth to clean the product, furniture polish is not recommended.

- From time to time check that there are no loose screws, nuts or bolts. If there are please re-tighten.

- This product should not be discarded with household waste. Take to your local authority waste disposal centre.

## Additional Guidance

---

- Assemble all parts and bolts loosely during assembly, only once the product is complete should you fully tighten the bolts.

- Regularly check and ensure that all bolts and fittings are tightened properly.

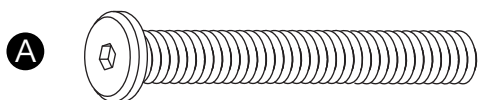
- Maximum loading weight 25kg

- This product is compliant EN12521

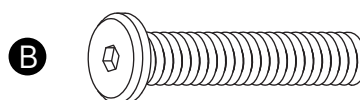
# Fittings (Shown to scale)

---

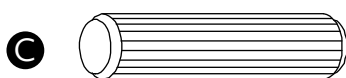
## Bag 1



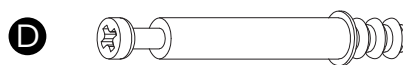
M6\*45mm Bolt x 8



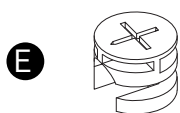
M6\*30mm Bolt x 4



30mm Wooden Dowel x 2



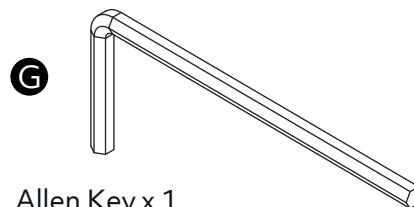
35mm Metal Dowel x 3



Locking Nut x 3



Ø15mm Felt Pad x 4



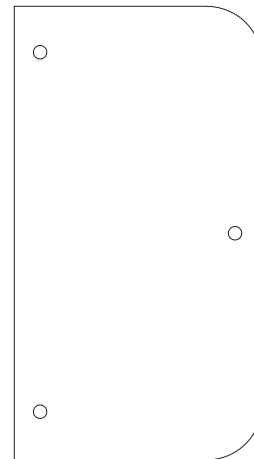
Allen Key x 1

# Panels

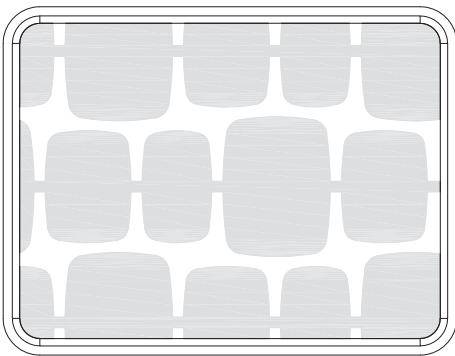
---



**1** Large Panel x1  
(840 x 495mm)



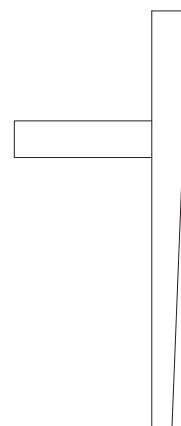
**2** Small Panel x1  
(495 x 270mm)



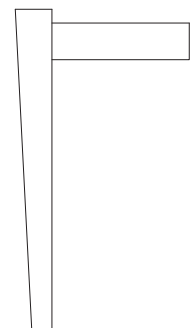
**3** Tray x1  
(495 x 380mm)



**4** Leg Frame x1  
(575x 455mm)

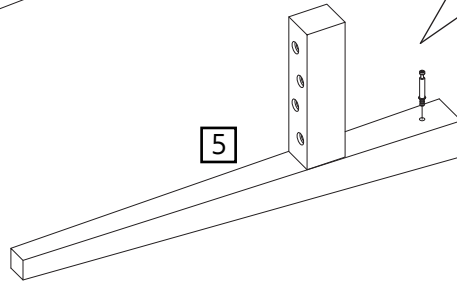
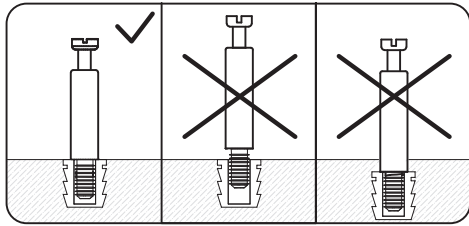
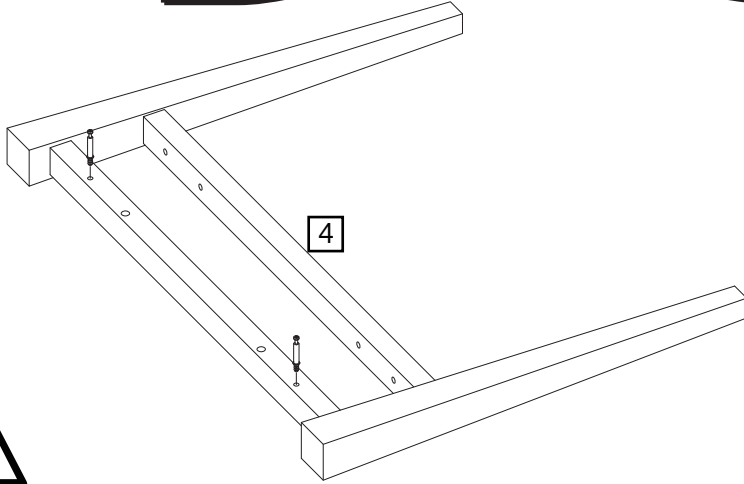
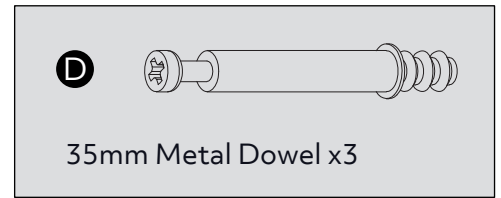
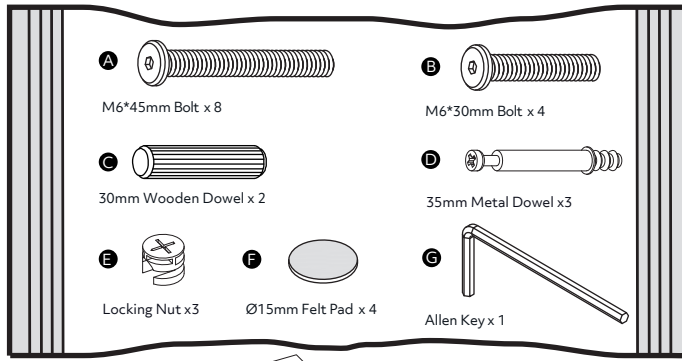


**5** Leg x1  
(455x 190mm)

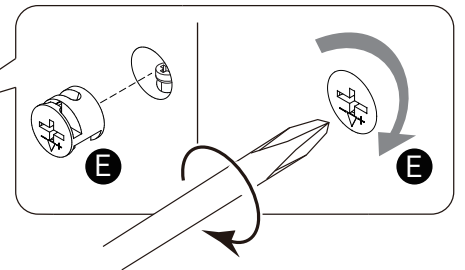
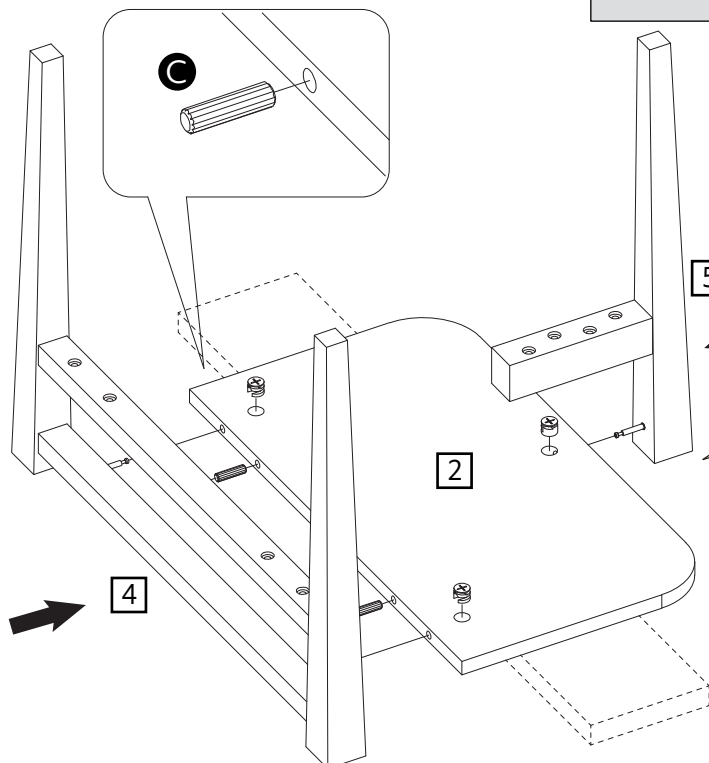
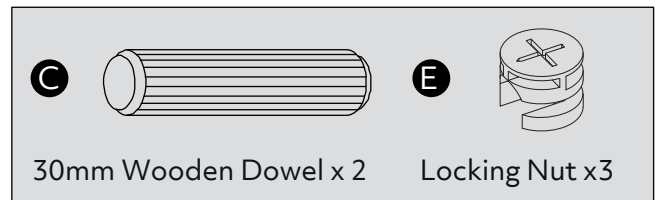


**6** Leg x1  
(350x 190mm)

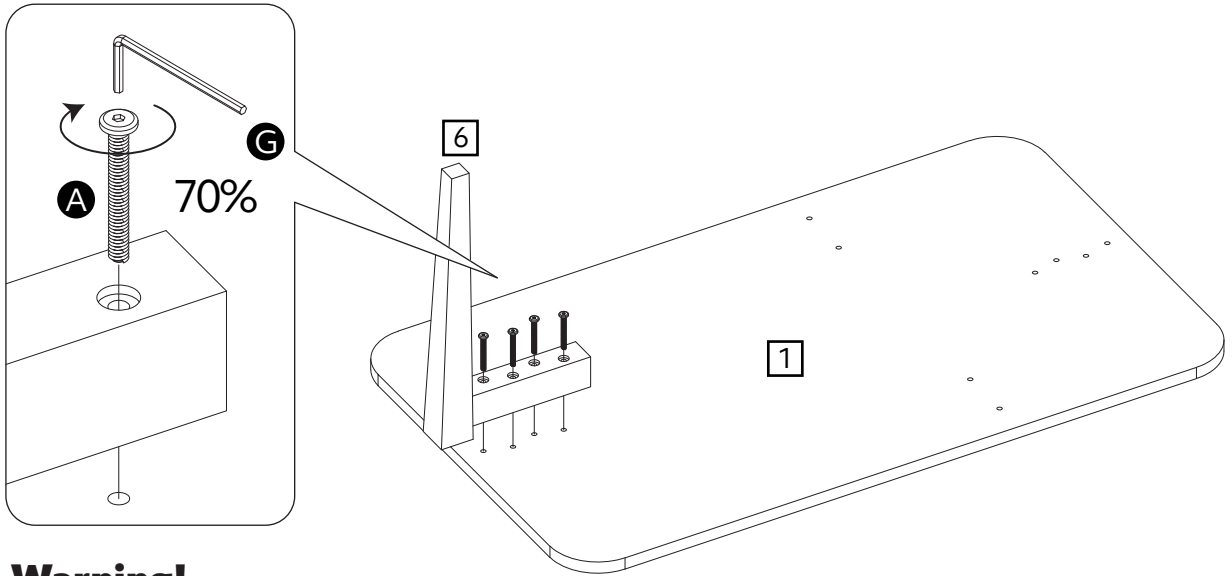
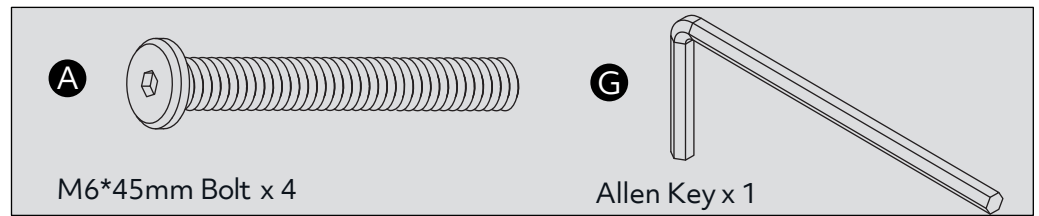
# 1



# 2



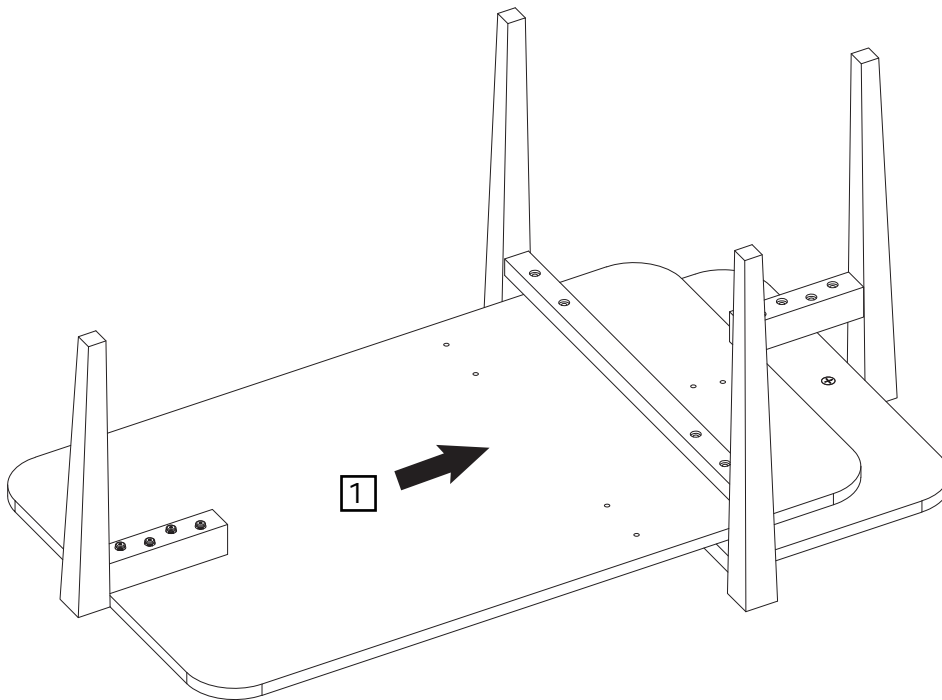
# 3



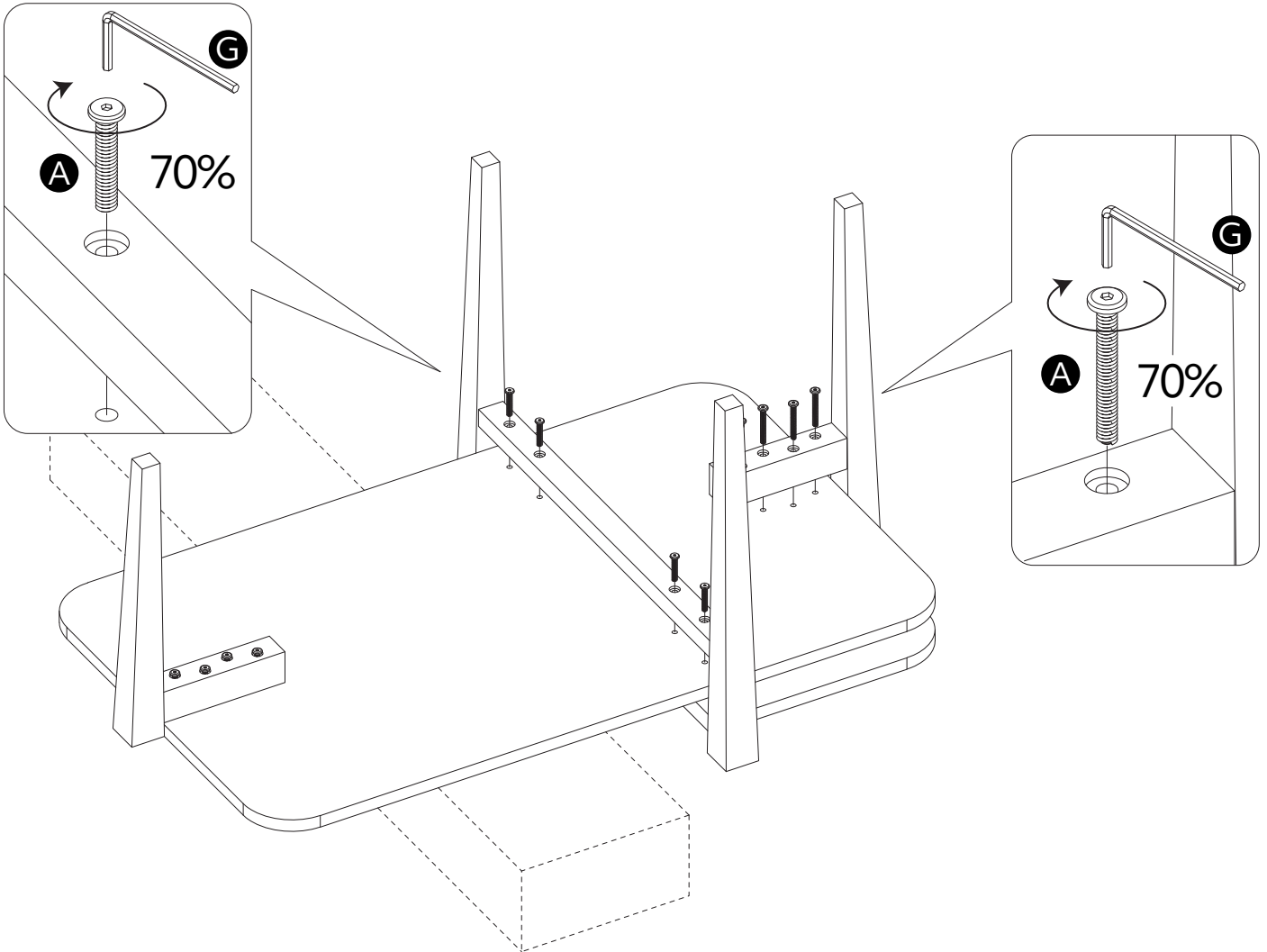
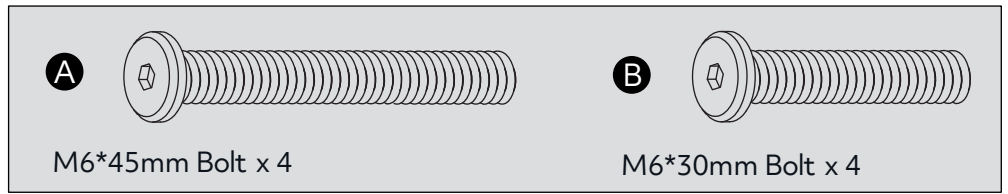
## Warning!

Please do not fully tighten the bolts in the step.

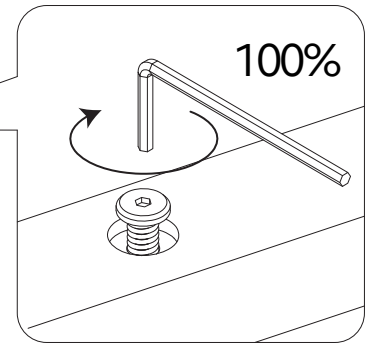
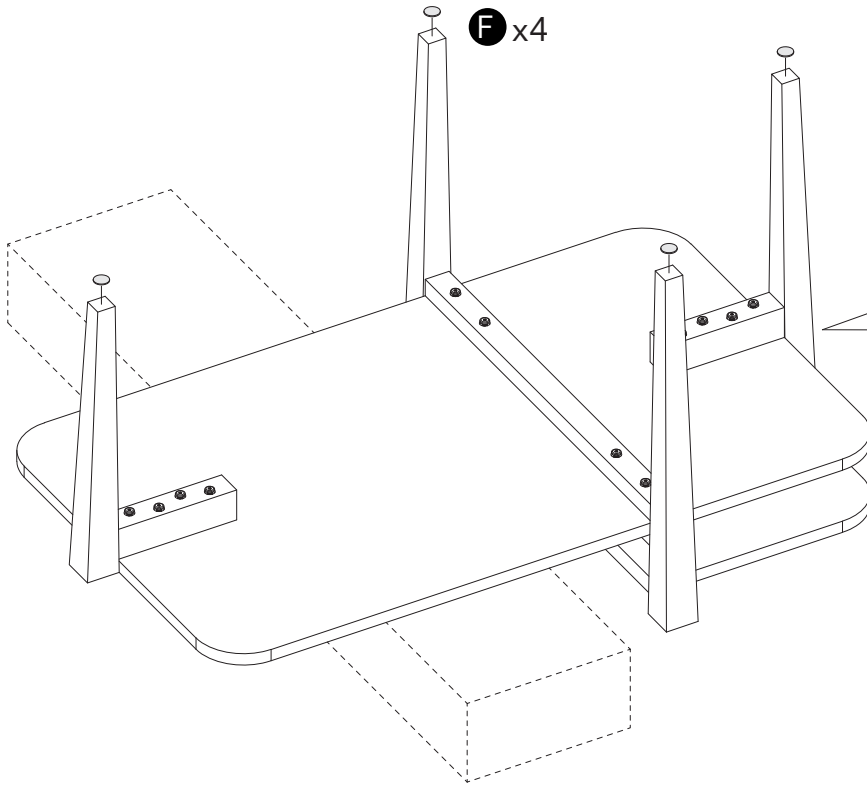
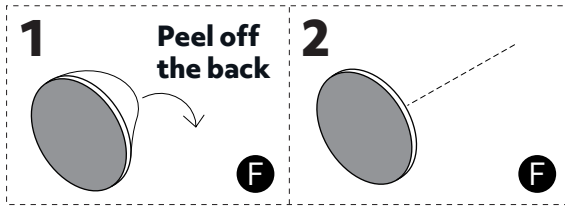
# 4



# 5

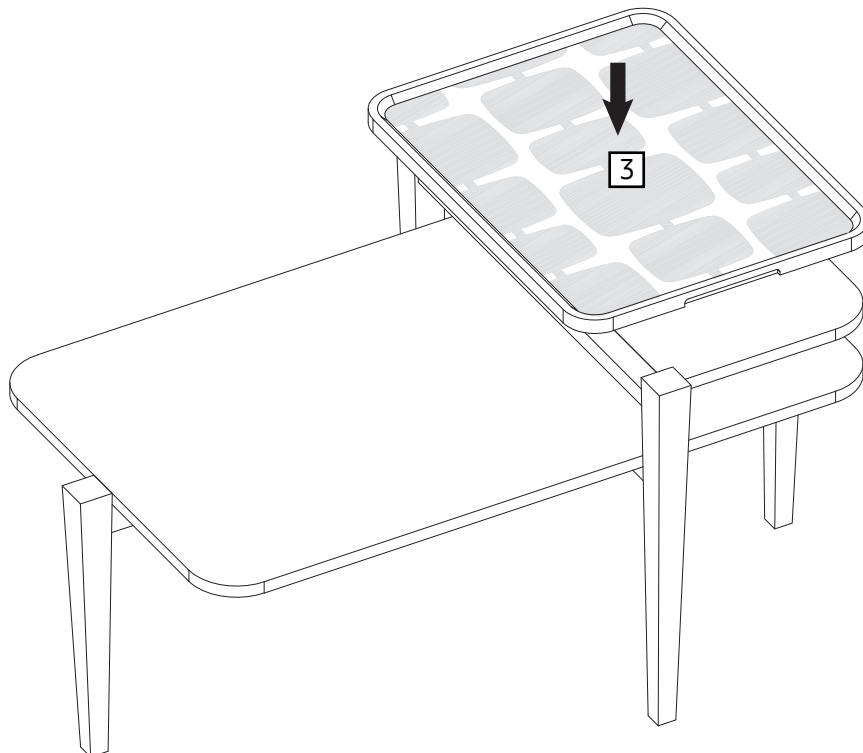


# 6



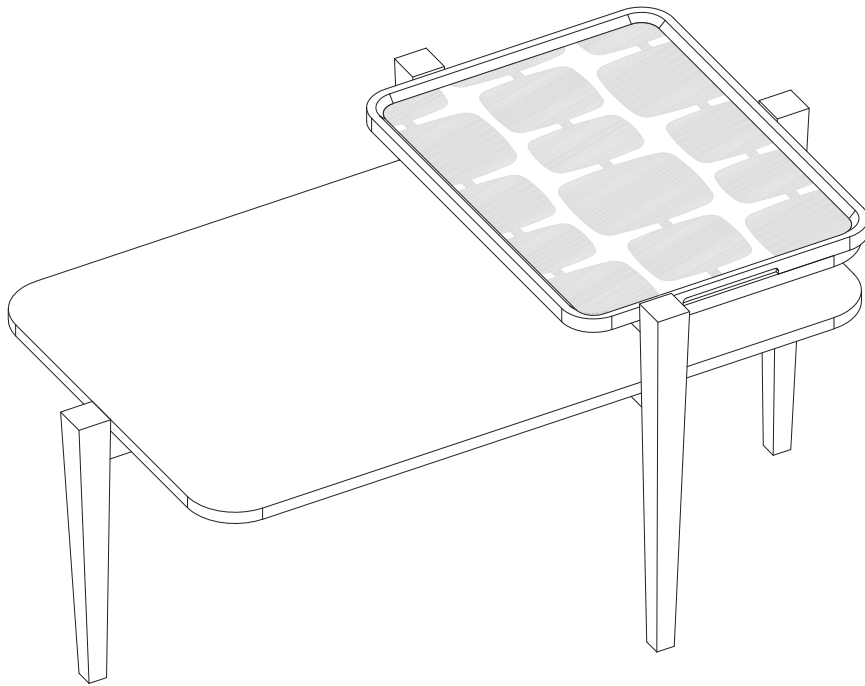
**Warning!**  
Fully tighten all the bolts .

# 7





# 9



Assembly is complete.