

### User Instructions

This is the challenge! There is also a special spinner on the board. If a playing piece lands on a red arrow space, place it on the spinner, spin to decide if you have gained or lost.

Players must throw an exact number to reach home. If the number is greater than required, miss a turn.

If you land on a space already occupied, you must jump over to the next available space.

### Winning the Game

The first player to race round the board to reach home is the winner.

### Care and Maintenance

#### General

This 3D Snakes & Ladders game has been designed and manufactured with quality materials and craftsmanship. With a little care it will provide players with many years of fun and enjoyment.



**WARNING! Not suitable for children under 3 years due to small parts and small balls, choking hazard**

If you need help or have damaged or missing parts, call the Customer Helpline: 0345 640 0800  
Produced for Chad Valley Toys: Argos Limited, 489 - 499 Avebury Boulevard, Central Milton Keynes, MK9 2NW. [www.argos.co.uk/chadvalley](http://www.argos.co.uk/chadvalley)  
Made in China

4

### Safety Information

**Important** – Please read these instructions fully before use

#### General Safety

3D Snakes & Ladders should be played on a level surface such as a table. The dice and playing pieces which are small balls, should be kept away from children under 36 months because they could be a choking hazard.

WARNING: Do not place any foreign objects or missiles into the flipper.

#### Before Use

Check contents of the game is complete.

#### Contents

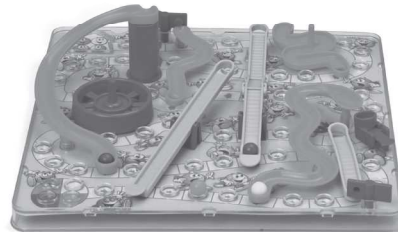
Please check you have all the parts listed below.

- 1 3-D Action game board
- 1 Dice
- 4 Ball playing pieces

2

# 3D SNAKES & LADDERS

Assembly & User Instructions - Please keep for future reference



#### Important

Age: 4+  
Players 2-4

**Important** – Please read these instructions fully before assembly or use

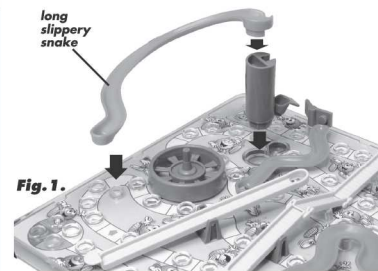
These instructions contain important information which will help you get the best from your product and ensure safe and correct assembly use and maintenance.

Issue 1 - 25/4/14

### Assembly Instructions

#### Setting Up

Assemble the long slippery snake as shown in Fig.1. Place game on a flat level surface.



### User Instructions

#### Object of the Game

Be the first to race around the board to reach home.

#### Playing the Game

Each player chooses a coloured playing piece of their choice and places it on the start position.

Each player throws the dice. The player with the highest number begins.

In their turn, players throw the dice and move their playing piece the number of spaces indicated. If the playing piece finishes at the bottom of a ladder, you must climb up to the top. If a playing piece falls off, it must be returned to the start. If the playing piece finishes at the head of a snake, you must slide down to the bottom. Again be careful. If the playing piece falls off you must return to the start. Each of the ladders and snakes has a different way to climb up or slide down.

3