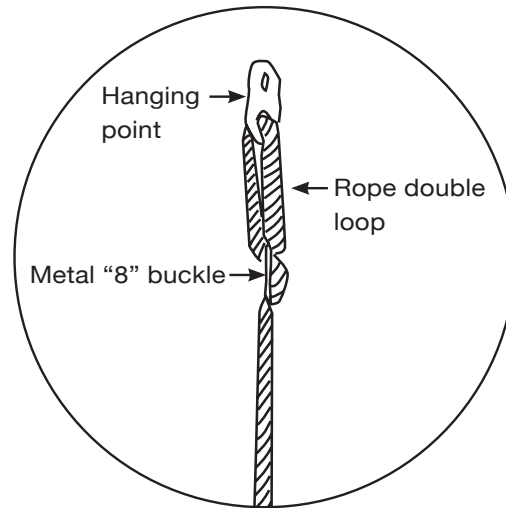
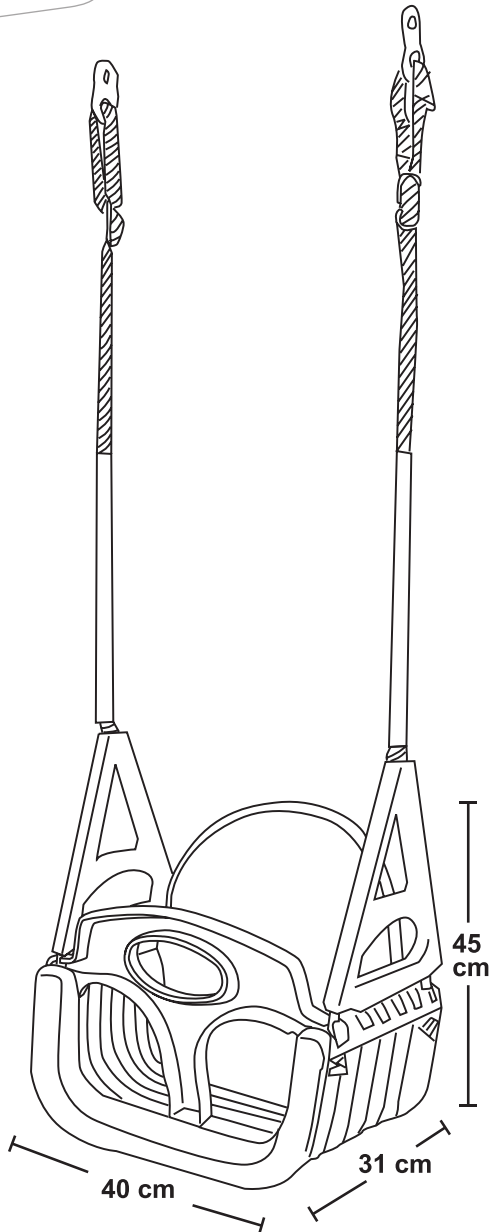


Multi Stage Swing

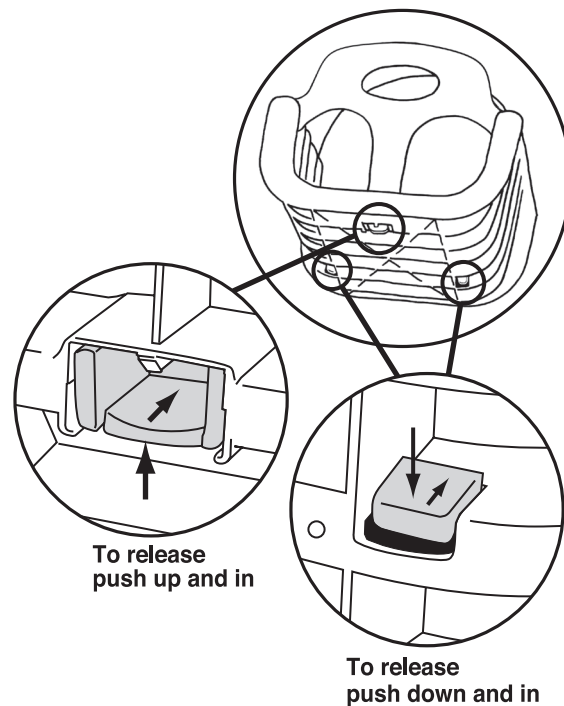
Assembly & User Instructions - Please keep for future reference

367/0736



ROPE ADJUSTMENT:

1. Adjustment of swing height is achieved by changing the size of the rope's double loop.
2. Adjusting the double loop is done by pulling the rope via the metal "8" buckle, enlarging or reducing the double loop.
3. For a higher swing the rope's double loop should be as big as possible, for low height pull the rope and set the rope's double loop to as small as possible.
4. After adjusting the height, make sure swing is leveled.
5. Always make sure you set the swing's height to the youngest user's dimensions



Important

Age: 9+ months

Important - Please read these instructions fully before assembly or use

These instructions contain important information which will help you get the best from your product and ensure safe and correct assembly, use and maintenance.

If you need help or have damaged or missing parts, call the **Customer Helpline: 01291 650581**

- Stage 1: for ages 9-18 months.
- Stage 2: for ages 18-36 months
- Stage 3: for ages 3-5 years.
- Stage 4: for ages 5 years and up.

- Warning! for domestic use only.
- Warning! for outdoor use.
- Warning! Max load 30 kg.
- Warning! 9 months and above.

WARNINGS!

Do not use the Multi-Stage swing until it has been properly installed by an adult according to these instructions.

Be sure children are dressed appropriately to avoid potential hazards while using the swing.

Children should not wear loose fitting clothing such as ponchos or scarfs.

Place only one child at a time on the Multi-Stage swing.

Never leave child unattended while on the Multi-Stage swing.

For stages 3 or 4: Disconnecting the "T-Bar" should be only when the child is not seated.

When the child is seated in the swing ensure that the release levers are fully locked.

This swing should be installed over soft ground-i.e. not concrete or tarmac.

IMPORTANT! for stages 1,2 and 3 please carefully adjust and buckle the safety belt.

When belt buckle is locked, please secure belt's free end with the plastic ring.

INSTALLATION INSTRUCTIONS:

Place on a level surface at least 2 meters from any structure or obstruction such as a fence, garage, house, overhanging branches, laundry lines or electrical wires.

When assembling, suspend this swing from points suitable for bearing the weight of the intended user and by secure means.

The maximum reachable height of the structure should not exceed 2.5 meters from ground, the recommended height is 2.2 meters from the ground.

The minimum clearance between any multiple swings and between swings and their adjacent structures should not be less than 30 cm.

The minimum clearance between the swing and any members suspended by a single suspension point (e.g. climbing rope) should not be less than 45 cm.

The swing base should be suspended at least 35 cm from ground level.

To achieve lateral stability of the swing, the item should be suspended at points which are separated by a minimum distance calculated as follows:

Distance = (0.04 x the height of suspension from ground) + the width of suspension at the seat 37 cm.

MAINTENANCE:

At the beginning of each season check swing seat, ropes and other means of attachments for evidence of deterioration.

Check nuts and bolts for tightness. Regular checks of the main suspension points should be carried out

Check all coverings for both bolts and sharp edges, replace when required.

otherwise this may result in the product overturning or in a fall.

Changes to the original swing (for example the adding of an accessory) shall be carried out according to the instructions of the retailer of the original swing.

Replace when required in accordance with the manufacturer's instructions.



*If you need help or have damaged or missing parts, call the **Customer Helpline: 01291 650581***

Produced for Chad Valley Toys. Country of origin: Israel.

Address: 489 - 499 Avebury Boulevard, Central Milton Keynes, MK9 2NW.