

# INSTRUCTION MANUAL – RP350-BS FILTER PUMP

DISTRIBUTED BY: POLYGROUP LIMITED (MCO)  
Avenida Xian Xing Hai, Centro Golden Dragon, 11 Andar M, Macau

## 1. SAFETY INSTRUCTIONS: EXTREMELY IMPORTANT!! Read and follow all instructions. Please retain this information for future reference.

- 1.1 **WARNING!** Following the pool manufacturer's instructions and install your pool properly before installing this filter pump.
- 1.2 **WARNING!** Adult assembly required.
- 1.3 **WARNING!** Before starting, check all pipes and accessories for correct installation and reliable connection.
- 1.4 **WARNING!** Do not bury the electric cords. Place the cords where lawn mowers, hedge trimmers and other equipment will not damage them.
- 1.5 **WARNING!** Do not use an extension cord to connect unit to electric supply.
- 1.6 **WARNING!** The pool must be at least 2 meters away from the power outlet (receptacle).
- 1.7 **WARNING!** Prevent children from using the filter pump without an adult's supervision.
- 1.8 **WARNING!** Do not use the filter pump when pool is empty. This pump is designed only for dismountable storable pools above the ground, not for permanently installed pools. Improper use may lead to overheating and permanent damage of the product.
- 1.9 **WARNING!** To avoid the risk of electric shock, always be aware of damaged cords.
- 1.10 **WARNING!** The power cord of the transformer and the filter pump cannot be replaced. If the cord is damaged, the transformer and the filter pump should be disposed of.
- 1.11 **WARNING!** To avoid the risk of electric shock, connect the filter pump only to a receptacle protected by a Residual-current device (RCD). Contact a qualified electrician if you cannot verify that the receptacle is RCD protected. Use a qualified electrician to install the RCD.
- 1.12 **WARNING!** This appliance is not intended for use by persons (including children) with reduced physical, sensory or mental capabilities, or lack of experience and knowledge, unless they have been given supervision or instruction concerning use of the appliance by a person responsible for their safety.
- 1.13 **WARNING!** Children should be supervised to ensure that they do not play with the appliance.
- 1.14 **WARNING!** The pump must not be used when people are in water.
- 1.15 **WARNING!** Filter system can be used as many hours as desired, but NEVER when the pool is occupied.
- 1.16 **WARNING!** Pollution of the liquid could occur due to leakage of lubricants.

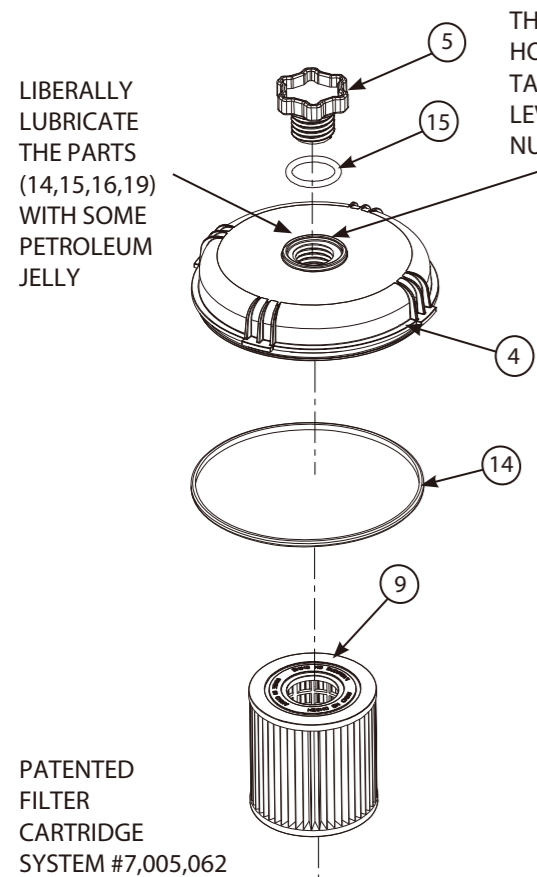
## 2. PUMP INSTALLATION INSTRUCTIONS

- 2.1 Take the water Intake and Return Hoses (6, 7) and remove the four Hose Clamps (8) from the hardware bag. Loosen the hose clamps and slide them over one end of each hose. Insert one hose onto the filter housing inlet and one hose onto the filter housing outlet. Tighten both Hose Clamps (8) on the filter housing.
- 2.2 Insert the Suction Fitting Base (10) and Suction Fitting Screen (11) into the outlet port of the pool wall. Mount the Intake Hose (6) on the outlet of the pool wall. Tighten the Hose Clamp. See FIG 1,3&4.
- 2.3 Insert the Suction Fitting Base (10) and Flow Diveter (12) to the inlet port of the pool wall. Mount the Return Hose (7) on the inlet of the pool wall. Tighten the Hose Clamp. See FIG 1,3&4.
- 2.4 Continue to fill the pool.
- 2.5 Once the pool is filled, position the Filter Assembly between the two fittings on the side of the pool. The water Intake Hose (6), coming from the top of the filter housing, should be facing towards the right and the water Return Hose (7), coming from the pump (on the lower part of the housing), should be facing towards the left. See FIG.3
- 2.6 Unscrew the Vent Screw (5) on the Seal Top (4) about 1-1/2 turns. NOTE: VENTING THE SYSTEM IS NECESSARY FOR AIR TO ESCAPE AS THE FILTER HOUSING FILLS WITH WATER.
- 2.7 When the system is full, water should be coming out of the groove of the vent screw. Hand-tighten the vent screw in the seal top until the O-Ring forms a seal around the screw and water stops coming out.
- 2.8 At this point, the filter system should be water-tight. Check all of the hoses and fittings, as well as the vent screw, to make sure that there is no water leak.
- 2.9 Start the pump by plugging into an electrical outlet.

## 3. FILTER CARTRIDGE CLEANING INSTRUCTIONS

**CAUTION: MAKE SURE THAT THE FILTER PUMP IS UNPLUGGED BEFORE COMMENCING ANY MAINTENANCE WORK TO AVOID RISK OF SERIOUS INJURY OR EVEN DEATH.**

- 3.1 You will need to clean the Filter Cartridge (9). First, unplug (turn off) the Electric Filter and loosen the Hose Clamps on the pool wall side. Then, remove the Suction Fitting (10,11) and the Return Fitting (10,12) from the Hose Connector (13) on the outlet and inlet ports respectively. Insert the Service Plug (17) and fully press them into these Hose Connector (13) to ensure a leak-proof fit. To vent the filter, slowly unscrew the Vent Screw (5). Press down with both hands and turn the Seal Top (4) counter-clockwise to remove it and the Filter Cartridge (9). After you have finished cleaning the filter cartridge, lubricate the O-Ring (14) generously with petroleum jelly and reassemble in reverse order.
- 3.2 The filter cartridge can be cleaned of coarse dirt and debris both inside and out using a garden hose, making sure that you wash between all of the pleats of the cartridge. If it is still dirty after this cleaning treatment, replace it. We recommend changing the filter every 2 weeks.
- 3.3 A spare "stand-by" Filter Cartridge (not included) is an excellent investment. It provides convenient way to continue filtering your pool while cleaning or replacing a dirty Filter Cartridge. Also, a well-maintained, clean cartridge ensures that your filter will always be able to operate at its peak efficiency.



No.	DESCRIPTION
1	PUMP MOTOR
2	PUMP RETAINING NUT
3	FILTER HOUSING
4	SEAL TOP
5	VENT SCREW
6	INTAKE HOSE
7	RETURN HOSE
8	HOSE CLAMPS
9	FILTER CARTRIDGE
10	SUCTION FITTING BASE
11	SUCTION FITTING SCREEN
12	FLOW DIVERTER
13	HOSE CONNECTOR (*Non - detachable)
14	O-RING (on seal top)
15	O-RING (on vent screw)
16	O-RING (on Hose Connections)
17	SERVICE PLUG
18	POOL WALL
19	O-RING (on Volute Housing)
20	PUMP MOUNTING SCREWS

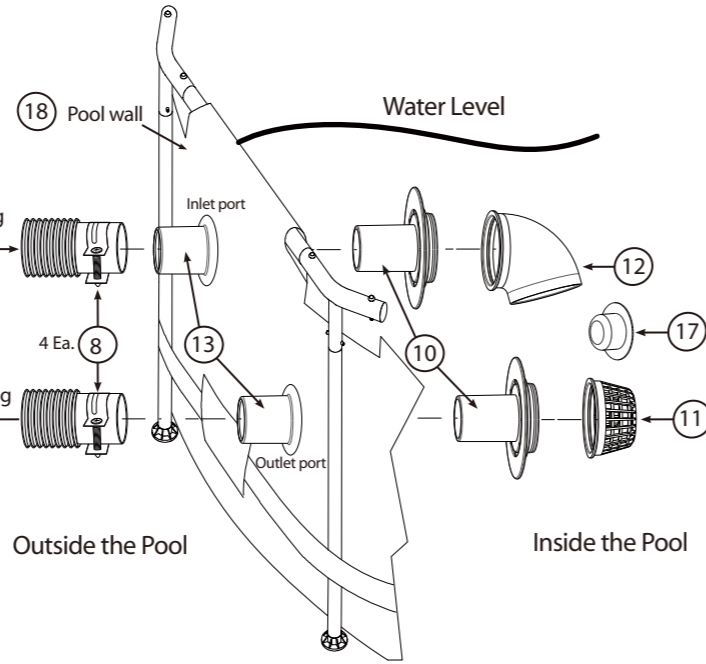
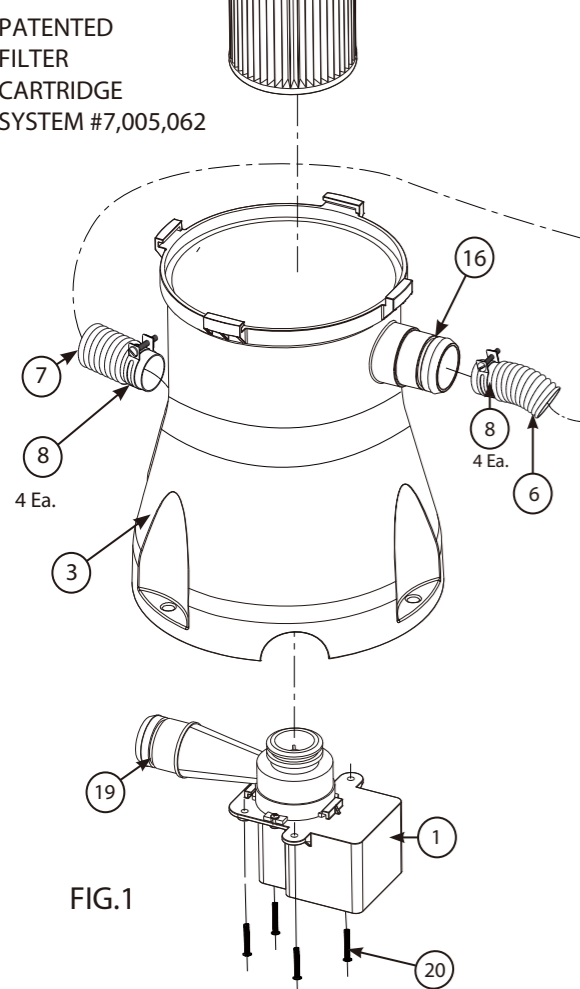


FIG.2

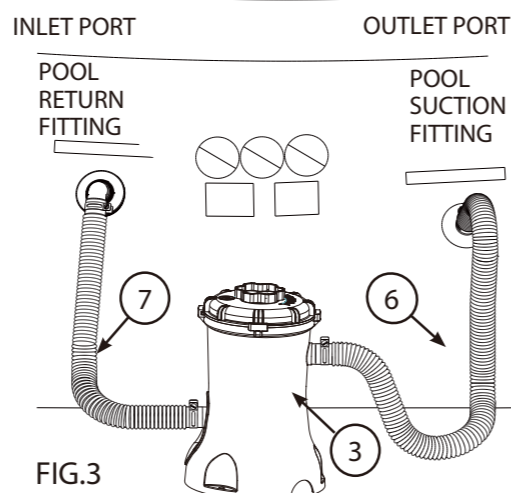


FIG.3

FIG.4 (FOR RING POOL)

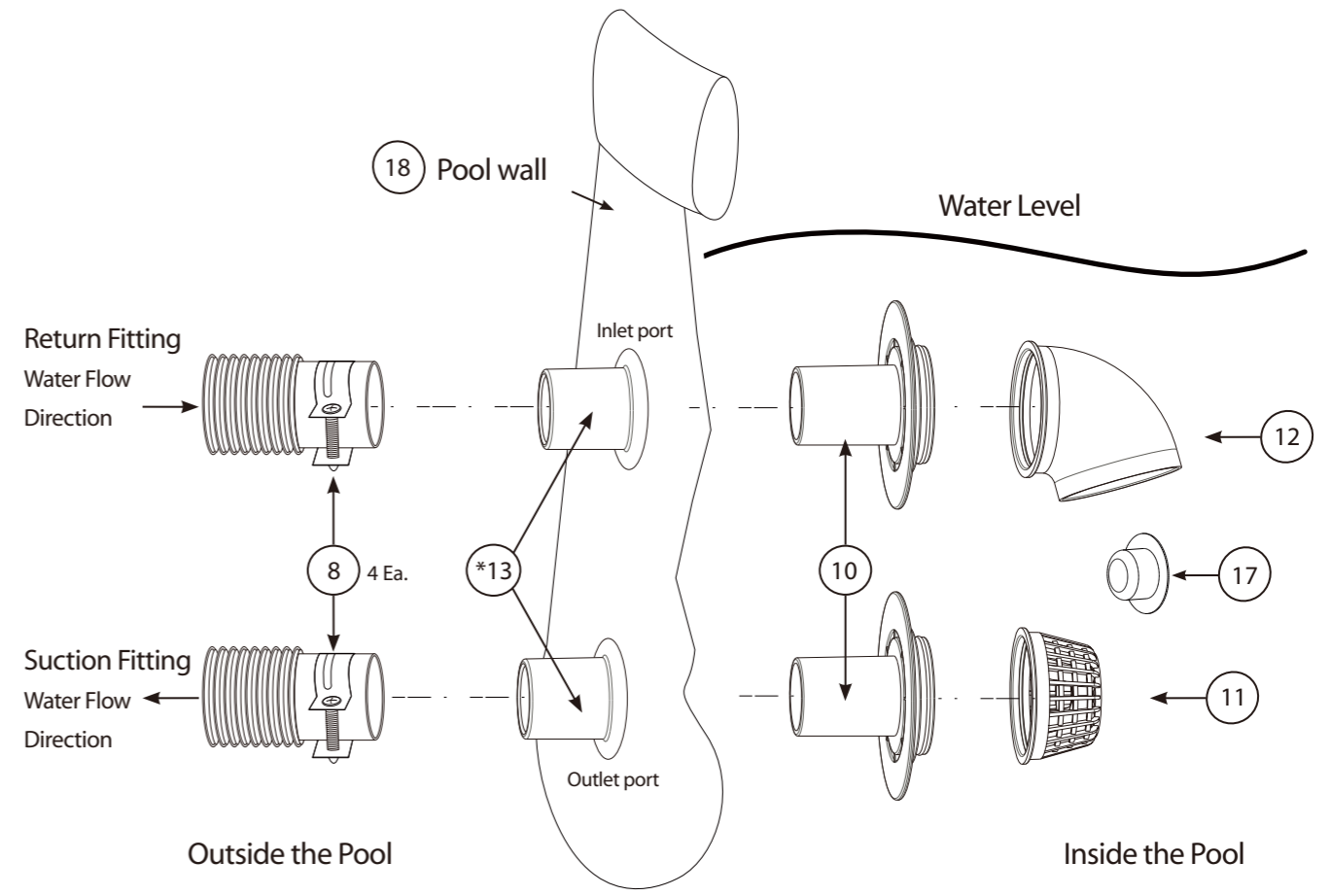
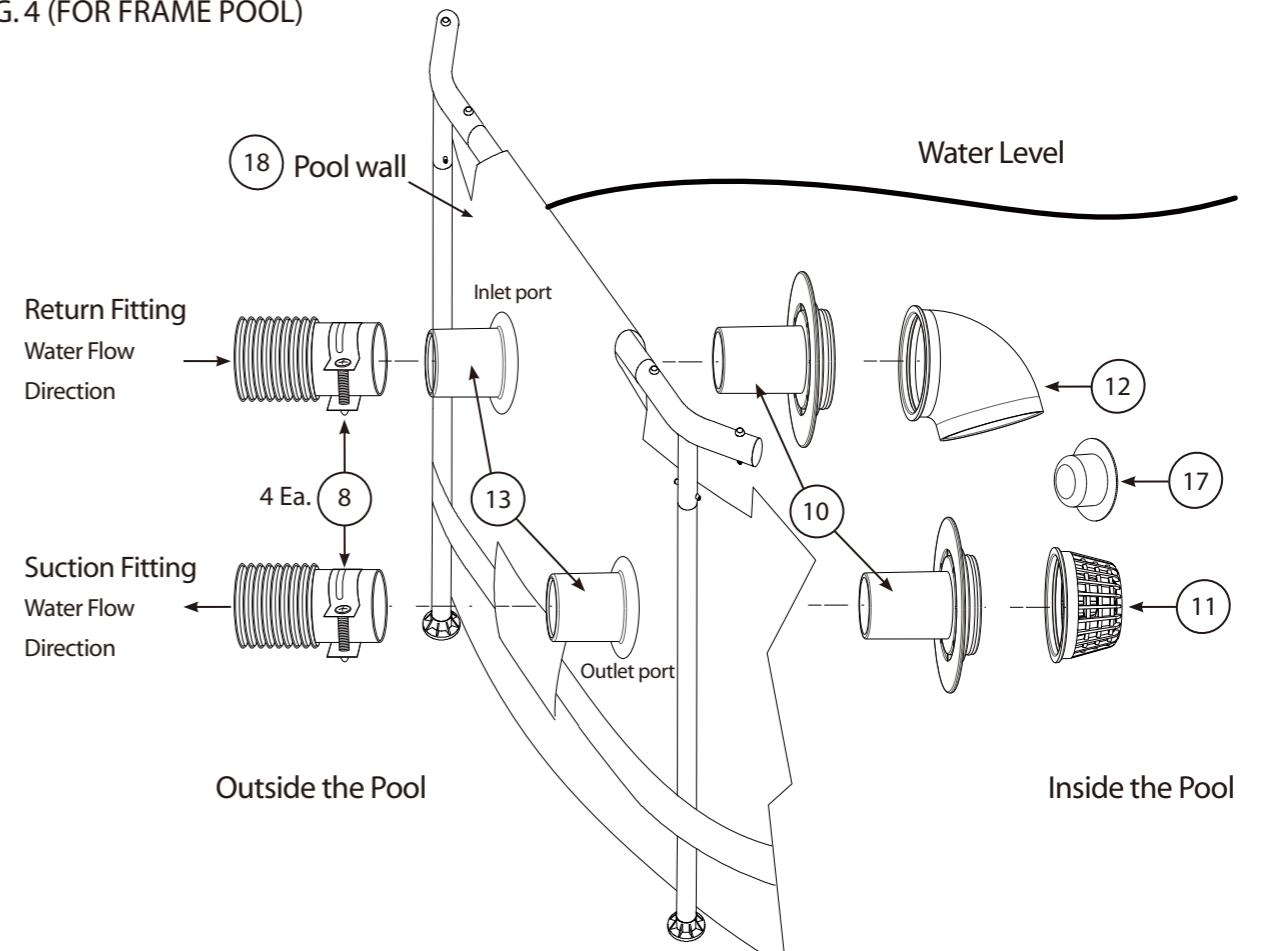


FIG.4 (FOR FRAME POOL)



KANDYTOYS EXETER EX5 1DR  
 Customer Service Representative: Polygroup The Hollow Ravensthorpe Northampton NN6 8EN  
 United Kingdom Helpline : 0844 7744888

#### 4. DISASSEMBLY AND STORAGE INSTRUCTIONS

**CAUTION: MAKE SURE THAT THE FILTER PUMP IS UNPLUGGED BEFORE COMMENCING ANY MAINTENANCE WORK TO AVOID RISK OF SERIOUS INJURY OR EVEN DEATH.**

- 4.1 GENERAL INFORMATION: The pool must be stored away if temperature is expected to fall below 4°C.
- 4.2 All parts should be cleaned using mild soap and lukewarm water only. DO NOT use detergent or hot water.
- 4.3 Make sure that all parts are dry before storing them to prevent mildew from forming.
- 4.4 Store all parts in a dry, heated location where temperature does not fall below 4°C or exceed 51°C.
- 4.5 Failure to follow the storage instructions could cause damage to your pool and void your warranty.
- 4.6 YOU MUST FOLLOW THE ASSEMBLY INSTRUCTIONS TO REASSEMBLE YOUR POOL FOR THE NEXT SEASON. The site for the pool must be cleared and leveled.
- 4.7 Do not leave an above-ground pool outside when empty.

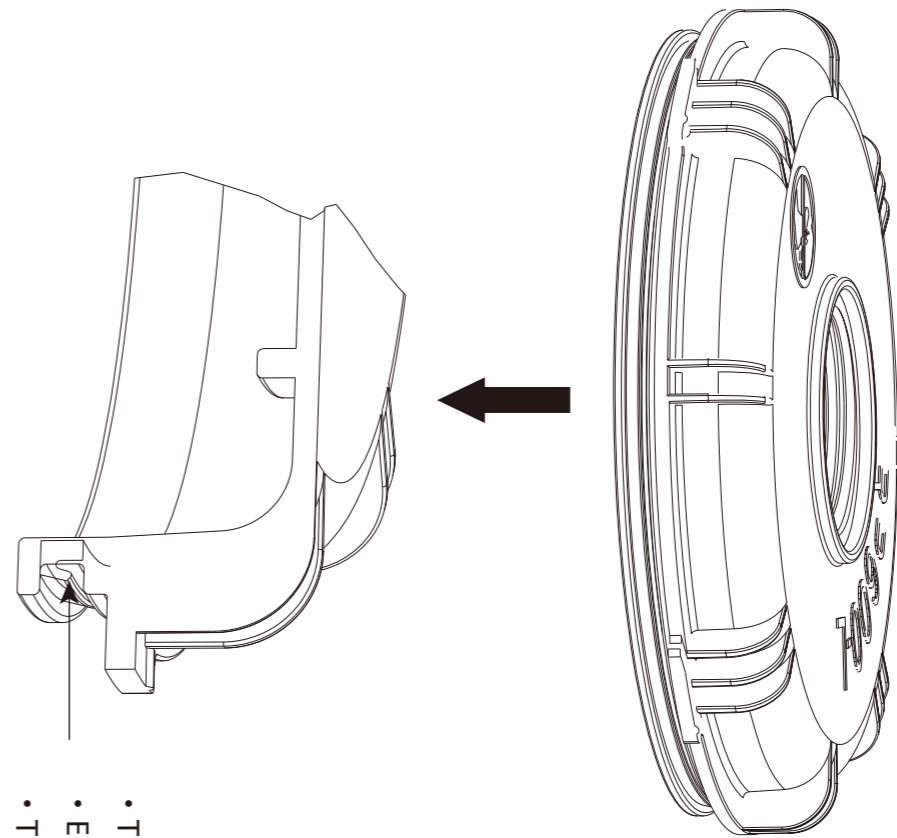


This marking indicates that this product should not be disposed with other household wastes throughout the EU. To prevent possible harm to the environment or human health from uncontrolled waste disposal, recycle it responsibly to promote the sustainable reuse of material resources. To return your used device, please use the return and collection systems or contact the retailer where the product was purchased. They can take this product for environmental safe recycling.

Electrical product waste should not be discarded with household waste, use separate collection facilities. Contact your local government or council for information regarding the collection systems available.

Maximum Water Temperature: 35 degree

Model	Voltage/Frequency	Wattage	Water Proof Level	Filter Cartridge
RP350-BS	220~240V/50HZ	20W	IPX7	D Type



- The Groove on Filter Case O-Ring (14) must face upward.
- El Groove en caja del filtro O-Ring (14) debe quedar hacia arriba.
- The Groove sur boîtier filtre O-Ring (14) doit faire face à la hausse.

**IMPORTANT:** Ensure the groove on Filter Case O-Ring (14) must face upward and seat in the slot of the Seal Top (4) properly.

**IMPORTANT:** Asegúrese de que la ranura de la caja del filtro O-Ring (14) debe quedar hacia arriba y el asiento en la ranura de la tapa del sello (4) correctamente.

**IMPORTANT:** S'assurer que la rainure sur boîtier filtre O-Ring (14) doit faire face à la hausse et le siège dans la fente du joint supérieur (4) correctement.