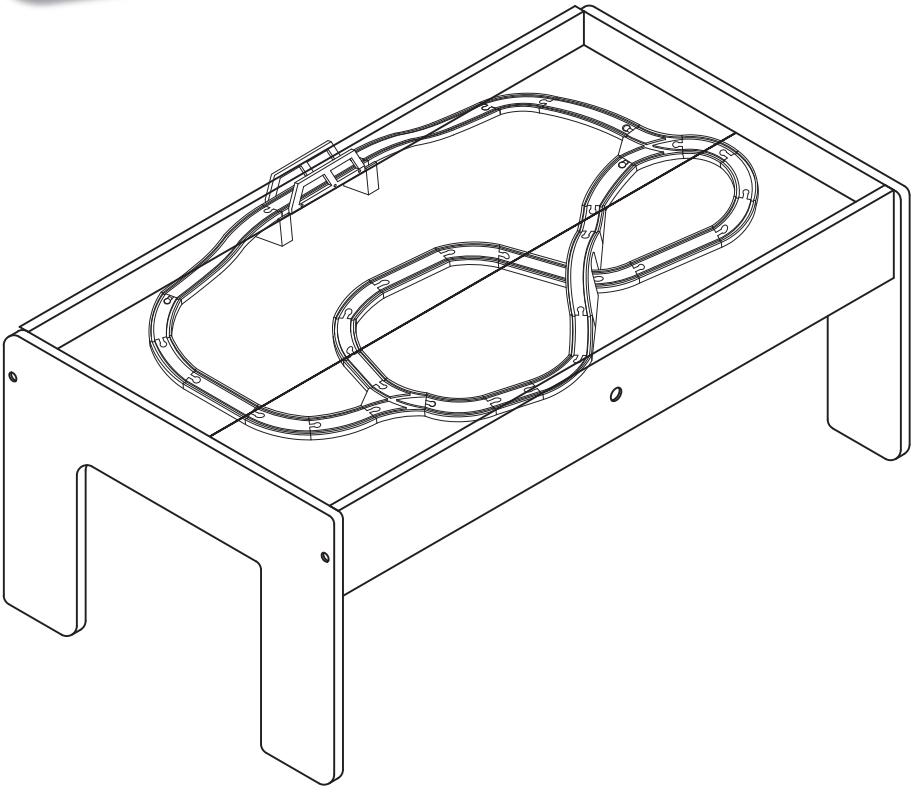


Wooden Table & 80pcs Train Set

Assembly & User Instructions - Please keep for future reference 349/8468



Table & Tracks Assembly



Important

Age: 3 + years

Important – Please read these instructions fully before assembly or use

These instructions contain important information which will help you get the best from your product and ensure safe and correct assembly, use and maintenance.
If you need help or have damaged or missing parts, call the Customer Helpline: 08456 400 800.

Safety Information

Important – Please read these instructions fully before assembly or use

General safety

- Adult assembly required! Proper assembly shall be checked by an adult before use!
- Before use, please ensure the item is on a stable and level surface.
- Do not use the item if any part is broken, torn and missing.

Warning

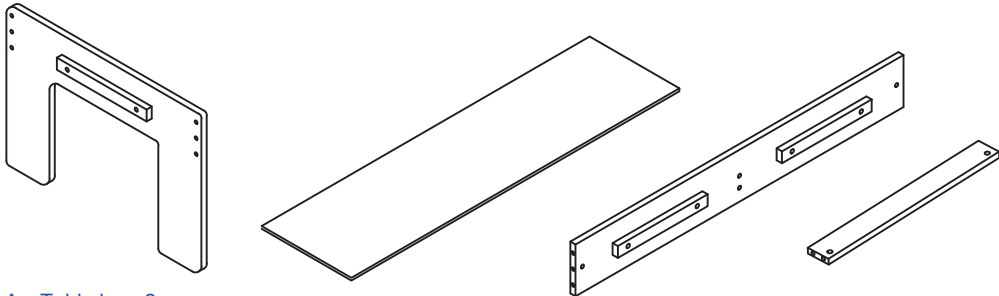
- This product contains small part which may be hazardous to your children!
- DO NOT climb or sit on the table.
- The table must always be lifted by at least two people.

Parts

If you need help or have damaged or missing parts, call the Customer Helpline: 08456 400 800.

Please check you have all the parts and fittings listed below

Table:

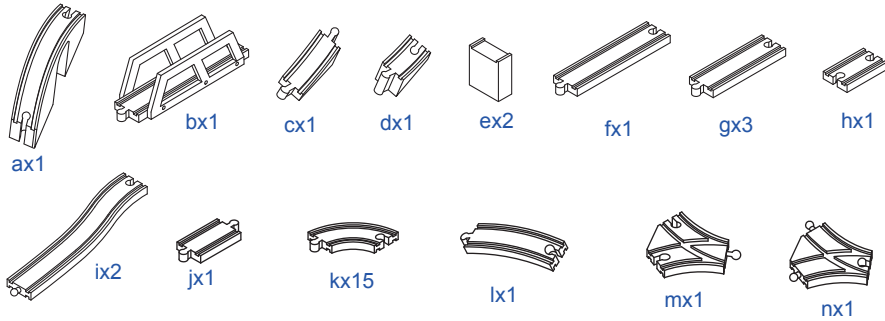


A、Table leg x2 B、Table surface x2 C、Table side panel x2 D、Table middle support slat x1



E、Locking nail x6 F、Screw x6 G、Dowel x10

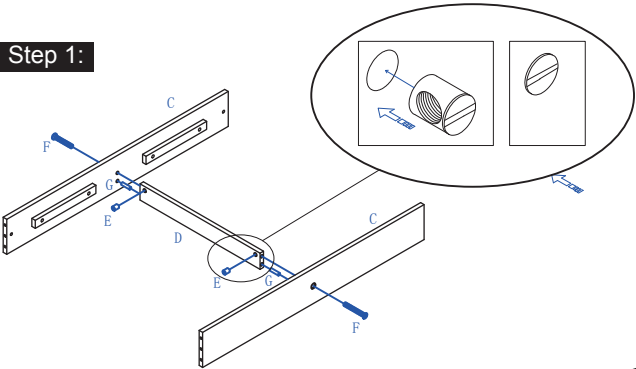
Tracks:



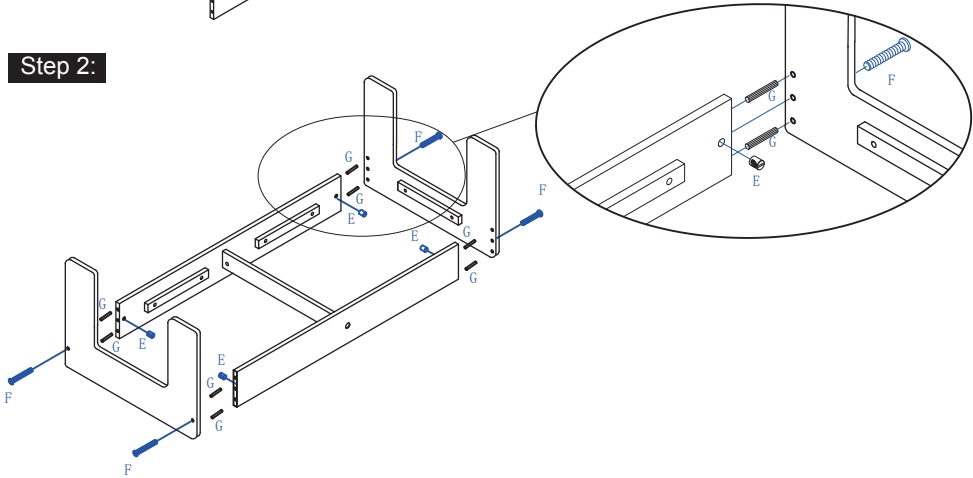
Note: The quantities below are the correct amount to complete the assembly. In some cases more fittings may be supplied than are required.

Table Assembly Instructions

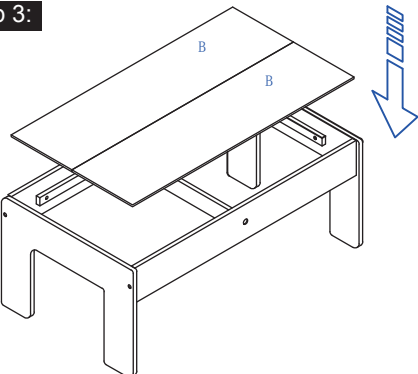
Step 1:



Step 2:

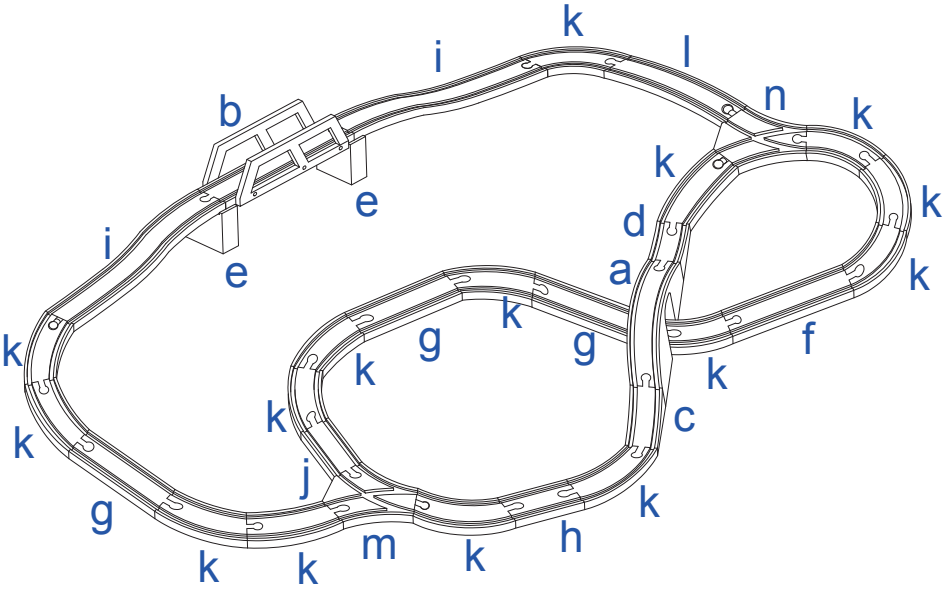


Step 3:



Notes: 2 # Phillips-head screw driver required !

Tracks Assembly Instructions



Care and Maintenance

- Periodically check all fittings to ensure that none have come loose.
- Any loose fittings must be tightened using the correct tool.
- Take care when handling or moving the item.
- Careless handling can damage wooden part.



Not suitable for children under 3 years due to small parts, choking hazard.

If you need help or have damaged or missing parts, call the Customer Helpline: 08456 400 800.
Produced for Chad Valley Toys. Country of origin: CHINA.
Address: 488-499 Avebury Boulevard, Central Milton Keynes, MK9 2NW.