

File Name	GW1134VE-AR-IB-B2
Description	GW1134VE IB For Argos
Colour	Black
Material	80g, 單色，双面印
Dimension	paper size: 148 x 210mm
Link	/Sales 2013/Argos/2014/AW14 (Cat 82)/ GW1134-P-AR - Piano with Stool/IB

Requisition	By	Date	Ver.	Description
Charmaine	Dan	25-6-2014	B2	修正Customer Helpline

CV Singalong Keyboard with Stool

Assembly & User Instructions – Please keep for future reference

349/8437
349/9780



Important

Age: 3 years +
Maximum user weight
for the stool: 50 kg.

Important – Please read these instructions fully before assembly or use

These instructions contain important information which will help you get the best from your product and ensure safe and correct assembly, use and maintenance.

If you need help or have damaged or missing parts, call the **Customer Helpline: 0345 640 0800**



Safety Information

Important – Please read these instructions fully before assembly or use

General Safety

- **WARNING** - Not for children under the age of 36 months due to small parts may present a choking hazard! Risk of strangulation due to the cable!
- SPECIFICATIONS, COLOURS AND CONTENTS MAY VARY FROM ILLUSTRATIONS.
- Young children in play are unaware of potential dangers and hazards, therefore responsible adult supervision is essential.
- **Caution:** Remove all packaging and attachments before giving this toy to a child. Please retain all information relating to this product for future reference.
- Adult assembly required.



- **Warning:** Due to insufficient strength, the stool is not for children with a body weight of more than 50kg.

Safety Battery Precaution

- Only use the batteries specified (3 x 1.5 V LR6).
- Non-rechargeable batteries are not to be recharged.
- Rechargeable batteries are to be removed from the toy before being charged.
- Rechargeable batteries are only to be charged under adult supervision.
- Different types of batteries or new and used batteries are not to be mixed.
- Only batteries of the same or equivalent types as recommended are to be used.
- Batteries are to be inserted with correct polarity.
- Exhausted batteries are to be removed from the toy.

- The supply terminals are not to be short-circuited.
- Do not dispose the battery in fire, battery may leak or explode.
- Battery should only be replaced by adult.
- Do not mix alkaline, standard (carbon-zinc), or rechargeable (nickel-cadmium) batteries.
- Remove batteries during long periods of non-use.

Battery Installation & Replacement

- Loose the screw by screw driver to open the battery compartment doors at the back of keyboard.
- Insert/ replace the new batteries in the proper direction indicated inside the battery compartment. Close and screw the battery door.
- Keyboard is powered by 3 X 1.5V "AA" (Not included).

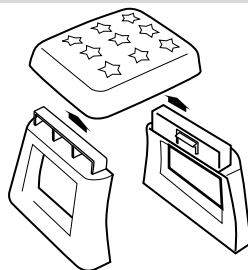
During Use

- The keyboard will automatically power-down after three minutes without input to preserve battery life. The unit can be turned on again by pressing any button.
- Please turn the unit off when the program/ activity stops working. Interrupt the power supply by removing the batteries. Let the unit rest for a few minutes with batteries, then replace the batteries. Turn the unit on. The unit should now be ready to play again.

Assembly Instructions

Step 1

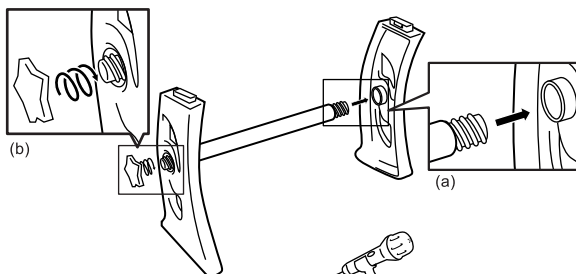
Insert the legs into the upper part of the stool.



Assembly Instructions

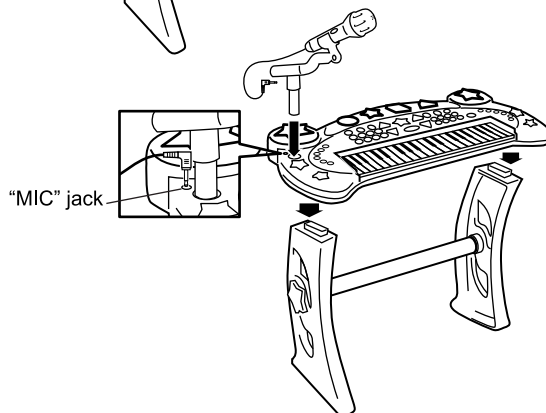
Step 2

- Set up the stand by connecting the pole.
- Install the cap at the ends of the pole.



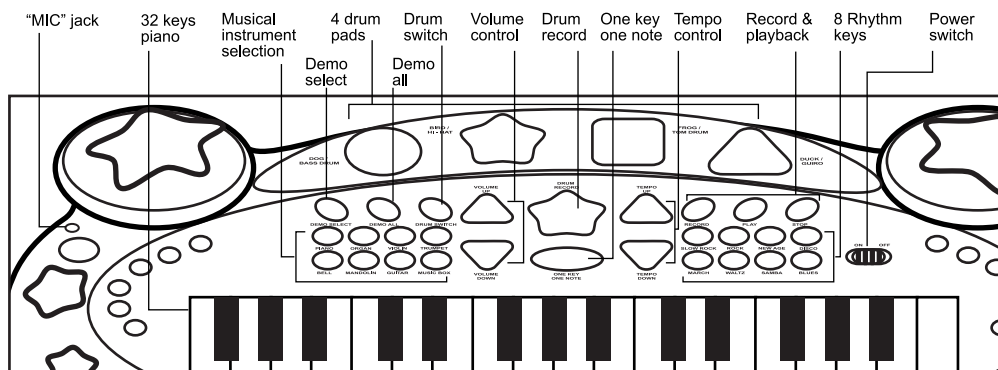
Step 3

- Attach the keyboard.
- Insert the microphone holder into the keyboard. Insert the microphone into the holder.
- Plug the microphone cord into the "MIC" jack on the keyboard.



User Instructions

Rules of using Keyboard



ON/OFF

Switching ON/OFF.

MUSICAL INSTRUMENT SELECTION

You can select one of the 8 instrument (PIANO, ORGAN, VIOLIN, TRUMPET, BELL, MANDOLIN, GUITAR, MUSIC BOX) by pressing the related buttons.

RHYTHMS SELECTION

You can select one of the 8 rhythms (SLOW ROCK, ROCK, NEW AGE, DISCO, MARCH, WALTZ, SAMBA, BLUES) by pressing the related buttons.

DRUM SWITCH

Drumbeat sounds or animal sound effects.

User Instructions

Rules of using Keyboard

TEMPO UP / TEMPO DOWN

Press "TEMPO UP" to increase or "TEMPO DOWN" to reduce the rhythm speed.

DRUM SWITCH

Selection of drumbeat sounds or animal sound effects.

PLAY

To listen to the last recording.

DEMO SELECT

This keyboard has 19 demo songs. Press "DEMO SELECT" to listen to one of the 19 demo songs.

DEMO ALL

To listen to the 19 demo songs in sequence.

DRUM RECORD

To record the drum pad sounds.

ONE KEY ONE NOTE

Press the "ONE KEY ONE NOTE" key to playback note by note.

RECORD

To record the notes played.

RECORD/ PLAYBACK Function: This function enables you to record and playback a tune played. Press Record before playing a tune. When you have finished, press Play to listen to the tune.

STOP

To stop the rhythm or the demo song.

VOLUME UP / VOLUME DOWN

Adjust volume to desired level.

Care and Maintenance

General

1. Keep the unit clean by wiping it with a slightly damp cloth.
2. Keep the unit out of direct sunlight and away from any direct heat source.
3. Do not drop the unit on hard surface and do not expose the unit into moisture or water.

Inspect Regularly For

Do not plug in the microphone while the unit is on.

To avoid "feedback" place the microphone as far from the speaker as possible.



Not suitable for children under 3 years due to small parts, choking hazard. Long cable. Strangulation hazard.

Disposal Information



The symbol on the product or its packaging indicates that this product may not be treated as household waste. Instead it should be handed over to the applicable collection point for the recycling of electrical and electronic equipment. By ensuring this product is disposed of correctly, you will help prevent potential negative

consequences for the environment and human health, which could otherwise be caused by inappropriate waste handling of this product. For more detailed information about recycling this product, please contact your local council office, your household waste disposal service or the shop where the product was purchased.

If you need help or have damaged or missing parts, call the Customer Helpline: 0345 640 0800
Produced for Chad Valley Toys. Country of origin: China
Address: 489 - 499 Avebury Boulevard, Central Milton Keynes, MK9 2NW.