



## What's in the box

---



Solar panel with cable



Mount

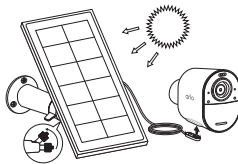
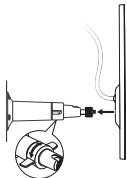
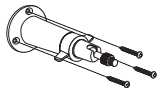


Mounting screws


## Set up your Solar Panel Charger

---

1. Install the mount near your camera.
2. Attach your solar panel to the mount.



3. Connect the solar panel power cable to your camera's magnetic charging port.




# Need help?

---

We are here for you.

Visit [www.arlo.com/support](http://www.arlo.com/support) for quick answers and:

- How-to videos
- Troubleshooting tips
- Additional support resources




© Arlo Technologies, Inc. Arlo, Arlo logo, and Every Angle Covered are trademarks of Arlo Technologies, Inc. Any other trademarks are for reference purposes.

Si ce produit est vendu au Canada, vous pouvez accéder à ce document en français canadien à [arlo.com/docs](http://arlo.com/docs).

(If this product is sold in Canada, you can access this document in Canadian French at [arlo.com/docs](http://arlo.com/docs).)

For regulatory compliance information including the EU Declaration of Conformity, visit [www.arlo.com/about/regulatory/](http://www.arlo.com/about/regulatory/).



Arlo Technologies Intl. Ltd  
Ground Floor, Building 3  
University Technology Centre  
Curraheen Road, Cork T12 EF21 Ireland

Arlo Technologies UK Limited  
100 New Bridge Street  
London, EC4V 6JA

Arlo Technologies, Inc.  
2200 Faraday Avenue, Suite 150  
Carlsbad, CA 92008 USA



September 2022



201-50415-03

