

The Original  
**smarTrike®**

[www.SmartTrike.com](http://www.SmartTrike.com)



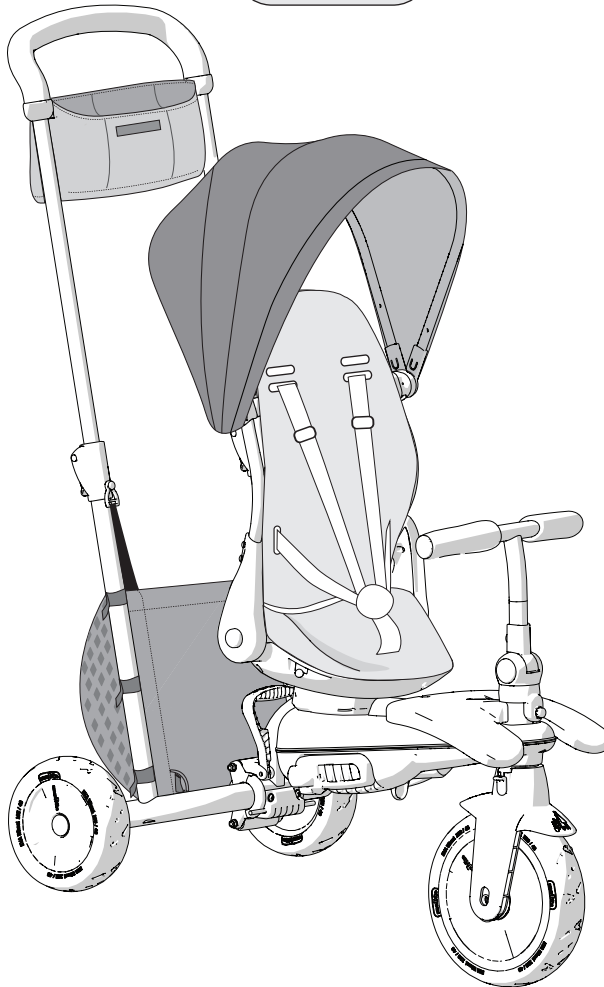
[www.youtube.com/user/SmartTrikeOfficial](http://www.youtube.com/user/SmartTrikeOfficial)

**7 in 1**  
**6m-36m**

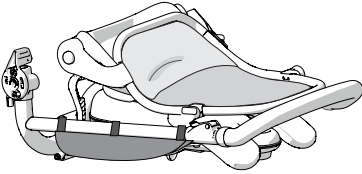
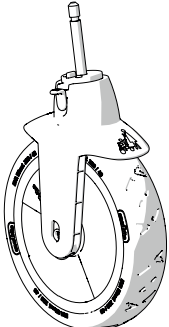
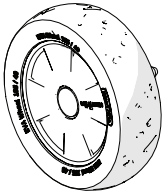
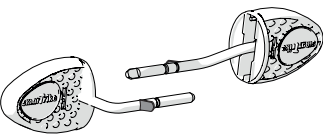
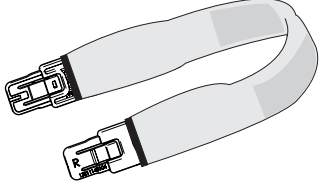
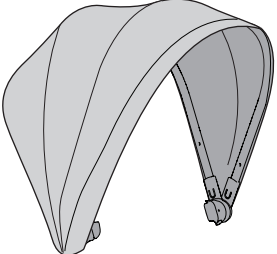
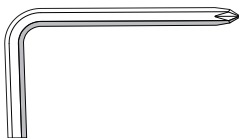
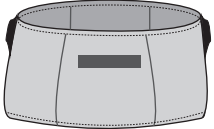
550



55002A



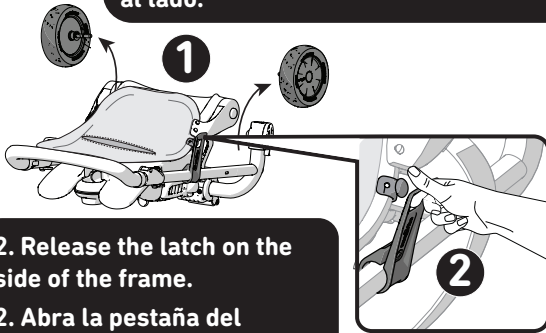
## Parts included / Piezas para el montaje

<b>1</b> L550102	L300120	L505131
 <p style="text-align: right;"><b>A</b></p>	 <p style="text-align: right;"><b>B</b></p>	 <p style="text-align: right;"><b>C</b></p>
L502120	LTR1101	LTR1904
 <p style="text-align: right;"><b>D</b></p>	 <p style="text-align: right;"><b>E</b></p>	 <p style="text-align: right;"><b>F</b></p>
<b>2</b> 12629996	<b>3</b> L550250	
 <p style="text-align: right;"><b>G</b></p>	 <p style="text-align: right;"><b>H</b></p>	

**1**

1. Take the wheels out and place them next to the trike.

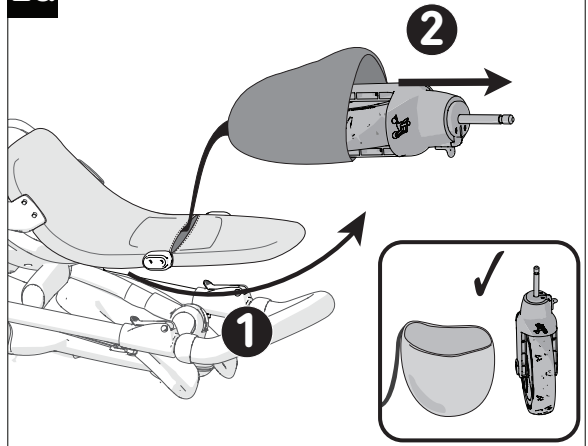
1. Saque las ruedas y colóquelas al lado.



2. Release the latch on the side of the frame.

2. Abra la pestaña del costado del marco.

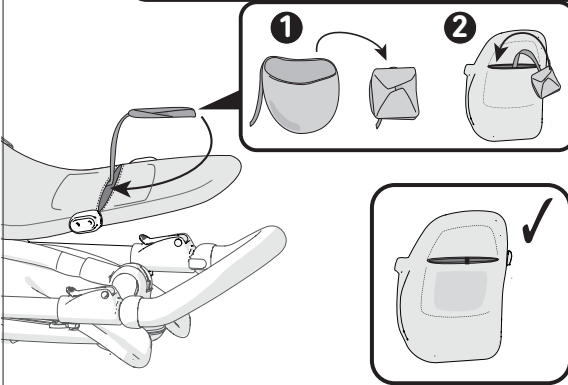
**2a**



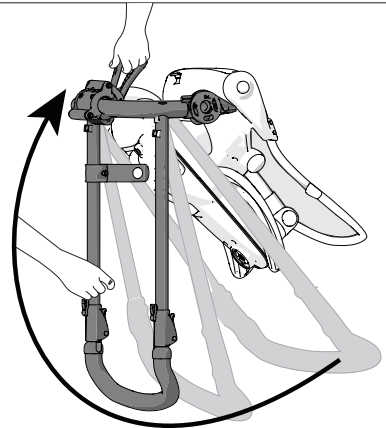
**2b**

Fold the front wheel bag into the pocket on the back of the seat.

Doble la bolsa de la rueda delantera y colóquela en el bolsillo para este fin que se encuentra en la parte trasera del asiento.

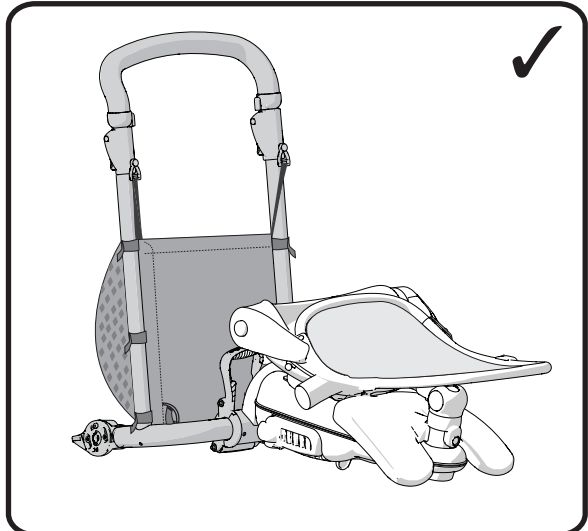
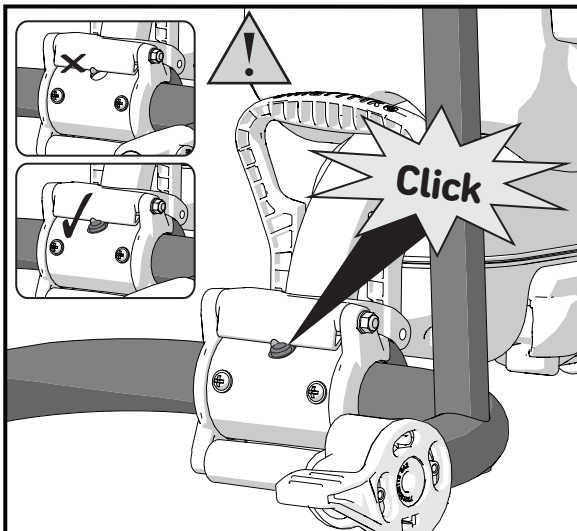


**3**

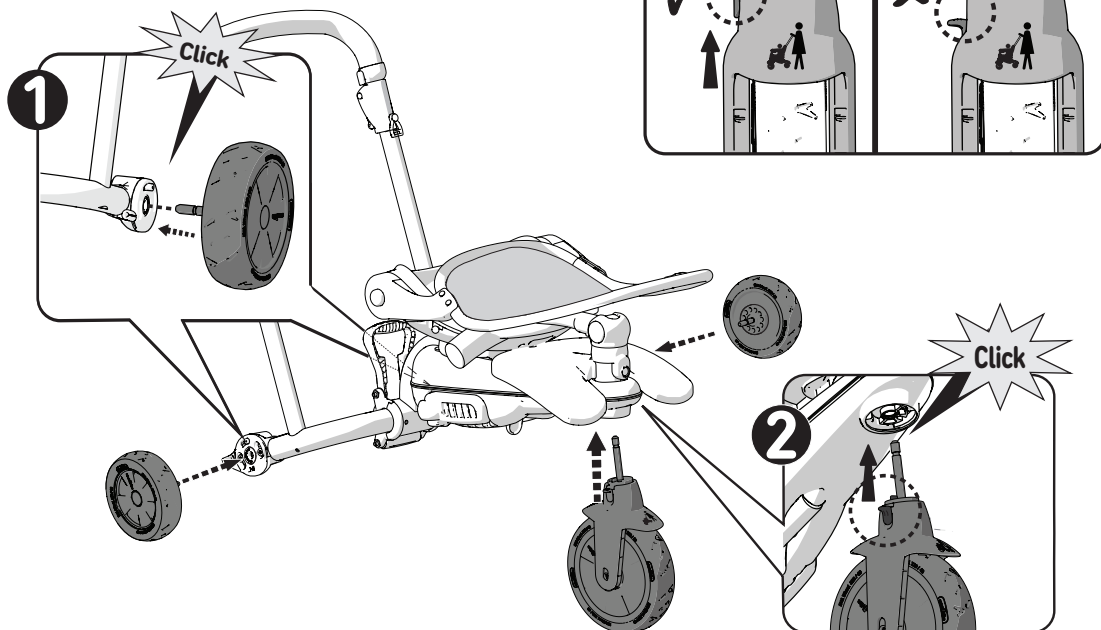


Rotate the parent handle in the direction of the arrow until it clicks into place.

Gire el manillar parental en la dirección de la flecha hasta que que escuche un clic.



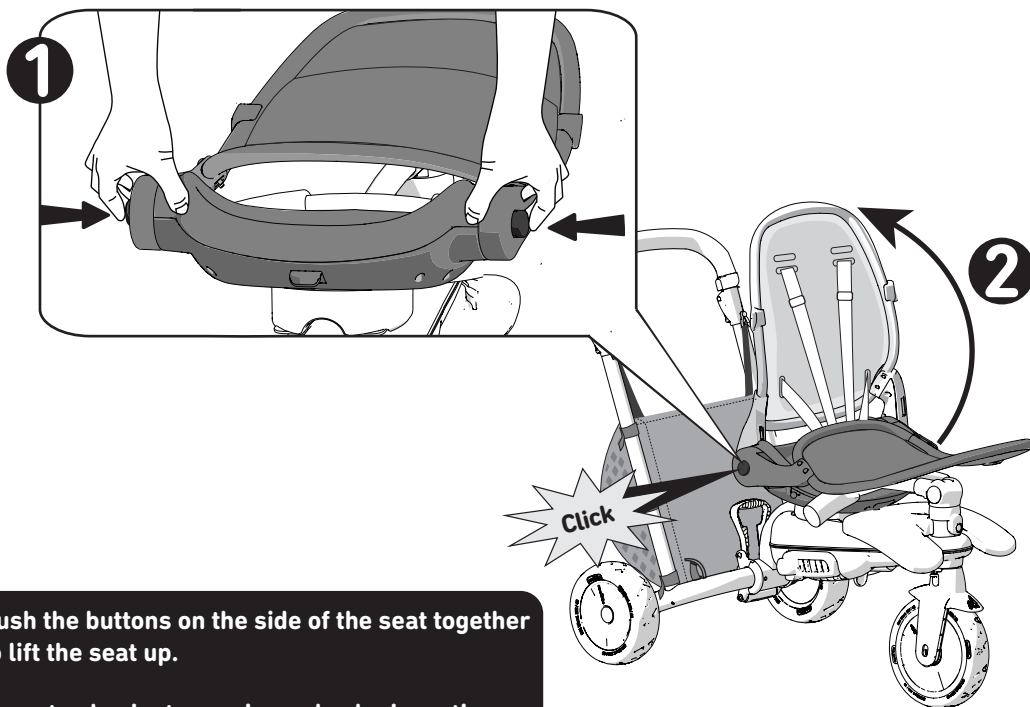
4



Click the wheels onto the frame.

Coloque las ruedas, deberá escuchar un clic.

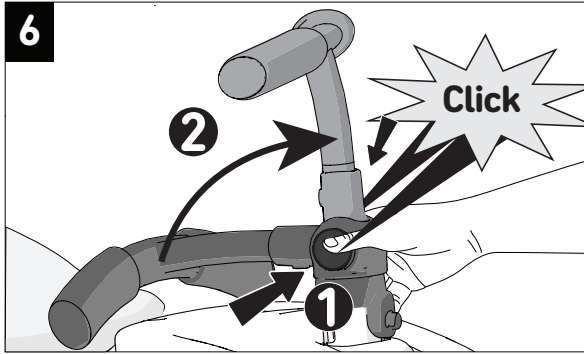
5



Push the buttons on the side of the seat together to lift the seat up.

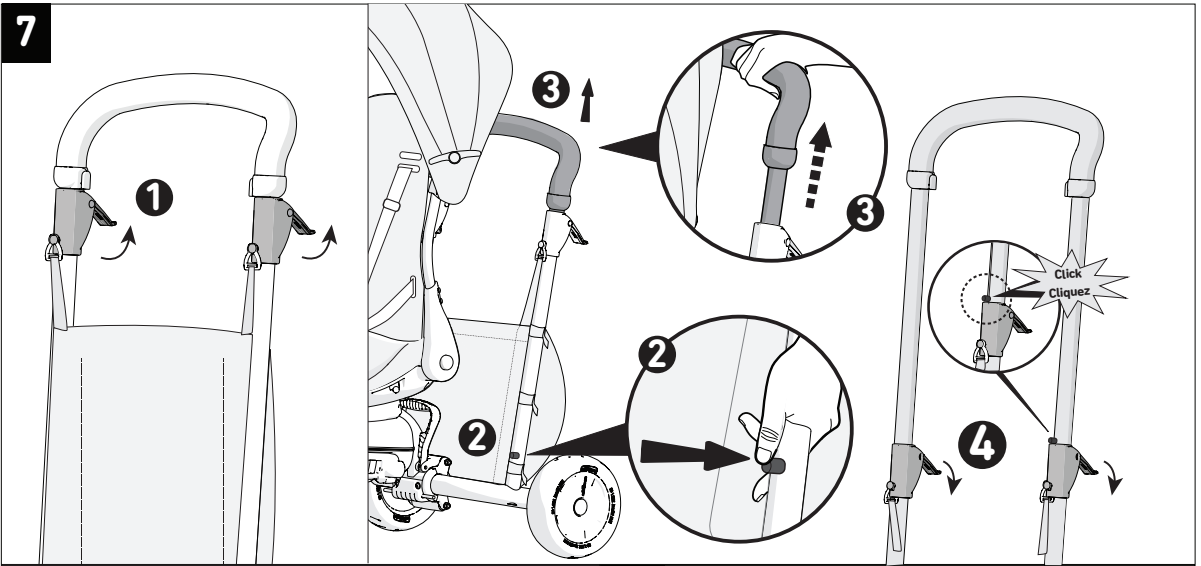
Levante el asiento presionando al mismo tiempo los dos botones situados en los laterales.



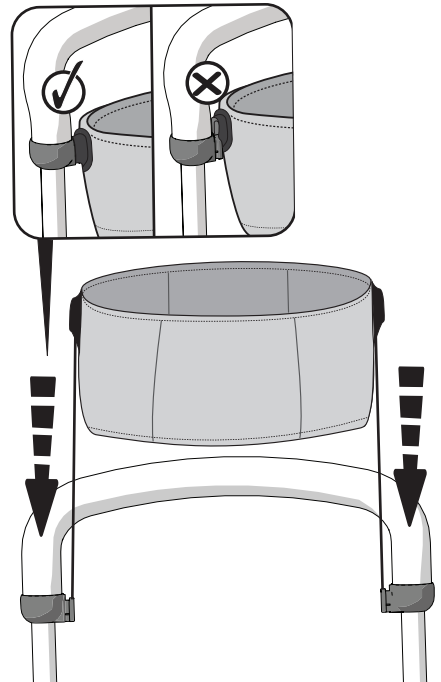
**6**

Push the buttons on the side of the handlebar together to lift the handlebar up.

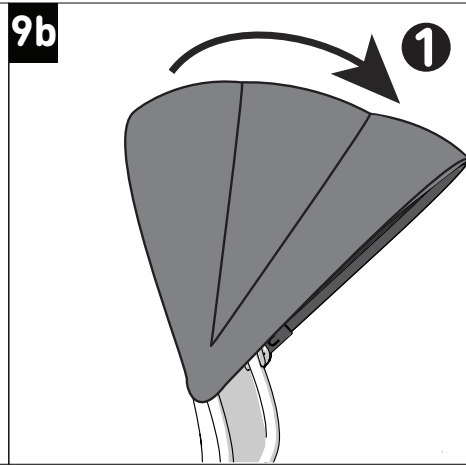
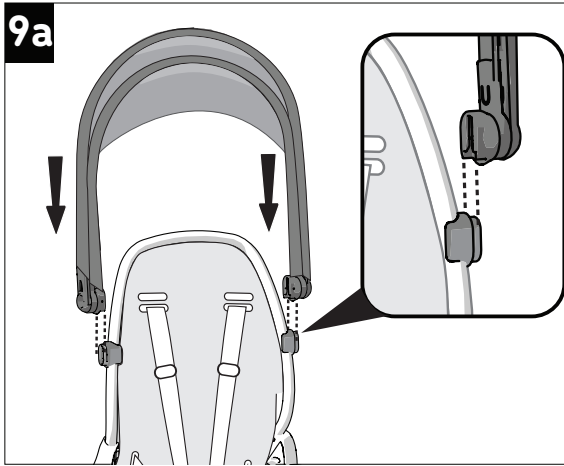
Coloque el manillar en su lugar apretando al mismo tiempo los dos botones que se encuentran en los laterales.

**7**

1. Release the red levers on either side of the parent handle.
2. Release the button.
3. pull the handle all the way up until you hear a click.
4. Lock the levers and you are ready to ride.

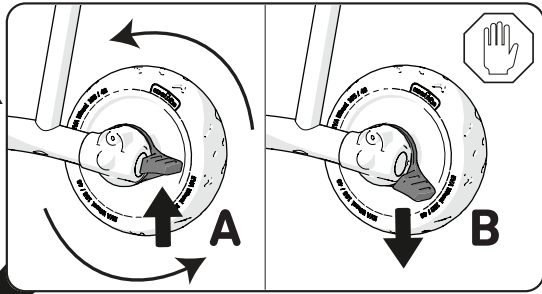
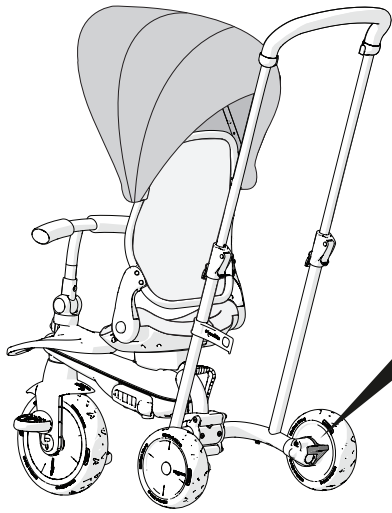
**8**

1. Suelte las palancas rojas a cada lado del manillar principal.
2. Suelte el botón.
3. Tire del asa hacia arriba hasta que escuche un click.
4. Bloquee las palancas.



**You are ready to ride / Está listo para usar**





- (A) Pull the brake upwards to ride.  
 (A) Para usarlo, empuje el freno hacia arriba.
- (B) To stop, push the brake downwards.  
 (B) Para frenar y detenerse, presione el freno hacia abajo.

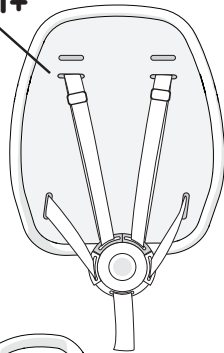
Adjust the harness / Ajuste la altura adecuada de las cintas de seguridad

**⚠ WARNING!** Use this harness at all times.

**⚠ ¡ADVERTENCIA!** Utilice siempre el arnés de seguridad.

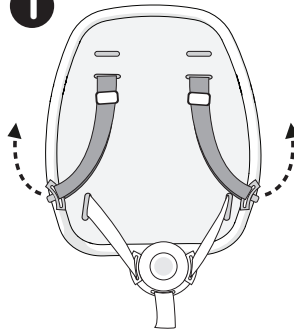
**Usage / Uso 6M+**

6M+

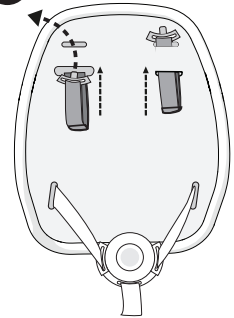


**Usage / Uso 9M+**

1



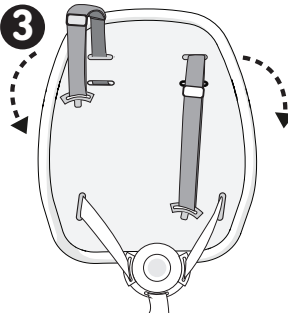
2



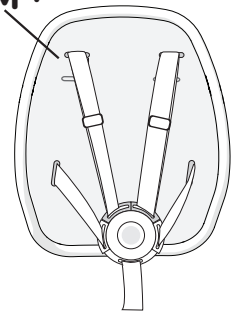
Thread the strap through the bottom slot. Then thread it through the top slot and pull.

Pase la correa a través de la ranura inferior. Después, hágalo a través de la ranura superior y tire de ella.

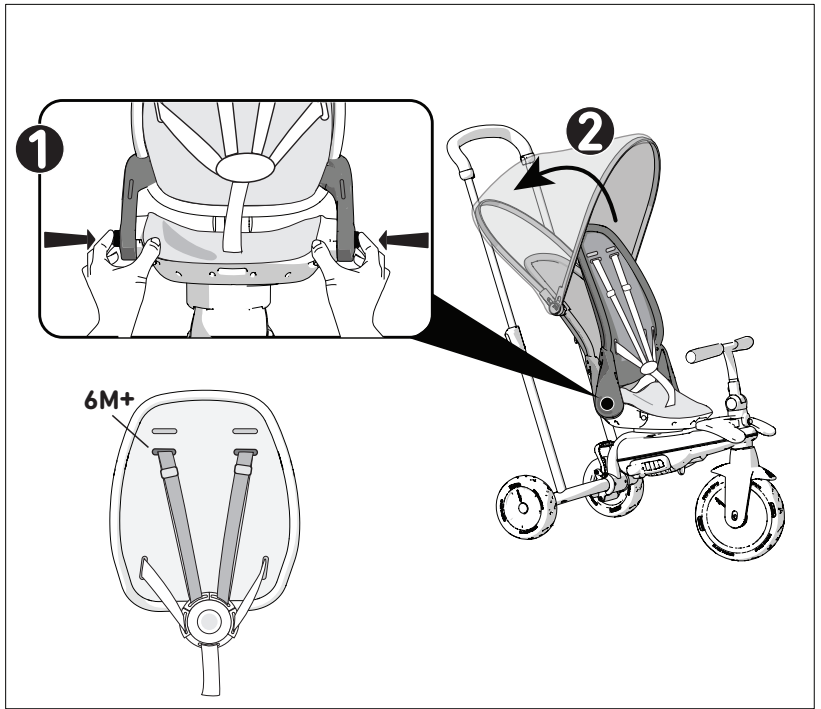
3



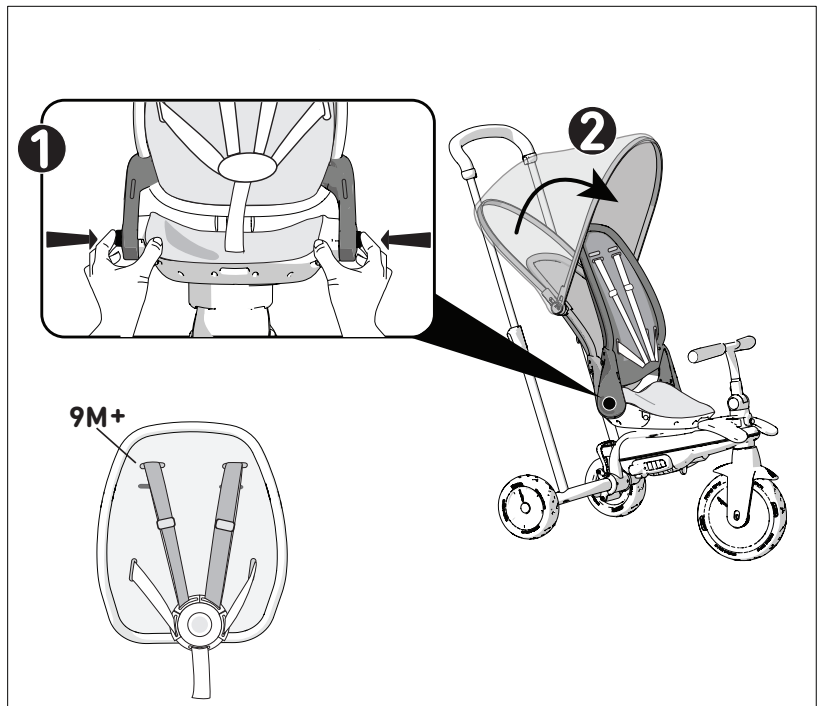
9M+



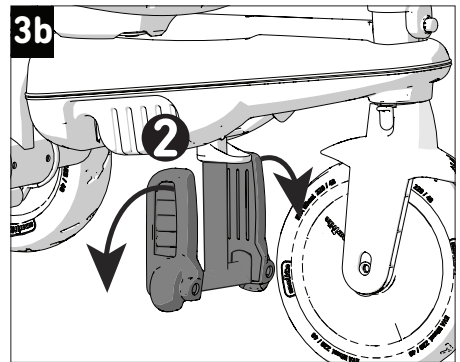
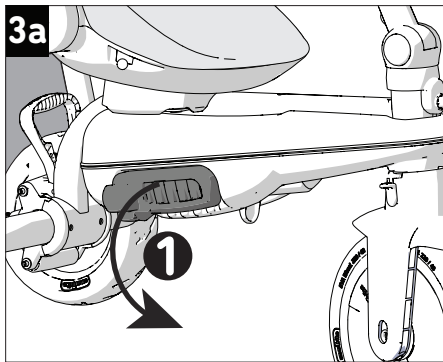
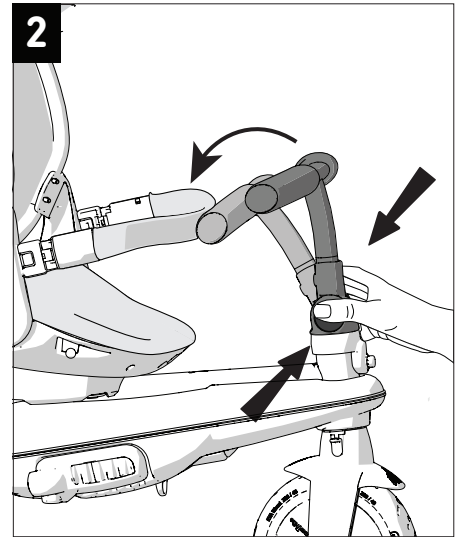
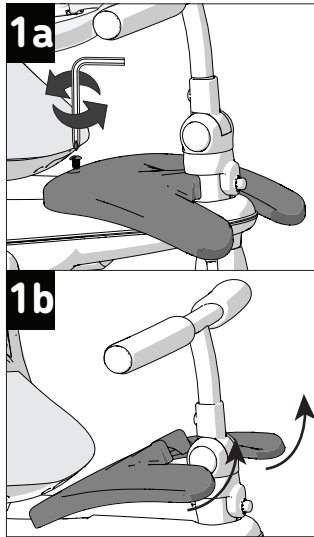
**Usage / Uso 6M+**



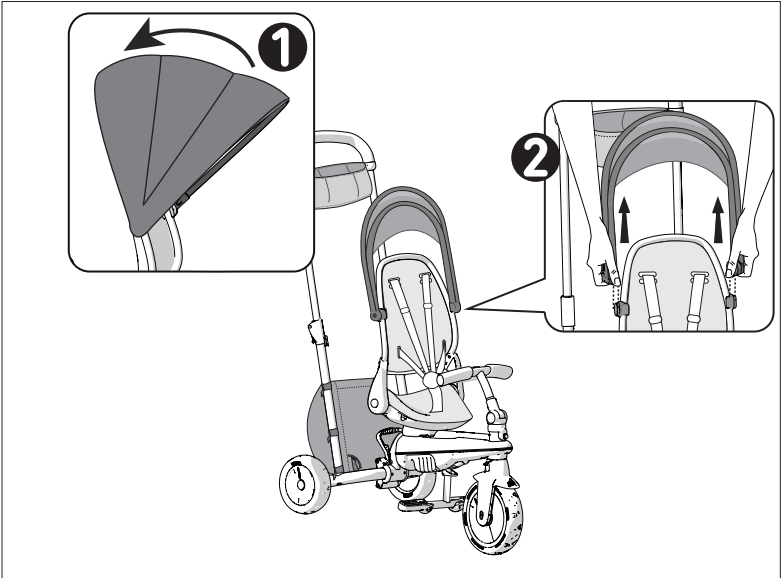
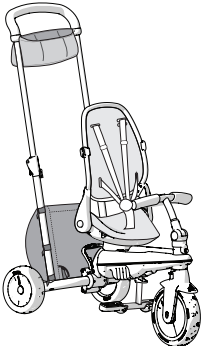
**Usage / Uso 9M+**



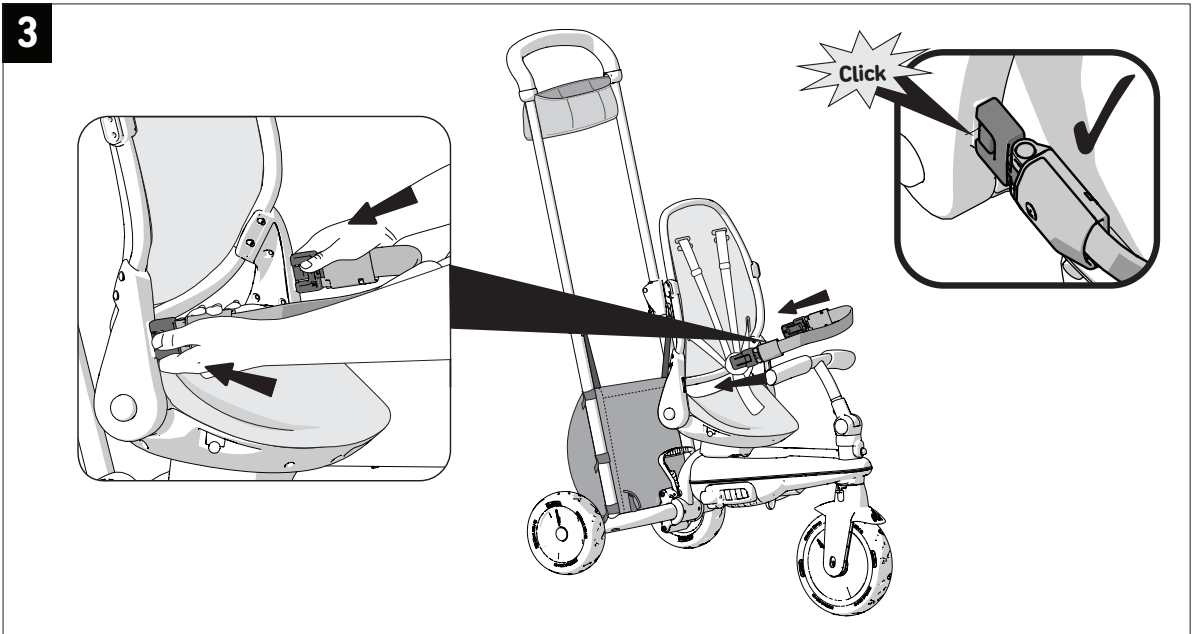
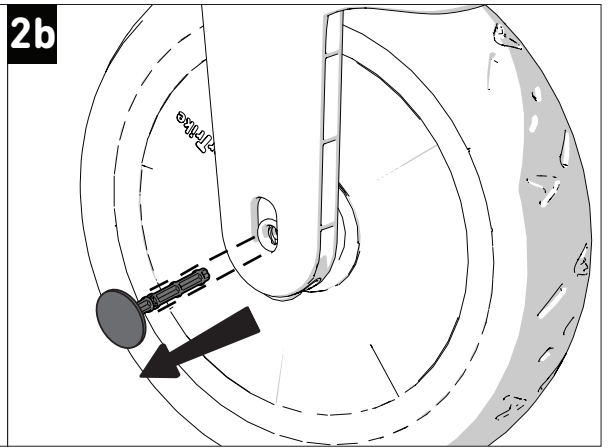
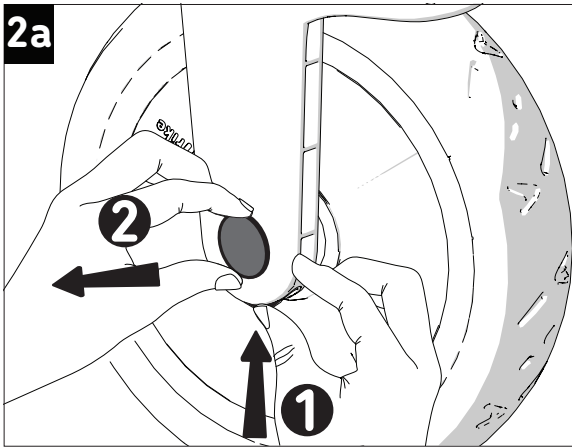
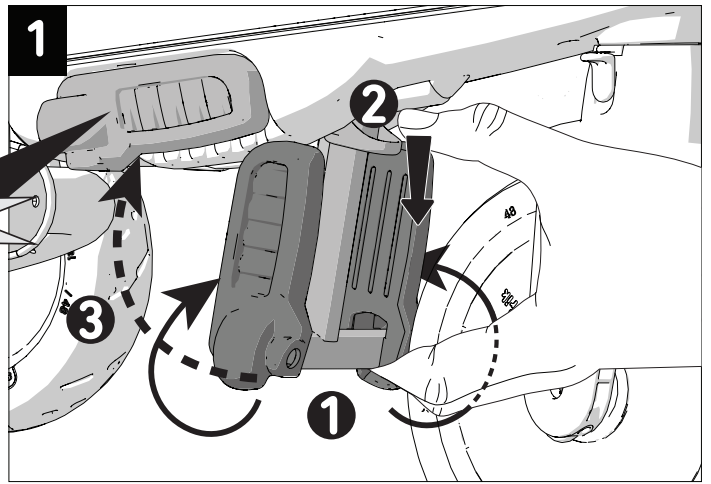
# Usage / Uso 12M+



Usage / Uso 18M+



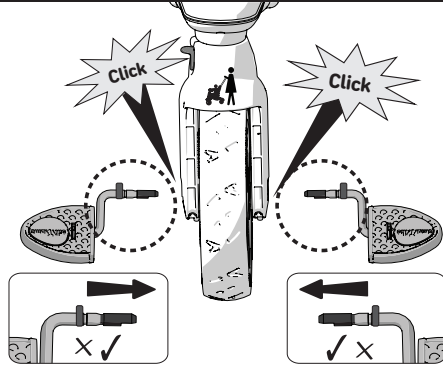
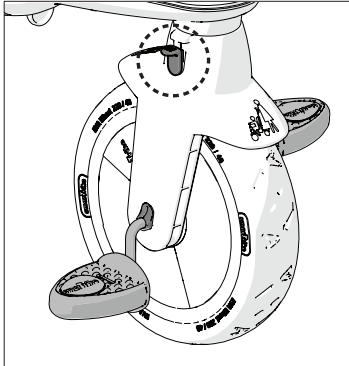
Usage / Uso 24M+



**4a**

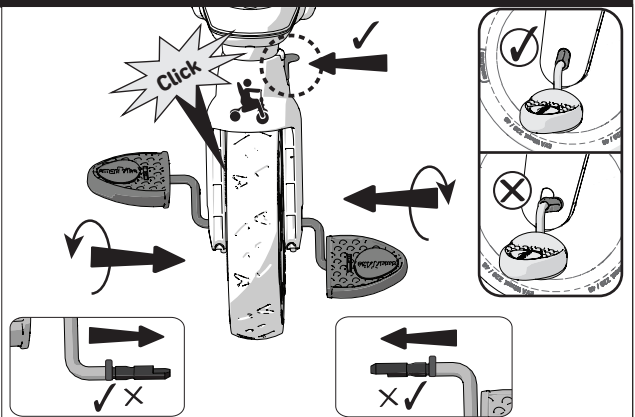
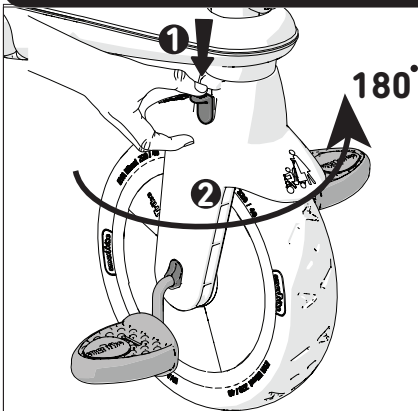
Practice pedaling: Attach the pedals with one click.

Para practicar el modo pedaleo sin pedalear, coloque los pedales en la primera posición, escuchando un solo click.

**4b**

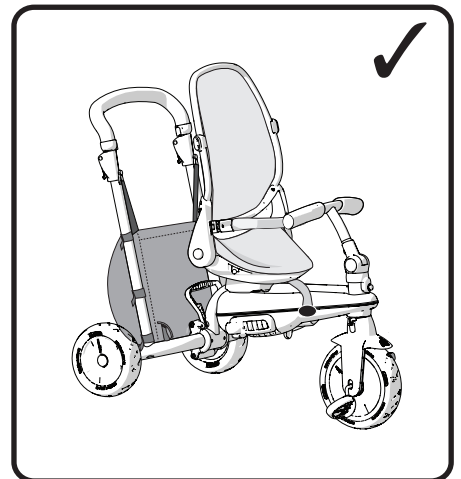
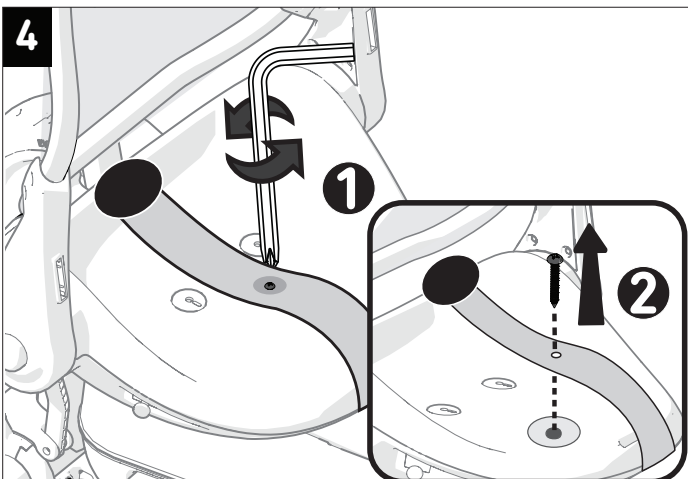
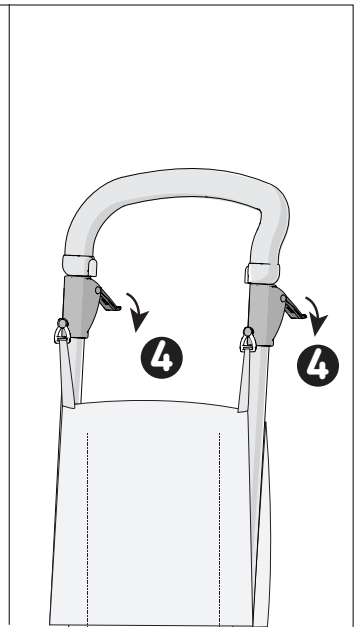
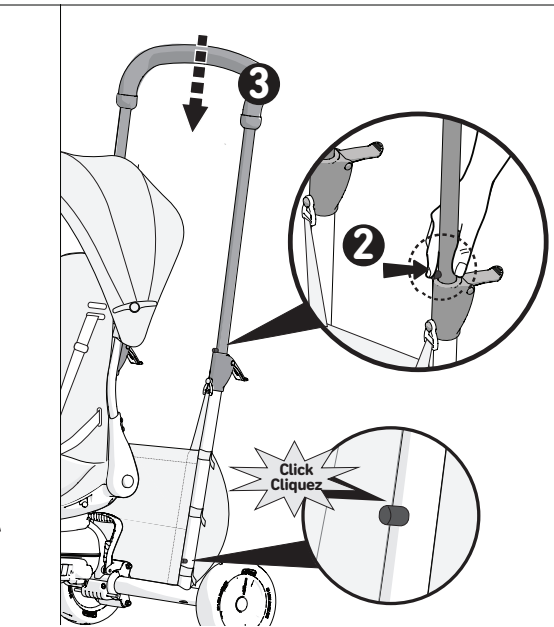
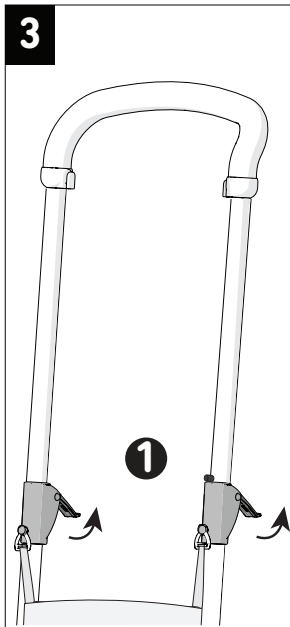
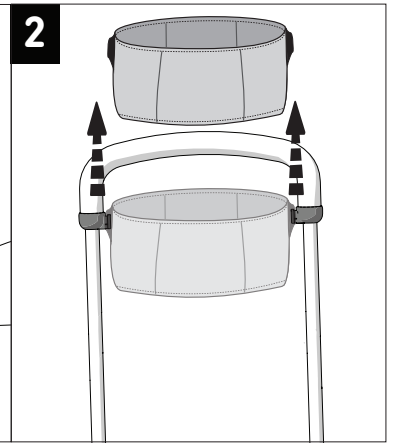
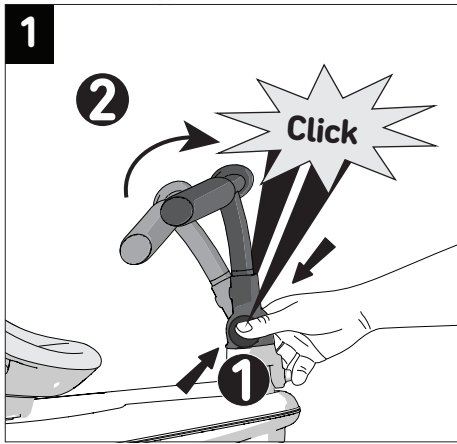
Independent pedaling: Attach the pedal and turn until you hear a second click.

Para que el niño pedalee por sí mismo: empuje el pedal hacia adentro hasta escuchar un segundo clic.





Usage / Uso 30M+





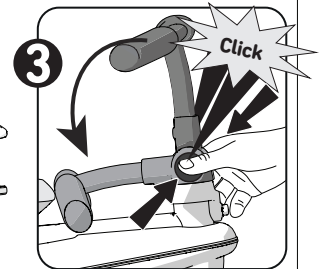
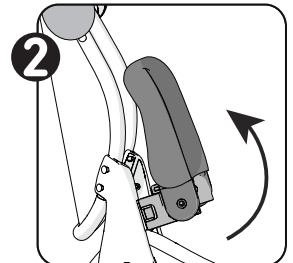
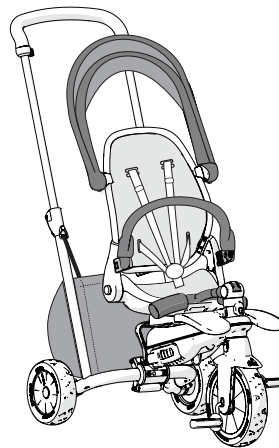
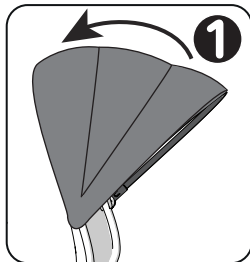
1

2. Lift up the safety bar.

2. Levante hacia arriba la barra de seguridad.

3. Fold in the child handlebar.

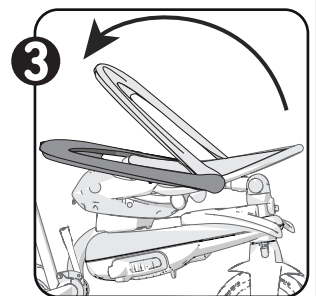
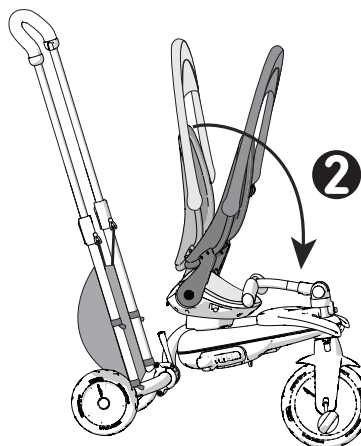
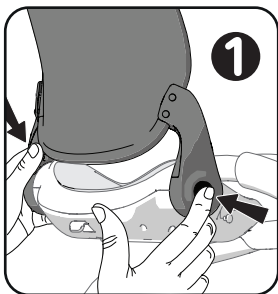
3. Pliegue el manillar del niño.

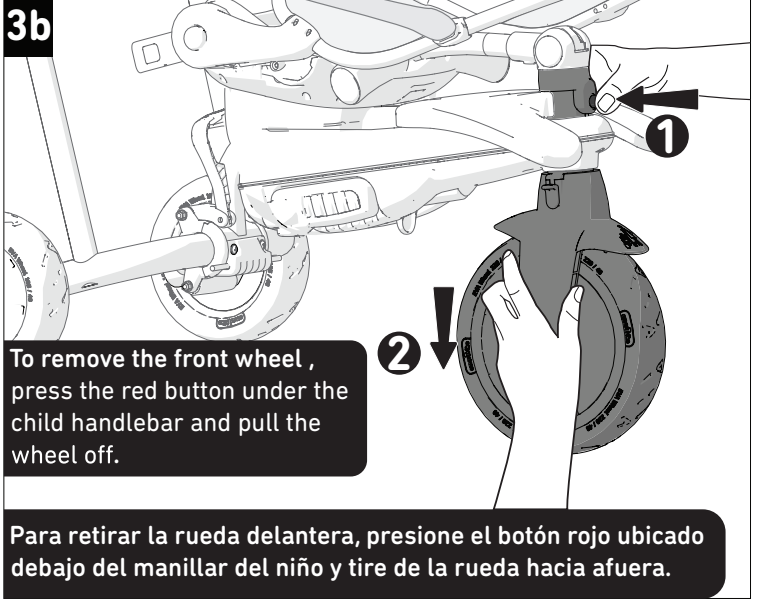
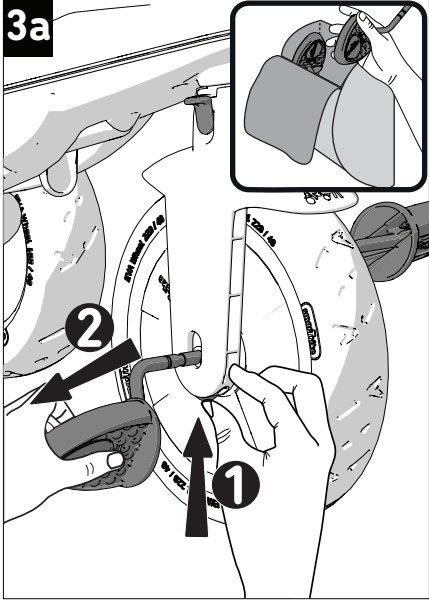


2

2. Fold down the seat.

2. Doble el respaldo del asiento hacia Adelante.

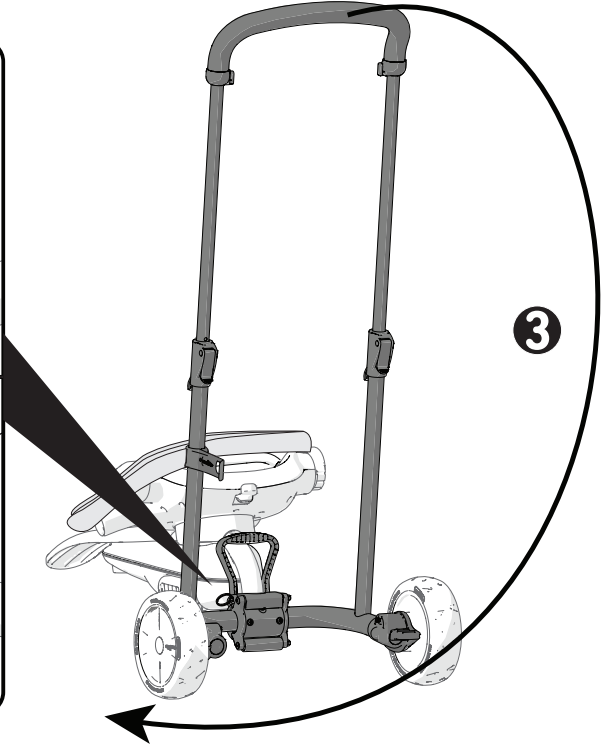
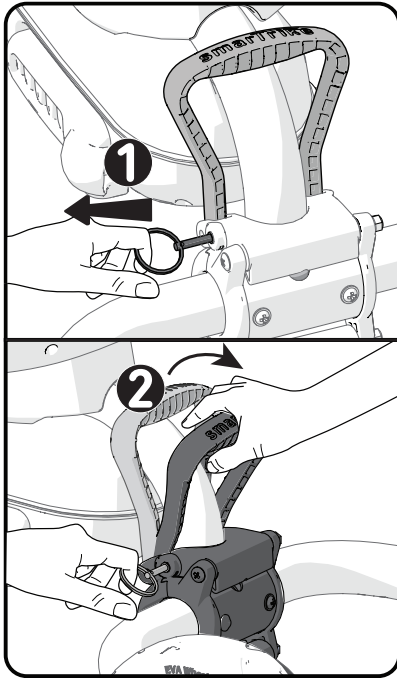




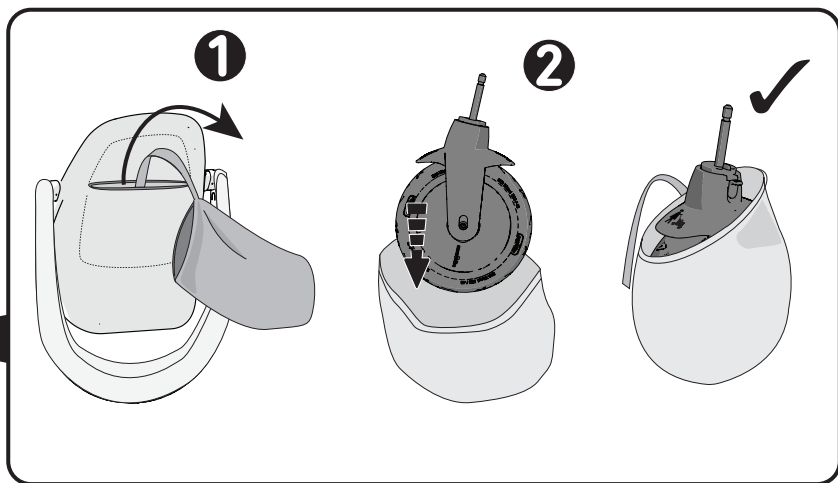
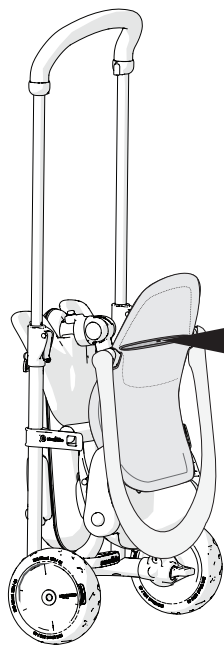
**4**

1. Pull out the pin  
1. Tire del pasador.

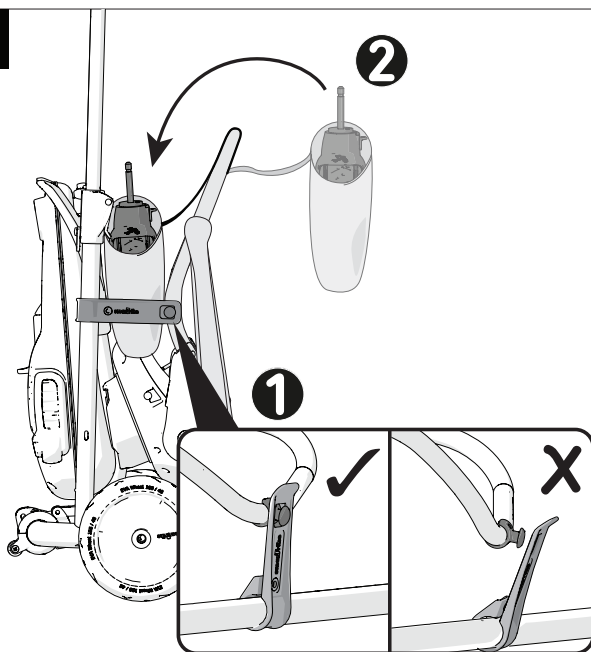
2. Pull the lever on the back Of the frame and turn the parent Handle in the direction of the Arrow.  
2. Tire de la palanca del asiento trasero y gire el manillar parental en la dirección que indica la flecha.



5



6

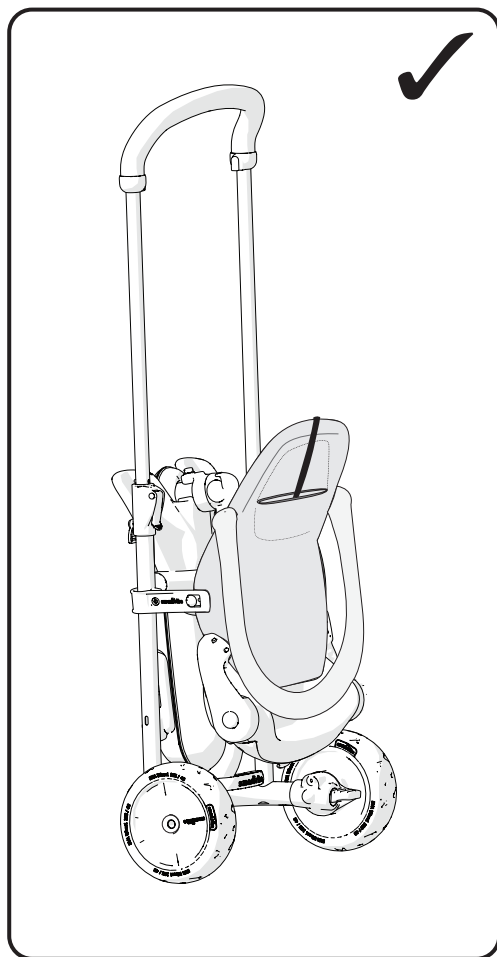


1. Use the latch to lock the folded.

1. Asegurar con el cierre.

2. Place the front wheel into its bag and place it between the seat and the frame of the trike when folded.

2. Coloque la rueda delantera en la bolsa para este fin y guárdela entre el asiento y el marco cuando el triciclo esté plegado.



## ⚠️ WARNING!

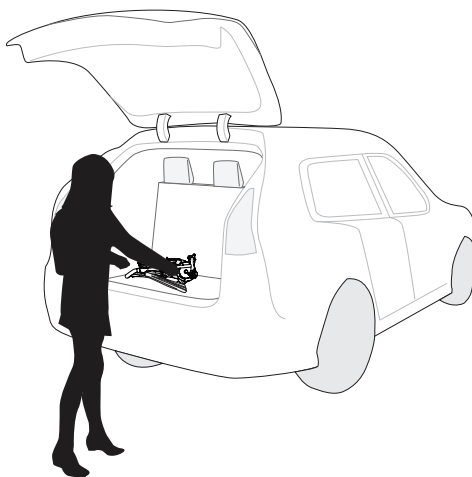
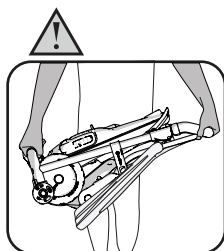
To avoid injury, ensure that your child is kept away when unfolding and folding this product.

## ⚠️ ¡ADVERTENCIA!

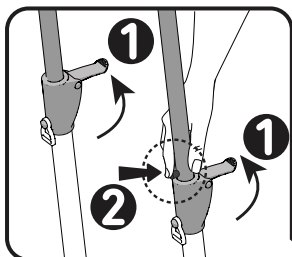
Para evitar riesgo de lesiones, asegúrese de que el niño se mantiene a cierta distancia cuando monte y pliegue este producto abajo.

For your safety carry the folded product with 2 hands.

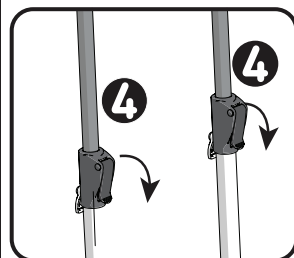
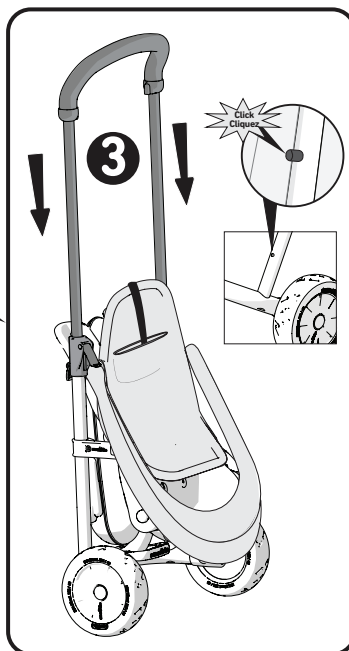
Para transportar el producto con seguridad cuando esté plegado se debe sujetar con las dos manos como se indica.



1

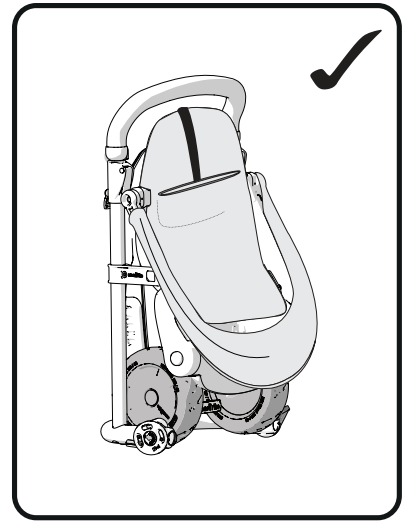
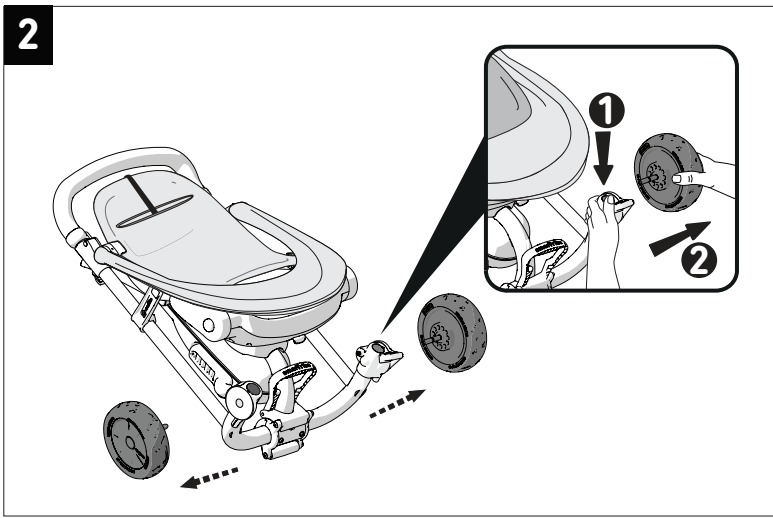


1. Open the security latches.  
1. Abra las pestañas.
2. Press the pin in to release the frame.  
2. Apresione la pieza de metal .
3. Push the parent handle down.  
3. Empuje la barra parental hacia abajo.

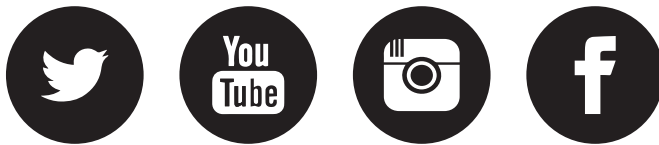


4. Close the security latches.  
4. Después cierre las pestañas para bloquearlo. bloquear.

2



[www.SmartTrike.com](http://www.SmartTrike.com)

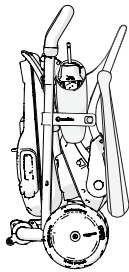


[www.youtube.com/user/SmartTrikeOfficial](http://www.youtube.com/user/SmartTrikeOfficial)

The Original  
**smarTrike**<sup>®</sup>

**7 in 1**  
**6m-36m**

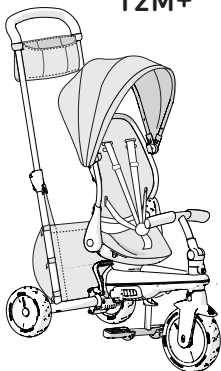
6M+



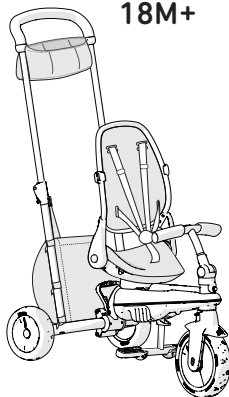
9M+



12M+



18M+



24M+



30-36M



55028189603