



Technical specification

Product title	CUGGL ISIZE KIDS CAR SEAT
Argos Cat. No.	3241385
Supplier Ref. No.	98515
Height group	100cm - 150cm
Safety compliance	Car seat complies with ECE R129
Product weight	6.15 kg
Product unfolded size	L55 x W44 x H61cm

If you encounter any problems with this product please call our customer care team on 0345 640 2020

Made in China,
Argos Limited London , EC1N 2HT
Argos (N.I.) Ltd, Forestside Shopping Centre,
Upper Galwally, Belfast, United Kingdom, BT8 6FX

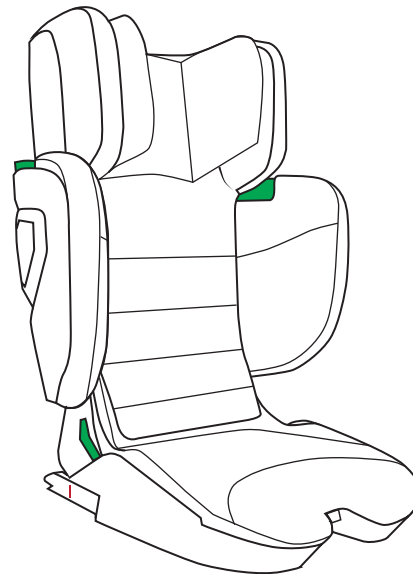
Cat No: 3241385



CUGGL ISIZE KIDS CAR SEAT

For infants of height ranges from 100cm to 150cm

care & instruction manual



IMPORTANT, RETAIN FOR FUTURE REFERENCE: READ CAREFULLY



IMPORTANT, RETAIN FOR FUTURE REFERENCE: READ CAREFULLY

This is a i-Size booster seat Enhanced Child Restraint System.
It is approved according to UN Regulation NO. 129, for use primarily in "i-Size seating positions" as indicated No. 129 for use primarily in "i-Size seating positions" as indicated by vehicle manufacturers in the vehicle user's manual.

If in doubt, consult either the Enhanced Child Restraint System manufacturer or the retailer.

⚠WARNING

- Read this instruction manual carefully.
- The correct fitting of the ISOFIX attachment is of vital importance for the safety of your child.
- For the future use of the seat, it is important that you keep the instruction manual carefully.
- Never leave your child unattended in the car.
- Do not use a child safety seat if the vehicle seat is equipped with a front airbag. This can be dangerous. This does not apply to side airbags.



IMPORTANT

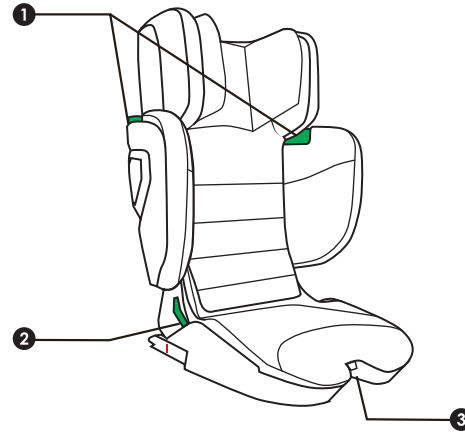
- Before use our product, please read the instruction manual carefully, the product is a safety product and is only safe when used in accordance with the instruction manual.
- The product must only be used on a forward facing seat that is fitted with the ISOFIX attachment.
- The product may be used on either the back seat. However, we recommend that it is fitted on the back seat.
- The product has been approved according to the strictest European safety standards (R129/03) and is for stature 100-150cm, ISOFIX attachment +Vehicle 3 point belt and is for 100-150cm Vehicle 3 point belt.
- After an accident the seat may become unsafe due to damage that is not be noticeable immediately. It should therefore be replaced.
- The safety of the seat can only be guaranteed by the manufacturer if it is issued by the original owner.
- We advise you strongly that not to use a second-hand product, because you are not sure if it is in good condition.
- Ensure that all luggage and objects likely to cause injury in the event of an accident are properly secured.
- Do not use this child seat in passenger seats are equipped with airbags.
- It is recommended that the car seats should not be used more than 5 years from the date of production. The properties of the products may deteriorate due to, for example, ageing of the plastic and this may not be visible.
- The baby car seat must not be used without the cover. Please use an original cover, as the cover contributes to the safety of the seat.
- The seat must be secured with a seat belt or ISOFIX attachment even when it not on use.
- An unsecured seat may injure other passengers in the care in an urgent stop.
- The rigid items and plastic parts of a child restraint must be located and installed that they are not liable, during everyday use of vehicle, to become trapped by a movable seat or in door of the vehicle.
- Ensure that the seat is not damaged by heavy luggage, adjustable seats or slamming the car door etc.



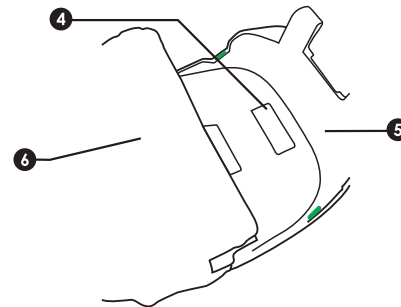
- No alterations may be made to the product as this could affect part or the overall safety of the seat.
- In hot weather the plastic and metal parts of the product will be hot. You should cover the seat when the car parked under the sun.
- In order to prevent damage to the cover, do not remove the product's logo.
- Before the purchase, please check that the seat is properly secured in your car.
- Take a short break in long journey. So that your child has some time for the relaxation.
- Set a good example yourself and always wear your seat belts.
- Tell your child that he/she should never play with the harness buckle.
- Any straps holding the restraint to the vehicle should be tight, that any straps restraining the child should be adjusted to the child's body, and that straps should not be twisted.
- Ensuring that any lap strap is worn low down, so the pelvis is firmly engaged.
- This product can not be used any more when it has been subject to violent stresses in an accident.
- Children can not be left in the product unattended.



Know your car seat



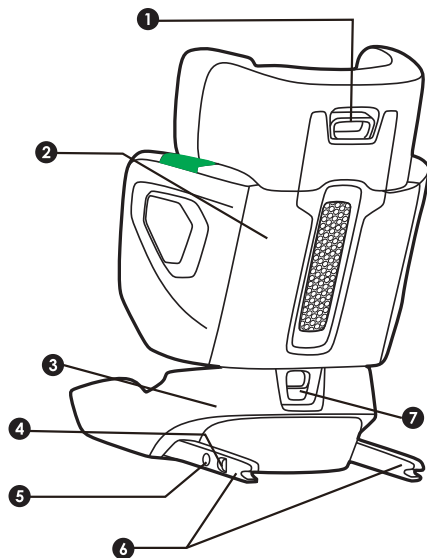
1. Shoulder guide hook
2. Waist belt guide
3. ISOFIX attachment



4. Manual slot
5. Base
6. Base cloth



Know your car seat



1. Height adjusting button
2. Chair body
3. Base
4. ISOFIX attachment release button
5. ISOFIX attachment dual lock button
6. ISOFIX attachment
7. Folding button

-6-

Cat No: 3241385



Use in the vehicle

Certification

	Child height	Installation	Approval type
Cuggl iSize Car seat	100cm to 150cm	Vehicle 3 point belt	i-Size Booster seat
		Vehicle 3 point belt + ISOFIX attachment	

*ECE = European Standard for Safety Equipment

The child safety seat has been designed, tested and certified according to the requirements of the European Standard for Child Safety Equipment (ECE R 129). The seal of approval E (in a circle) and the approval number are located on the approval label (sticker on the child safety seat).

This approval will be invalidated if you make any modifications to the child safety seat.

Only the manufacturer is permitted to make modifications to the child safety seat.

2. Use in the vehicle

On front passenger seat

Yes

Only if there's no airbag or it is turned off! There must be an ISOFIX system. (Slide the seat back and refer to vehicle instructions).

WARNING

Never use the child car seat without its fabric cover.

The fabric cover should not be replaced with any other than the ones recommended by the manufacturer. The fabric cover will affect the integral performance of the baby/child restraint system.

Never try any other force points than those indicated, the main force points of this product are the ISOFIX adapter and the Top Tether.

-7-

Cat No: 3241385



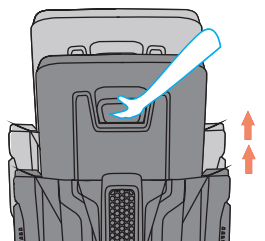
Use in the vehicle

You can use your child car seat as follows:



Using the seat

- 1 Adjusting the headrest**
Pull up the adjustment button to adjust the height of the headrest.

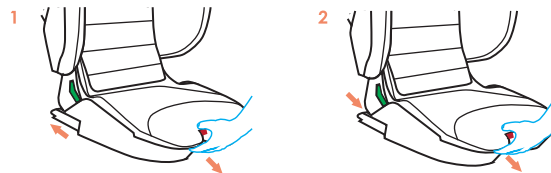


CAUTION

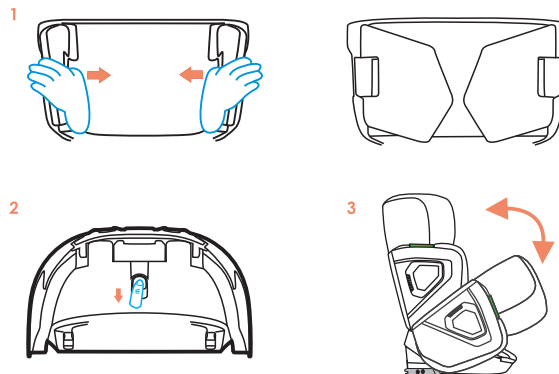
Before installing the car seat, please adjust the height of the car seat to fit your child. The height of the chair body is adjustable to 8 levels. When using, please adjust the head height to the child's shoulder height. If the child's shoulder is in the middle of two height settings, please use the higher setting.



- 2 Use the ISOFIX attachment**
Pull the ISOFIX attachment adjustment handle outwards, and ISOFIX attachment will automatically pop outward to the maximum. While pulling the ISOFIX attachment regulating handle outward, it can push the ISOFIX attachment inward and retract the ISOFIX attachment.

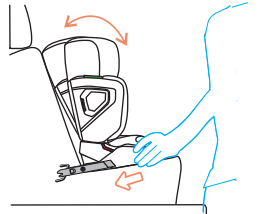


- 3 Folding the seat**
 1. Fold the headrest inwards
 2. Press the folding button
 3. Fold the seat.



4 Chair body angle adjustment

Pull the ISOFIX attachment handle outwards and push the seat inwards at the same time. For each step forward of the ISOFIX attachment the chair angle will automatically move one step outwards.

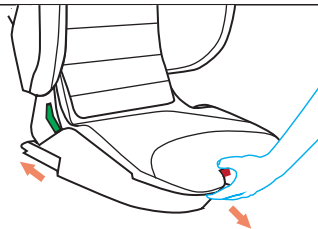


Installation in the vehicle

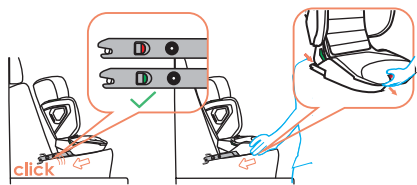
Installation instruction for Stature 100-150cm, ISOFIX attachment + Vehicle 3 point belt.

1 Chair body angle adjustment

Pull the ISOFIX attachment release button to pop out the ISOFIX attachment.

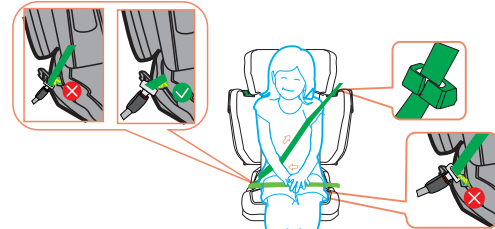


2 Push the ISOFIX attachments on the seat into the ISOFIX attachment anchor points on the car seat until you hear two "clicks" (please check the red and green indicator on the ISOFIX attachment - red to indicate incorrect installation and green to indicate correct installation). Then pull the ISOFIX attachment handle and push the seat inward.



Cat No: 3241385

6 Seat the child and position the vehicle belt in front of the child and lock the belt into the buckle of the vehicle until you hear a "click" sound. When you make sure the belt is buckled up, place the shoulder into the shoulder belt guide.



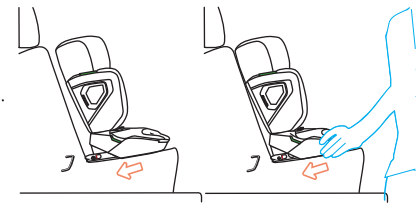
CAUTION

Make sure the lap strap is worn low down, so that the pelvis is firmly engaged. Pull on the strap until it lies flat and is close against your child's body.

Installation in the vehicle

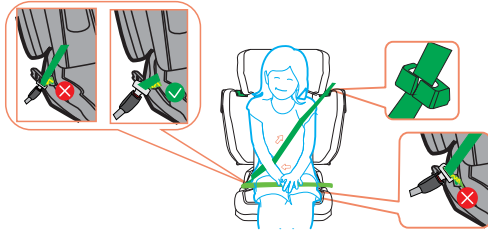
Installation instruction for Stature 100-150cm, Vehicle 3 point belt.

1 Place the child safety seat on the car seat and push the seat tightly into the car seat.



Cat No: 3241385

- 6** Seat the child and position the vehicle belt in front of the child and lock the belt into the buckle of the vehicle until you hear a "click" sound. When you make sure the belt is buckled up, place the shoulder into the shoulder belt guide.

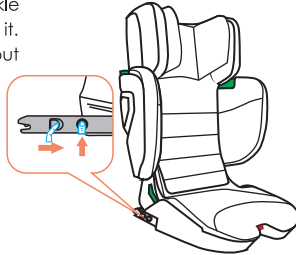


CAUTION

Make sure the lap strap is worn low down, so that the pelvis is firmly engaged. Pull on the strap until it lies flat and is close against your child's body. The straps should be correctly adjusted and ensure they are not twisted.

Removing the seat

- 1** Press the release button of the buckle of the vehicle safety belt to release it. The safety belt can now be taken out from the shoulder belt guide hook. Press the FIX two-way lock button and pull the FIX unlocking piece back to unlock it. Before removing the safety seat from the car seat, please slide the ISOFIX connectors into the safety seat. Remove the safety seat from the car seat.



Cat No: 3241385

CLEANING

Please be sure to use only original Cuggl replacement seat covers, as the seat cover is important to the proper functioning of the system. Replacement seat covers are available from Argos.

! The child seat must not be used without the seat cover.

- The cover can be removed and hand washed at 30°C with a mild detergent. Please observe the instructions on the washing label of the cover. The colours of the cover may fade if washed at more than 30°C. Never tumble dry in an electric clothes dryer (the fabric may separate from the padding).
- The plastic parts can be cleaned using soapy water. Do not use harsh cleaning agents (such as solvents).
- The harness can be removed and washed in lukewarm soapy water.

Caution! Never remove the buckle tongues from the straps.

Cat No: 3241385