



**EN** Instruction manual



**DEHUMIDIFIER**

01.368010.02.001

PARTS DESCRIPTION



## SAFETY

- Please read this user's manual carefully to ensure proper use, maintenance and installation.
- By ignoring the safety instructions the manufacturer cannot be held responsible for the damage.
- The appliance is for indoor use only.
- Do not use the unit on a socket under repairs or not installed properly.
- Do not use the unit:
  - near a source of fire.
  - in an area where oil is likely to splash.
  - in an area exposed to direct sunlight.
  - in an area where water is likely to splash.
  - near a bath, a shower or a swimming pool.
- Never insert your fingers or any other object into the air outlet. Take special care to warn children of these dangers.
- Keep the unit upward while transport and storage.
- Before cleaning or moving the unit, always turn off or disconnect the power supply.
- If the supply cord is damaged, it must be replaced by the manufacturer, its service agent or similarly qualified persons in order to avoid a hazard.
- Never move the appliance by pulling the cord and make sure the cord cannot become entangled.
- The appliance must be placed on a stable, level surface.
- This appliance is only to be used for household purposes and only for the purpose it is made for.
- The appliance shall be installed in accordance with national wiring regulations.
- Notes:
  - Contact the dealer or a designated repair shop if any parts are damaged;
  - In case of any damage, please turn off the unit, disconnect the power supply and contact the dealer or a designated repair shop.
  - In any case, the power cord shall be firmly grounded.
  - This appliance shall not be used by children aged less than 8 years. This appliance can be used by children aged from 8 years and above and persons with reduced physical,

sensory or mental capabilities or lack of experience and knowledge if they have been given supervision or instruction concerning use of the appliance in a safe way and understand the hazards involved. Children shall not play with the appliance. Keep the appliance and its cord out of reach of children aged less than 8 years. Cleaning and user maintenance shall not be made by children unless older than 8 and supervised.

**Warning**

- To protect yourself against an electric shock, do not immerse the cord, plug or appliance in the water or any other liquid.
  - The appliance shall be stored in a room without continuously operating ignition sources (for example: open flames , an operating gas appliance or an operating electric heater).
  - Do not pierce or burn.
  - Be aware that refrigerants may not contain an odor.
  - Contact authorized service technician for repair or maintenance of this unit.
  - Do not pull , deform or modify the power supply cord , or immerse it in water . Pulling or misuse of the power supply cord can result in damage to the unit and cause electrical shock.
- Compliance with national gas regulations shall be observed.
  - Keep ventilation openings clear of obstructions.
  - Any person who is involved with working on or opening a refrigerant circuit should hold a current valid certificate from an industry accredited assessment authority which authorizes their competence to handle refrigerants safely in accordance with an industry recognized assessment specification.
  - Servicing should only be performed as recommended by the equipment manufacturer. Maintenance and repair requiring the assistance of other skilled personnel should be carried out under the supervision of a person(s) competent in the use of flammable refrigerants.
  - Do not stop the unit by pulling out the power plug whilst in operation as this may cause an electric shock or fire due to heat generation unless strange sounds are heard or if strange smells or smoke appear from the unit.

- Unplug the unit if strange sounds, smell, or smoke comes from it.



#### Caution

- Please make sure the product ventilates all the time, make sure the inlet and outlet ventilation are not blocked in any way.
  - Operate this unit on a horizontal surface to avoid water leakage.
  - Do not operate this unit in an explosive or corrosive atmosphere.
  - Operate this unit in an ambient of 35 degree centigrade or less.
  - When the unit is shut off, please wait at least 3.5 minutes before restarting. This to prevent the compressor from being damaged.
- To avoid the household electricity block out, please do not use any extension cord for this unit.

#### Refrigerant


Specific information regarding appliances with R 290 refrigerant gas.


- Thoroughly read all of the warnings.
- When defrosting and cleaning the appliance, do not use any tools other than those recommended by the manufacturing company.
- The appliance must be placed in an area without any continuously sources of ignition (for example: open flames, gas or electrical appliances in operation).
- Do not puncture and do not burn.
- This appliance contains Y g (see rating label back of unit) of R290 refrigerant gas.
- R290 is a refrigerant gas that complies with the European directives on the environment. Do not puncture any part of the refrigerant circuit.
- If the appliance is installed, operated or stored in a non-ventilated area, the room must be designed to prevent to the accumulation of refrigerant leaks that could


result in a fire risk or explosion due to ignition of the refrigerant caused by electric heaters, stoves, or other sources of ignition.


- The appliance must be stored in such a way as to prevent mechanical failure.
- Individuals who operate or work on the refrigerant circuit must have the appropriate certification issued by an accredited organization that ensures competence in handling refrigerants according to a specific evaluation recognized by associations in the industry.
- Repairs must be performed based on the recommendation from the manufacturing company. Maintenance and repairs that require the assistance of other qualified personnel must be performed under the supervision of an individual specified in the use of flammable refrigerants.

(CE) N 842/2006: This unit contains the refrigerant R290. The amount of refrigerant is less than 1kg, and is in a closed cooling circuit. The coolant does have zero ozone depletion potential, but is a so-called greenhouse gases under the Kyoto Protocol and may thus contribute to global warming, if it is released to the atmosphere. Therefore only trained technicians with refrigerant certificate make a filling or emptying. Your appliance does not have be refilled with refrigerant if used properly and has an undamaged coolant circuit. GWP: R290: 3

-  **WARNING:** In order to avoid overheating, do not cover the heater.

 This product complies with conformity requirements of the applicable European Regulations or Directives.

 This product complies with conformity requirements of the applicable UK Regulations.

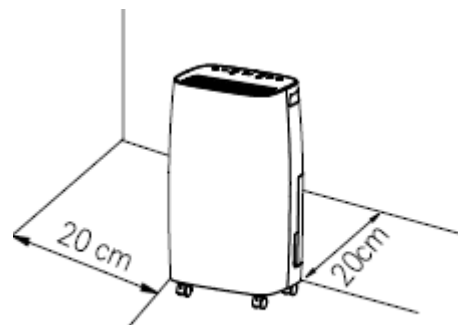
 Waste electrical products should not be disposed of with household waste. Please recycle where facilities exist. Check with your Lokal Authority or local store for recycling advise.

## PARTS DESCRIPTION

1. Control panel
2. Air outlet louvres
3. Filter covering
4. Air filter
5. Drainage tank
6. Water outlet
7. Drainage hose

## BEFORE THE FIRST USE

- Place the unit in the correct upright position before unpacking.
- Take the appliance and accessories out the box. Remove the stickers, protective foil or plastic from the device.
- Before using your appliance for the first time, wipe off all removable parts with a damp cloth. Never use abrasive products.
- Please ensure the unit is not placed against objects which will obstruct air intake e.g. furniture or curtains as this will affect its performance dramatically.
- Please don't place or operate the unit in a narrow place
- Do not place the unit in full sun as it might shut down due to overheat and the color of the unit may soon fade out.
- A distance of 20cm minimum must be kept between the unit and the wall or any other obstacles.



- Put the power cable into the socket. (Note: Make sure the voltage which is indicated on the device matches the local voltage before connecting the device. Voltage 220V-240V~50Hz).

## USING THE CONTROL PANEL



- **Power** - Press once to switch the appliance on, press again to switch the appliance to standby.
- **Power indicator** – Illuminates when the appliance is plugged in.
- **Setting** – Press the setting icon to adjust the humidity level between 40% and 80% in 5% intervals.



- **Fan Speed** - Press to switch between HIGH and LOW fan speeds.
- **Fan speed indicators** – Indicates the selected fan speed.



**Humidity, Temperature and Timer display** – When the appliance is turned on, it displays the current temperature and humidity level in the room. When the humidity level is adjusted, the selected humidity level will blink shortly on the display then current humidity level be shown. *When the humidity level in the room is lower than 35%, it will show “35”. When the humidity level in the room is higher than 95%, it will show “95”.* When setting the timer, the timer will blink shortly in the display then be shown for a few seconds before the display reverts to showing the current temperature



- **Setting** – Press the setting icon then to adjust the humidity level between 40% and 80% in 5% intervals.

*After operating for a period in an environment where the humidity level is 2 % lower than the selected humidity level, the compressor will stop then the fan will continue to run for 3 minutes before stopping. When the humidity of the environment is equal to or higher than the selected humidity by 2%, the compressor will restart after 3 minutes.*



- **Timer** – To set a time for the appliance to switch on or to standby.
- **Timer indicator** – Illuminates when the timer is activated.
- The timer can be set between 01-24 hours in 1 hour intervals.
- To set the time for the appliance to switch on, while the appliance is on standby, press and use the timer icon, the timer indicator will illuminate. The time in the display will blink for 5 seconds then stop. The time indicator will remain illuminated until the appliance turns on.
- To set the time for the appliance to switch off, while the appliance is in operation, press and use the timer icon, the timer indicator will illuminate. The time in the display will blink for 5 seconds before it reverts to showing the current room temperature. The time indicator will remain illuminated until the appliance turns off.
- To cancel the timer programming press and hold the timer icon until the timer indicator goes out .

**Note:** The programmed time remains unchanged if the machine stops operating due to a full tank or during defrosting.



- **WATER FULL indicator** – *When the drainage tank is full, the Water Full indicator will illuminate, the appliance will stop operating and beep 15 times to alert the user that the water needs to be emptied from the drainage tank > follow the steps in this manual for “Emptying the Drainage Tank”.*

## USE

- Plug the appliance in an earthed socket. The appliance will beep once, the power indicator will illuminate.
- Press the power icon to turn the appliance on, the fans will start operating and the current temperature and humidity level will be shown on the display.
- If desired you can follow the steps under – “Using the Control Panel” to set the timer, adjust the fan speed or the humidity level or use the swing feature.
- Touch the power icon again to switch the appliance on standby.
- Unplug the appliance when not in use.

### Low -Temperature Operation with Automatic Defrost

When the appliance is operating in a room with temp. between 5°C and 12°C it will automatically stop every 30 minutes to defrost.

When the appliance is operating in a room with temp. between 12°C and

20°C, it will stop every 45 minutes to defrost.

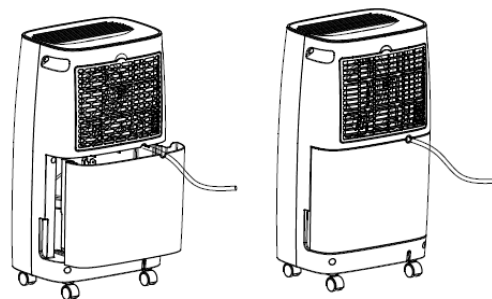
After operating for a period in an environment where the humidity level is 2 % lower than the selected humidity level, the compressor will stop then the fan will continue to run for 3 minutes before

stopping. When the humidity of the environment is equal to or higher than the selected humidity by 2%, the compressor will restart after 3 minutes.

## CONTINUOUS WATER DRAINAGE

The appliance features a continuous drainage port.

- Open the tank and attach one end of supplied hose to the water outlet inside the drainage tank and allow the collected water to drain continuously.



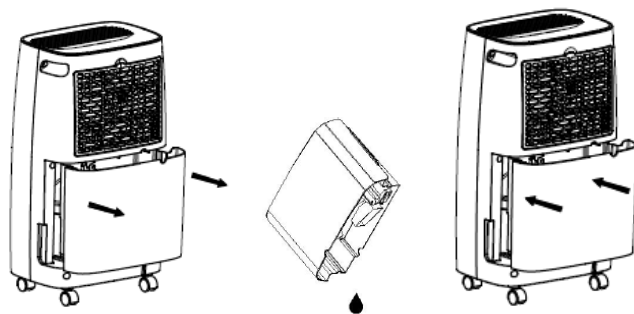
## EMPTYING THE DRAINAGE TANK

When the drainage tank is full, the Water Full indicator will illuminate, the operation will stop automatically and the buzzer will beep 15 times to alert the user, that the water needs to be emptied from the drainage tank .

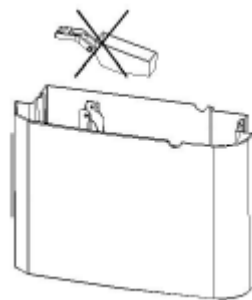
- Lightly press on the sides of the tank with both hands and gently pull out the tank.
- Remove the drainage tank and empty the water.

If the drainage tank is dirty, wash it with cold or lukewarm water. Do not use detergent, scouring pads, chemically treated dust cloths, gasoline, benzene, thinner, or other solvents, as these can scratch and damage the tank and cause water leakage.

- Place the drainage tank back into the appliance. When replacing the drainage tank, press the tank firmly into place with both hands. If the tank is not positioned properly, the "WATER FULL" sensor will be activated, and the appliance will not operate.



**Note:** Do not remove the float from the water tank. The water full sensor will no longer be able to detect the water level correctly without the float and water may leak from the water tank.

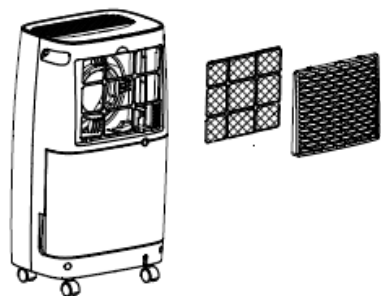


## CLEANING AND MAINTENANCE

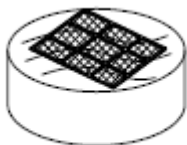
- Before cleaning, be sure to disconnect the unit from any electric supply outlet.
- First clean the surface with a neutral detergent and wet cloth, and then wipe it with a dry cloth.
- Do not use gasoline or other chemicals to clean the unit.

## CLEANING THE FILTER

- Unplug the appliance before cleaning.
- Open the filter covering and remove the filter.



- Gently vacuum clean the filter to remove any dirt. If the filter is exceptionally dirty, wash it with warm water and a mild cleanser and dry thoroughly.



- Fit the filter back onto the filter cover and attach it back onto the appliance.

## TROUBLESHOOTING

Problem	Possible causes	Suggested solution
The appliance does not work.	Is the power line properly connected?	Connect the plug into the socket.
	The Water Full indicator light is on (water tank full or not in the right place).	Drain the water in the tank
	The room temperature is above 35 degrees or under 7 degrees.	The protection device is active and the appliance cannot be started.
The dehumidification function cannot start.	Is the filter blocked?	Clean the filter according to the cleaning instructions.
	Is the air inlet or outlet blocked?	Remove the obstruction from the air inlet or outlet.
The appliance makes noise.	Is the machine tilted?	Move the machine to a flat, horizontal surface.
	Is the filter blocked?	Clean the air filter according to the cleaning instructions.
No air is discharged	Is the filter blocked?	Clean the air filter according to the cleaning instructions.

EN

## STORAGE

- Empty the water in the tank.
- Roll up the power cord.
- Clean the filter.
- Store the unit in a cool and dry place.

## DECLARATION OF CONFORMITY

- Hereby, Smartwares Europe declares that the radio equipment type 246010 is in compliance with Directive 2014/53/EU.
- The full text of the EU declaration of conformity is available at the following internet address: [www.princesshome.eu/doc](http://www.princesshome.eu/doc)

## THE PRODUCT OR EQUIPMENT CONTAINS FLUORINATED GREENHOUSE GAS.

Art. nr. 01.368010.02.001

*Coolant: R290*

*Quantity in kg: 45g*

*Global Warming Potential: 3*

*CO2 Equivalent in tonnes: 0.000135*

## ENVIRONMENT



■ This appliance should not be put into the domestic garbage at the end of its durability, but must be offered at a central point for the recycling of electric and electronic domestic appliances. This symbol on the appliance, instruction manual and packaging puts your attention to this important issue. The materials used in this appliance can be recycled. By

recycling of used domestic appliances you contribute an important push to the protection of our environment. Ask your local authorities for information regarding the point of recollection.

### Support

You can find all available information and spare parts at [www.princesshome.co.uk](http://www.princesshome.co.uk).





**smartwares<sup>®</sup> Europe**  
Swaardvenstraat 65 | 5048 AV | Tilburg  
The Netherlands | [www.princesshome.eu](http://www.princesshome.eu)



**smartwares<sup>®</sup> Safety and Lighting Ltd.**  
Meriden House | 6 Great Cornbow  
Halesowen | West Midlands | B63 3AB |  
United Kingdom | [www.princesshome.co.uk](http://www.princesshome.co.uk)