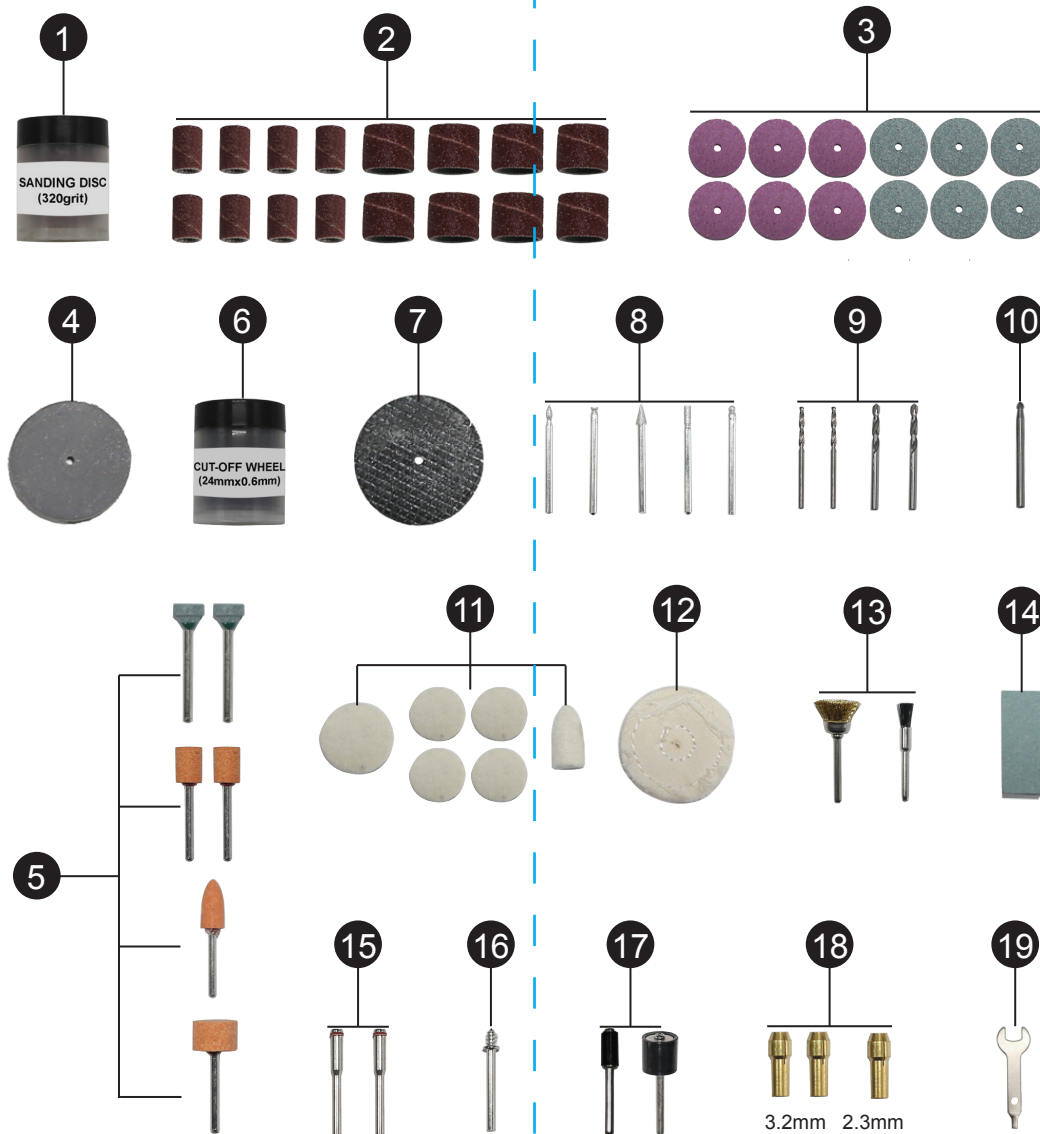




- 1. Sanding disc (320grit) 40PC
- 2. Sanding drum sleeve 16PC
(8x12.7mm, 8x6.35mm)
- 3. Grinding disc (20mmx3mm) 12PC
- 4. Rubber emery wheel 1PC
(22mmx3.6mm)
- 5. Grinding wheels with shank 6PC
(shank dia.: 3.2mm)
- 6. Cut-off wheel (24mmx0.6mm) 36PC
- 7. Fiberglass cutting disc 5PC
(32mmx1.2mm)
- 8. Diamond bits (shank dia.: 3.2mm) 5PC
- 9. HSS drill bits (φ2.3mm, φ3.2mm) 4PC
- 10. HSS cutter (shank dia.: 3.2mm) 1PC
- 11. Felt wheels 6PC
- 12. Cloth wheel 1PC
- 13. Brush (shank dia.: 3.2mm) 2PC
- 14. Whetstone 1PC
- 15. Mandrel (assemble with sanding disc, cut-off wheel, grinding disc, fiberglass cutting disc) 2PC
- 16. Mandrel (assemble with felt wheel) 1PC
- 17. Sanding drum (assemble with sanding drum sleeve) 2PC
- 18. Collets (2x3.2mm, 1x2.3mm) 3PC
- 19. Wrench (see operation) 1PC

SS20GACC

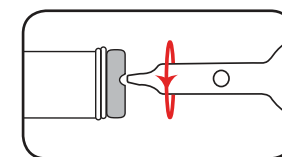


To reduce the risk of injury, user must read instruction manual.
To reduce the risk of injury, always use dust masks, always use safety glasses.

OPERATION

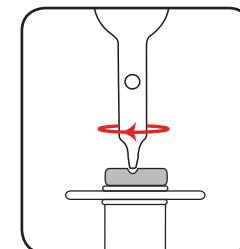
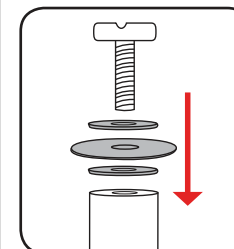
Locating a cutting/sanding disc

1 Remove the screw from the end of the disc holder.



2 Fit the fibre flange either side of the cutting disc, then insert the screw.

3 Tighten the cutting disc onto the cutting disc holder.

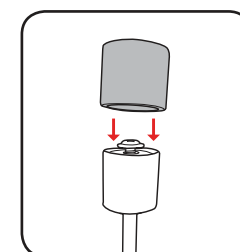
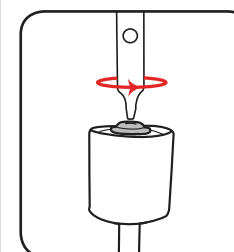


Note: Do not over-tighten the screw as it could result in damage to the cutting disc.

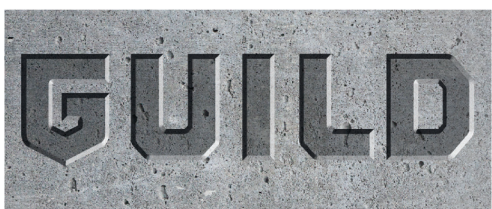
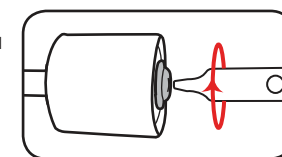
Locating a sanding drum

1 Loosen the screw on the top of the sanding drum holder.

2 Slide the sanding drum onto the sanding drum holder.



3 Tighten the screw until the sanding drum sleeve is secured.



- Sanding
- Cutting
- Grinding / Sharpening
- Carving / Engraving
- Drilling
- Cleaning / Polishing
- Collets / Miscellaneous

Produced in China for Argos Ltd,
489-499 Avebury Boulevard,
Milton Keynes, MK9 2NW.
www.argos.co.uk/guild



SS20GACC

ADJUSTABLE STORAGE COMPARTMENTS

Note: Each number settings listed in the speed charts = 000RPM'S

Functions	Images	Accessory Description	Cork	Hardwood	Plastic	Steel	Aluminum, brass, etc.	Shell, stone	Ceramic	Glass
Sanding		Sanding disc	10-20	10-21	10-22	--	10-22	--	--	--
		Sanding drum sleeve	10-25	10-26	10-27	10-28	10-29	10-30	10-31	--
Cutting		Fiberglass cutting disc	--	--	--	25-35	25-35	--	--	--
		Cut off wheels	--	--	--	25-35	25-35	--	--	--
Grinding/ Sharpening		Grinding disc	--	--	25-32	25-32	25-32	25-32	25-32	--
		Silicon carbide grinding wheels with shank	--	--	25-32	25-32	25-32	25-32	25-32	--
		Aluminum oxide grinding wheels with shank	--	--	25-32	25-32	25-32	25-32	25-32	--
Carving/ Engraving		Rubber emery wheel	--	--	--	15-25	15-25	--	--	15-25
		Diamond bit	15-32	15-32	15-32	15-32	15-32	15-32	15-32	15-32
		HSS cutter	15-32	15-32	15-32	--	--	--	--	--
Drilling		HSS drill bit	25-32	25-32	25-32	--	--	--	--	--
Cleaning/ Polishing		Brushes	10-20	10-20	10-20	10-20	10-20	10-20	10-20	10-20
		Felt wheels/cloth wheel	15-25	15-26	15-27	15-28	15-29	15-30	15-31	15-32
Collets/ Miscellaneous		Collets	Suitable for shank size 2.3mm, 3.2mm							
		Wrench	Fixing the attachments and collets							
		Whetstone	Adjust the concentricity of grinding wheels to keep them in good condition							
		Mandrel	To assemble with rubber emery wheel/sanding disc/cut-off wheels/grinding disc/fiberglass cutting disc							
		Mandrel	To assemble with felt wheel/cloth wheel							
		Sanding drum	Mandrel for hitching sanding drum sleeves							