

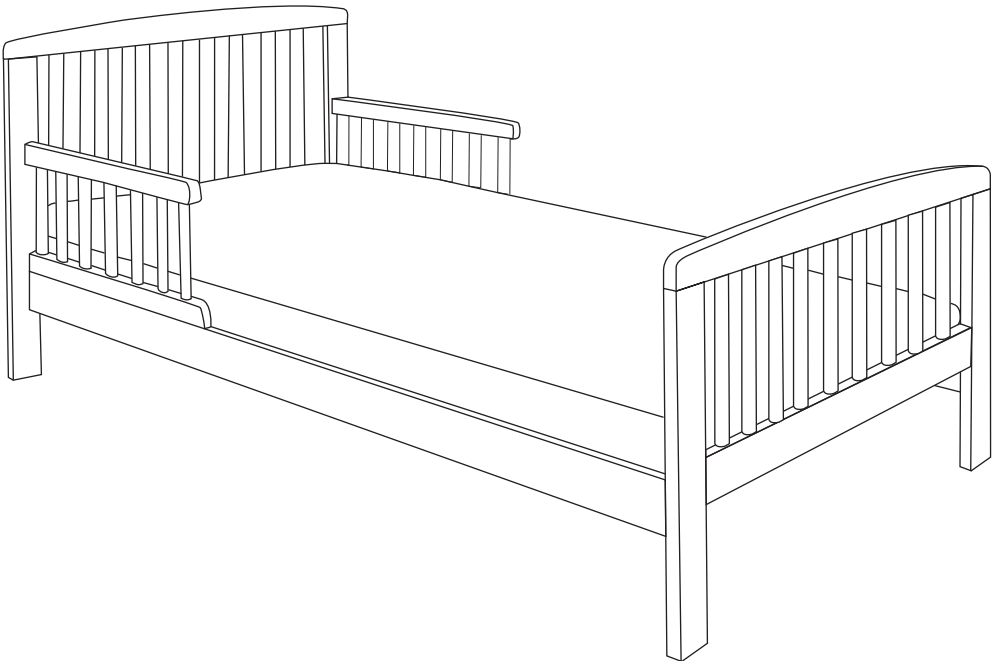
# KINDER VALLEY TODDLER BED

## Assembly Instructions

### Product Size

145cm x 77cm x 63cm\*

# IMPORTANT, RETAIN FOR FUTURE REFERENCE: READ CAREFULLY



\*Size may vary

IMPORTANT- RETAIN FOR FUTURE REFERENCE

Model No: 53002

## Need Help?

With assembly instructions  
missing or damaged parts

**Please Call- 0844 7744644**

**or Email [sales@kinder-valley.com](mailto:sales@kinder-valley.com)**

### BEFORE YOU START

#### IMPORTANT- RETAIN FOR FUTURE REFERENCE- READ CAREFULLY.

This Kinder Valley toddler bed conforms to BS 8509:2008+A1:2011.

This Kinder Valley toddler bed is suitable from approximately 18 months to 4 years. It is intended to be used by one child at a time.

**WARNING:** Do not place this child's bed in close proximity to heat sources, windows and other furniture e.g. open fires, radiators, gas and electric heaters etc.

**WARNING:** Do not use this child's bed if any part is broken, torn or missing and use only spare parts approved by Kinder Valley.

**WARNING:** Do not use more than one mattress.

**WARNING:** Regularly check the screws are secure, loose fittings can result in snagging clothes or cords posing a risk of strangulation.

Assembly fittings should always be tightened properly and care should always be taken that no screws are loose to ensure your child does not trap parts of the body or clothing. Do not over tighten.

- We recommend you use any Kinder Valley mattress size 140cm x 70cm.
- Use only on firm ground which is on a horizontal level and dry.
- Children are likely to play, bounce, jump and climb on beds, therefore the child's bed should not be placed too close to other furniture or windows, blind cords, curtain pulls or other strings or cords, and should be placed either tight to any wall or have a gap of 30cm between the wall and the side of the bed.
- In order to clean, use only a mild detergent and warm water. Do not bleach or use any abrasive substances.
- The bed is designed to be dismantled however the bed guards should not be unfastened from the bed base.

#### Missing parts

Please check that you have all parts before. If you are missing any fixtures and fittings for your product please contact our customer service team on

0844 7744644 and they will be happy to arrange a replacement to be sent to you free of charge.

This Kinder Valley Cot is guaranteed for 12 months from the date of purchase; (please retain your receipt as proof of purchase). If you encounter any problems, you can email us at: [sales@kinder-valley.com](mailto:sales@kinder-valley.com).

Number of people to assemble:

Two adults are required to assemble this item.

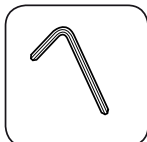


Time to assemble:

1 hour.



Tools required:

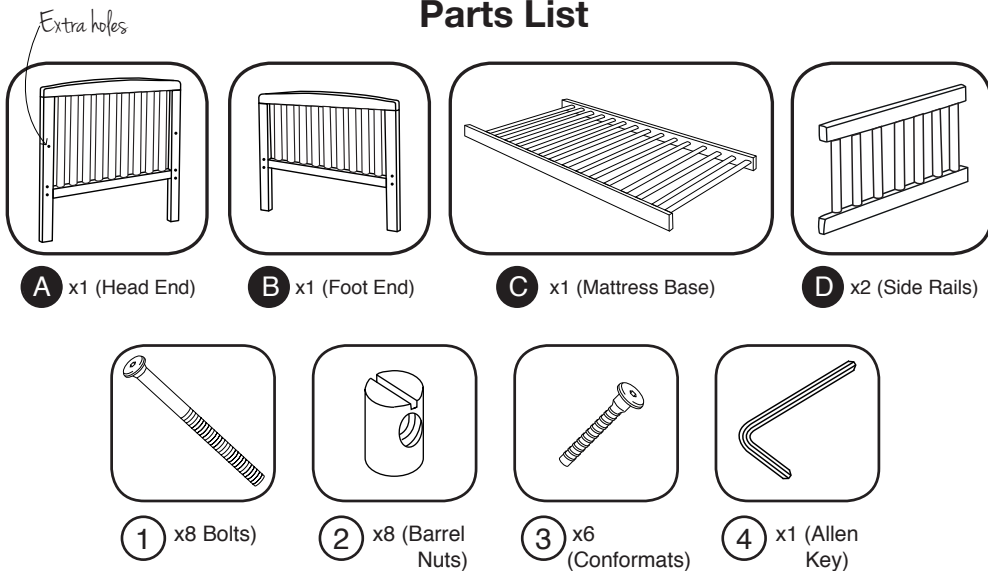


(Included)

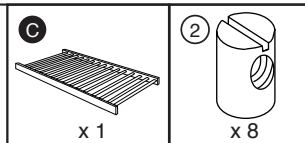
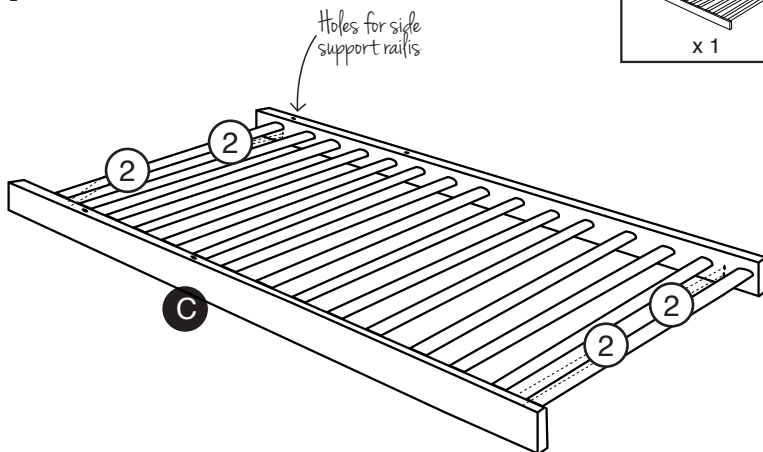
# KINDER VALLEY TODDLER BED

## Assembly Instructions

### Parts List



### Step #1



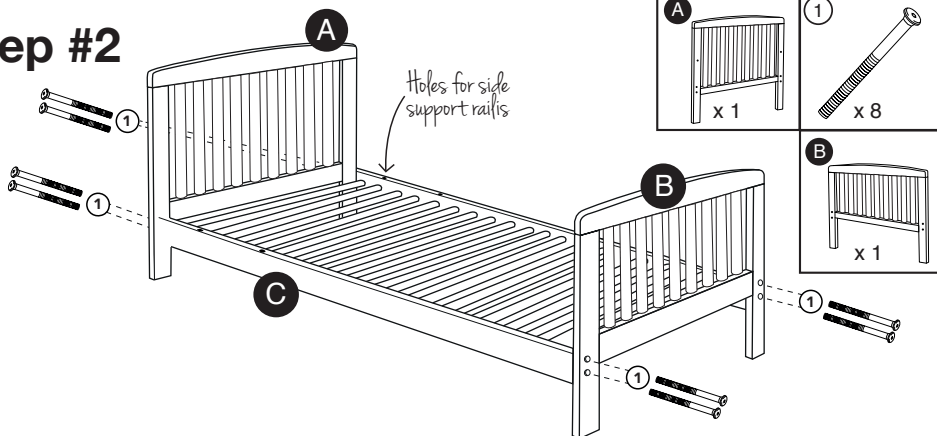
Insert barrel nuts **2** into the 8 holes positioned at the ends, on the inside of the mattress base **C**, as shown above.

Make sure holes are at the top of the base.

# KINDER VALLEY TODDLER BED

## Assembly Instructions

### Step #2

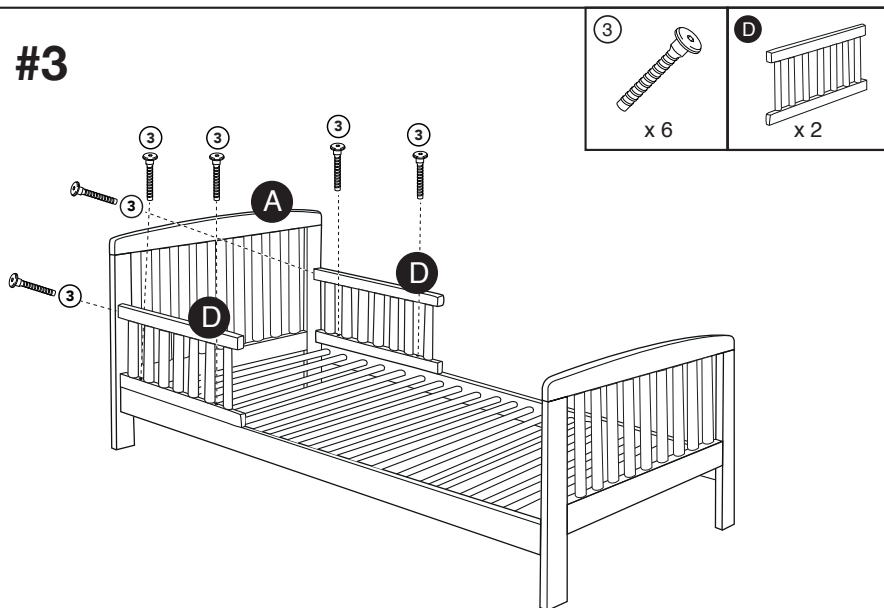


Secure the head bed end **A** to the mattress base **C** into the end closest to the holes in the mattress base, using the bolts **1** in the positions shown above.  
Bolts should enter the barrel nuts as shown in Step #1.

Do not fully tighten the bolts.

Repeat this step for the foot bed end **B**

### Step #3



Insert conformats **1** securing side rails **D** to head board **A** and mattress base **C**  
Tighten all bolts and conformats securely. Do not over tighten.