



- UK +44 (0)845 268 2000
- USA 1-800-490-0331
- CA 1-800-667-4111
- AU 1300 683 034



/mamasandpapasuk
/mamasandpapasusa
/mamasandpapasmatleregion
/mamasandpapasmagyarorszag



@mamasandpapas



/user/mamasandpapasglobal



mamasandpapasblog.com



/mamasandpapas



x1



<15m

BHHC_0365_0114_V1

© Mamas & Papas Ltd. 2014

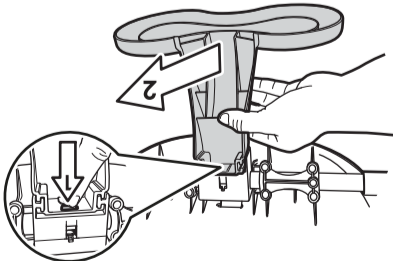
Bop Hi-Lo

IMPORTANT! KEEP FOR FUTURE REFERENCE

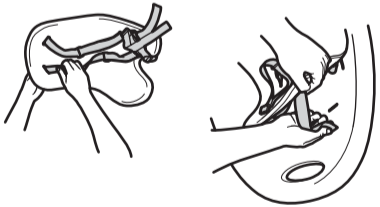
WARNING!

- Do not leave the child unattended.
- Ensure that the harness is correctly fitted and adjusted when the child is in the highchair.
- Do not use the high chair unless all components are correctly fitted and adjusted.
- Be aware of the risk of open fire and other sources of strong heat, such as electric bar fires, gas fires etc. in the vicinity of the high chair.
- IMPORTANT: Ensure the tray is secured in position at all times when the child is in the highchair.
- This highchair is only suitable for children who can sit up unaided.
- Do not use the high chair if any part is broken, torn or missing.
- The highchair can be cleaned using warm water and a mild soap. Never use bleach or abrasive cleaners.
- The highchair is suitable from 6 months to 3 years.

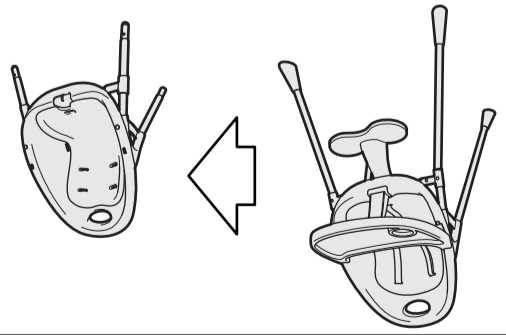
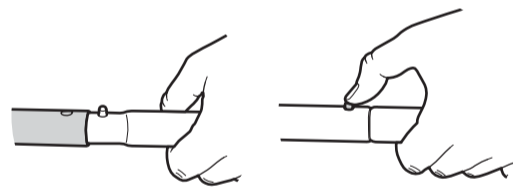
12. Push the pin (1) towards the footrest to release the lock and pull the footrest out of the housing.



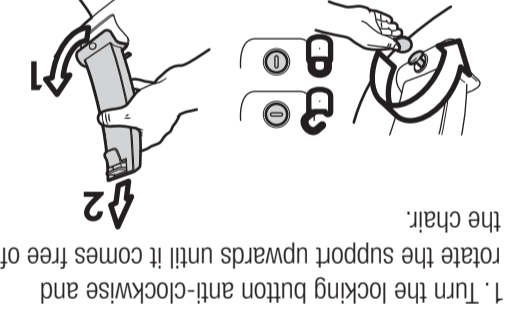
13. Slot the harness buckles through the slots in the seat, then slot them through the slots in the seat pad. Remove the harness.



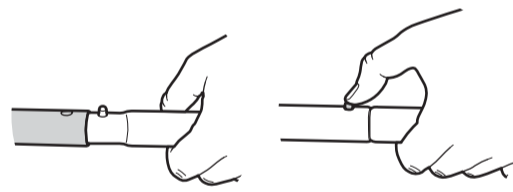
14. Remove the lower parts of the legs by pressing the pin inwards and removing the leg from the slot.



10. Press the catch on the top of the tray support inwards and lift the tray upwards off the highchair.



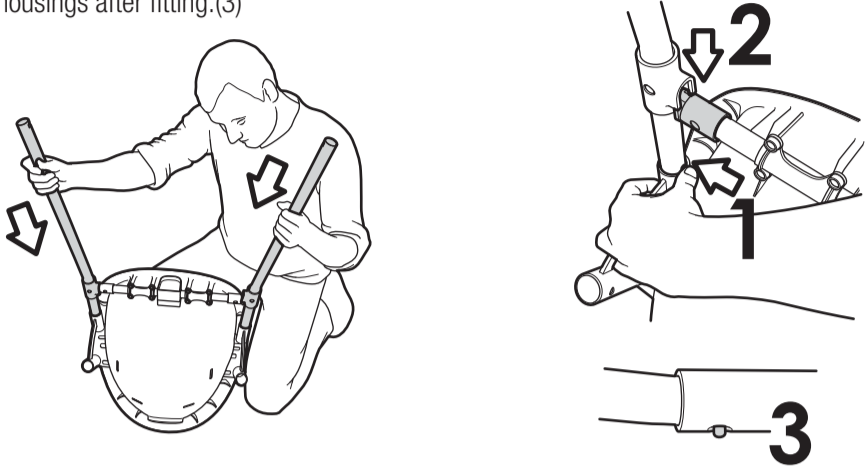
11. Turn the locking button anti-clockwise and rotate the support upwards until it comes free of the chair.



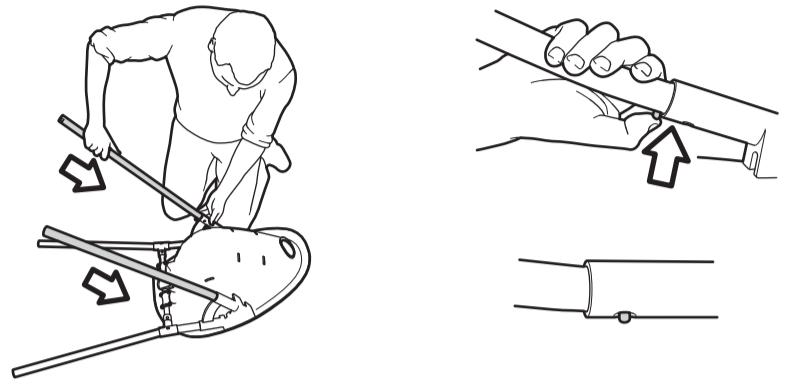
Thank you for ordering from Mamas & Papas. Please do not use the high chair unless all components are correctly fitted and adjusted when the child is in the high chair. Do not use the high chair if any part is broken, torn or missing. The high chair can be cleaned using warm water and a mild soap. Never use bleach or abrasive cleaners. The high chair is suitable from 6 months to 3 years.

Merci d'avoir choisi Mamas & Papas. Merci de ne pas utiliser la chaise haute à moins que tous les composants ne soient correctement installés et ajustés lorsque l'enfant est assis dans la chaise haute. Ne pas utiliser la chaise haute si une partie est cassée, déchirée ou manquante. La chaise haute peut être nettoyée avec de l'eau tiède et un savon doux. N'utilisez jamais de produits abrasifs ou de produits à base de chlore. La chaise haute convient aux enfants âgés de 6 mois à 3 ans.

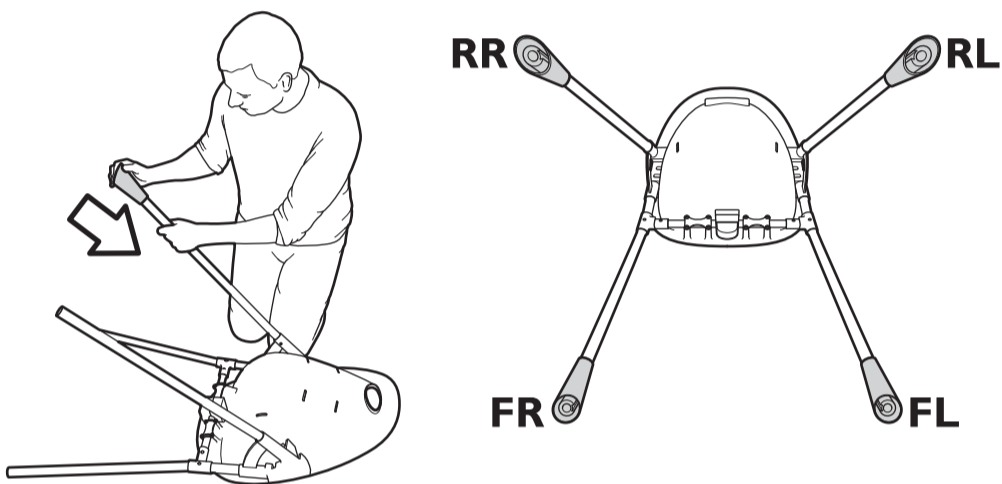
1. Attach the two front legs to the seat. Slot the ends of the legs into the housings on the seat. Push the pins in the tops of the legs in and slide into the housings (1), ensure the ends of the bars on the seat are inserted into the housings on the legs (2). Ensure the pins are protruding through the holes in the housings after fitting.(3)



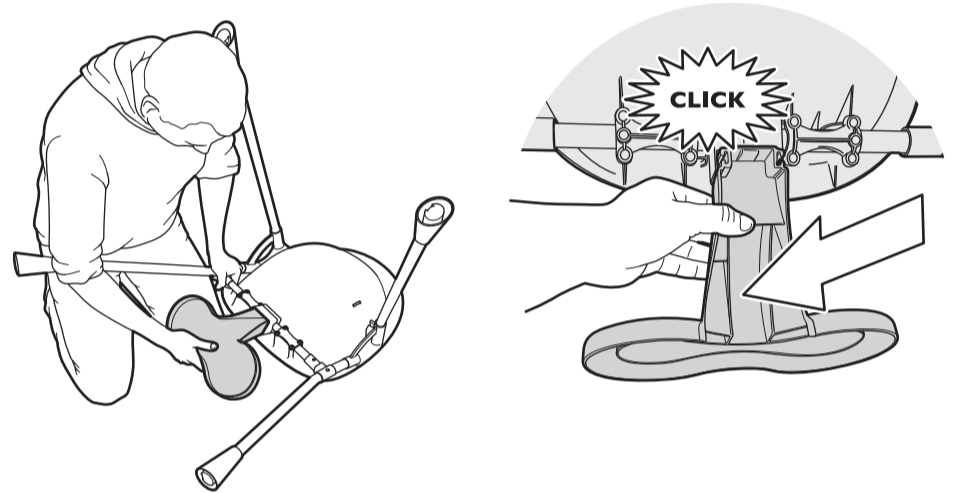
2. Slot the two back legs into the rear housing on the seat. Push the pins on the legs inwards and fully insert into the housing. Ensure the pins are protruding through the holes in the housings after fitting.



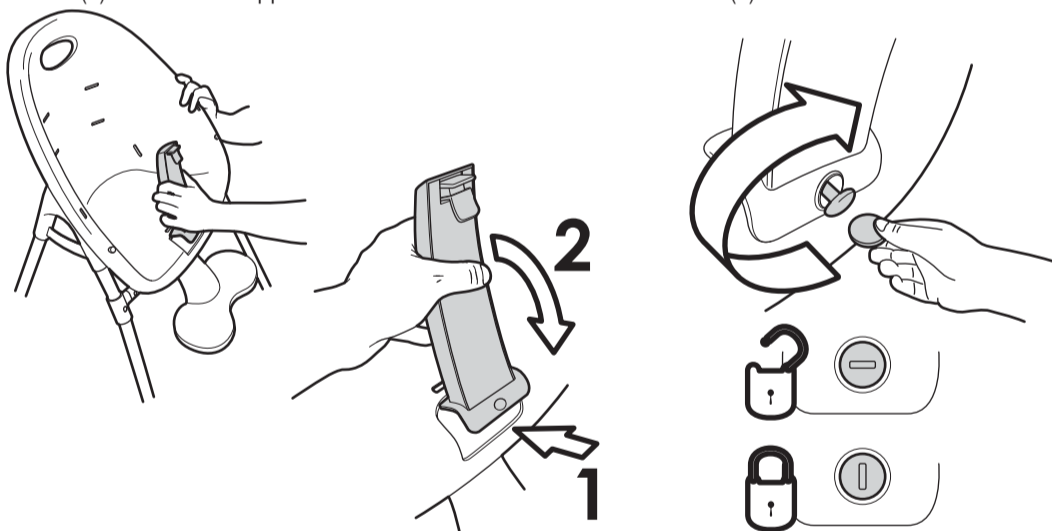
3. Slot the feet onto the ends of the legs. Ensure the feet are slotted onto the correct legs. The base of the feet are marked with two letters, see diagram for the correct fitting.



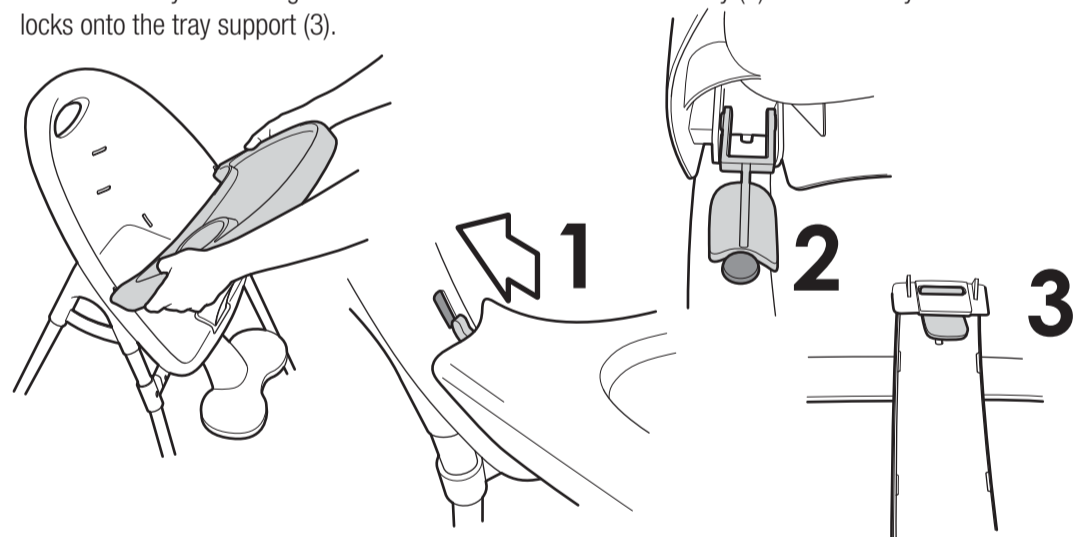
4. Slot the end of the footrest into the housing on the underside of the seat. Push the leg rest in until it locks into the housing.



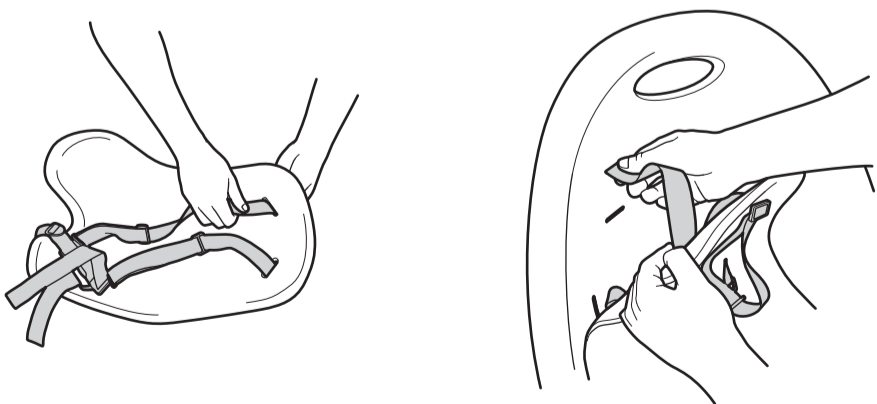
5. Attach the tray support to the front of the seat. Slot the tabs on the back of the support into slots in the seat (1). Rotate the support down until the front locks onto the seat (2).



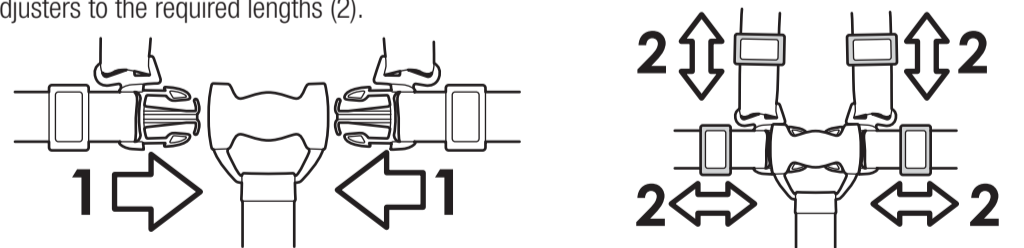
6. Slot the hooks on the ends of the tray into the slots in the sides of the seat (1). Ensure the feet on the ends of the tray are resting on the buttons on the seat under the tray (2). Push the tray down until it locks onto the tray support (3).



7. Slot the buckles on the ends of the harness straps through the slots in the seat pad. Place the seat pad in the seat and slot the buckles through the slots in the seat.



8. Slot the tabs on the waist straps into the buckle (1). To adjust the harness, slide the straps through the adjusters to the required lengths (2).



9. To open the harness, push the locking tabs inwards (1) and slide the two waist strap tabs out of the buckle (2).

