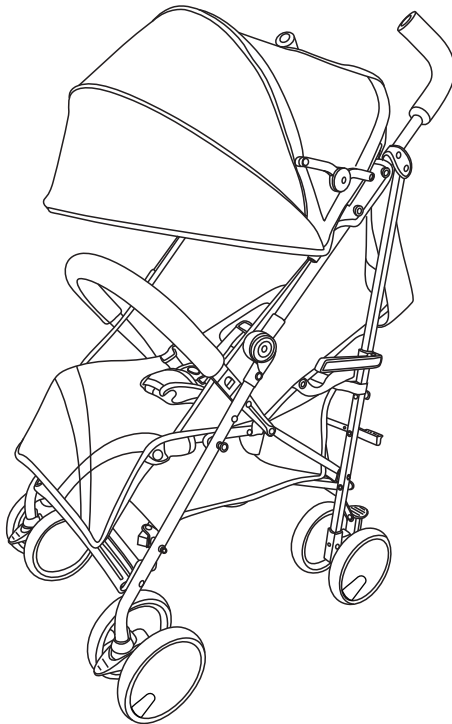




**CUGGL ROWAN COMPLETE PUSHCHAIR RUSTIC BLUE**  
care & instruction manual



**IMPORTANT – READ CAREFULLY AND  
KEEP FOR FUTURE REFERENCE**



## **IMPORTANT – READ CAREFULLY AND KEEP FOR FUTURE REFERENCE**

Thank you for choosing our product. Please always read all the instructions provided carefully before use and remember the child's safety may be affected if you do not follow these instructions. The pushchair is suitable from birth up to 15kg (approx. 36 months), never overload.

### **WARNINGS:**

- Never leave the child unattended
- Ensure that all locking devices are engaged before use.
- To avoid injury ensure that the child is kept away when unfolding and folding this product.
- Do not let the child play with this product.
- Always use the restraint system provided and make sure the harness is correctly fitted
- Always use the crotch strap in combination with the waist belt.
- This product is not suitable for running or skating.
- For a new-born baby, the seat unit should be in the most reclined position.
- The parking device shall be engaged when placing and removing the children.
- The maximum permissible loading for the shopping basket is 3kg.
- Any load attached to the handle and/or on the back and/or on the side will affect the stability of the vehicle.
- Use the stroller for only one child at a time.
- Accessories which are not approved by the manufacturer shall not be used.
- Only replacement parts supplied or recommended by the manufacturer/distributor shall be used.
- Do not use if any part is broken, torn or missing
- Avoid placing the pushchair near naked heat sources such as electric bar fires, etc. or where a child could gain access to any other kinds of hazards.

## Care and Maintenance

### General

This pushchair was designed and manufactured with qualified materials and craftsmanship.

### Always check and inspect your pushchair regularly for:

Worn parts, torn materials or stitching.  
Loose screws, bent or broken frame parts.  
Broken, damaged or missing parts.

Should any of the above be evident do not use and contact the Helpline : 0345 640 2020 for advice.

### Care and Maintenance

Lubricate moving parts regularly, especially the wheels, and lower parts of the chassis that tend to collect dirt.

Fabric parts may be cleaned in accordance with the fabric care labels.

Seat: Sponge clean only.

Footmuff: Maximum temperature 30°C machine washing

Canopy / basket: hand wash only

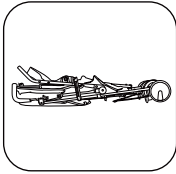
Do not leave the pushchair exposed to heat i.e. by a radiator or in direct sunlight.

If the pushchair chassis parts have been exposed to salt water we recommend that they be rinsed down with fresh ( soapy ) water as soon as possible afterwards.

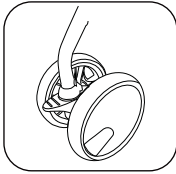
Do not fold or store the product while wet and never store in a damp environment as this can cause mildew to form.

## Contents

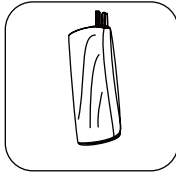
Check all parts are present before assembly



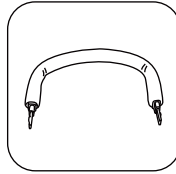
Frame with fabric



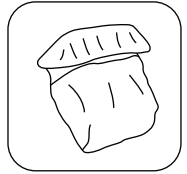
Front wheel



Raincover

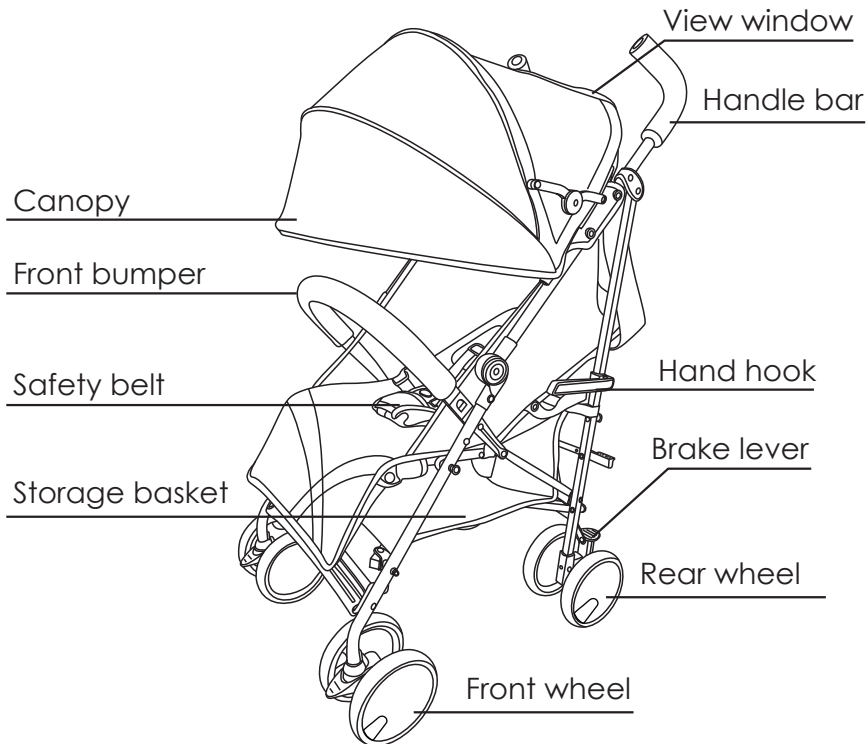


Front bumper



Footmuff

## Name of parts



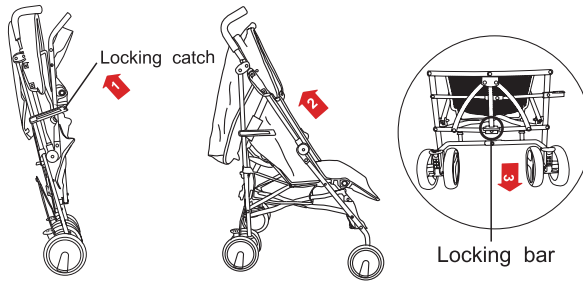
## Assembly

Keep children out of the work area.

1

### Unfold Frame

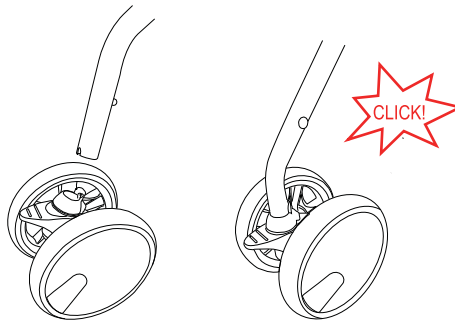
- Locate the locking catch on the side of the stroller and lift to release from the locking stud.
- Unfold the pushchair using both hands. Press the locking bar until it "clicks" into place.



2

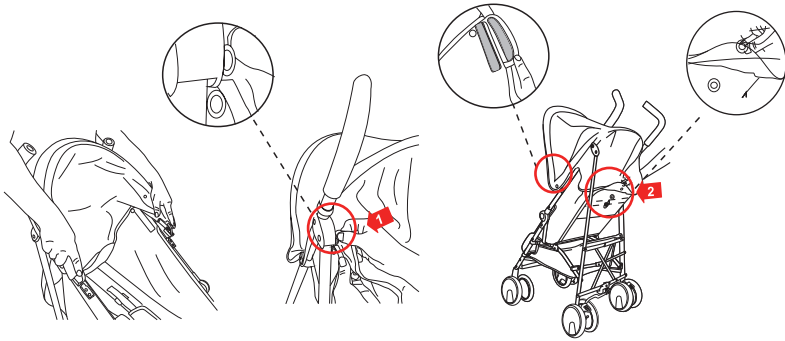
### Assemble the front wheels

- Press down the lock pin on the front tube.
- Insert the front tube into the adaptor on the front wheel until the lock pin has fully engaged into the plastic hole.



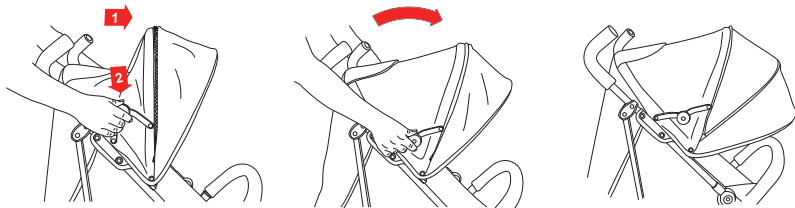
### 3 Fit Canopy

- Slide the plastic part on the canopy onto the corresponding part on the frame.
- Attach the canopy press studs to the corresponding press studs on both sides of the frame and the rear of the backrest.
- Fasten the touch fasteners on both sides of the hood and seat.



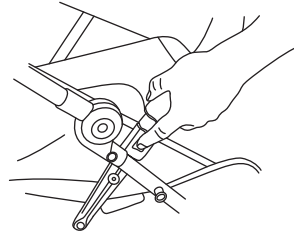
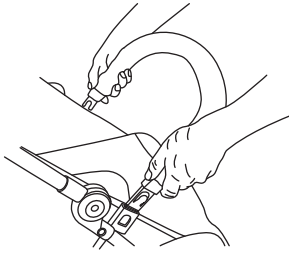
### 4 Adjust Canopy

- Pull the canopy away from the backrest to open (Arrow 1).
- Push down the support plastic part on two sides into positions (Arrow 2).
- Extend the canopy by unzipping the zip.



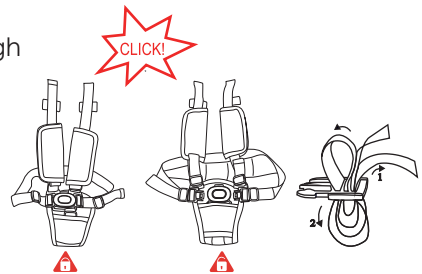
## 5 Assemble front bumper

- Insert the front bumper bar into the openings on the front of the chassis. You should hear a “click”.
- Remove the front bumper by pressing the buttons on two sides.

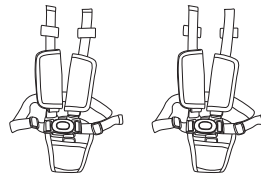


## 6 Harness & Buckle

- **Note:** Thread the shoulder straps through the loops to reduce the shoulder strap height if required.
- To fasten the waist harness: Insert both buckle clips into each side of the buckle until a “Click!” is audible.
- To release the harness: Squeeze the buckles and pull apart.
- To adjust the buckle: Adjust the shoulder straps by moving the slides as shown



insertion



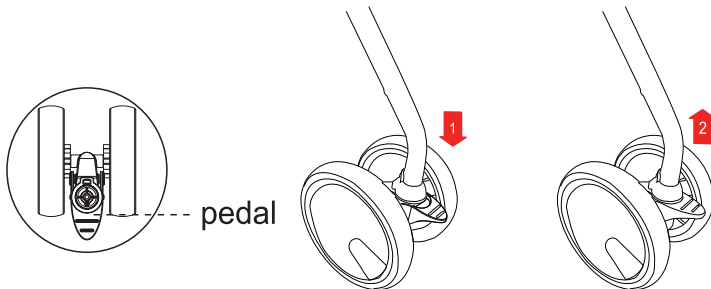


7

**To Lock swivel wheels**

Your pushchair has front locking swivel wheels.

- To lock, rotate the wheel so that the pedal is facing forward.
- Press the pedal down with your foot and you should hear a “Click!” further minor rotation may be required.
- To release the locked swivel wheels simply lift the pedal with your foot.



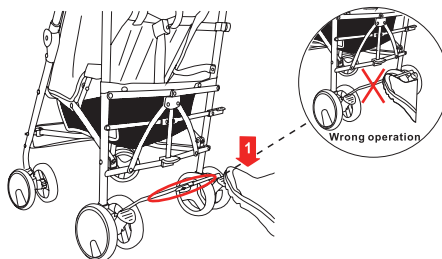
8

**To operate brakes**

- Your stroller has a linked parking brake. To engage brakes simply press down with your foot on the pedal located on the rear wheels.
- To release brakes simply lift the pedal located on the rear wheels with your foot.

**WARNING:** Do not step on the steel bar to apply the brakes.

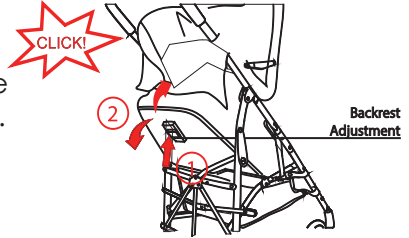
**WARNING:** Roll back and forth to make sure the brakes are engaged before letting go.



9

**To recline backrest**

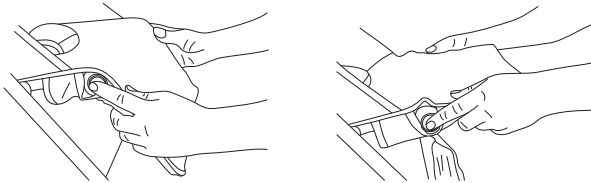
- The backrest has 3 positions, upright, semi-reclined and full reclined.
- Squeeze and hold the seat backrest adjustment lever and move the seat unit upwards or downwards.
- Release the lever once the desired position has been achieved and a "Click!" noise is heard.
- Check the backrest is secure before placing the child into the pushchair.



10

**Adjust the footrest**

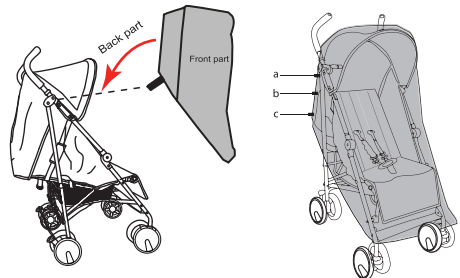
- Press the button on both sides of the footrest simultaneously to adjust it to the desired position.



11

**To fit the raincover**

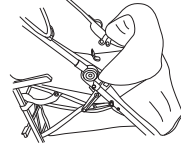
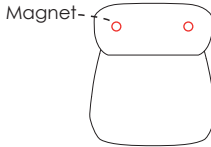
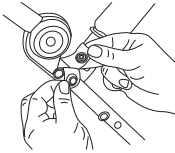
- Place the raincover over the hood and then cover the pushchair.
- Fasten the touch fasteners to the pushchair in positions A, B & C on both sides



12

**To fit the footmuff**

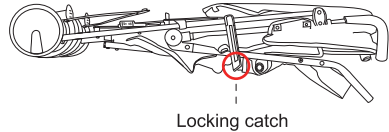
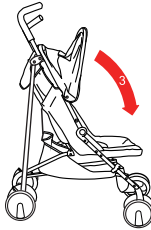
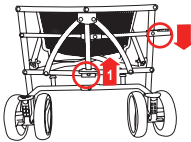
- Place the footmuff on to the stroller, wrap the webbing around the frame and secure in place by the press stud.
- The top of the footmuff can be folded down over the bumper bar and secured in place by two hidden magnets .



**To fold the stroller**

13

- Lift the rear locking catch upwards with your foot (1), push the second locking clip down with your foot (2). The pushchair will begin to fold at this point.
- Push the handles over and the pushchair will naturally catch on the locking catch located on the side of the stroller (3).



Locking catch

## Technical specification

Product title	CUGGL ROWAN COMPLETE PUSHCHAIR RUSTIC BLUE
Argos Cat. No.	2255279
Supplier Ref. No.	U805AF
Age group	0-36M
Weight suitability	From birth up to 15kg
Safety compliance	Complies with EN1888-1:2018+A1:2022
Product weight	9.0kg
Product unfolded size	L77 x W52 x H106cm
Folded size	L34 x W27 x H106cm

If you encounter any problems with this product please call our customer care team on 0345 640 2020

Produced in China. Argos Limited, 489-499 Avebury Boulevard, Milton Keynes, MK9 2NW. Argos (N.I.) Ltd, Forestside Shopping Centre, Upper Galwally, Belfast, United Kingdom, BT8 6FX. Argos Distributors (Ireland) Limited, Unit 7, Ashbourne Retail Park, Ballybin Road, Ashbourne, County Meath, Ireland