

Assembly Instructions

Step 1

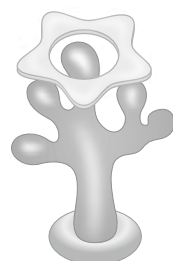
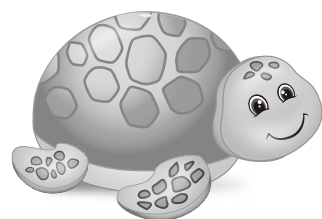
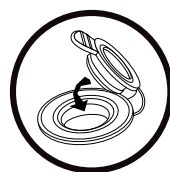
Take out the pool set and spread it over the clear area.

a: Fill waters to the turtle and coral through the drain plug on the bottom.

b: Inflate the pool , turtle, coral and rings.

Note:If the valve cannot be recessed into the unit, it may be the indication of over inflation.

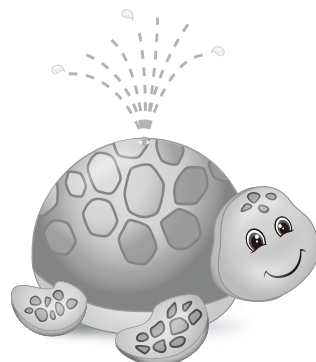
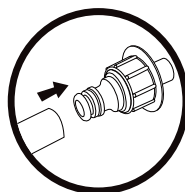
Pinch valve at its base with fingers, insert pressure plug into opening and pump air in. Seal the valve with valve lid and press the valve into the unit to get a flat surface. Do not over inflate or use high -pressure to inflate this product.



Setp 2

Connect the hose connector with garden hose. Turn the connector to tighten until it cannot turn any further.

Notice: Fill with water gradually to avoid damage.



Not suitable for children under 3 years due to small parts, choking hazard.

Produced for Chad Valley Toys. Argos Ltd. Country of origin: CHINA
Address: 489-499 Avebury Boulevard, Central Milton Keynes, MK9 2NW. www.argos.co.uk/chadvalley
If you need help or have damaged or missing parts, call the Customer Helpline: 0345 640 0800.

ADVENTURE POOL SET

Assembly & User Instructions - Please keep for future reference

147/0615



Important

Age: 3 years +

Important – Please read these instructions fully before assembly or use

These instructions contain important information which will help you get the best from your product and ensure safe and correct assembly, use and maintenance.

! Safety Information

Important – Please read these instructions fully before assembly or use

! WARNING

1. Keep the assembly and installation instructions for further reference.
2. Keep out of baby's reach.
3. Not suitable for children under 36 months - small parts, Choking hazard.
4. The product is not a life-saving device.
5. Do not leave child unattended while device is in use.
6. The product must be assembled/disassembled by adult.
7. Area of placement must be flat and even and free of sharp.
8. Outdoor use. Only for domestic use.
9. Do not install over concrete, asphalt or any other hard surface.
10. Only place item on the level surface at least 2m from any structure or obstruction such as a fence, garage, house , overhanging branches, laundry lines or electrical wires. Check no debris underneath that could cause puncture.
11. Children can drown in very small amounts of water. Empty the pool when not in use. To change the water of paddling pools frequently (particularly in hot weather) or when noticeably contaminated.

! ATTENTION

1. Read the manual and follow the instructions relating to safety tips, correct and completed product assembly, setting into service, use and maintenance.
2. For your own safety, always heed the advice and warnings in these instructions.
3. Non-compliance with these operating instructions may expose you to serious danger. Only use the product in the places and conditions for which it is intended.
4. Ensure that riders are properly distributed on the products.
5. Keep away from heat, rough surfaces and all sharp objects.
6. Long time expose product under the sun or close to heat source may deform or damage the product.
7. When moving the inflated product, strongly recommend to deflate the product then do it. That can avoid product damage. In case really need to move it without deflation,prop up the base from bottom instead of hold the product from horizontal body or top portion.
8. See product or packaging for additional warning.

Before use

1. Be sure this item is at room temperature before inflating.
2. Keep away from heat, rough surfaces and all sharp objects.

Maintenance And Care

1. To Store: Simply deflate and gentle and fold. Dry before storing. Stored in a well-ventilated area, keep out of direct sunlight.
2. To Clean: rinse with warm soapy water and hang to dry. Never iron or brush. Do not clean with solvent cleaning agents. It will damage the product permanently.
3. Do not drag while it is loaded or sharp object can puncture.

Repair Instructions

1. Clean area for repair thoroughly.
2. Press patch firmly over puncture.
3. Do not inflate for 30 minutes.

Additional Warnings



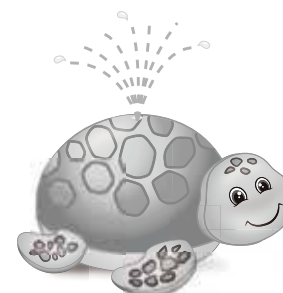
Warning! Never leave your child unattended – drowning hazard.

Parts

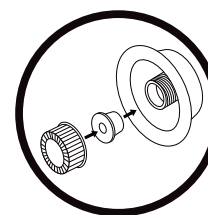
Please check to make sure that you have all the parts and fittings listed below:



1 Family Pool x1



2 Turtle Sprayer x1



4 Free-Flow Valve X 1



3 Coral X1 with Ring X2



5 Repair Patch x 1