

AQUAmate - White 3 Function Shower Set

Installation Manual

Tools needed for installation:

- Drill
 - Screwdriver
 - Screws (included)
- Plastic plugs (Included)
 - Washers (Included)

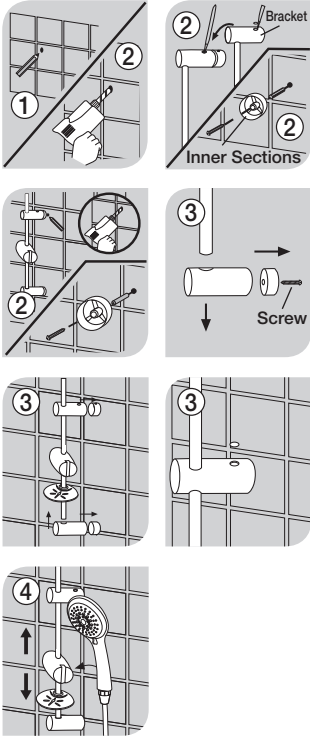
For the Installation of the Riser Rail and Soap Dish:

1. Select desired wall position for the Riser Rail. Remember, when positioning the riser rail, ensure to allow enough space for the shower hose which needs to attach to the shower unit/ mixer. Place the Riser Rail on the wall and mark the outer position of the end caps.
2. Match the inner sections of the brackets to the previously marked position on the wall. Mark the wall for mounting holes. Drill holes with proper size drill bit. Insert wall plugs. Note that the plugs supplied are suitable for solid wall fixing, if fixing into Plasterboard please use suitable plugs (not supplied). Insert screws through the end cap inserters into wall plugs and tighten with a screwdriver.
3. Take out the screw from the lower wall fixing bracket. Then, take out the bracket and insert the soap dish into the Riser Rail in the desired position. Insert back the fixed wall fixing bracket into the Riser Rail. Note that the screw does not need to be placed back into the lower wall fixing bracket. Push the outer bracket over the inner sections until it locates into place.
4. Place the rubber washer (supplied) into the end of the hose and connect the hose to the shower unit/ mixer. Screw shower head to the other end of the hose. Hand tightening should create a water tight seal. Insert the shower head into the shower head holder on the riser rail.

Clean regularly with a non-abrasive liquid bathroom cleaner

Drilling Warning

1. Check there are no hidden cables or pipes before drilling holes for wall plugs.
2. Exercise great care when using power tools near water. The use of a residual current device (RCD) is recommended.



Black



210mm Back

A Guide to - Wall Mounting & Fixings

Important note:

If plastic wall plugs are supplied with your product:



- these are only suitable for use in masonry walls.

If you are in any doubt about the correct wall plugs for your wall, seek professional advice.


Failure of the product due to using incorrect fixings is the responsibility of the installer.



Important: When drilling into walls always check that there are no hidden wires or pipes etc.

Make sure that the screws and wall plugs being used are suitable for supporting your unit. Consult a qualified tradesperson if you are unsure.

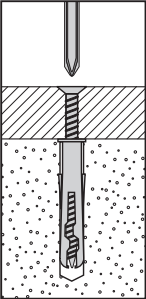
Hints:

- 1: **General rule:**  Always use a larger screw and wall plug if you are not sure.
- 2: Ensure you use the recommended drill bit to match the wall plug and hole size.
- 3: Ensure you drill the hole horizontally, do not force the drill or enlarge the hole.
- 4: Take extra care when drilling high walls, ceilings and ceramic tiles. Ensure wall plugs are inserted beyond the thickness of the ceramic tiles to avoid the tiles splitting or cracking.
- 5: Ensure wall plugs are well fitted and are a tight fit in the drilled hole.

Types of walls

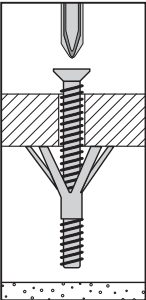
You can use one of the following types of wall plug if your walls are made of brick, breeze block, concrete, stone or wood.

No.1 "General Purpose" wall plug



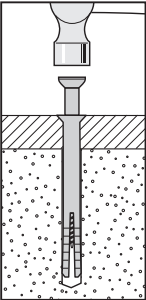
Generally aerated blocks should not be used to support heavy loads, use a specialist fitting in this case. For light loads, general purpose wall plugs can be used.

No.3 "Cavity Fixing" wall plug



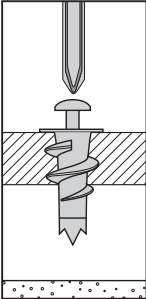
For use with plasterboard partitions or hollow wooden doors.

No.5 "Hammer Fixing" wall plug



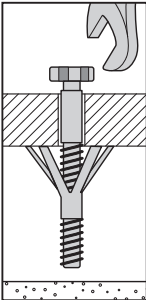
For use with walls stuck with plasterboard. The hammer fixing allows it to be fixed to the wall rather than the plasterboard. Always check the fixing is secure to the retaining wall.

No.2 "Plasterboard" wall plug



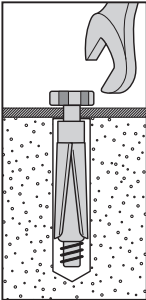
For use when attaching light loads on to plasterboard partitions.

No.4 "Cavity Fixing-Heavy Duty" wall plug



For use when fitting or supporting heavy loads such as shelving, wall cabinets and coat racks.

No.6 "Shield Anchor" wall plug



For use with heavier loads such as TV & HiFi speakers and satellite dishes etc.



Care & Maintenance

Safety: Always check the fitting and location to ensure your safety in and around the home.

Fitting: From time to time check the fitting to ensure the wall plugs or screws do not become loose.

Black

