



BORN INNOVATIVE

EN



Thank you for choosing this product. We are proud to offer the ideal product for you and the best complete range of home appliances for your daily routine.



Please read and follow these instructions carefully and operate the machine accordingly. This booklet provides important guidelines for safe use, installation, maintenance and some useful advice for best results when using your machine. Keep all documentation in a safe place for future reference or for any future owners.

Please check that the following items are delivered with the appliance:

- Instruction manual
- Guarantee card
- Energy label

Check that no damage has occurred to the machine during transit. If it is, call for service by Customer Service Centre. Failure to comply with the above can compromise the safety of the appliance. You may be charged for a service call if a problem with your machine is caused by misuse or by incorrect installation.

To contact the Service, ensure that you have the unique 16-character code available, also called the "serial number". This code is a unique code for your product, printed on the sticker that can be found inside the door opening.

Environmental conditions



This appliance is marked according to the European directive 2012/19/EU on Waste Electrical and Electronic Equipment (WEEE).

WEEE contains both polluting substances (which can cause negative consequences for the environment) and basic components (which can be re-used). It is important to have WEEE subjected to specific treatments, in order to remove and dispose properly all pollutants, and recover and recycle all materials. Individuals can play an important role in ensuring that WEEE does not become an environmental issue; it is essential to follow some basic rules:

- WEEE should not be treated as household waste;
- WEEE should be handed over to the relevant collection points managed by the municipality or by registered companies. In many countries, for large WEEE, home collection could be present.

In many countries, when you buy a new appliance, the old one may be returned to the retailer who has to collect it free of charge on a one-to-one basis, as long as the equipment is of equivalent type and has the same functions as the supplied equipment.

Contents

- 1. GENERAL SAFETY RULES**
- 2. DRAIN HOSE KIT**
- 3. WATER CONTAINERS**
- 4. DOOR, FILTERS AND HEAT EXCHANGER**
- 5. PRACTICAL HINTS**
- 6. REMOTE CONTROL (WI-FI)**
- 7. QUICK USER GUIDE**
- 8. CONTROLS AND PROGRAMMES**
- 9. TROUBLESHOOTING AND WARRANTY**

1. GENERAL SAFETY RULES

- This appliance is intended to be used in household and similar applications such as:
 - Staff kitchen areas in shops, offices and other working environments;
 - Farm houses;
 - By clients in hotels, motels and other residential type environments;
 - Bed and breakfast type environments.A different use of this appliance from household environment or from typical housekeeping functions, as commercial use by expert or trained users, is excluded even in the above applications. If the appliance is used in a manner inconsistent with this it may reduce the life of the appliance and may void the manufacturer's warranty. Any damage to the appliance or other damage or loss arising through use that is not consistent with domestic or household use (even if located in a domestic or household environment) shall not be accepted by the manufacturer to the fullest extent permitted by law.
- This appliance can be used by children aged from 8 years and above and persons with reduced physical, sensory or mental capabilities or lack of experience and knowledge if they have been given supervision or instruction concerning use of the appliance

in a safe way and understand the hazards involved.

Children shall not play with the appliance. Cleaning and user maintenance shall not be made by children without supervision.

- Children should be supervised to ensure that they do not play with the appliance.
- Children of less than 3 years should be kept away unless continuously supervised.



WARNING

Misuse of a tumble dryer may create a fire hazard.

- This machine is solely for domestic use, i.e. to dry household textiles and garments.
- Ensure that the instructions for installation and use are fully understood before operating the appliance.
- Do not touch the appliance when hands or feet are damp or wet.
- Do not lean on the door when loading the machine or use the door to lift or move the machine.
- Do not continue to use this machine if it appears to be faulty.

- The tumble dryer is not to be used if industrial chemicals have been used for cleaning.




WARNING

Do not use the product if the fluff filter is not in position or is damaged; fluff could be ignited.

- Lint and fluff must not be allowed to collect on the floor around the outside of the machine.



WARNING:

Where the hot surface symbol  is located the temperature rise during operation of the tumble dryer may be in excess of 60 degrees C.

- Always remove the plug before cleaning the appliance.
- The drum inside may be very hot. Always allow the dryer to complete the cool down period before removing the laundry.
- The final part of a tumble dryer cycle occurs without heat (cool down cycle) to ensure that the

items are left at a temperature that ensures that the items will not be damaged.



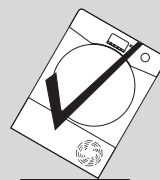
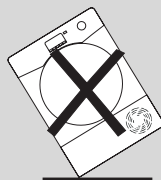
WARNING

Never stop a tumble dryer before the end of the drying cycle unless all items are quickly removed and spread out so that the heat is dissipated.



WARNING

During transport ensure that the dryer is in an upright position, if it's necessary you can only flip in the side shown.



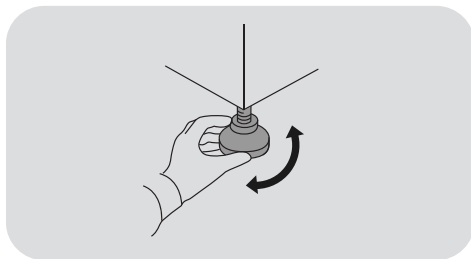
If the product is in different side, wait at least 4 hours before switching on so that the oil can flow back into the compressor. Failure to do this could result in damage to the compressor.

Installation

- Do not install the product in a low temperature room or in a room where there is a risk of frost occurring. At temperature around freezing point the product may not be able to operate properly: there is a risk of damage if the water is allowed to freeze in the hydraulic circuit (valves, hoses, pumps). For a better product performance the ambient room temperature must be between 5-35°C. Please note that operating in cold condition (between +2 and +5°C) might simply some water condensation and water drops on floor.
- In cases where the dryer is installed on top of a washing machine, a suitable stacking kit must be used according to the configuration of your appliance:
 - Stacking kit "standard size": for washing machine with minimum depth of 44 cm;
 - Stacking kit "slim size": for washing machine with minimum depth of 40 cm.
 - Universal stacking kit with sliding: for washing machine with minimum depth of 47 cm.

The stacking kit shall be obtainable from service. The instructions for installation and any fixing attachments, are provided with the stacking kit.

- NEVER install the dryer up near curtains.
- The appliance must not be installed behind a lockable door, a sliding door or a door with a hinge on the opposite side to that of the tumble dryer, in such way that a full opening of the tumble dryer door is restricted.
- For your safety, the appliance must be correctly installed. If there is any doubt about installation, call Service for advice.
- Once the machine is in place the feet should be adjusted to ensure that the machine is level.



Electrical connections and safety instructions

- The technical details (supply voltage and power input) are indicated on the product rating plate.

- Make sure that the electrical system is earthed, complies with all applicable law and that the (electricity) socket is compatible with the plug of the appliance. Otherwise, seek qualified professional assistance.



WARNING

The appliance must not be supplied through an external switching device, such as a timer, or connected to a circuit that is regularly switched on and off by a utility.

- Do not use adapters, multiple connectors and/or extensions.
- The plug should be accessible for disconnection after the appliance has been installed.
- Do not plug the machine in and switch it on at the mains until the installation is completed.
- If the supply cord is damaged, it must be replaced by the manufacturer, its service agent or similarly qualified persons in order to avoid a hazard.

Ventilation

- Adequate ventilation must be provided in the room where the tumble dryer is located to prevent gases from appliances burning other fuels, including open fires, being drawn into the room during operation of the tumble dryer.
- Install the rear of the appliance close to a wall or vertical surface.
- There should be a gap of at least 12 mm between the machine and any obstructions. The inlet and outlet air should be kept clear of obstruction.
- Make sure carpets or rugs do not obstruct the base or any of the ventilation openings.
- Prevent items from falling or collecting behind the dryer as these may obstruct the air inlet and outlet.
- Exhaust air must not be discharged into a flue which is used for exhausting fumes from appliances burning gas or other fuels.
- Check regularly that the air flowing around the dryer is not restricted, avoiding accumulation of dust and lint.

- Check frequently the fluff filter after use, and clean, if necessary.

The Laundry

- Always refer to the laundry care labels for directions on suitability for drying.
- Fabric softeners, or similar products, should be used as specified by the fabric softener instructions.
- Do not dry unwashed items in the tumble dryer.
- Clothes should be spin dried or thoroughly wrung before they are put into the tumble dryer.
- Clothes that are dripping wet should not be put into the dryer.



WARNING

Foam rubber materials can, under certain circumstances, when heated become ignited by spontaneous combustion. Items such as foam rubber (latex foam), shower caps, waterproof textiles, rubber backed articles and clothes or pillows fitted with foam rubber pads MUST NOT be dried in the tumble dryer.



WARNING

Do not tumble dry fabrics treated with dry cleaning fluids.

- Glass fibre curtains should NEVER be put in this machine. Skin irritation may occur if other garments are contaminated with the glass fibres.
- Items that have been soiled with substances such as cooking oil, acetone, alcohol, petrol, kerosene, spot removers, turpentine, waxes and wax removers should be washed in hot water with an extra amount of detergent before being dried in the tumble dryer.
- Remove all objects from pockets such as lighters and matches.
- Lighters and matches must not be left in pockets and NEVER use flammable liquids near the machine.
- Maximum load drying weight: see energy label.
- To consult the product technical specification please refer to the manufacturer website.



WARNING

Fire hazard / Flammable materials.

- The appliance contains **R290**, an eco-sustainable refrigerating gas that is flammable. Keep open flames and sources of ignition away from the appliance.
- Check there is no visible damage on the appliance. Do not use the appliance if it is damaged.
- Should there be any kind of problem, please contact your specialised retailer or one of our customer support centres.

WARNING

Ensure that the openings on the appliance and the openings of the compartment the appliance is fitted in (for built-in models) are clear of obstructions.

WARNING

Do not damage the refrigerating circuit.

- Any repairs or interventions on the appliance must be carried out only by an authorised assistance service.
- Disposing of the device incorrectly could cause fires or poisoning.
- Dispose of the device correctly and do not damage the pipes used for the circulation of the refrigerating fluid.

2. DRAIN HOSE KIT

In order to avoid emptying the water container after each drying cycle, the water can be discharged directly to a waste water drain pipe. Water By-Laws prohibit connection to a surface water drain. The waste water drain pipe should be located adjacent to the tumble dryer.

The kit consists of: 1 hose and 1 bung.

WARNING

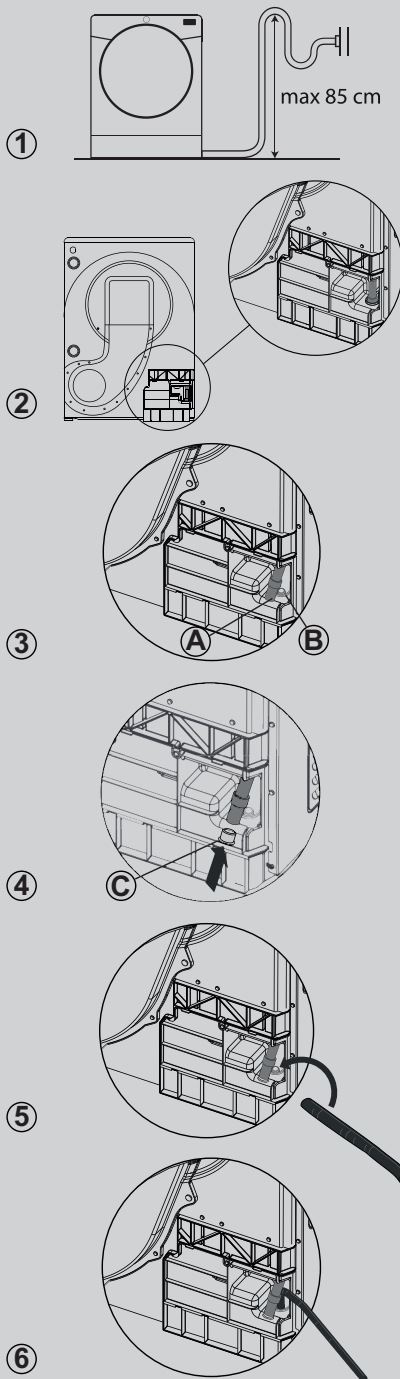
Switch off and remove the tumble dryer plug from the electricity supply before carrying out any work.

The hose must be connected to a drain system with a maximum height of 85 cm compared to the base of the dryer (figure 1).

Fitting the drain hose

1. The water drainage system is located at the back of the machine on the lower right side (figure 2).
2. Disconnect the hose (A) from the fitting (B) by pulling it upwards (figure 3).
3. Close the extracted tube with the cap (C) supplied with the kit (figure 4).
4. Connect the hose into the fitting (B) making sure it is inserted securely (figures 5-6).

Once the machine is in place, check to ensure that the new hose does not kink when pushing the tumble dryer into position.



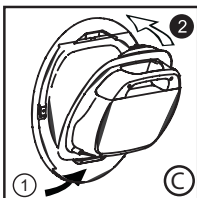
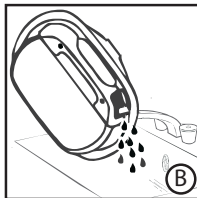
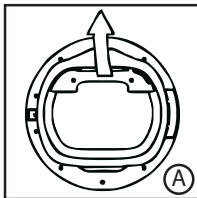
3. WATER CONTAINERS

The water removed from the laundry during the drying cycle is collected in a container. When the container is full, an indicator light, or on some models a message on the display, will advise you that it **MUST** be emptied (however, we recommend to empty it after each drying cycle).

Very little water will collect during the first few cycles of a new machine as an internal reservoir is filled first.

To remove the container tank in door drawer *

1. Gently pull out the water container holding the handle (A).
When it is full the water container will weigh about 6 kg.
2. Tilt the water container to empty the water out through the spout (B).
When empty, replace the water container back as shown; (C) first insert the base of the container into position as shown (1) then gentle push the top into position (2).
3. Press the programme start button to restart the cycle.



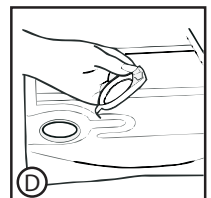
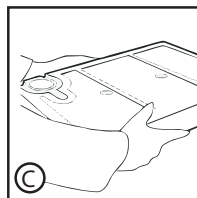
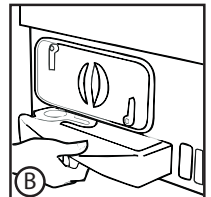
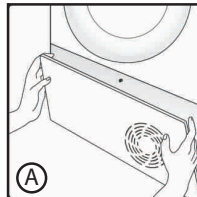
**Depending on model*

ONLY FOR MODELS WITH DRAIN HOSE KIT

If you have the option of drainage near to the dryer you can use the discharge kit to provide a permanent drainage for the water collected in the container of the dryer. This means that you don't have to empty the water container.

To remove the container bottom water drawer *

1. Gently pull the bottom of the kickplate so that it unclips from the dryer. The top section can then be unhinged allowing the kickplate to be completely removed (A).
2. Pull firmly on the handgrip and slide the water container out of the dryer (B). Support the container with both hands (C). **When full, the water container will weigh about 4 kg.**
3. Open the lid located on the top of the container and empty the water (D).
4. Refit the lid and slide the water container back into position (D). **PUSH FIRMLY INTO PLACE.**
5. Refit the kickplate by engaging the hinges at the top and 'snapping' the lower clips into place.



**Depending on model*

4. DOOR, FILTERS AND HEAT EXCHANGER

Door

- Pull on handle to open the door.
- To restart the appliance, close the door and press the programme start button.

WARNING

When the tumble dryer is in use the drum and door may be **VERY HOT**.

WARNING

(For models with water collection tray) If you open the door mid cycle, before the cool-down cycle has completed, the handle may be hot. Please use extreme caution when attempting to empty the water reservoir during the cycle.

Filters and heat exchanger

Clogged filters and heat exchanger could increase the drying time and cause damages and expensive cleaning operation.

In order to have the maximum effectiveness of the machine, checking the cleanliness of all filters before each drying cycle is essential.

WARNING

Do not use the tumble dryer without the filters.

Lint filters and heat exchanger cleaning indicator light

The indicator light illuminates in fixed mode to signal the need of cleaning the lint filters and in blinking mode to signal the need of cleaning the heat exchanger.

If the laundry is not drying check that the filters are not clogged.

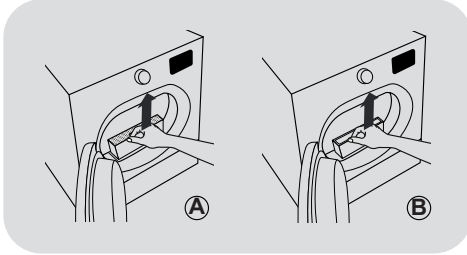
If you clean filters under water, remember to dry them.

WARNING

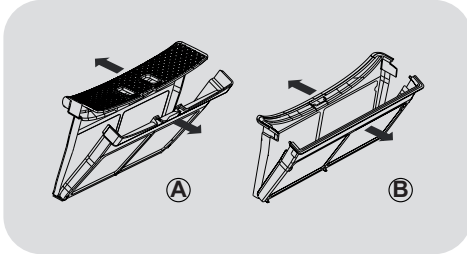
Clean the filters before every cycle.

To clean the lint filters

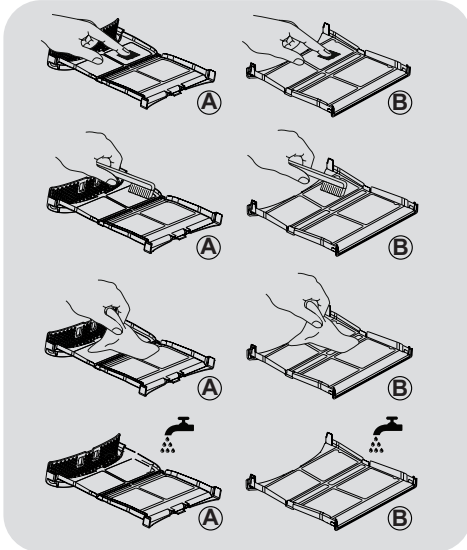
1. Extract the two filters **A** and **B** in sequence pulling them upwards, as shown in the figure.



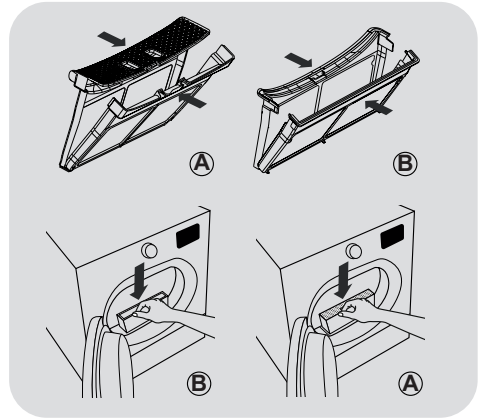
2. Open the filters.



3. Gently remove lints from both filters using your fingertips or a soft brush, a cloth or under water running.



4. Close both filters by repositioning them inside the door, making sure they are positioned correctly in place.



! WARNING

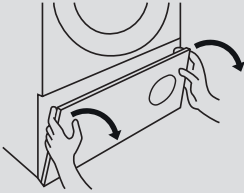
Before reinserting the filters, make sure there is no lint residue inside the compartment; if not, remove it with a vacuum cleaner.

To clean the heat exchanger

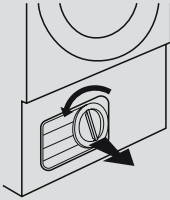
WARNING

Clean the exchanger every six months or when the filters cleaning indicator light blinks.

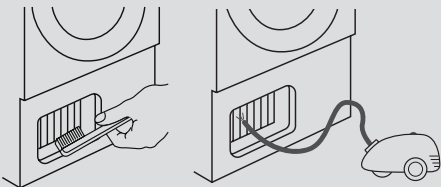
1. Remove the kickplate.



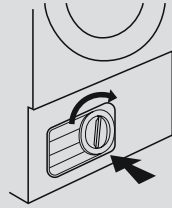
2. Turn the handle anti-clockwise and pull out the front cover.



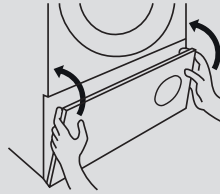
3. Gently clean the heat exchanger using a soft brush or a vacuum cleaner, to remove any dust or fluff, paying attention to not damage the fins.



4. Refit the front cover ensuring it is in the right position. Turn the handle clockwise to lock the front cover.



5. Refit the kickplate.



WARNING

Do not touch the fins with hands in order to avoid injury.
Be careful when cleaning in order not to damage the heat exchanger.

5. PRACTICAL HINTS

Before using the tumble dryer for the first time:

- Please read this instruction book thoroughly.
- Remove all items packed inside drum.
- Wipe the inside of the drum and door with a damp cloth to remove any dust which may have settled in transit.

Clothes preparation

Make sure that the laundry you are going to dry is suitable for drying in a tumble dryer, as shown by the care symbols on each item. Check that all fastenings are closed and that pockets are empty. Turn the articles inside out. Place clothes loosely in the drum to make sure that they don't get tangled.

Do not tumble dry

Silk, nylon stockings, delicate embroidery, fabrics with metallic decorations, garments with PVC or leather trimmings.



WARNING

Do not dry articles which have been treated with a dry cleaning fluid or rubber clothes (danger of fire or explosion).

During the last 15 minutes the load is always tumbled in cool air.

Energy saving

Only put into the tumble dryer laundry which has been thoroughly wrung or spin-dried. The drier the laundry the shorter the drying time thus saving electricity.

ALWAYS

- Check that the filters are clean before every drying cycle.





NEVER

- Put dripping wet items into the tumble dryer, this may damage the appliance.

Sort the load as follows

● By care symbols

These can be found on the collar or inside seam:

-  Suitable for tumble drying.
-  Tumble drying at high temperature.
-  Tumble drying at low temperature only.
-  Do not tumble dry.

If the item does not have a care label it must be assumed that it is not suitable for tumble drying.

● By amount and thickness

Whenever the load is bigger than the dryer capacity, separate clothes according to thickness (e.g. towels from thin underwear).

● By type of fabric

Cottons/linen: Towels, cotton jersey, bed and table linen.

Synthetics: Blouses, shirts, overalls, etc. made of polyester or polyamid, as well as for cotton/synthetic mixes.



WARNING

Do not overload the drum, large items when wet exceed the maximum admissible clothes load (for example: sleeping bags, duvets).

Cleaning the dryer

- Clean the filters after every drying cycle.
- In models equipped with a water collection tray, the tray should be emptied after every drying cycle.
- Wipe the outside of the machine and the door with a soft cloth.
- DO NOT use abrasive pads or cleaning agents.
- To prevent the door sticking or the buildup of fluff clean the inner door and gasket with a damp cloth after every drying cycle.



WARNING

The drum, door and load may be very hot.

NE



WARNING

Always switch off and remove the plug from the electricity supply before cleaning this appliance.



WARNING

For electrical data refer to the rating label on the front of the dryer cabinet (with the door open).

6. REMOTE CONTROL (WI-FI)

This appliance is equipped with **Wi-Fi** technology that allows you to control it remotely via App.

APPLIANCE PAIRING (ON APP)

- Download the **hOn App** on your device by framing the following QR code:



or by the link:

go.haier-europe.com/download-app


The App is available for devices running both Android and iOS, both for tablets and for smartphones.

Get all the details of the Wi-Fi functions by browsing the App in DEMO mode.

The frequency of the home Wi-Fi network has to be set on the 2.4 GHz band. You can not configure the machine if your home network is set to the 5 GHz band.

- Open the App, create the user profile (or log-in if it is already created previously) and pairing the appliance following the instructions on the device display.

TO ENABLE REMOTE CONTROL

- Check that the router is switched on and connected to the Internet.
- Load the laundry and close the door.
- Turn the programme selector to the **REMOTE CONTROL (Wi-Fi)** position : the controls on the control panel will be disabled.

- Start the cycle using the app. When the cycle has been completed, turn off the machine by turning the programme selector to the **OFF** position.

TO DISABLE REMOTE CONTROL

- To exit **REMOTE CONTROL** mode while a cycle is underway, turn the programme selector to any position other than **REMOTE CONTROL (Wi-Fi)**, **without going through the OFF**. The control panel on the appliance will be operative once again.
- With the door closed, turn the programme selector to the **REMOTE CONTROL (Wi-Fi)** position to control the appliance using the app once again. If there is a cycle underway, it will continue.

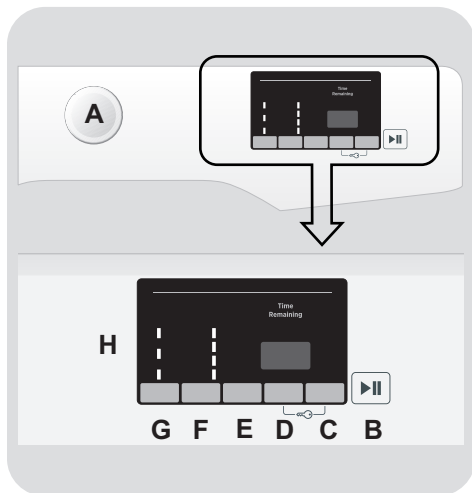
With the door opened, the **REMOTE CONTROL** will be disabled. To enable it again, close the door, turn the programme selector to any position other than **REMOTE CONTROL** and then select it again.

7. QUICK USER GUIDE

1. Open the door and load the drum with laundry. Ensure that garments do not hinder closure of the door.
2. Gently close the door pushing it slowly until you hear the door 'click' shut.
3. Select the desired drying programme by turning the programme knob or, in some models, by pressing the specific button (check the programme table for specific details).
4. Press the programme start button. The dryer will start automatically.
5. If the door is opened during the programme to check the laundry, it is necessary to press programme start to recommence drying after the door has been closed.
6. When the cycle is nearing completion the machine will enter the cool down phase, the clothes will be tumbled in cool air allowing the load to cool down.
7. Following the completion of the cycle the drum will rotate intermittently to minimize creasing. This will continue until the machine is switched **OFF** or the door is opened.

Do not open the door during the automatic programmes in order to obtain a proper drying.

8. CONTROLS AND PROGRAMMES



- A PROGRAMME SELECTOR with OFF position**
- B START/PAUSE button**
- C DELAY START button**
- D TIME CYCLE SELECTION/RAPIDS button**
- E MEMO button**
- F DRYING SELECTION button**
- G ANTI CREASE button**
- H DISPLAY**
- C+D CHILD LOCK**

Technical data

Power input / Power current fuse amp/

Supply voltage: see rating plate.

Maximum load: see energy label.

Energy class: see energy label.



WARNING

Don't touch the buttons while inserting the plug because the machine calibrates the systems during the first seconds: touching the buttons, the machine couldn't work properly. In this case, remove the plug and repeat the operation.

PROGRAMME SELECTOR with OFF position

- Rotating the programme selector in both directions it's possible to select the desired drying programme.
- To cancel the selections or switch off the appliance rotate the programme selector on **OFF** (remember to unplug the appliance).

START/PAUSE button

Close the porthole **BEFORE** pressing the **START/PAUSE** button.

- To start the selected cycle with the preset parameters, press **START/PAUSE**. When the programme is running, the display will show the time to elapse.
- Moreover, if you want to modify the chosen programme, press the desired options buttons, modify the default parameters and then press **START/PAUSE** button to start the cycle.

Only the options compatible with the set programme can be selected.

- After switching on the appliance, wait a few seconds for the programme to start running.

PROGRAMME DURATION

- When a programme is selected the display automatically shows the cycle duration, which can vary, depending on the options selected.

- Once the programme has started you will be kept informed constantly of the time remaining to the end of the drying cycle.
- The appliance calculates the time to the end of the selected programme based upon a standard loading, during the cycle, the appliance corrects the time to the humidity level of the load.

PROGRAMME END

- "**END**" ("**End**" on some models) will appear in the display at the end of the programme, it is now possible to open the door.
- At the end of the cycle, turn off the appliance by turning the programme selector to the **OFF** position.

The programme selector must **ALWAYS** be put in the **OFF** position at the end of the drying cycle before a new one can be selected.

PAUSING THE MACHINE

- Keep the **START/PAUSE** button pressed for about **2 seconds** (the residual time display will flash, showing that the machine is paused).
- Press the **START/PAUSE** button again to re-start the programme from the point it had been paused at.

CANCELLING THE SET PROGRAMME

- To cancel the programme, turn the programme selector to the **OFF** position.

*If there is a break in the power supply whilst the machine is operating, when the power is restored, by pressing the **START/PAUSE** button, the machine will restart from the beginning of the phase it was in when the power was lost.*

DELAY START button

- This button allows to delay the start of the programme from **30 minutes (1 hour on some models) to 24 hours in 30 minutes intervals (1 hour on some models)**. The delay selected is shown on the display.
- After pressing the **START/PAUSE** button the time showed decrease minute after minute.

Opening of the porthole with delayed start set, after re-closing the porthole, press start again to resume the counting.

TIME CYCLE SELECTION/RAPIDS button

- It's possible transform a cycle from automatic to programmed, up to **3 minutes** after the start of the cycle.
- The progressive pressure increases the time in **10 minute** intervals. After this selection to reset the automatic drying functioning is necessary to switch off the dryer.
- In case of incompatibility, all indicator lights flash quickly for 3 times.
- If the programme selector is positioned on the rapid programmes, the progressive pressure of the key allows you to choose the cycle time between: **30-45-59 minutes**.

MEMO button

This button allows you to store the options set on a cycle.

MEMORY:

when the cycle is running push the button **MEMO** for **3 seconds**. The writing **MEMO** (all the digit on some models) will blink for **2 seconds** and the options connected to the cycle selected will be set.


RECALL:


after the selection of the cycle push the button **MEMO** for recall the stored options (not the cycle).


The delay start function can't be memorized.


DRYING SELECTION button

- This button allows to set the desired dryness level editable option up to **3 minutes** after the starting of the cycle:

 **Ready to Iron:** it leaves the garments slightly wet to facilitate ironing.

 **Dry Hanger:** to get garment ready to be hang.

 **Dry wardrobe:** for laundry that can be directly stored.

 **Extra-dry:** to get completely dry garments, ideal for full load.

- This appliances is equipped with **Drying Manager** function. On automatic cycles, each level of intermediate drying, prior to the reaching the selected one, is indicated by flashing the light indicator corresponding to the degree of drying reached.

In case of incompatibility, all indicator lights flash quickly for 3 times.

ANTI CREASE button

- During the cycle the option sets alternate movements of the drum to reduce the folds and automatically sets the drying level to **"Ready to Iron"** (the drying level can be changed after selecting the options). Moreover this option activate an anti-creases movement of the drum pre cycle in case of activation of the delay and at the end of drying cycle. It is activated every 10 minutes, up to 6 hours after the end of the drying cycle.

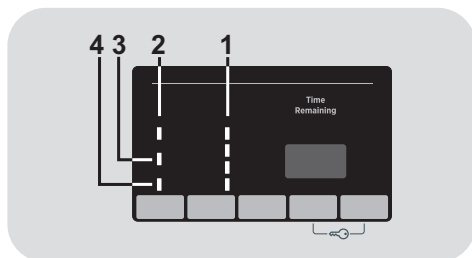
- To stop the movements set the programme selector to **OFF**. Useful when it's not possible to remove immediately the laundry.

CHILD LOCK

- Pressing simultaneously the buttons "**C**" and "**D**" for about **2 seconds**, the machine allows you to lock the keys. In this way, you can avoid making accidental or unwanted changes if a button on the display is pressed accidentally during a cycle.
- The key lock can be simply cancelled by pressing the two buttons simultaneously again.
- In case of opening of porthole with activated **CHILD LOCK**, the cycle stops but the lock is kept: to restart the cycle, you must remove the lock and press **START/PAUSE** again.
- **CHILD LOCK** can be modified at any time of the cycle.

Display

The display shows the remaining time for drying, the postponed time in case of delayed start selection and other notifications setting.



1) DRYING SELECTION INDICATOR LIGHTS

The indicator lights display the degrees of dryness that can be selected by the relevant button.

2) WATER CONTAINER INDICATOR LIGHT

It lights up when it's necessary to empty the condensate water tank.


3) LINT FILTERS AND HEAT EXCHANGER CLEANING INDICATOR LIGHT

The indicator light illuminates in fixed mode to signal the need of cleaning the lint filters and in blinking mode to signal the need of cleaning the heat exchanger.

4) Wi-Fi INDICATOR LIGHT

- On models equipped with Wi-Fi, it indicates the status of the connection. It could be:
 - **FIXED ON**: remote control enabled.
 - **SLOW FLASHING**: remote control disabled.
 - **QUICK FLASHING FOR 3 SECONDS, THEN OFF**: the machine cannot connect to the home Wi-Fi network or has not yet been associated with the App.
 - **SLOW BLINKING FOR 3 TIMES, THEN OFF FOR 2 SECONDS**: reset of the Wi-Fi network (during the association with the App).
 - **ON FOR 1 SECOND, THEN OFF FOR 3 SECONDS**: the door is open. Remote control cannot be activated.
- For all the information about the functionality and the instructions for an easy configuration of the Wi-Fi, please refer to: go.he.services/htd-3d

Drying Guide

The standard cycle COTTON DRY () is the most energy efficient and best suited for drying normal wet cotton laundry.

The table in last page shows the approximate time and energy consumption of the main drying programmes.


Maximum Drying Weight	
Cottons	Max. capacity declared
Synthetics or Delicates	Max. 4 kg

Power consumption of off-mode: 0,40 W

Power consumption of left-on mode: 0,75 W

Information for Test Laboratory

EN 61121 - Programme To Use

- STANDARD DRY COTTON → 
- IRON DRY COTTON (WHITES - Ready to Iron)
- EASY-CARE TEXTILE (SYNTHETICS - Dry Hanger)



WARNING

Clean the filters before every cycle.

21



WARNING





















The real duration of drying cycle depends by the starting humidity level of the laundry due to spin speed, type and amount of load, cleanliness of filters and ambient temperature.



WARNING

Only for 10/11 kg capacity Tumble Dryer supplied with drain hose kit: connect the drain hose for recovering the condenser water (according to instruction in the dedicated chapter).

Table of programmes

PROGRAMMES		Selectable Options					CAPACITY (kg)	DRYING TIME (min)
								
	ECO COTTON	✓	-	✓	-	-	Full	*
	WHITES	✓	✓	✓	✓	✓	Full	*
	JEANS	✓	-	✓	-	-	4	*
	DARKS & COLOURED	✓	-	✓	✓	✓	4	*
	SYNTHETICS	✓	✓	✓	✓	✓	4	*
	SHIRTS	✓	-	✓	✓	✓	2,5	*
	RAPID 30'/45'/59'	✓	✓	✓	-	-	2,5	*
All In One 	ALL IN ONE	✓	-	✓	-	-	6	*
	EXTRA HYGIENE	✓	-	✓	✓	✓	4	*
	ANTI ODOURS	✓	-	✓	-	-	2,5	20'
	WOOLMARK	✓	-	✓	-	-	1	70'
	DELICATES	✓	✓	✓	✓	✓	4	*
	ANTIALLERGY	✓	✓	✓	-	-	4	Max 220'
	XXL	✓	✓	✓	✓	✓	6	Max 220'
	REMOTE CONTROL (Wi-Fi) Position that you have to select when you want to enable remote control through the App (via Wi-Fi).							

* The real duration of drying cycle depends by the starting humidity level of the laundry due to spin speed, type and amount of load, cleanliness of filters and ambient temperature.

Description of programmes

To dry different types of fabrics and colors, the tumble dryer has specific programs to meet every need of drying (see table of programmes).

REMOTE CONTROL (WI-FI)

Position that you have to select when you want to enable/disable remote control through the App, via Wi-Fi. In this case, the start of cycle will take place through the App commands. More details in the **REMOTE CONTROL (Wi-Fi)** section.

ECO COTTON

The cotton program (hang dry) is the most efficient program in energy consumption. Suitable for cottons and linens.

WHITES

The right cycle to dry cottons, sponges and towels.

JEANS

Dedicated to dry uniformly fabrics like jeans or denim. It's recommended flip over the garments before drying.

DARKS & COLOURED

A delicate and specific cycle to dry dark and coloured cotton or synthetics garments.

SYNTHETICS

To dry synthetic fabrics that need an accurate and specific treatment.

SHIRTS

This specific cycle has been conceived to dry shirts minimizing tangles and folds thanks specific movements of the drum. It's recommended to take out the linens immediately after drying cycle.

RAPID 30'/45'/59'

Quick cycles allow you to have items ready in a short time, you can choose to dry them in 30,45,59 minutes.

ALL IN ONE

A new innovative cycle to dry different kinds of fabrics in the same time. The dryer provides an alert when the lightweight fabrics are dry and ready to be taking out (on the display the text AIO blinks for

3 minutes and an acoustic sound is emitted). After this step it's necessary to press start again to complete the drying for the leftovers heavier linens.

EXTRA HYGIENE

Special program for extra hygiene needs that assure low levels of bacteria.

ANTI ODOURS

The perfect cycle to remove the smells from the linens smoothing creases.

WOOLMARK

Woolen clothes: the program can be used to dry up to 1 kg of laundry (around 3 jumpers). It is recommended to reverse all clothes before drying. Timing can change due to dimensions and thickness of load and to spinning chosen during washing. At the end of the cycle, clothes are ready to be worn, but if they are heavier, edges can be a bit wet: it is suggested to dry them naturally. It is recommended to unload clothes at the very end of the cycle.

Attention: felting process of wool is irreversible; please dry exclusively with symbol "ok tumble" on the garment label. This programme is not indicated for acrylic clothes.



APPAREL CARE

The wool drying cycle of this machine has been approved by the Woolmark Company for the drying of machine washable wool products provided that the products are washed and dried according to the instructions on the garment label and those issues by the manufacturer of this machine M1530.

In UK, Eire, Hong Kong and India the Woolmark trade mark is a Certification trade mark.

DELICATES

To dry delicate fabrics that need an accurate and specific treatment.

ANTIALLERGY

One specific cycle that dries and in the same time helps to reduce the main allergens as dust mites, pet hair, pollens and residual of powder detergents.

XXL

Specific cycle dedicated to dry large linens e.g. curtains sheets and tableclothes. Thanks to a specific movement of the drum the linens will be dry minimizing tangles and folds.

9. TROUBLESHOOTING AND WARRANTY

What might be the cause of...

Defects you can remedy yourself

Before calling Service for technical advice please run through the following checklist. A charge will be made if the machine is found to be working or has been installed incorrectly or used incorrectly. If the problem persists after completing the recommended checks, please call Service, they may be able to assist you over the telephone.

Time display to end could change during drying cycle. The time to end is continuously checked during the drying cycle and the time is adjusted to give the best estimation time. The displayed time may increase or decrease during the cycle and this is normal.

Drying time is too long/clothes are not dry enough...

- Have you selected the correct drying time/programme?
- Were the clothes too wet? Were the clothes thoroughly wrung or spindried?
- Do the filters need cleaning?
- Does the heat exchanger need cleaning?
- Is the dryer overloaded?

The dryer does not operate...

- Is there a working electricity supply to the dryer? Check using another appliance such as a table lamp.
- Is the plug properly connected to the mains supply?
- Is there a power failure?
- Has the fuse blown?
- Is the door fully closed?
- Is the dryer switched on, both at the mains supply and at the machine?

- Has the drying time or the programme been selected?
- Has the machine been switched on again after opening the door?

The dryer is noisy...

- Switch off the dryer and contact Service for advice.

The filters cleaning indicator light is on...

- Do the filters or the heat exchanger need cleaning?

The water container indicator light is on...

- Does the water container need emptying?

Customer Service

Should there still be a problem with your dryer after completing all the recommended checks, please call Service for advice. They may be able to assist you over the telephone or arrange for a suitable appointment for an engineer to call under the terms of your guarantee. However, a charge may be made if any of the following applies to your machine:

- Is found to be in working order.
- Has not been installed in accordance with the installation instructions.
- Has been used incorrectly.

Spares

Always use genuine spares, available direct from Service.

Service


To ensure the continued safe and efficient operation of this appliance we recommend that any servicing or repairs are only carried out by an Authorised Service engineer.

Warranty

The product is guaranteed under the terms and conditions stated on the certificate included with the product. The certificate has to be stored so as to be shown to the Authorized Customer Service Centre in case of need. You can also check the warranty conditions on our web site. To obtain assistance, please fill in the form on-line or contact us at the number indicated on the support page of our web site.

RADIO EQUIPMENT INFORMATION

Technology	Wi-Fi	BLE
Standard	IEEE 802.11b/g/n	Bluetooth v4.2, BR/EDR, BLE
Frequency Band(s) [MHz]	2401÷2483	2402÷2480
Maximum Power [mW]	100	10

By placing the  mark on this product, we are confirming compliance to all relevant European safety, health and environmental requirements which are applicable in legislation for this product.

Hereby, Candy Hoover Group Srl declares that the radio equipment is in compliance with Directive 2014/53/EU. The full text of the EU declaration of conformity is available at the following internet address: www.candy-group.com

To ensure safety when disposing of an old tumble dryer disconnect the mains plug from the socket, cut the mains power cable and destroy this together with the plug. To prevent children shutting themselves in the machine break the door hinges or the door lock.

The manufacturer declines all responsibility for any printing errors in the booklet included with this product. Moreover, it also reserves the right to make any changes deemed useful to its products without changing their essential characteristics.

Energy



Capacity



Time



		Capacity (kg)		7	8	9	10
		Class		A++	A++	A++	A++
☀ Whites	Energy	kWh		2,15	2,41	2,70	3,04
	Time	Min.		253	281	325	350
☒ Whites	Energy	kWh		1,89	2,12	2,38	2,67
	Time	Min.		222	248	286	308
☐ Cotton	Energy	kWh		1,72	1,93	2,16	2,43
	Temps	Min.		202	225	260	280
☐ Cotton ½	Energy	kWh		0,97	1,08	1,16	1,21
	Time	Min.		118	135	149	153
☁ Whites	Energy	kWh		1,38	1,54	1,73	1,94
	Time	Min.		162	180	208	224