

BUSH *Classic*

Instruction manual

CTT61





You'll soon be enjoying your new Turntable.

It all begins here, with your instructions. Don't worry, there's nothing too technical coming up. Just simple, step-by-step guidance to get you up and running quickly. Sound good? Then let's get started.

Help and Guidance

We're here to help you get the most from your Turntable. Should you require any guidance, a simple solution can often be found online at:

www.argos-support.co.uk

If you still require further assistance, call one of our experts on **0345 600 3021**.

If you require any technical guidance or find that your product is not operating as intended, a simple solution can often be found in the **Troubleshooting**

Contents

1 Safety information

Safety information	6
--------------------	---

2 Getting to know your Turntable

Ready? Let's begin	10
Accessories	10
Features	11
Fitting the legs	13
Fitting the rubber pads for tabletop usage	13
Connecting to an external sound system	14
Listening to an external source	15
Handling vinyl	15
Earphone usage	16

3 Using your Turntable

Getting started	18
Connecting the power	18
Turn the power On/Off	18
Play a record	19
Replacing the turntable stylus (needle)	20

4 Other information

Care & maintenance	22
Technical specification	22

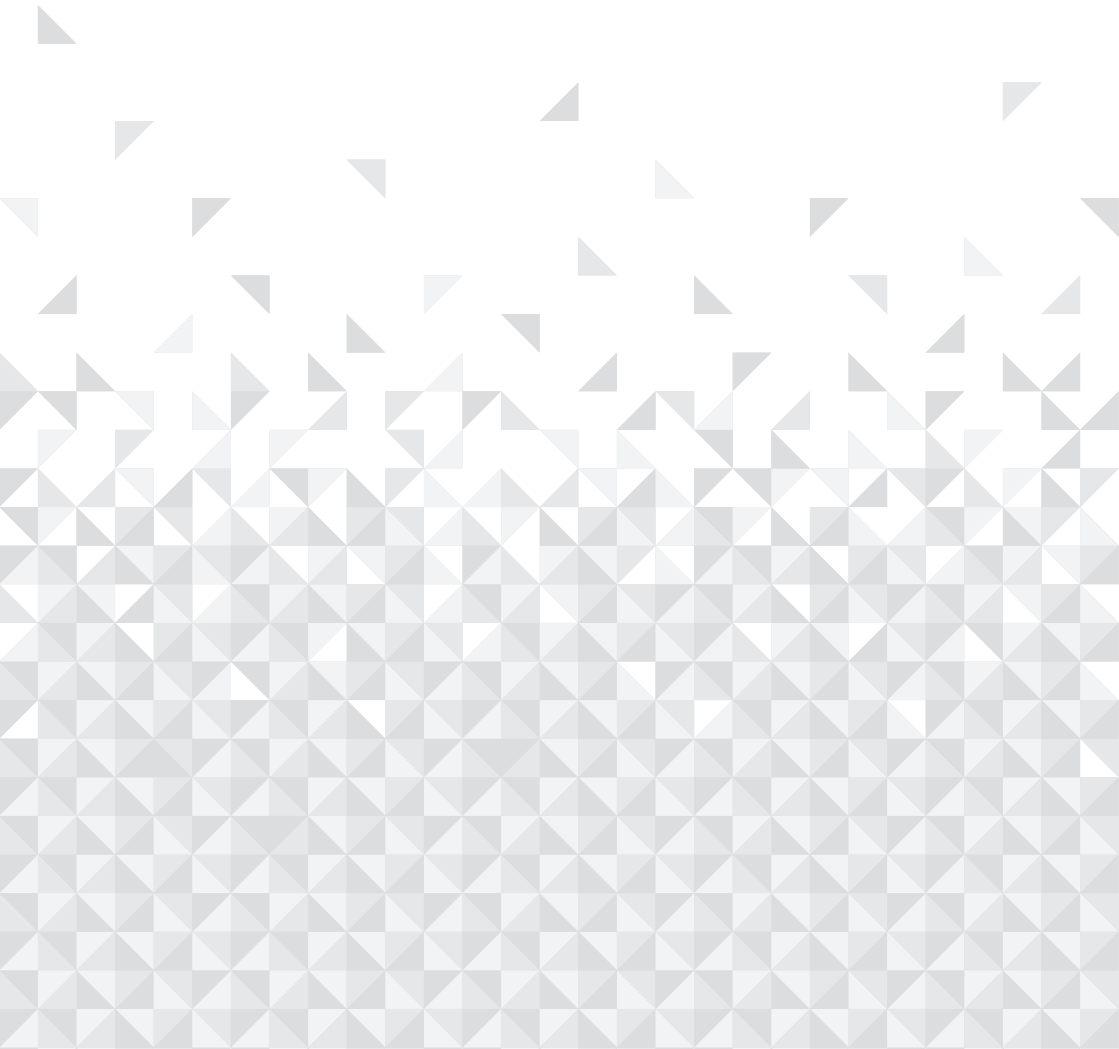
Contents

5 Product support

Troubleshooting	24
Disposal	25
Help and assistance	26
Guarantee	27

If you require any technical guidance or find that your product is not operating as intended, a simple solution can often be found in the **Troubleshooting**

Safety information 1





Safety information

Important - Please read these instructions fully before installing or operating

Power source



- This symbol means that this unit is double insulated. An earth connection is not required.
- The appliance must be connected to a 100-240 volt 50/60Hz AC supply by means of a three pin socket.
- Unplug this apparatus during lightning storms or when unused for long periods of time - to prevent damage to this product.



- Opening or removing covers may expose you to dangerous voltages or other hazards.



- To prevent risk of fire or electric shock, avoid overloading wall outlets, extension cords, or integral convenience receptacles.
- Use suitable power sources - Plug the product into a suitable power source, as described in the operating instructions or as marked on the product.
- The supply voltage should be the same as that indicated in the technical specifications and the appliance rating plate.
- If the socket outlets in your home are not suitable for the plug supplied with this unit check with a qualified electrician for replacement.
- In order to disconnect the apparatus from the mains completely, switch off the outlet and remove the mains plug completely.



- Do not bend, stretch or pull the supply cable in order to avoid electric shock.
- When installed, the power socket must be within easy reach.

Moisture and water

- Do not use this apparatus near water or moisture.
- Do not use this product near a bathtub, wash-bowl, kitchen sink, and laundry tub, in a wet basement, near a swimming pool, or anywhere else that water or moisture is present.

If you require any technical guidance or find that your product is not operating as intended, a simple solution can often be found in the **Troubleshooting**



Safety information

Important - Please read these instructions fully before installing or operating

Heat sources and flames

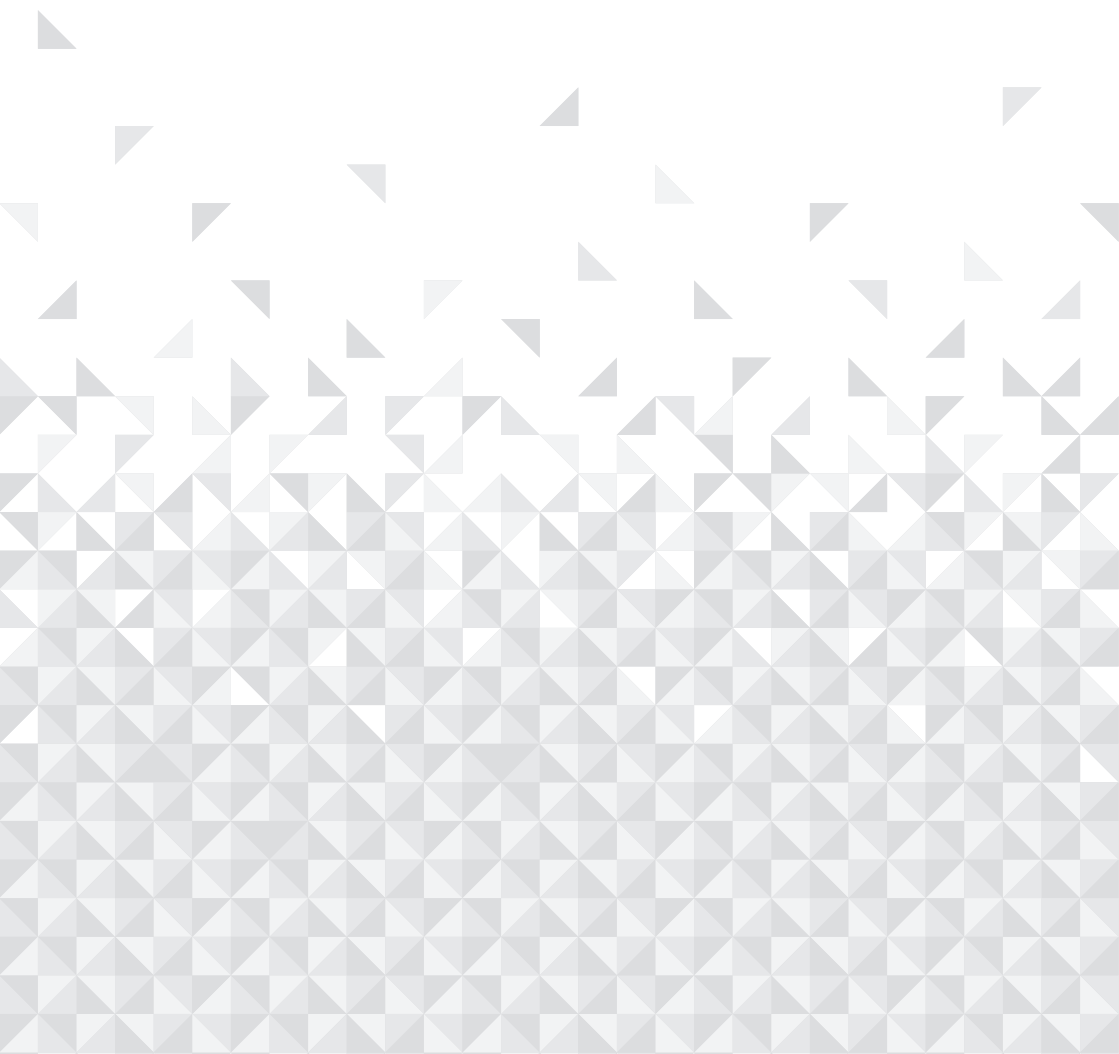


- To prevent risk of fire or electric shock, avoid overloading wall outlets, extension cords, or integral convenience receptacles.

Servicing and repairs

- Refer all servicing to qualified service personnel
- Servicing is required when the apparatus has been damaged in any way: such as liquid has been spilled or objects have fallen into the apparatus; the apparatus has been exposed to rain or moisture, does not operate normally, or has been dropped

Getting to know your Turntable 2



Getting to know your Turntable

You'll be up and running in no time

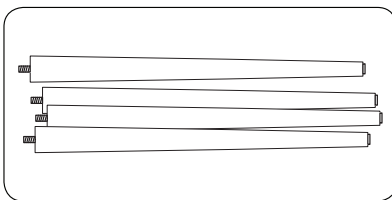
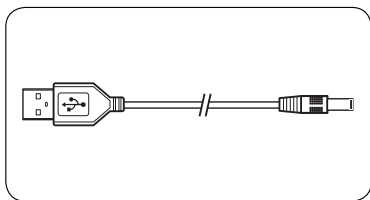
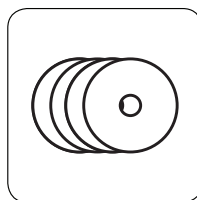
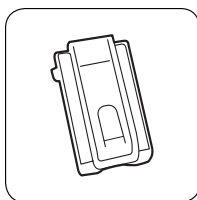
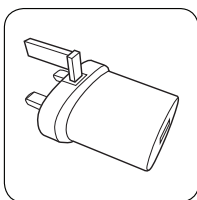
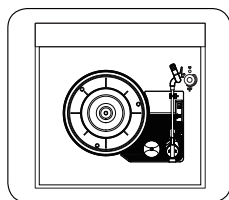
Ready? Let's begin...

Please read these instructions carefully. They contain important information which will help you get the best from your product and ensure safe and correct installation and operation.

If you require any further assistance, our technical experts are happy to help. For full details, refer to the product support section at the end of these instructions.

Accessories

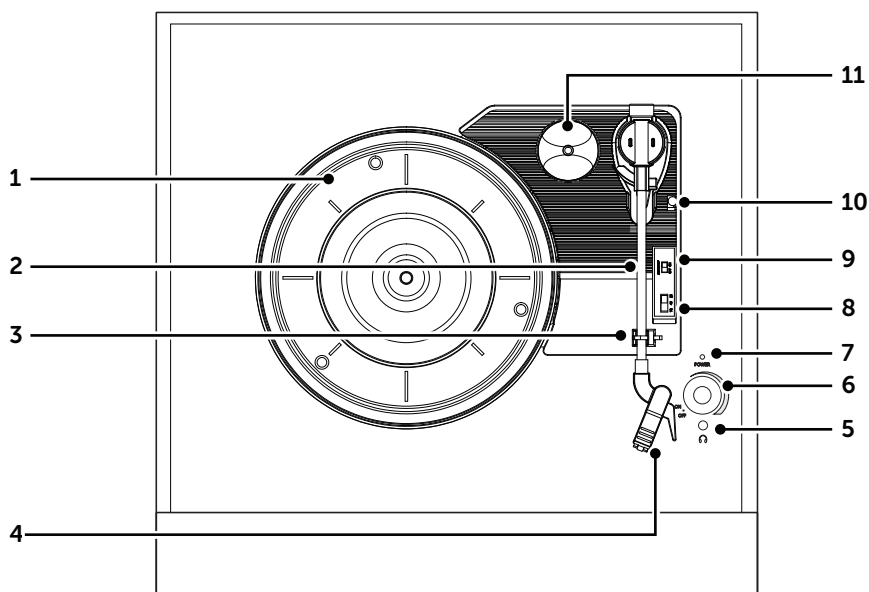
1. CTT61 turntable
2. Mains adapter
3. 1 x spare stylus/needle
4. 4 x Rubber pads
5. USB cable
6. 4 x legs



If you require any technical guidance or find that your product is not operating as intended, a simple solution can often be found in the **Troubleshooting**

Getting to know your Turntable

You'll be up and running in no time

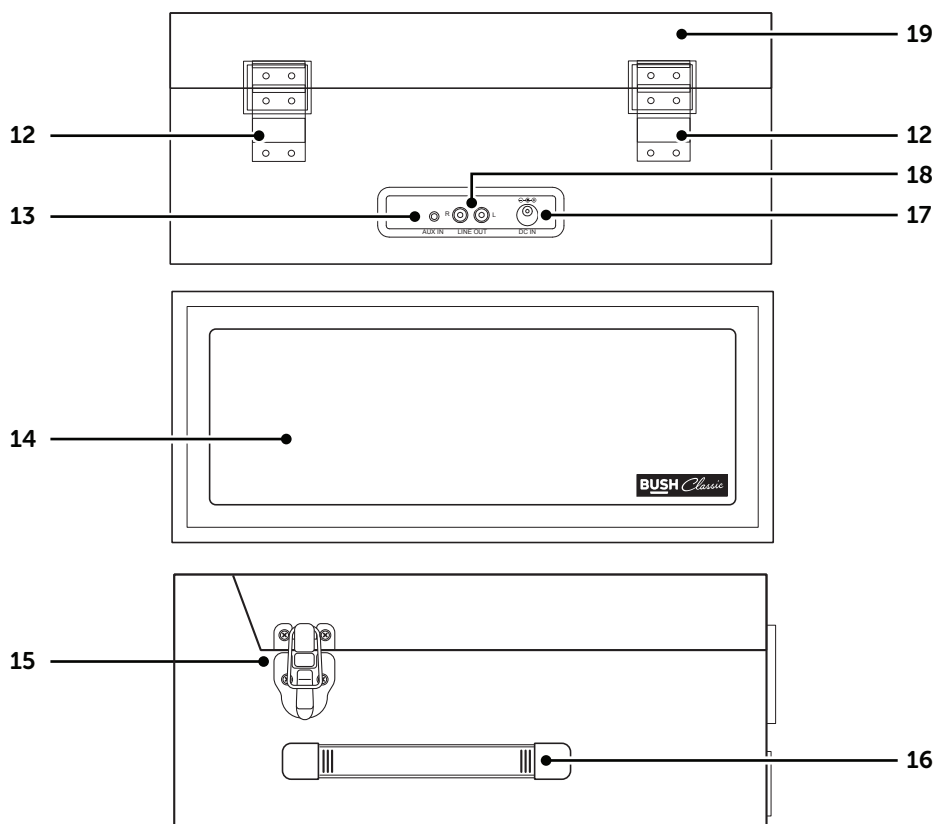


- | | |
|-------------------------------|------------------------------------|
| 1. TURNTABLE platter | 7. POWER LED |
| 2. TONE-ARM | 8. SPEED selector (33, 45 & 78rpm) |
| 3. TONE-ARM rest/lock | 9. AUTO STOP On/Off switch |
| 4. CARTRIDGE/STYLUS | 10. TONE-ARM - lift lever |
| 5. EARPHONE socket | 11. 45 RPM adapter |
| 6. ON/OFF/Volume control knob | |

section of these instructions, or online at www.argos-support.co.uk If you still require further assistance, call one of our experts on 0345 600 3021.

Getting to know your Turntable

You'll be up and running in no time



12. HINGES

13. AUX-IN 3.5mm socket

14. INTERNAL speakers

15. LOCK mechanism

16. CARRY HANDLE

17. DC MAINS input socket

18. RCA LINE LEVEL output sockets

19. DUST cover

If you require any technical guidance or find that your product is not operating as intended, a simple solution can often be found in the **Troubleshooting**

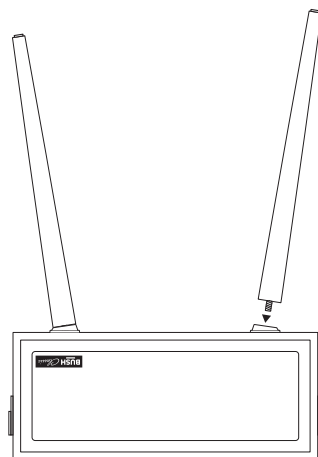
Getting to know your Turntable

You'll be up and running in no time

Fitting the legs

Follow the below instructions to install the legs.

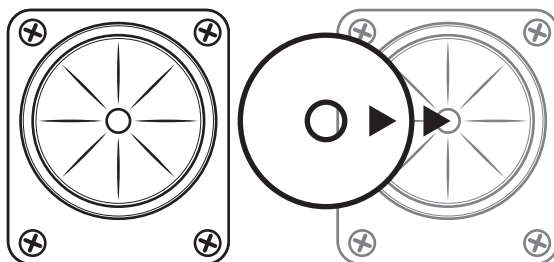
1. Ensure the tone-arm lock is engaged and holding the tone-arm. Lock the dust cover shut with both locking mechanisms.
2. Turn the unit upside down and place on a firm surface.
3. Screw each leg into one of the mounting plates **taking care not to over tighten and noting they are angled**.
4. Turn the unit back over and position the turntable on a steady surface away from direct sunlight and heat sources.



Fitting the rubber pads for tabletop usage

If you decide not to use the legs and prefer to place the turntable on a flat surface, we have supplied 4 x rubber pads to place over the mounting plates for stability and surface protection.

- Place each pad over the metal mounting plates as shown.

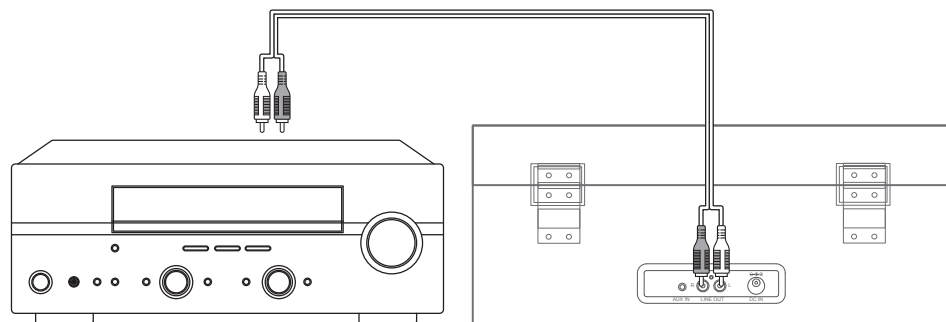


Getting to know your Turntable

You'll be up and running in no time

Connecting to an external sound system

Should you wish to connect the turntable to an external amplifier follow the below steps.



1. Connect an RCA audio cable (not supplied) to the AUDIO LINE OUT sockets on the rear of the turntable.

Take care to match the RED/WHITE plugs to the corresponding RED/WHITE sockets.

2. Connect the other end of the cable to an AUDIO INPUT on the amplifier (check your amplifier user manual if you are not sure).
3. The volume control on the turntable will have no effect on the volume level when connected this way. All volume controls should be operated from the amplifier.

Turn the volume on the turntable all the way down, so it does not interfere with the external sound system.

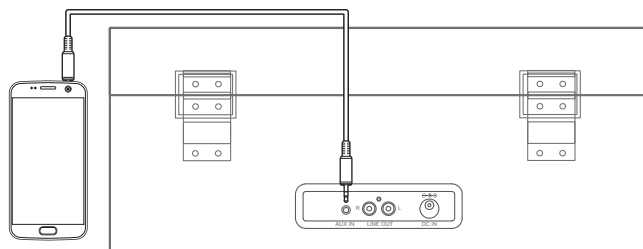
If you require any technical guidance or find that your product is not operating as intended, a simple solution can often be found in the **Troubleshooting**

Getting to know your Turntable

You'll be up and running in no time

Listening to an external source

Connect other audio sources such as a smartphone to the turntable to allow playback through the built-in speakers. Follow the below steps to get connected.



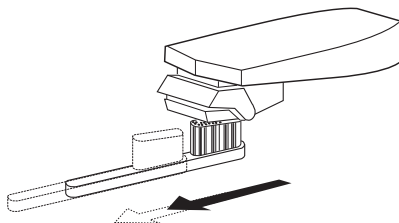
1. Connect a 3.5mm audio cable (not supplied) to the AUX IN socket on the rear of the turntable. The platter will stop spinning if playing a record.
2. Connect the other end to the earphone/Line out socket on the smartphone.
3. Begin playback on the smartphone.
4. Adjust the volume.
5. When connecting via the headphone output the volume of the built-in speakers is affected by the volume control on the smartphone. Ensure that the smartphone volume is set to about 70-80% to avoid distortion

Handling vinyl

Vinyl records can get dusty. This will cause a build-up of dust on the stylus during playback.

Keeping your vinyl collection clean and cleaning before use will reduce noisy crackles during playback and increase your listening experience.

Should you get a dust build-up on the stylus, gently dust off with a soft brush from back to front as shown.

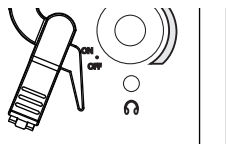


Getting to know your Turntable

You'll be up and running in no time

Earphone usage

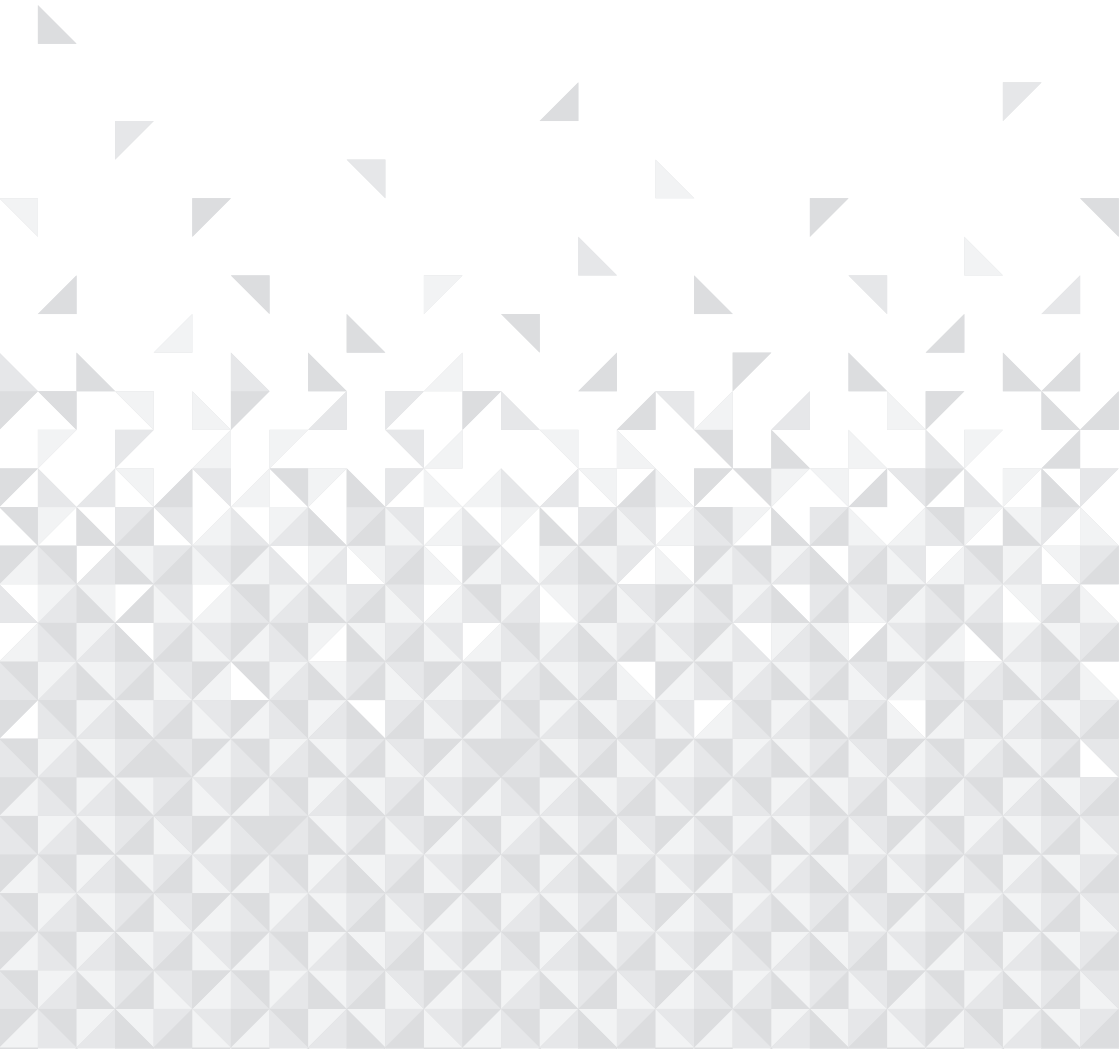
1. Connect earphones to the 3.5mm output on the top of the turntable (5).



- Listen at moderate volumes to avoid hearing damage.
- If you hear no sound during playing, do not turn up volume up as the music may suddenly begin at a high volume.
- Excessive sound pressure from earphones and headphones can cause hearing loss.
- To avoid damaging your ears, adjust the volume to the lowest safe level before playing, and turn up to the desired level when playback has started.

If you require any technical guidance or find that your product is not operating as intended, a simple solution can often be found in the **Troubleshooting**

Using your Turntable 3



Using your Turntable

Let's get started

Getting started

1. Remove all packaging from the turntable including the security wire around the tone-arm rest/lock (3) and the white plastic cartridge protector.
2. Place the turntable on a stable surface.

Connecting the power

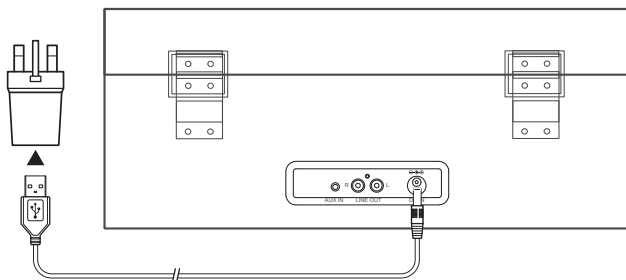


Fig 1.

1. Insert the USB plug end of the supplied cable into mains adapter socket. Then insert the other end into the DC mains input socket (17) on the rear of the turntable. **(Fig 1)**

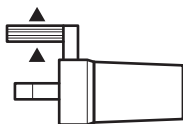


Fig 2.

2. Extend the central earth pin upwards on the adapter, then connect to a wall socket and switch on. **(Fig 2)**

Turn the power On/Off

1. Rotate the ON/OFF/Volume control knob (6) clockwise until you hear a click and the POWER LED (7) illuminates.
2. To power off the turntable rotate the ON/OFF/Volume control knob (6) anti-clockwise until you hear a click and the POWER LED goes off.

If you require any technical guidance or find that your product is not operating as intended, a simple solution can often be found in the **Troubleshooting**

Using your Turntable

Let's get started

Play a record

1. Before use, ensure the security wire (tone-arm rest/lock) and the cartridge protector (stylus/cartridge) have been removed. And the tone-arm lock is released.
2. Place a record on the turntable platter (1).
3. Select the speed required using the speed selector switch (8).
4. Raise the tone-arm (2) using the tone-arm lift lever (10). As you move the tone-arm towards the record the turntable begins spinning. Lower the needle gently onto the outer edge of the record using the tone-arm lift lever (10).
5. Rotate the ON/OFF/Volume control knob (6) to increase or decrease the volume level.

NOTE: When playing vinyl it is recommended to not close the dust cover

6. When the record has finished playing the platter will stop spinning when the AUTO STOP switch (9) is set to ON. If you require the platter to continue spinning further into the centre of a record, set the AUTO STOP switch (9) to OFF.
7. Raise the tone-arm (2) using the tone-arm lift lever (10), place on the tone-arm rest.

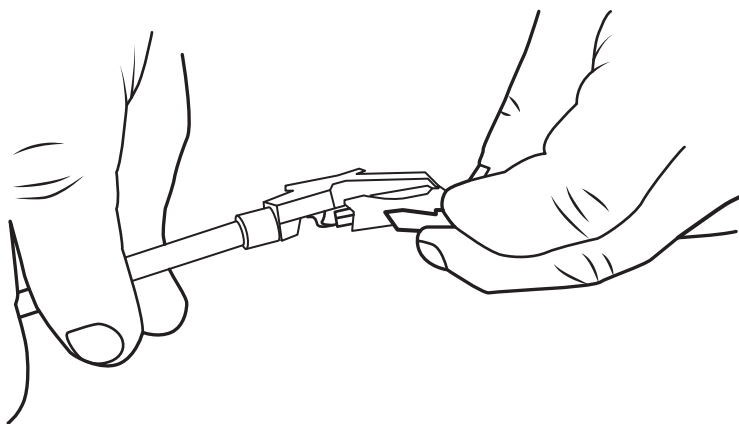
Using your Turntable

Let's get started

Replacing the turntable stylus/needle

NOTE Please replace the stylus/needle with extreme care to avoid damage to the tone-arm and cartridge.

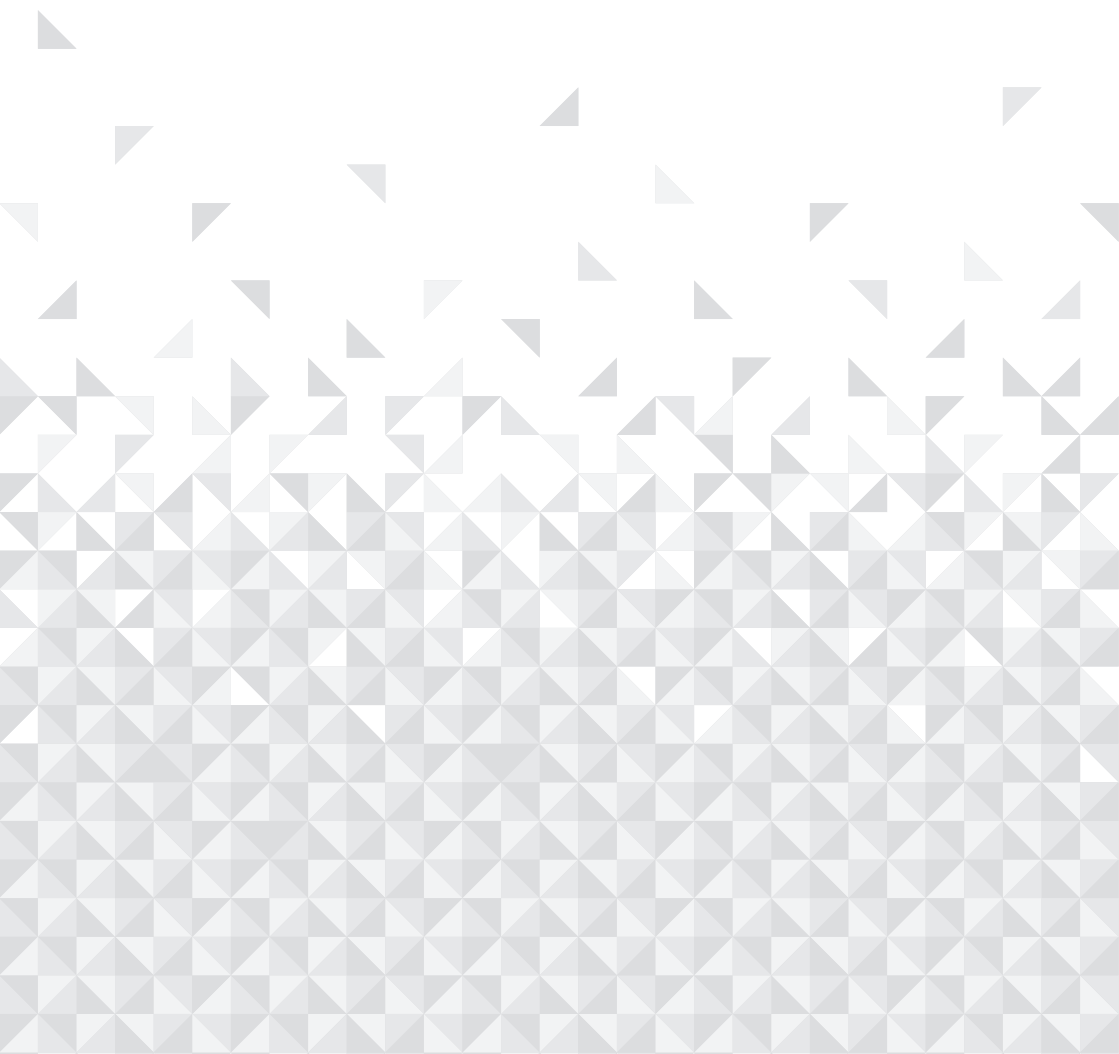
1. Carefully separate the red plastic section from the bottom of the cartridge.



2. Connect the new stylus/needle to the cartridge.

If you require any technical guidance or find that your product is not operating as intended, a simple solution can often be found in the **Troubleshooting**

Other information 4



Other information

Helpful technical information

Care & maintenance


After using the Turntable

- Set to Standby.
- Switch the unit off at the mains and unplug it if you are leaving it unattended for a long period (holidays etc).

Care & cleaning

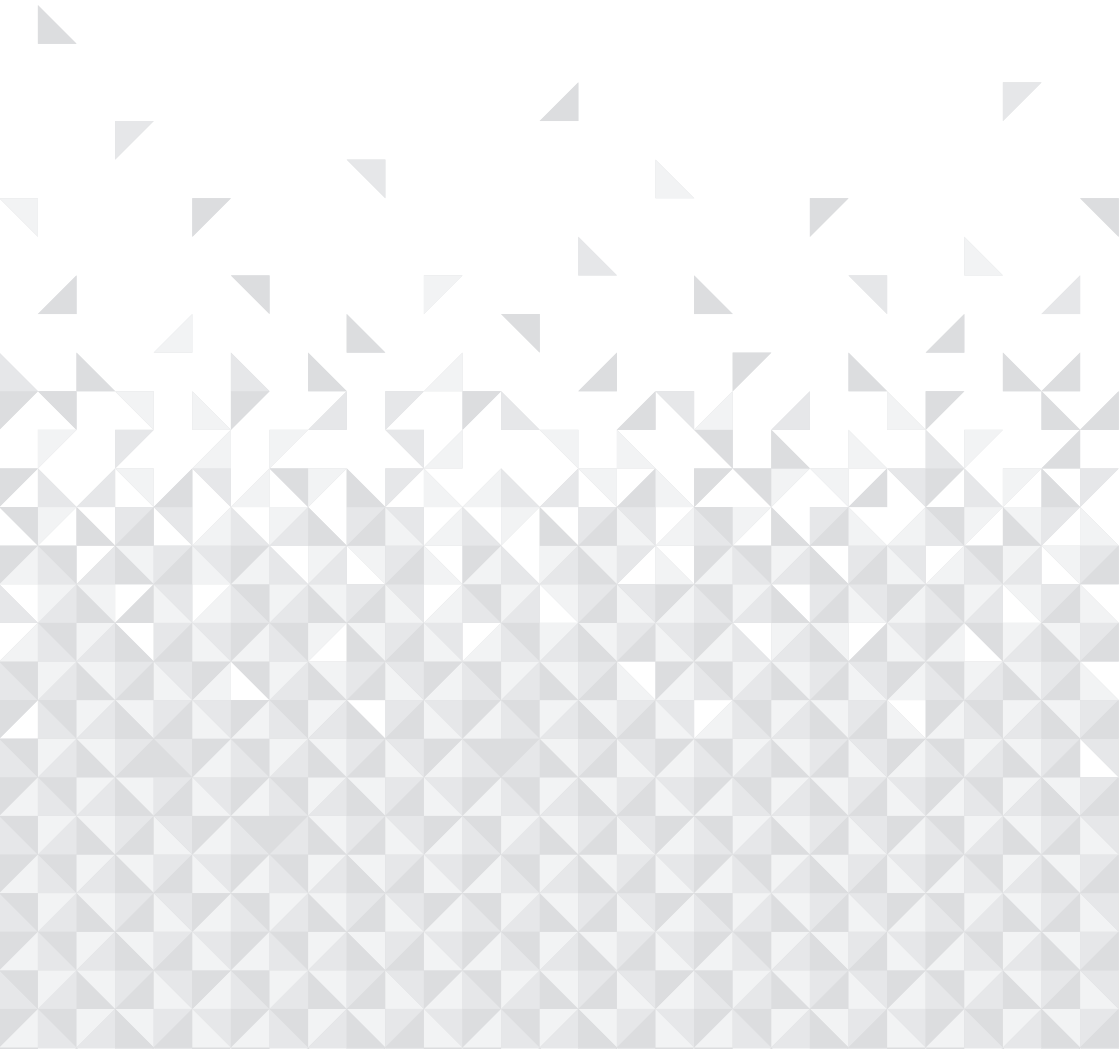
- All care and cleaning operations should be carried out with the unit unplugged from the mains power.
- Occasionally wipe the cabinet with a lint free duster. Never clean the unit with liquids or solvents.

Technical specification

Specification	Rating
Supply voltage	DC: 5V  1000mA
Max. power consumption	5W
Speaker power	5 MAX watts, 2 x 1.75w RMS @ 10% THD
Dimensions	(W) 420 x (D) 395 x (H) 170mm
Leg length	490mm

If you require any technical guidance or find that your product is not operating as intended, a simple solution can often be found in the **Troubleshooting**

Product support 5



Product support

Help is always at hand

Troubleshooting

Problem	Reason(s)	Solution(s)
No power.	Power cable not connected to wall socket.	Make sure the plug is connected.
	Power socket is not switched on.	Switch the power on.
No sound when connected to a home stereo system.	Volume is too low.	Increase the volume.
	3.5mm audio cable is connected to the AUX input socket.	Remove the cable to resume normal playback.
	AUX IN source volume is too low.	Increase the output volume of the AUX IN source.
The record will not play to the end.	The auto stop setting is set to the ON position.	Set the auto stop switch to the OFF position and raise the tone-arm manually when the record has finished.
The record is playing too fast or too slow.	Adjust the speed setting.	Change the speed selector to the correct position.

If you require any technical guidance or find that your product is not operating as intended, a simple solution can often be found in the **Troubleshooting**

Product support

Help is always at hand

Disposal



- Disposal of your old product. Your product is designed and manufactured with high quality materials and components, which can be recycled and reused
- When this crossed out wheeled bin symbol is attached to a product it means the product is covered by the European Directive 2002/96/EC.
- Please make yourself aware of the local collection system for electrical and electronic products.
- Please act according to your local rules and do not dispose of your old products with your normal household waste.
- The correct disposal of your old product will help prevent potential negative consequences for the environment and human health.



This appliance complies with the following EEC directives: 2014/35/EU Low voltage directive / 2014/30/EU EMC directive

Product support

Help is always at hand

Help and assistance

If you require any technical guidance or find that your Turntable is not operating as intended, a simple solution can often be found in the **Troubleshooting** section of these instructions or online at **www.argos-support.co.uk**

If you still require further assistance, call one of our experts on **0345 600 3021***. To help give us give you a fast and efficient service please have the following information ready:

Model Ref.	<input type="text" value="CTT61"/>	You can find these on the rating plate - a small information panel (usually a sticker or metal plate) on the rear of your product.
Serial number	<input type="text"/>	
Date of purchase	<input type="text"/>	This will be shown on your receipt

Local call rates applies*

Lines open 8am-7pm Monday to Saturday and 10am-4pm Sunday.

*Calls to Argos enquiry lines may attract a charge and set up fee from residential lines depending on your call plan/tariff. Mobile and other providers costs may vary, see www.bt.com/pricing for details.

For security and training purposes, telephone calls to and from customer service centres may be recorded and monitored. Calls from Republic of Ireland will attract international call charges.

If you require any technical guidance or find that your product is not operating as intended, a simple solution can often be found in the **Troubleshooting**

Product support

Help is always at hand



Call us now and activate your 12 month guarantee

Thank you for choosing Bush. Your new product is guaranteed against faults and breakdowns for 12 months. Don't forget to register it with us today so we can provide you with our best possible after-sales service and useful updates.

www.bushregistration.co.uk

FREEPHONE*

0800 597 8548

Lines are open 8am - 8pm, 365 days a year. *Calls may be recorded and monitored.

Your Bush Guarantee

This product is guaranteed for twelve months from the date of original purchase. Any defect that arises due to faulty materials or workmanship will be repaired free of charge (or if applicable the product will be replaced or the purchase price refunded) where possible during this period by the dealer from who your purchased the unit.

The guarantee is subject to the following provisions:

- The guarantee does not cover accidental damage, misuse, cabinet parts, knobs or consumable items.
- The product must be correctly installed and operated in accordance with the instructions contained in the manual.
- It must be used solely for domestic purposes. The guarantee will be rendered invalid if the product is re-sold or has been damaged by inexpert repair.
- Specifications are subject to change without notice.
- Bush disclaim any liability for loss or damage arising from the breakdown of the product.
- This guarantee is in addition to and does not diminish your statutory or legal rights.

Important Data Protection Information

If you provide us with information about another person, you confirm that they have appointed you to act for them, to consent to the processing of their personal data including sensitive personal data and that you have informed them of our identity and the purposes (as set out in the Important Data Privacy notice displayed overleaf) for which their personal data will be processed.

You are entitled to ask for a copy of the information we hold about you (for which we may charge a small fee) and to have any inaccuracies in your information corrected.

For quality control and training purposes, we may monitor or record your communications with us.

If your personal details change, if you change your mind about any of your marketing preferences or if you have any queries about how we use your information, please let us know by contacting our Data Protection **Officer, Domestic & General, Leicester House** 17 Leicester Street, Bedworth, Warwickshire CV12 8JP.

Guarantor: Argos Limited - 489 - 499 Avebury Blvd. - Milton Keynes - MK9 2NW

section of these instructions, or online at www.argos-support.co.uk If you still require further assistance, call one of our experts on 0345 600 3021.

BUSH *Classic*

Contact:

www.argos-support.co.uk

Helpline: 0345 600 3021

Rev 1.9