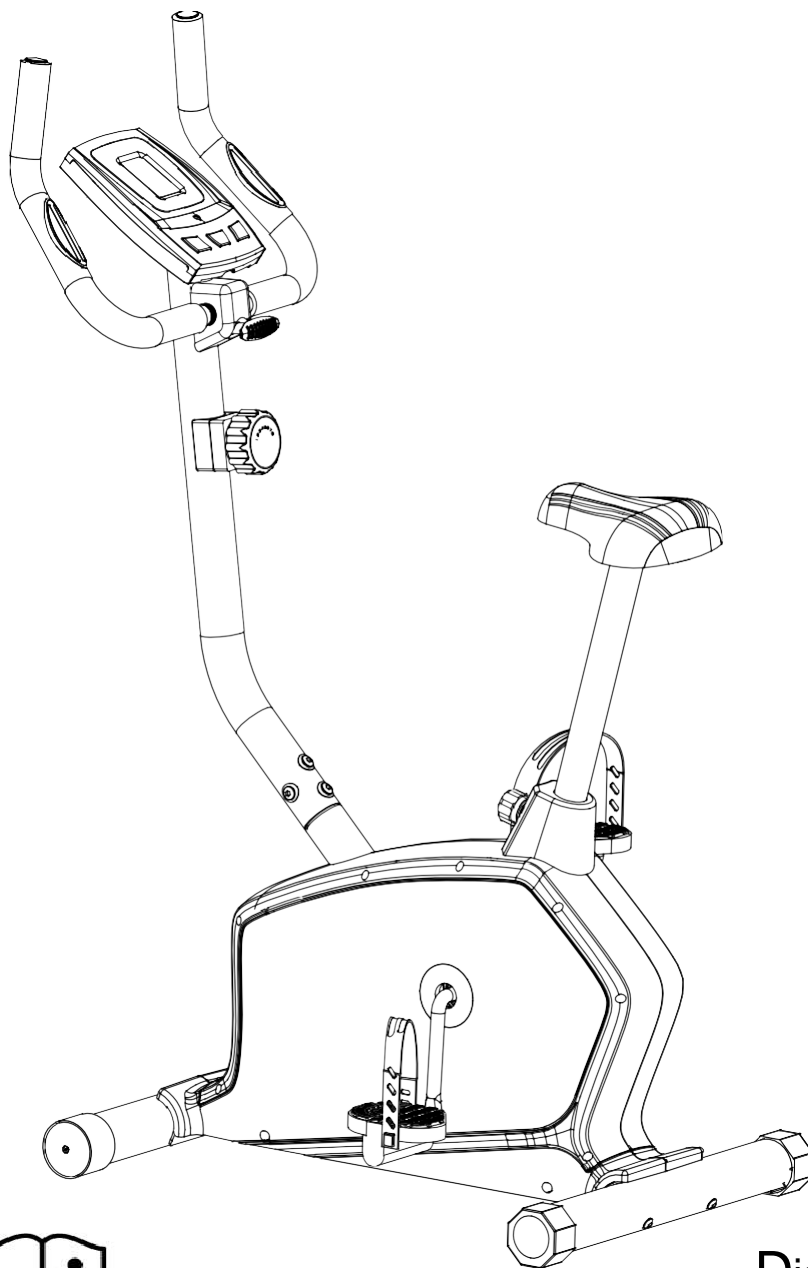




MARCY®

1201U UPRIGHT BIKE USER MANUAL

EN



Distributed By:
Pure-Tec Limited
www.puretecfitness.com

CONTENTS

Important Safety Information Weight Limit Capacities	3
Hardware Parts List	4
Pre Assembly Check List	5
Assembly Instructions	6 - 9
Computer Instructions	10-11
Exercise Instructions	12-13
Exploded Diagram	14
Parts List	15-16
Additional Information	17
Warranty Information	18

BEFORE YOU BEGIN

Thank you for selecting the MARCY 1201U Upright Bike. For your safety and benefit, read this manual carefully before using the equipment. As the official distributor for Marcy, we are committed to providing complete customer satisfaction. If you have any questions, or find there are missing or damaged parts, we guarantee you complete satisfaction through direct assistance. To avoid unnecessary delays, please contact our Customer Solutions Department, Monday to Friday 8am – 5pm GMT.

Pure-Tec Limited
www.puretecfitness.com

Tel: +44 (0) 1482 212098
Email: service@puretecfitness.com
Monday - Friday 0800 - 1700GMT

IMPORTANT SAFETY INFORMATION

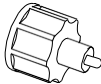

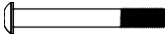
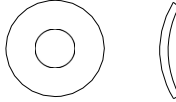
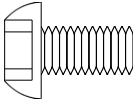
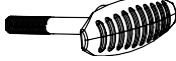


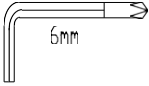
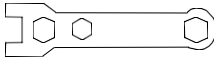
READ ALL INSTRUCTIONS BEFORE USING

THIS OWNER'S MANUAL CONTAINS ASSEMBLY, OPERATION, MAINTENANCE AND SAFETY INFORMATION. IN THE INTEREST OF SAFETY, PLEASE MAKE CERTAIN THAT YOU READ AND UNDERSTAND ALL THE INFORMATION BELOW.

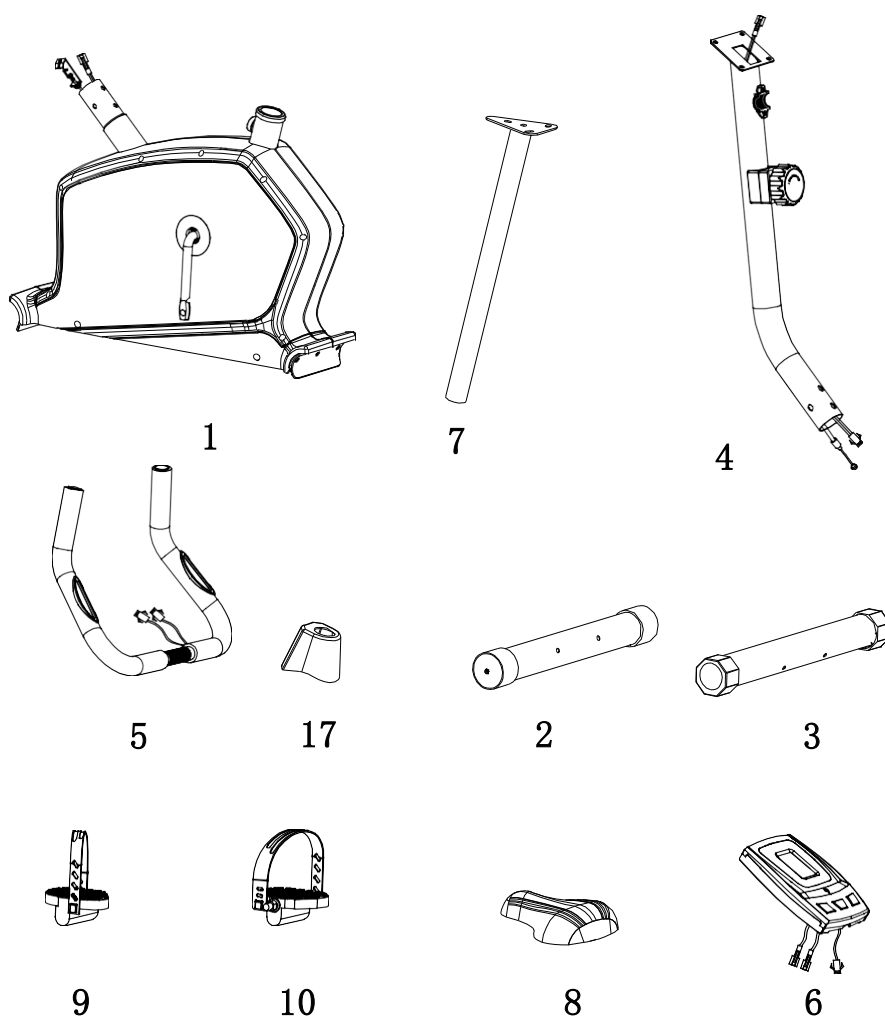
1. This Bike is intended for class H (H=Domestic) use only. It is not designed for commercial use.
2. This machine has been tested to EN 957.
3. Read the OWNER'S OPERATION MANUAL and all accompanying literature and follow it carefully before using your Bike.
4. Keep children and pets away from the Bike at all times. Do not leave children unattended in the same room with the Bike. The Bike is not a toy and therefore parents and guardians should be aware of the natural tendency for children to play, leading to situations and behaviour for which the Bike is not intended.
5. If children are allowed to use the Bike their physical/mental development and above all, temperament should be taken into account. Constant supervision is therefore needed.
6. Position the Bike on a clear levelled surface which is clear of all obstacles as not to restrict movement whilst exercising. DO NOT use the Bike near water or outdoors.
7. Exercise equipment has moving parts. In the interest of safety, keep others, especially children, at a safe distance while exercising.
8. Never hold your breath while exercising. Breathing should remain at a normal rate in conjunction with the level of exercise being performed.
9. Rest adequately between workouts. Muscle tone develops during these rest periods. Beginners should work out twice a week and increase gradually to 4 to 5 times per week.
10. Remove all jewellery, including rings, chains and pins before commencing exercise.
11. Always wear suitable clothing and footwear during exercise. Do not wear loose fitting clothing that could become entangled with the moving parts of your exercise machine.

IMPORTANT!!! THE MAXIMUM RECOMMENDED WEIGHT CAPACITY FOR YOUR BIKE IS 110KGS.

HARDWARE PACKING LIST

NO.	DESCRIPTION	DRAWING	QTY
11	Quick Release Lock Knob		1
13	Spring Washer		4
15	Allen Bolt M8*75		4
16	Curved Washer $\Phi 20^* \Phi 8$		8
18	Allen Bolt M8*16		4
21	T-shaped Lock Knob		1
37	Decorative Cover		1
19	Bushing		1
	Allen key L6		1
	Box Wrench		1

PRE-ASSEMBLY CHECK LIST



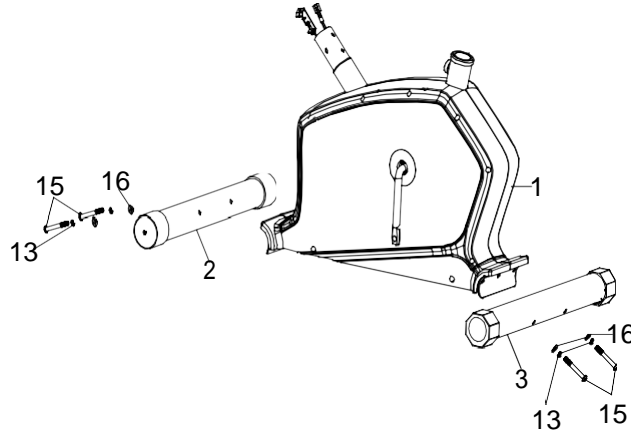
PART NO.	DESCRIPTION	Q'TY
1	Main frame	1
4	Front support	1
7	Seat support	1
6	Meter	1
9/10	Pedal (L/R)	1/1
17	Front support cover	1
8	Seat	1
5	Handlebar	1
2	Front stabilizer	1
3	Rear stabilizer	1

ASSEMBLY INSTRUCTION

STEP 1

Attach the front stabilizer (2) to the main frame (1), Secure using two curved washer (16), two Spring Washer (13) and Allen Bolt (15).

Attach the rear stabilizer (3) to the main frame (1), Secure using two curved washer (16), two Spring Washer (13) and Allen Bolt (15).

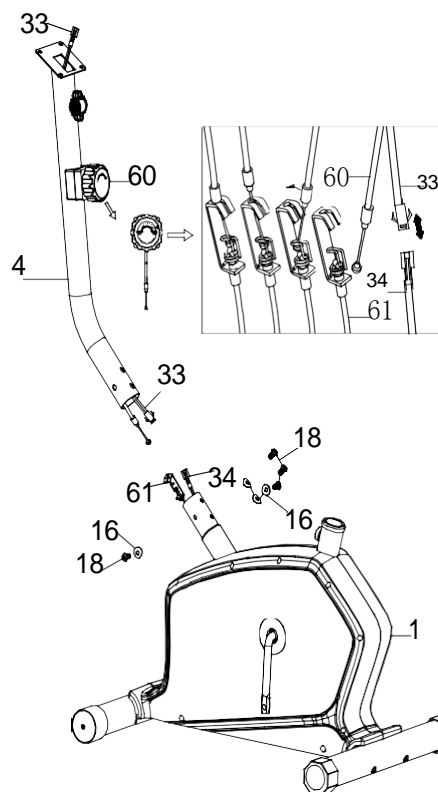


STEP 2

Connect the middle computer wire (33) with lower computer wire (34).

Turn the tension knob (60) to level 8 and connect the tension knob w/upper tension cable (60) to the extension with the lower tension cable (61).

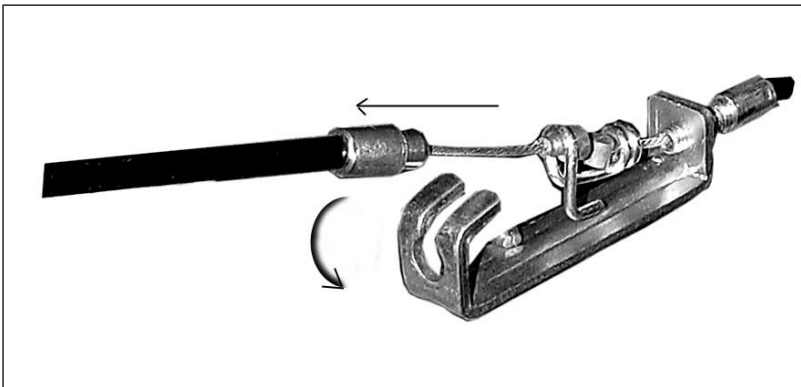
Insert the front post (04) into the main frame (1) and secure using four allen screws (18) and four curved washers (16).



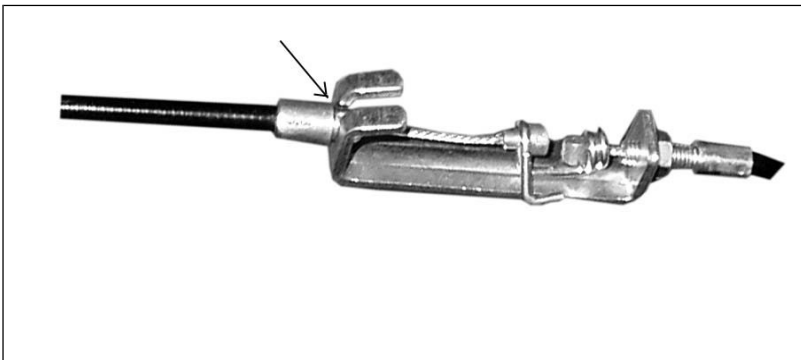
HOW TO CONNECT TENSION CONNECTOR



Slide the Cable wire from the extension sensor wire Connector in between the opening on the wire holder on sensor wire Connector.



Pull the extension sensor wire Connector backward and slide the wire through the slot on the bracket.



Drop down the Connector so the fitting sits firmly on top of the bracket.

NOTE: In able to hold the Front Post while connecting the cables and wires, extra help may be needed

STEP 3

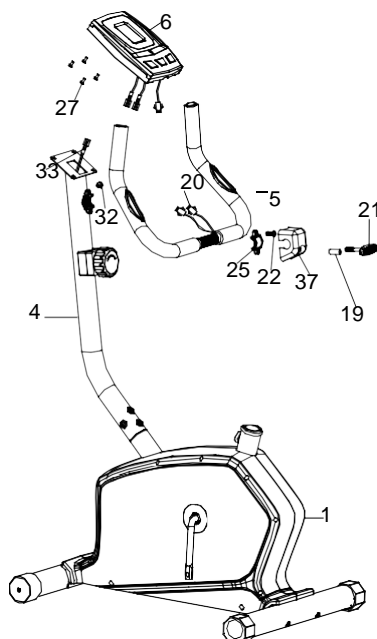
Attach the handlebar (05) to front of the front post (4), secure using one clip (25), one allen bolt (22), one cover for clamp (37), one bushing(19) and one T Type Knob (21).

Insert the lower pulse (20) through Grommet (32) on front post (04) and pull the hand pulse wire (20) out of front post (04).

Connect lower pulse wire (20) with hand pulse wire from computer (06).

Connect middle computer wire (33) to back of upper computer wire from computer (06).

Slide the computer (06) onto the front post. Secure four screw for computer (27).

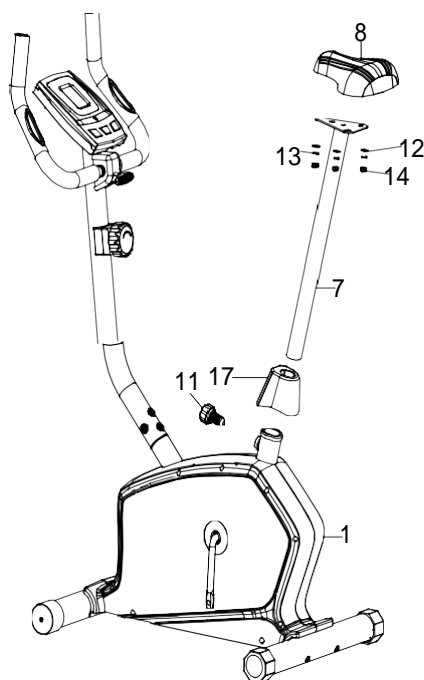


STEP 4

Attach the seat (08) to the seat post (07), Secure using three washers (12), three spring washers (13) and three nylon nuts (14) found under neath the seat.

Put the seat post (7) into the cover for seat post (17). Insert the seat post (7) into main frame(01), line up the holes and secure the seat in position with the quick release knob (11).

The correct height for the seat can be adjusted after the bike is fully assembled.

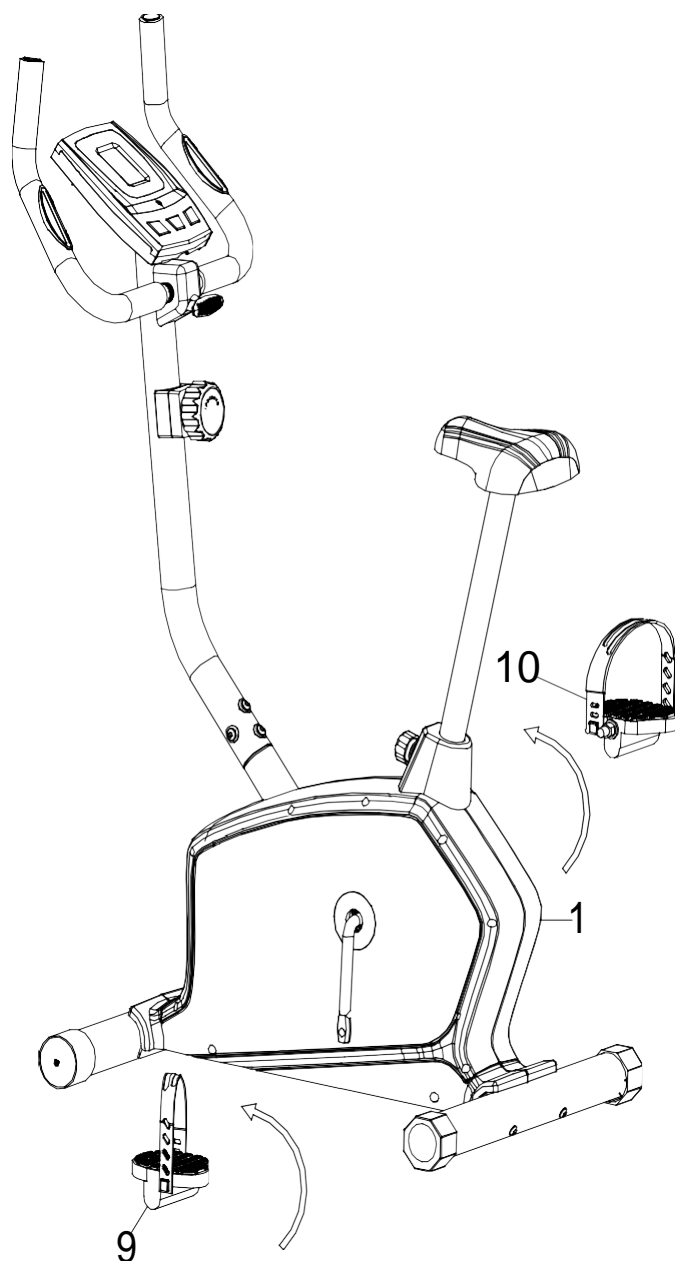


STEP 5

Attach the left and right pedal straps to the left and right pedals (9/10).

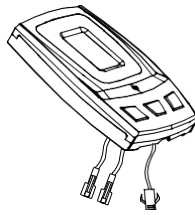
Attach the left and right pedals (9/10) to the left and right crank arms.

Note: The pedals and crank arms are marked with "R" and "L". The left pedal (L) should be threaded on clockwise and the right pedal (R) should be threaded on counter-clockwise.



**CHECK ALL BOLTS AND NUTS ARE TIGHTENED
BEFORE USING THE MACHINE**

COMPUTER INSTRUCTIONS



FUNCTIONAL BUTTONS:

MODE - Push down for selecting functions.

SET - To set the values of time、 distance、 calories and pulse when not in scan mode.

RESET - Push down for resetting time、 distance and calories.

FUNCTION AND OPERATIONS:

1.SCAN: Press “MODE” button until “SCAN” appears, monitor will rotate through all the 5 functions: Time、 speed、 distance、 calorie and pulse. Each display will be hold 4 seconds.

2.TIME: (1) Count the total time from exercise start to end. (2) Press “MODE” button until “TIME” appears, press “SET” button to set exercise time. When the “set” is zero, the computer will alarm 15 seconds.

3.SPEED: Display current speed.

4.DIST: (1) Count the distance from exercise start to end.

(2) Press “MODE” button until “DIST” appears. Press “SET” button to set exercise distance. When the “set” is zero, the computer will alarm 15 seconds.

5.CALORIES: (1) Count the total calories from exercise start to end.
(2) Press “MODE” button until “CAL” appears. Press “SET” button to set exercise calories. When the “set” is zero, the computer will alarm 15 seconds.

6. PULSE: Press MODE button until “PULSE” appears. Before measuring your pulse rate, please place your palms of your hands on Both of your contact pads and the monitor will show your current heart beat rate in beats per minute(BPM) on the LCD after 6~7 seconds. Remark: During the process of pulse measurement, because of the contact jamming, the measurement value may be higher than the virtual pulse rate during the first 2~3 seconds, then will return to normal level. The measurement value can not be regarded as the basis of medical treatment.

NOTE :

1. If the display is faint or shows no figures ,please replace the batteries.
2. The monitor will automatically shut off if there is no signal received after 4 minutes .
3. The monitor will be auto-powered on when starting to exercise push button w/signal in.
4. The monitor will automatically start calculating when you start to exercise and will stop calculating when you stop exercising for 4 seconds .

SPECIFICATIONS:

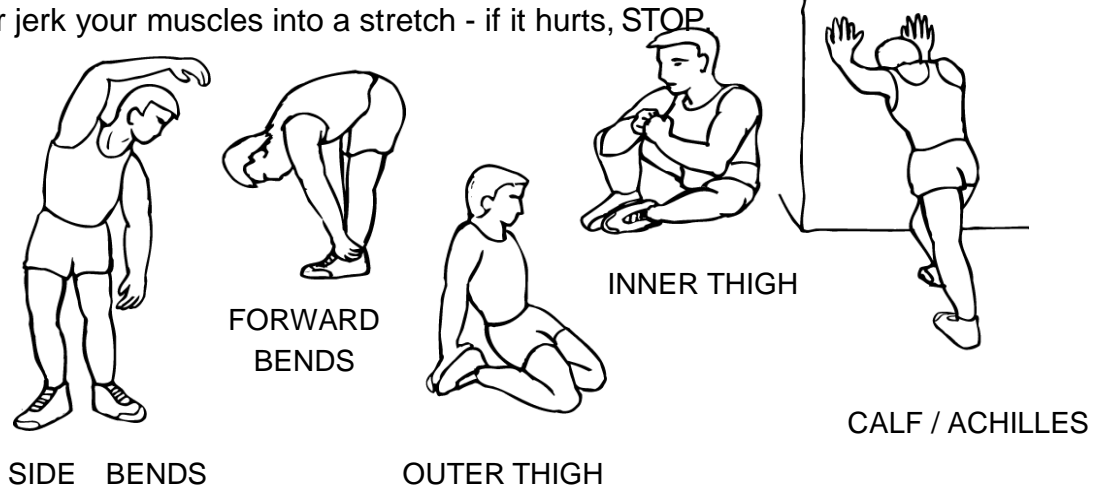
FUNCTION	AUTO SCAN	Every 4 seconds
	TIME	00:00'~99:59'
	CURRENT SPEED	The maximum signal can be pickup is 99.9KM/H
	TRIP DISTANCE	0.00~99.99KM or 0.00~9999KM
	CALORIES	0.1~999.9kCAL
	PULSE RATE	40~206BPM
BATTERY TYPE		2pcs of SIZE –AA or UM –3
OPERATING TEMPERATURE		0°C ~ +40°C
STORAGE TEMPERATURE		-10°C ~ +60°C

EXERCISE INSTRUCTIONS

Using your **UPRIGHT BIKE** will provide you with several benefits, it will improve your physical fitness, tone muscle and in conjunction with a calorie controlled diet help you lose weight.

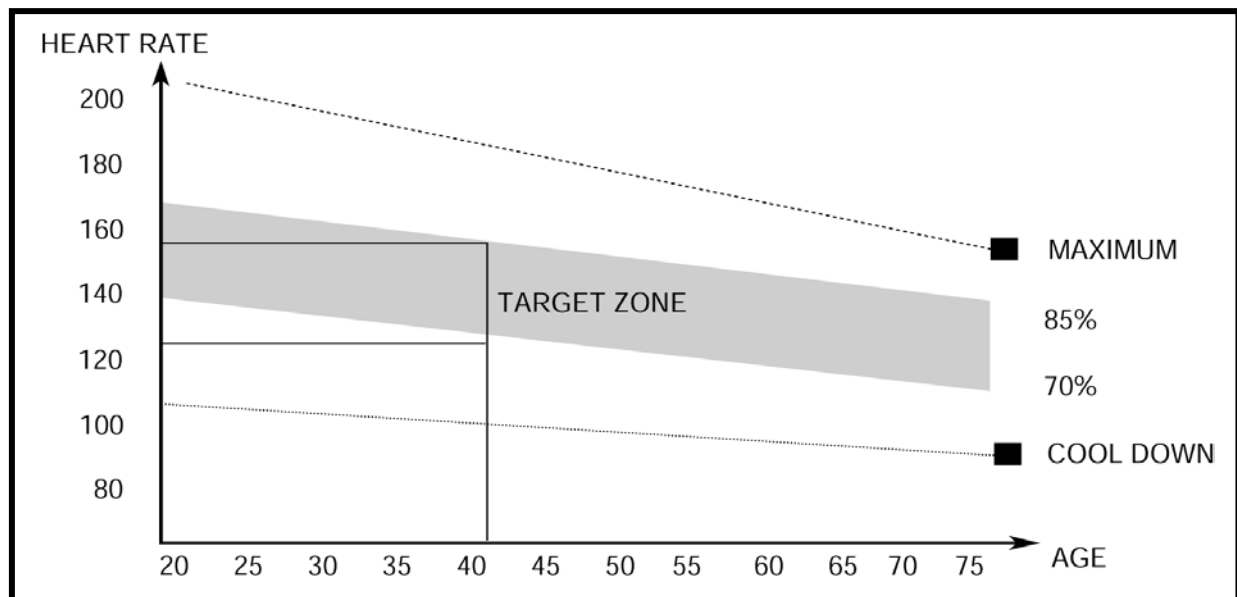
1. The Warm Up Phase

This stage helps get the blood flowing around the body and the muscles working properly. It will also reduce the risk of cramp and muscle injury. It is advisable to do a few stretching exercises as shown below. Each stretch should be held for approximately 30 seconds, do not force or jerk your muscles into a stretch - if it hurts, **STOP**



2. The Exercise Phase

This is the stage where you put the effort in. After regular use, the muscles in your legs will become more flexible. Work to your but it is very important to maintain a steady tempo throughout. The rate of work should be sufficient to raise your heart beat into the target zone shown on the graph below.



This stage should last for a minimum of 12 minutes though most people start at about 15-20 minutes

3. The Cool Down Phase

This stage is to let your Cardio-vascular System and muscles wind down. This is a repeat of the warm up exercise e.g. reduce your tempo, continue for approximately 5 minutes. The stretching exercises should now be repeated, again remembering not to force or jerk your muscles into the stretch.

As you get fitter you may need to train longer and harder. It is advisable to train at least three times a week, and if possible space your workouts evenly throughout the week.

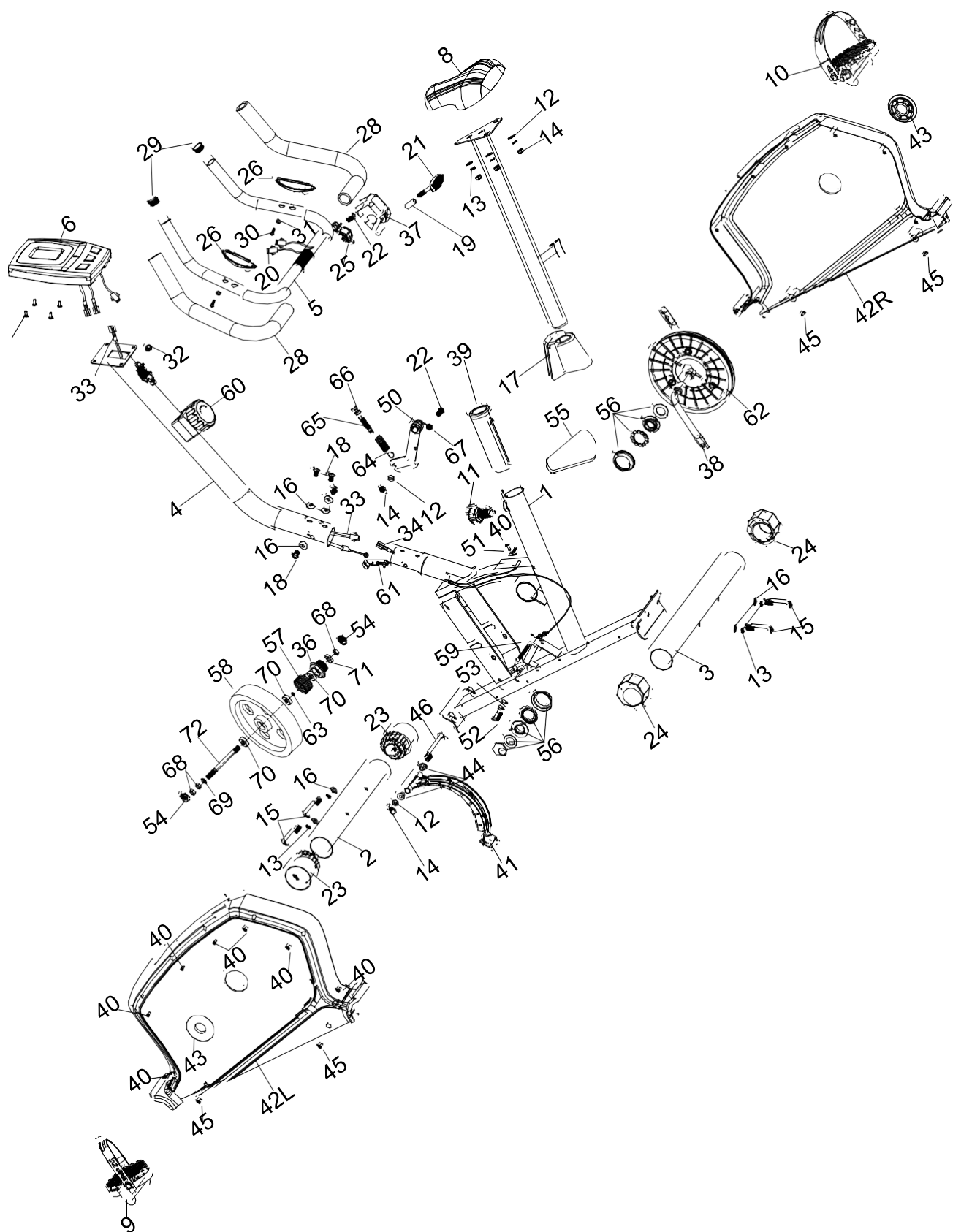
MUSCLE TONING

To tone muscle while on your **UPRIGHT BIKE** you will need to have the resistance set quite high. This will put more strain on our leg muscles and may mean you cannot train for as long as you would like. If you are also trying to improve your fitness you need to alter your training program. You should train as normal during the warm up and cool down phases, but towards the end of the exercise phase you should increase resistance making your legs work harder. You will have to reduce your speed to keep your heart rate in the target zone.

WEIGHT LOSS

The important factor here is the amount of effort you put in. The harder and longer you work the more calories you will burn. Effectively this is the same as if you were training to improve your fitness, the difference is the goal.

EXPLODED DIAGRAM



PARTS LIST

PART NO.	DESCRIPTION	Q'TY
1	Main frame	1
2	Front stabilizer	1
3	Rear stabilizer	1
4	Front post	1
5	Handlebar	1
6	Computer	1
7	Seat post	1
8	Seat	1
9	Pedal (Left)	1
10	Pedal (Right)	1
11	Quick release Knob	1
12	Washer $\Phi 8 \times \Phi 17$	5
13	Spring washer $\Phi 8$	7
14	Nylon Nut M8	5
15	Allen bolt M8*75	4
16	Curved washer $\Phi 8 \times \Phi 20$	8
17	Decorative cover	1
18	Allen bolt M8*16	4
19	Bushing	1
20	Lower pulse wire	2
21	T Type knob	1
22	Allen bolt M8*20	2
23	End cap for front stabilizer	2
24	End cap for rear stabilizer	2
25	Clip	1
26	Hand pulse sensor	2
27	Screw for computer M5*12	4
28	Foam grip	2
29	End cap for handlebar	2
30	Self tapping screw ST 4*20	2
31	Washer $\Phi 4.2 \times \Phi 12$	2
32	Grommet	1
33	Upper sensor wire	1
34	Lower sensor wire	1
36	Little belt pulley	1
37	Decorative cover	1
38	Crank	1
39	Bushing	1

PARTS LIST

PART NO.	DESCRIPTION	Q'TY
40	Self tapping screw ST 5*15	8
41	Magnet assembly	1
42	Chain cover (L/R)	1/1
43	Crank cover)	2
44	Powder bushing	2
45	Self tapping screw	4
46	Hex head bolt M8*105	1
50	Idler wheel	1
51	Sensor bracket	1
52	Hex head bolt M6*25	1
53	Hex head Nut M6	2
54	French Nut	2
55	Belt	1
56	BB parts	1 set
57	Spring clutch	1
58	Flywheel	1
59	Spring for magnet assembly	1
60	Tension knob w/Upper tension cable	1
61	Lower tension cable	1
62	Belt driver	1
63	Washer	1
64	Spring for belt	1
65	Bolt for belt adjustor	1
66	Nut M8	1
67	Spacer	1
68	Nut M8	3
69	Bowl shaped spacer	1
70	Bearing	3
71	Bearing	1
72	Axle	1

ADDITIONAL INFORMATION



Packaging Disposal

Government guidelines ask that we reduce the amount of waste material disposed of in land fill sites. We therefore ask that you dispose of all packaging waste responsibly at public recycling centres.

End of Life Disposal



We at Pure-Tec Limited hope you enjoy many years of enjoyable use from your Bike. However, a time will come when your Bike will come to the end of its useful life. Under '**European WEEE Legislation**' you are responsible for the appropriate disposal of your Bike to a recognised public collection facility.

CARE AND MAINTENANCE

1. Inspect and tighten all parts before using the Bike.
2. The Bike can be cleaned using a damp cloth and mild non-abrasive detergent. DO NOT use solvents.
3. Examine the Bike regularly for signs of damage or wear.
- 4. Failure to examine the Bike regularly may affect the safety level of the equipment.**
5. Replace any defective components immediately and/or keep the Bike out of use until repair.

LIMITED WARRANTY

Pure-Tec warrants this product to be free from defects in workmanship and material, under normal use and service conditions. Please refer to www.puretecfitness.com for warranty terms. This warranty extends only to the original purchaser and is valid for home use only. Pure-Tec's obligation under this Warranty is limited to replacing damaged or faulty parts at Pure-Tec's option.

All returns must be pre-authorised by Pure-Tec. This warranty does not extend to any product or damage to a product caused by or attributable to freight damage, abuse, misuse, improper or abnormal usage, purchasers own repairs or for products used for commercial or rental purposes. No other warranty beyond that specifically set forth above is authorised by Pure-Tec.

Pure-Tec is not responsible or liable for indirect, special or consequential damages arising out of or in connection with the use or performance of the product or other damages with respect to any economic loss, loss of property, loss of revenues or profits, loss of enjoyments or use, costs of removal, installation or other consequential damages or whatsoever natures.

The warranty extended hereunder is in lieu of any and all other warranties and any implied warranties of merchantability or fitness for a particular purpose is limited in its scope and duration to the terms set forth herein.

Your statutory rights are not affected.

ORDERING REPLACEMENT PARTS

Replacement parts can be ordered by contacting our Customer Solutions Department, Monday to Friday, 8am – 5pm GMT :

Pure-Tec Limited
www.puretecfitness.com

Tel: +44 (0) 1482 212098
Email: service@puretecfitness.com

Monday - Friday 0800 - 1700GMT

When ordering replacement parts, please give the following information,

1. Model
2. Description of Parts
3. Part Number
4. Date of Purchase

–