



Panasonic

DESIGN

SHAVE

TRIM

Shaving Trimmer

Beard Styling Book

AC/Rechargeable Shaving Trimmer

ER-GD60-s

- Easy to use I-shaped form
- Rounded blade edge shaves gently
- Washable blade
- Comb attachment for length adjustment
- Detail trimming attachment for detailed finishing
- Up to 50 minutes of cordless shaving
- Charge status lamp
- Cord / cordless operation
- Convenient travelling pouch



0.5 - 10 mm
Comb attachment



Detail trimming
attachment



3-Way Styling

1. DESIGN

SHARP LINES

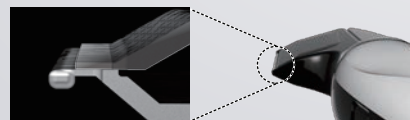
Making Edges with Sharp Cutting



The straight part of the blade is long, so it's easy to create straight, clear-cut lines.

2. SHAVE

Thin Fixed Blade



Newly developed ultrathin, sharp blade enables an extremely close shaving. You can cleanly shave whiskers on your cheeks or under your jaw with a single unit. And on busy mornings, you can enjoy a dry shave without the need for shaving foam.

DETAILING

Easy Detail Designing



Detail Trimming Attachment

Comes with a 10mm-wide Detail attachment enabling detailed beard design in places such as under the mouth.

3. TRIM

Even Beard Length



Comb Attachment
0.5~10mm

Using the attachment with the length adjustment function enables easy, clean trimming to a desired length.

Skin Protective Blade

Effectively captures whiskers while minimizing stimulation on the skin.

I-shaped Design

Newly developed I-shaped design offering easy, precise shaving with a fingertip touch.



Balbo with
Soul Patch



Hardline Chinstrap
Stubble



Maintenance for
Big Beard



Balbo with Soul Patch

A refined, masculine beard with straight lines on the cheeks providing an angled look. Careful, detailed shaping under the mouth is important. This style is recommended for men with thick beards.

1 Create Well-defined, Angled Lines

SHAVE

CHEEKS



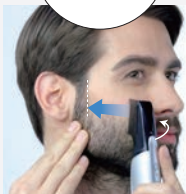
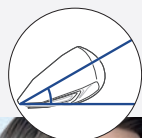
Shave unwanted hair to create two different straight, well-defined lines for an angular appearance.



Styling Tips

How to create well-defined lines

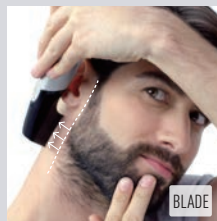
- Place the blade vertically where you want to make a line.
- Keep the blade upright and slide it over the area you want to shave to cut unwanted hair.
- Tilt the blade (see diagram), and shave back to the cut line for an even closer cut.



2 Create a Well-defined Line

SHAVE

SIDEBURNS/JAW



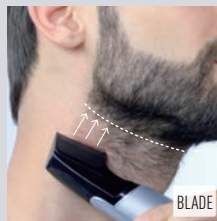
As shown in the photo, shave unwanted hair from in front of the ear to the bottom of the jaw to create a well-defined line.



3 Create a Clear Line

SHAVE

NECKLINE



Cleanly shave unwanted hair to create a neat, well-defined neckline.



- The trick to achieving a clean shave is to move the blade against the grain of the whiskers.

Styling Tips

Shave the line under two fingers placed where the neck and throat meet for a natural look. (As shown in the photo)



4 Trim to a Uniform Length

TRIM

SIDEBURNS/JAW

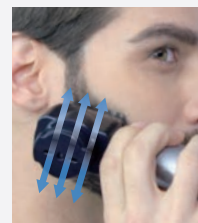


Trim entire beard to a length of 9 mm.



Styling Tips

Instead of trimming in one direction, it's better to trim in the opposite direction as well. This lets you cut to a uniform length without missing any long whiskers.



TRIM - Vertical

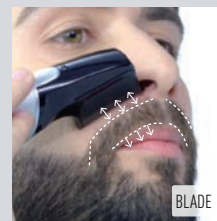


TRIM - Horizontal

5 Moustache Shaping

DESIGN

MOUSTACHE



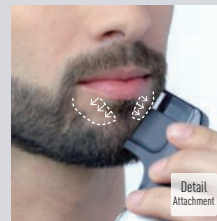
Make clean lines at the top of the moustache and above the lip.



6 Soul Patch Shaping

DESIGN

SOUL PATCH



Finish soul patch details with the Detail attachment.

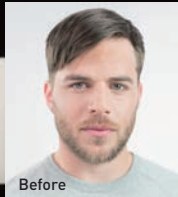


ER-GD60



Before





Before

ER-GD60



Hardline Chinstrap Stubble

A chinstrap features curved lines on the cheeks. Leaving the moustache as stubble without well-defined lines creates a rough look that's not overly styled. Fading where the sideburns meet the hair and beard provides a natural finish.

1 Create Curved Chinstrap Lines (Front)

DESIGN

CHEEKS



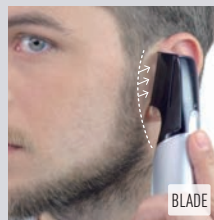
Shave unwanted hair to create curved, hard lines.



2 Create Well-defined Chinstrap Lines (Back)

SHAVE

SIDEBURNS/JAW



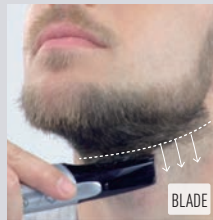
Create slightly curved, hard lines by shaving from the front of the ears to the jaw.



3 Shave under Chin/Neck

SHAVE

NECKLINE



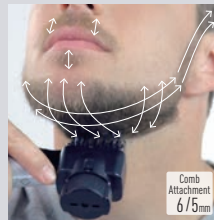
Shave unwanted hair up to a line (as shown in the photo) under the chin.



4 Trim and Fade Sideburns

TRIM

ENTIRE BEARD/SIDEBURNS



Trim entire beard to a length of 6 mm. Fade the areas where sideburns and chinstrap meet with the 5 mm length.



Fading Technique Tips



Fading where the sideburns meet the chinstrap and hair provides smooth gradation for a natural finish. When fading, pull the trimmer outwards when nearing the hair for good results.



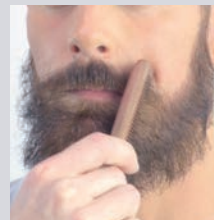
Maintenance for Big Beard

Big beards are becoming popular again. Try easy daily grooming to maintain a stylish, clean-looking appearance.

1 Untangle with a Comb

TRIM

ENTIRE BEARD



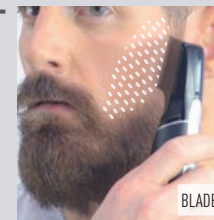
Untangle the beard so it's neat and tidy.



2 Shave Cheeks

SHAVE

CHEEKS



Cleanly shave unwanted hair on cheeks.



3 Shape the Moustache

DESIGN

MOUSTACHE



Shave clean lines at the top of the moustache.



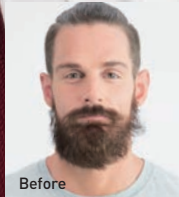
4 Shave under Chin/Neck

SHAVE

NECK/UNDER CHIN



Cleanly shave unwanted hair up to where the neck and throat meet.



Before