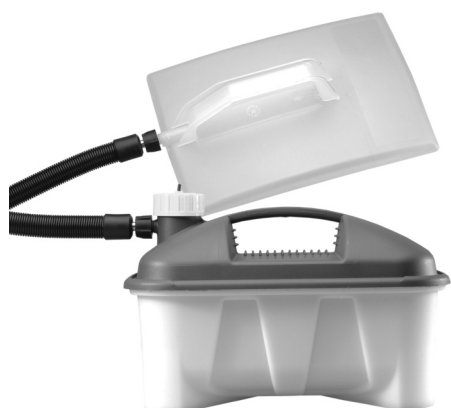


Earlex[®] **Steam Wallpaper Stripper**



SS125



SS76



SS77

OPERATING INSTRUCTIONS

Thank you for purchasing a Steam Wallpaper Stripper. This is a highly versatile machine for use all around the home. In order to obtain the best results please read the instructions before commencing any work.

THE MANUFACTURER WILL ACCEPT NO RESPONSIBILITY FOR THE USE OF THIS PRODUCT IF USED FOR ANY PURPOSES OTHER THAN THOSE DETAILED HEREIN.

BEFORE USE - PLEASE READ THE MANUAL AND SAFETY INSTRUCTIONS.

Please retain for future use

SAFETY CUT-OUT

A safety cut-out is fitted to prevent overheating of the element if the water boils low. If unit stops boiling during use this may be the cause. Wait for 2 minutes before removing filler cap then re-fill with water. The cut-out will self-reset and steam be produced again within 5-15 minutes.

The cut-out will not protect the element if a part-filled unit is tilted during use in a way which enables part of the element to be out of the water for longer than 15-20 seconds. Failure to do so can result in severe overheating, complete element failure and void your guarantee.

IF YOU HAVE ANY PROBLEMS WITH YOUR STEAM WALLPAPER STRIPPER OR IF YOU BELIEVE A PART IS MISSING, DO NOT RETURN TO STORE. PLEASE CONTACT EARLEX LTD ON 01483 454666.

SAFETY RULES

- Keep equipment away from children and pets.
- **Ensure boiler is placed on a flat level surface, and should the boiler become tilted in use - level again immediately. Failure to do so can result in severe overheating, complete element failure and void your guarantee.**
- Block boiler unit securely if using on stairs.
- The boiler becomes hot in use. Move only by using the carrying handle.
- Steam is produced at 100°C. Be careful, wear protective clothing and protect your hands with heat-resistant gloves or mitts.
- Never point hose or steamplate at anyone.
- Always keep steamplate tilted away from face and body, beware of hot drips and regularly empty collected condensation from steamplate - especially when stripping ceilings and high areas.
- Never remove filler cap or detach hose whilst unit is operating.
- Never block the safety valve.
- Never use outside when raining.
- Switch off and wait for 2 minutes before removing filler cap to refill boiler.
- Do not overfill the reservoir.
- Allow to cool completely before emptying boiler.
- Do not stand on boiler or hose.
- Do not drag or try to move boiler by pulling either the hose or the mains cord.
- Do not allow water or steam to enter light switches or power points.
- Do not leave unattended.
- Use only standard tap water. Never add detergents or chemicals.
- Extreme care must be taken if the unit is used in bathrooms. Always be aware of danger of electrocution from stored water in baths and sinks.
- Never change tools when the unit is operating.
- Always store upright.
- It is recommended that a RCD (residual current device) rated at 30mA is fitted into the mains supply socket for added protection against electric shock.
- Use only genuine manufacturer's parts.
- **WARNING!** Hot liquid or steam can burn. Steam may also condense into boiling droplets. Steam should not be directed towards electrical appliances (e.g. the inside of an oven).
- The equipment must be unplugged after use and before cleaning.
- If the supply cord is damaged, it must be replaced by Earlex or its appointed agents to avoid a hazard.
- This appliance can be used by children aged from 8 years and above and persons with reduced physical, sensory or mental capabilities or lack of experience and knowledge if they have been given supervision or instruction concerning use of the appliance in a safe way and understand the hazards involved. Children shall not play with the appliance. Cleaning and user maintenance shall not be made by children without supervision.

CAUTION !

Check the state of your plaster before starting work.

Steam can loosen weak, porous or poorly bonded plaster - which also loosens readily if cracked, holed or if the steemplate is held in one position for too long after the paper is soaked.

Weak plaster can normally be detected by tapping a few areas of wall. A hollow sound indicates that you should proceed only with extreme care - stopping immediately if you hear a cracking sound or plaster starts to break loose.

The steam stripper is safe for drywall/plaster board surfaces but whatever the material, it is always wise to check a small area before starting work properly.

PROTECT YOUR HOME

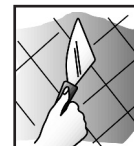
The heat generated by the boiler unit can mark carpets, soft furnishings, table tops, cabinets, etc. To prevent this it is recommended to place the unit on a wooden board, tray or other barrier - making sure it will not slip off one side or tilt during use. Dust sheets or newspapers are not suitable heat protectors for delicate surfaces.

PREPARATION

To achieve faster paper removal always gently score the areas to be stripped.

With heavily embossed, vinyl-coated or painted papers this is essential. Either use a proprietary perforator tool or alternatively score the paper with the edge of a wall scraper in a criss-cross pattern with 150mm (6 inch) spacing.

As with all decorating work be sure to protect carpets and furniture with covers.



SYMBOLS

CAUTION



STEAM IS HOT!



WARNING: Hot liquid or steam can burn. Danger of scalding. Steam may also condense into boiling droplets. Steam should not be directed towards electrical appliances. Danger of scalding appears on the cap as either symbol.

OPERATION

The unit is designed for safe, fast removal of wallpaper but please be aware that steam is produced at 100°C - so be careful, wear protective clothing and protect your hands with heat-resistant gloves or mitts.

FILLING STEAM WALLPAPER UNITS: Remove filler cap and fill unit to MAX. level line or indicator with clean - preferably hot - water. Replace filler cap.

For a shorter steaming time use less water. **Do not overfill the unit or hot water will be forced up the steam hose.**

Screw hose onto threaded outlets of boiler and steemplate, hand-tight is sufficient. **Do not overtighten** but do check for hand-tight fit from time to time during use.

Connect mains cord from unit to power socket and switch on. It can take up to 15 mins (approx.) before steam is produced - depending on fill water quantity and temperature.

Do not leave unattended and keep children & pets out of the room.

SWS MODEL	BOILER CAPACITY	STEAM TIME
SS76	5L	90 Mins*
SS77	5L	78 Mins*
SS125	4L	72 Mins*

* Approx steam time before the safety cut-out operates.

Just before full steam production a small amount of bubbling and water will occur at the steemplate.

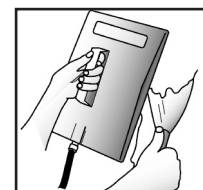
BEWARE OF HOT WATER DISCHARGE PRIOR TO STEAM EMISSION.

STRIPPING: Remember to check a small area first.

Operation is simple for both right and left-handed people. Simply hold the steemplate flat against the wallpaper for approx. 10 seconds. Now move the steemplate to the spot immediately next to the one just steamed - from which the paper should now easily come away with a little help from a wallpaper scraper.

Working this way should enable continuous paper removal although it may be necessary to steam for longer periods with some papers, or if not completely removed first time.

Operate steamer until water level is low, then unplug unit and allow to cool for at least 2 minutes.



BEWARE OF STEAM - before removing the filler cap and re-filling unit. When finished, allow to cool completely and empty unit. Always store unit empty.

SAFETY CUT-OUT

A safety cut-out is fitted to prevent overheating the element if the water boils low. If unit stops boiling during use this may be the cause. Wait for 2 minutes before removing filler cap then re-fill with water. The cut-out will self-reset and steam be produced again within 5-15 minutes.

The cut-out will not protect the element if a part-filled unit is tilted during use in a way which enables part of the element to be out of the water for longer than 15-20 seconds.

OTHER USES FOR THE STEAMPLATE

Artex® - Normally Artex® can be removed using the same method as for wallpaper although the steaming time will be longer.

CAUTION! Some textured finishes may contain asbestos which may be hazardous to health and which are subject to licensing controls operated by the HSE (Health & Safety Executive).

Vinyl Floor Tiles - Vinyl floor tiles can also be removed if the steamplate is left long enough for the heat to penetrate the adhesive. Once the adhesive is hot it softens and the tile can be peeled from the floor.

Disinfecting Soil - To disinfect soil in seed trays or greenhouses rake the soil to obtain a fine surface. Leave the steamplate on each section, for 2 to 2½ minutes which should ensure that the steam has penetrated the surface.

Killing Weeds - Steam will kill weeds on paths and patios without the use of chemicals. You will need to steam the weeds for 1 to 1½ minutes in order to kill them.

SMALL STEAMPLATE (Optional Accessory - Not included in all kits)

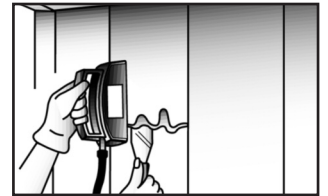


DANGER FROM STEAM! Always be aware that steam is being produced whilst the tool is in operation. Always wear a protective glove when using the small steamplate. This tool can be used to strip wallpaper in awkward areas, i.e. around door frames and in corners, etc. Use similarly to the large steamplate, steaming one area whilst stripping a previously steamed area. This will ensure quick and efficient removal of the wallpaper.



JET NOZZLE CLEANER (Optional Accessory - Not included in all kits)

IMPORTANT: Always check the suitability of materials before steam cleaning. Steam is being generated at 100°C. Do not use on any surfaces that cannot stand this temperature, e.g. Draylon®, delicate fabrics, etc. Always test a small area of the material - preferably a portion that is normally unseen - and allow to dry before starting the full cleaning task. Do not soak materials being cleaned. Only light application of steam is required.



Strips hard to reach areas

ASSEMBLING THE TOOL

The Universal Handle (AC302) is used in conjunction with the Jet Nozzle Cleaner. Align the outline triangle on the handle with the triangle on the accessory. Push the handle into the accessory and twist so that the solid triangles on the handle and accessory are aligned (Diagram 1). Over time, you may find that your steam cleaning accessories become awkward to assemble to the Universal Handle. This is due to the steam reducing the lubrication properties of the O-Ring seals. In this event, simply lubricate the O-Ring seals as illustrated (Diagram 2) using washing-up liquid or furniture polish.

OPERATING THE TOOL

Connect the Universal Handle to the Jet Nozzle head. Select the scraper head or brush to fit the Nozzle end if required and push on to the Nozzle.

Plug the boiler unit in and wait for steam to appear at the accessory head.

BEWARE OF HOT WATER DISCHARGE PRIOR TO STEAM EMISSION.

This accessory can be used for cleaning all round the house, stoves, cupboards, work surfaces, toilets, sinks, lawnmowers, etc. It both cleans and disinfects at the same time. It can also be used to defrost your freezer in minutes with no inconvenience. **Check with fridge/freezer manufacturer for advice before use.**

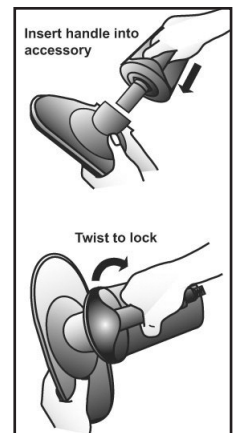


Diagram 1
Assembling Handle



Cleans lawnmowers



Defrosts freezers

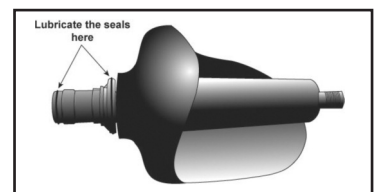


Diagram 2
Seal Lubrication

TROUBLESHOOTING

• Unit Fails to Boil

The unit has probably not been left long enough to cool - refer to section on safety cut-out. Check the fuse in the plug is sound and is rated at 13 Amps.

If using an extension lead check that it is rated at a minimum of 10 Amps and fully unwound.

• Unit Leaks Steam from Pressure Relief Valve

The pressure relief valve is a special low pressure valve and cannot be replaced by any other valve. If steam is leaking from the valve, the most likely cause is a blockage in the hose. Allow the unit to cool then remove the hose and check for any blockage. Always check the inlet in the tool you are using.

UNDER NO CIRCUMSTANCES FORCE THE VALVE SHUT. THIS IS OPERATING FOR YOUR PROTECTION.

DESCALING

To maintain peak performance of the unit, particularly in areas of hard water, it may be necessary to descale the element in the unit. Proprietary kettle descaling products can be used in your unit - always follow the manufacturer's instructions.

IF YOU REQUIRE FURTHER ASSISTANCE PLEASE CONTACT OUR HELPLINE ON:

Tel: 01483 454666 Fax: 01483 454548

Opening Hours: Monday - Thursday 08.30-17.00 and Friday 08.30-15.45 (Except Bank Holidays)

MAINS CONNECTION

Your unit has been supplied with a mains cord and a fitted plug. This is identified by the fuse holder in the base of the plug. Please read the following safety instructions before use.

1. If the fitted plug is cut off from the mains lead then the plug must be disposed of safely. NEVER under any circumstances insert such a plug into a 13 Amp socket-outlet.
2. **NEVER** under any circumstances use the appliance or mains lead without the fuse cover fitted. This is the little cover fixed into the base of plug to hold the fuse in place.
3. If you lose the fuse cover then please contact any electrical dealer for a replacement or ring our helpline above.
4. A replacement fuse must be rated at 13 Amps. This must be manufactured and approved to BS1362.
5. **IF IN ANY DOUBT PLEASE CONSULT A QUALIFIED ELECTRICIAN.**

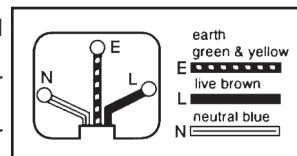
If you need to fit a plug to the mains lead, this should be fitted in accordance with the wiring instructions below, and will need to be used with a 13 Amp fuse. If in doubt consult a qualified electrician.

WARNING - THIS APPLIANCE MUST BE EARTHED. If you are using an extension lead it must be rated at a minimum of 10 Amps and fully unwound. Do not operate with a cord rated at less than 10 Amps as this will cause premature failure of the element which is not covered by the guarantee. As the colours of the wires in the mains lead of this appliance may not correspond with the coloured markings identifying the terminals in your plug, proceed as follows:

The wire which is coloured green and yellow must be connected to the terminal in the plug which is marked with the letter E or by the earth symbol, or coloured green.

The wire which is coloured blue must be connected to the terminal which is marked with the letter N or coloured black.

The wire which is coloured brown must be connected to the terminal which is marked with the letter L or coloured red.



INFORMATION ON THE DISPOSAL OF WASTE ELECTRICAL AND ELECTRONIC EQUIPMENT KNOWN AS WEEE

Your attention is brought to new directives applicable to the disposal of this electrical equipment, where in accordance with the legislation this product must not be disposed of in your normal household waste. Instead it is your responsibility to dispose of this type of waste by handing it over to special designated collection points for recovery and recycling. This product is marked with a 'Wheelie bin' symbol with a cross on it to remind you of this action. The objective of this directive is to help conserve resources and ensure that it is recycled in a manner that protects human health and the environment. For more information about where you can drop off your waste please contact your local authority, take back facilities are free of charge.



NOTES

NOTES

GUARANTEE

This product is guaranteed for a period of 24 months against faulty materials and workmanship. Whilst every possible care is taken by the manufacturer to ensure that our products leave the factory in good working order, the manufacturer cannot under any circumstances accept liability for problems or damage caused by their subsequent use. It is the responsibility of the user to ensure that surfaces to be treated, cleaned or stripped are suitable for steam. This guarantee does not affect your statutory rights. This guarantee excludes the use for hire purposes.

EC Declaration of Conformity

We declare that the units SS76, SS77 and SS125 conform to: LVD 2006/95/EC, EN60335-1, EN60335-2-54, EMF EN62233; EMC 2004/108/EC, EN55014-1, EN55014-2, EN61000-3-2, EN61000-3-3.



Tim Hopper-Technical Director

Patents: GB2300698, GB 2422731

Design Registration Nos: GB 3004739, DE 40205274.9, US D496,504S.



© Earlex Ltd. 2012

Earlex Ltd., Opus Park, Moorfield Road, Guildford, Surrey, GU1 1SZ.
Tel: +44 (0) 1483 454666. Fax: +44 (0) 1483 454548.
email: enquiries@earlex.co.uk website: www.earlex.com

B40 10/12