



eTank Pro kit

User Guide

Please read before use

Quick Start:



Step one:

Push down and unscrew the mouthpiece from the clearomiser. Then fill the tank with eLiquid.



Step two:

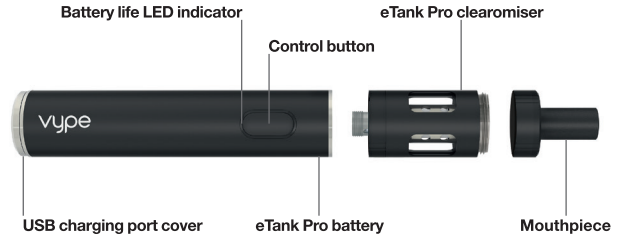
Screw the mouthpiece back on and give the eLiquid 5 minutes to settle.



Step three:

Click the control button 3x and vape.

Know your Vype eTank Pro

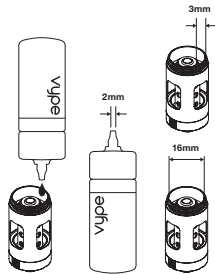


Tips

- Ensure the eTank Pro clearomiser contains eLiquid.
- Do not pour eLiquid down the central atomiser hole.
- For a great vaping experience, it is recommended to use Vype's eLiquid range with your Vype eTank Pro.
- For optimal performance, your eTank Pro battery should be fully charged before first use.
- Your eTank Pro can be locked or unlocked by rapidly clicking the control button 3 times.

How to fill your Vype eTank Pro clearomiser

- To fill your eTank Pro clearomiser, first push down and unscrew the mouthpiece from your eTank Pro clearomiser.
- Pour eLiquid down the inside of the tank, taking care not to get eLiquid into the central atomiser hole.
- To avoid any leakage, ensure that your clearomiser is not overfilled – the maximum clearomiser capacity is 2.0ml.
- Screw the mouthpiece back onto the clearomiser.
- After filling the clearomiser for the first time, wait 5 minutes before vaping, to allow the wick to absorb eLiquid.



How to use your Vype eTank Pro

- Ensure the eTank Pro clearomiser contains eLiquid.
- For optimal performance, your eTank Pro battery should be fully charged before first use.
- Your eTank Pro can be switched on, or switched off, by rapidly clicking the control button 3 times.
- To begin your vaping experience, first switch on the device, then press and hold down the control button whilst inhaling.
- When not in use your eTank Pro should be switched off by rapidly clicking the control button 3 times.
- The atomiser should be changed regularly in line with frequency of use (typically every 2-4 weeks).
- If you notice a deterioration in the taste or quality of the vapour you should replace your atomiser – visit govype.com to purchase new eTank Pro atomisers.

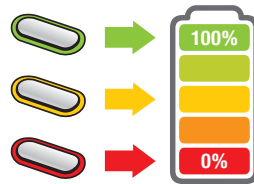
Battery charging indicator on your Vype eTank Pro

When you press the control button on your eTank Pro, the battery charge level is indicated by the following colours:

Green – Your battery is fully charged and battery voltage is higher than 3.75V.

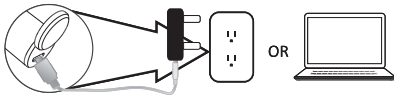
Amber – Your battery is on half power and battery voltage is between 3.6V and 3.75V.

Red – Your battery is on low power and you need to recharge your battery.



How to charge your Vype eTank Pro battery

- To charge your eTank Pro battery, connect your USB charging cable (supplied with your eTank Pro kit) to the charging port of the device.
- Connect the other end of the USB charging cable to the USB port of a computer or a Vype wall plug.
- When the light on your eTank Pro turns green, your battery is fully charged. When red it is at low power and when it turns amber, it is at half power.
- Once your battery is fully charged, it will automatically stop charging.
- It should take no longer than 4 hours to fully charge your eTank Pro battery.

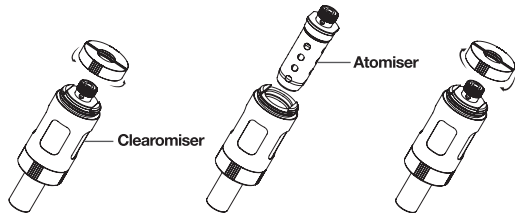


How to replace your Vype eTank Pro atomiser

You should replace your atomiser regularly in line with frequency of use (typically every 2-4 weeks). You should also change your atomiser if you experience a deterioration in taste or vapour quality.

- To replace your atomiser, first ensure that your clearomiser is empty of any eLiquid.
- Detach the clearomiser from the eTank Pro battery section.
- Hold the clearomiser with the screw thread pointing up.
- Unscrew the bottom metal cap of the clearomiser.
- Hold the atomiser and gently pull to remove.
- Carefully and safely dispose of the used atomiser.
- Align the flat side of the new atomiser and push to carefully insert into the clearomiser.

- Ensure that the atomiser is completely inserted.
- Carefully and firmly screw the bottom metal cap back onto the clearomiser.
- Reattach the clearomiser to the eTank Pro battery section.



If your eTank Pro stops producing vapour

- Check the eLiquid level in your clearomiser and top up if necessary.
- Check that your battery is charged.
- Check for any build-up of dirt/dust on the eTank Pro battery screw connector and central battery electrode (wipe with a dry, clean cloth if necessary).

Important product use information

- To avoid the risk of fire, injury and/or damage to your Vype eTank Pro or other property, only charge your Vype eTank Pro battery with the equipment provided in your Vype eTank Pro kit or with compatible Vype charging accessories (available at govype.com).
- Never leave your battery unattended whilst on charge.
- Never keep loose batteries in your pocket, particularly next to keys or coins.
- Do not use e-cigarettes when you, or anyone in the vicinity, is using oxygen.
- Vype eTank Pro is recommended for use with Vype eLiquids. Vapour quality and satisfaction may vary if used other than as recommended.
- The Vype eTank Pro clearomiser is made from glass so should be treated carefully as it may break if dropped.
- Do not use your Vype eTank Pro if the coil within the atomiser has become flooded. If this occurs, clean your clearomiser and replace the atomiser.

Important product use information (continued)

- Do not leave your eTank Pro in direct sunlight or near sources of heat.
- Do not use e-cigarettes around flammable liquids or gases.
- Input voltage 5v DC, 1000mA.
- A build-up of dust or dirt inside your Vype eTank Pro battery unit may reduce performance and disrupt normal charging. To minimise this, check regularly and if necessary wipe the battery connector with a clean, dry cloth.
- Your eTank Pro battery has over-charge and short-circuit protection.
- Your eTank Pro device is only suitable for operation at room temperature. If your device is operated other than at room temperature, it may be damaged or stop working.
- Keep Vype products dry. Precipitation, humidity or moisture can corrode and damage electronic circuits.

- The recommended storage temperature for Vype products is room temperature.
- If the control button on your eTank Pro device is pressed for 15 seconds or longer, the light on the control button will flash and the device will turn off until the button is pressed again.
- Protection provided by the equipment may be impaired if used in a manner not specified by the manufacturer.
- If you have any queries or doubts about the use of your eTank Pro or any other Vype products, please contact the Vype Customer Care Team:



Vype Customer Care,
Distributed by British American Tobacco
UK Limited, One Eton Street,
Richmond upon Thames,
London, TW9 1EF, UK.

Phone: +44 (0)800 1337 350

About the Vype eTank Pro battery

Vype eTank Pro contains a lithium-ion battery.

Disposal and recycling of Vype products

Electrical and electronic goods and batteries should not be disposed of as part of regular household waste, but should be separately collected for recovery and recycling. We are committed to minimising our impact on the environment – please see our website, govype.com, for more information on how to dispose of your Vype products and details of our recycling programme and how to return used products to us.

**THIS PRODUCT IS DESIGNED FOR USE WITH NICOTINE WHICH IS A HIGHLY ADDICTIVE SUBSTANCE.
NOT RECOMMENDED FOR NON-SMOKERS.**

KEEP OUT OF REACH OF CHILDREN. KEEP OUT OF REACH OF ANIMALS.

THIS PRODUCT MAY BE HAZARDOUS TO HEALTH.

THIS PRODUCT IS NOT SUITABLE FOR USE BY:

- Persons under the age of 18.
- Persons who are allergic/sensitive to nicotine.
- Pregnant or breast-feeding women.
- Persons who should avoid using tobacco or nicotine products for medical reasons.
- Persons with an unstable heart condition, severe hypertension or diabetes.

IMPORTANT SAFETY INFORMATION:

Immediately stop use of this product and seek medical advice if you experience any of the following:
Development of an irregular heartbeat; allergic reaction such as rash, itching or swelling of the tongue,
mouth or throat; feeling faint; nausea; headache; or any other unusual or adverse effect.

Made in China.



OVER 18 ONLY

Model Number: etp1
VY_UK_ETP_STK_LFT01



vype

govype.com