

Free Standing Cheval Mirror

Assembly Instructions - Please keep for future reference

624/4963

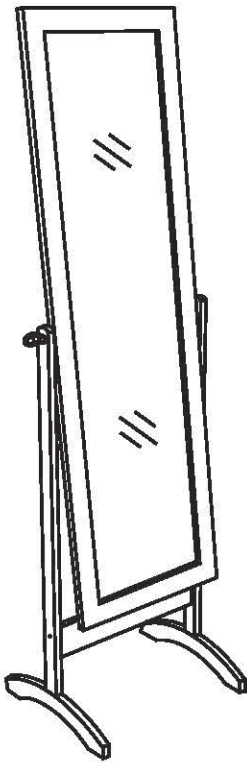
623/4344

Dimensions

Width - 41cm

Depth - 35cm

Height - 146cm

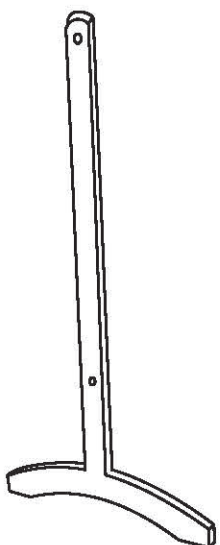


Important - Please read these instructions fully before starting assembly

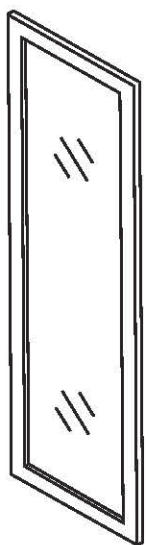
If you need help or have damaged or missing parts, call the Customer Helpline: 08456 400800

Components

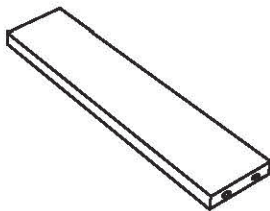
Please check you have all the components listed below



1 Stand x 2

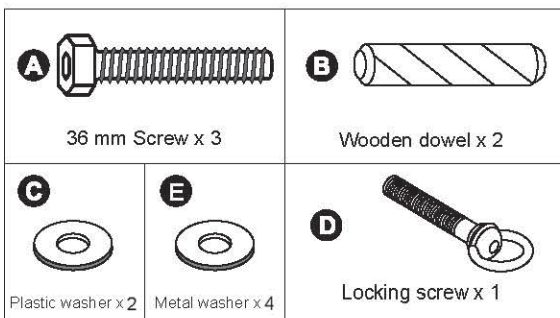


2 Mirror



3 Cross bar

Components-Fittings



Tools required



Allen key

Assembly Instructions

Step 1

Fitting cross bar

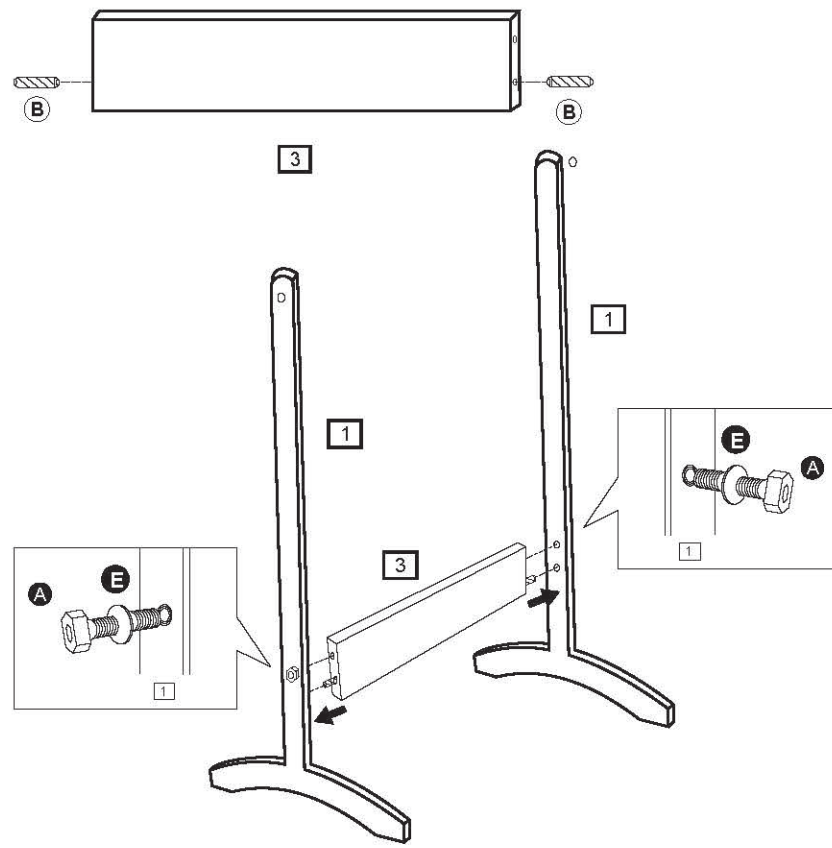
Two people are needed here.

Firstly, as per image shown to insert Wooden Dowels **B** into Cross Bar **3** firmly.

Then insert the other head of Wooden Dowels **B** into the holes on the side of Stands **1** firmly.

As per image shown to insert Metal washer **E** into Stand **1** firmly.

Secure Cross Bar **3** and Stands **1** together firmly with Screws **A**.



Step 2

Fitting mirror

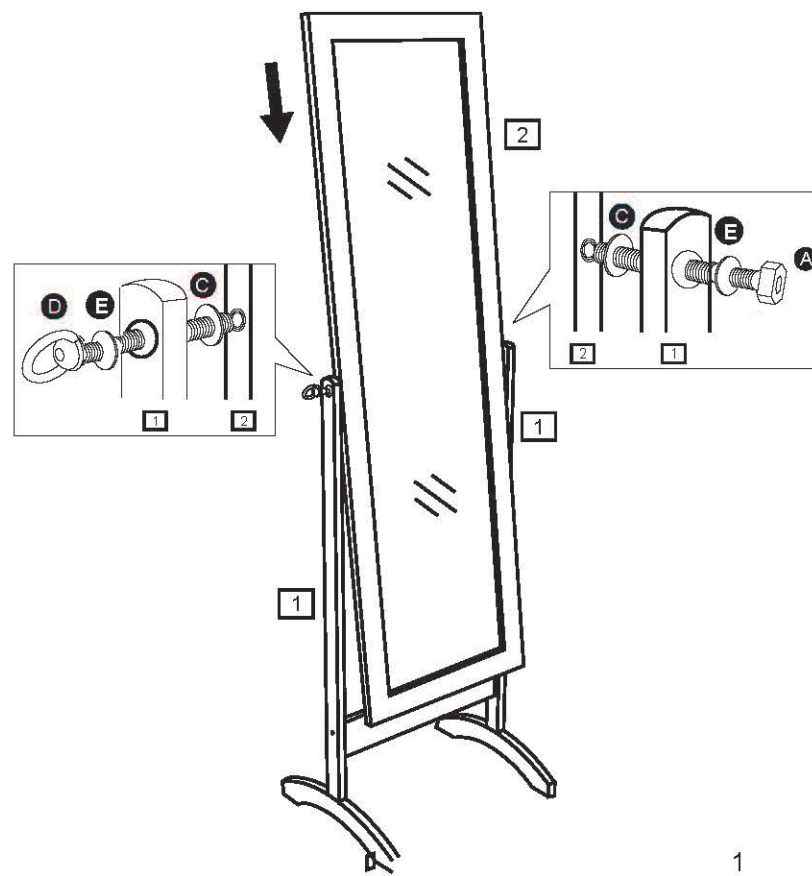
Two people are needed here.

CAUTION: When handling mirror always take extra care. Ensure no children are in the assembly area.

As per image shown to secure Mirror **2** and Stands **1** together firmly with fixings provided.

Plastic Washer **C** put between Mirror **2** and Stand **1**.

As per image shown to insert Metal washer **E** into Stand **1** firmly.



1

Assembly Instructions

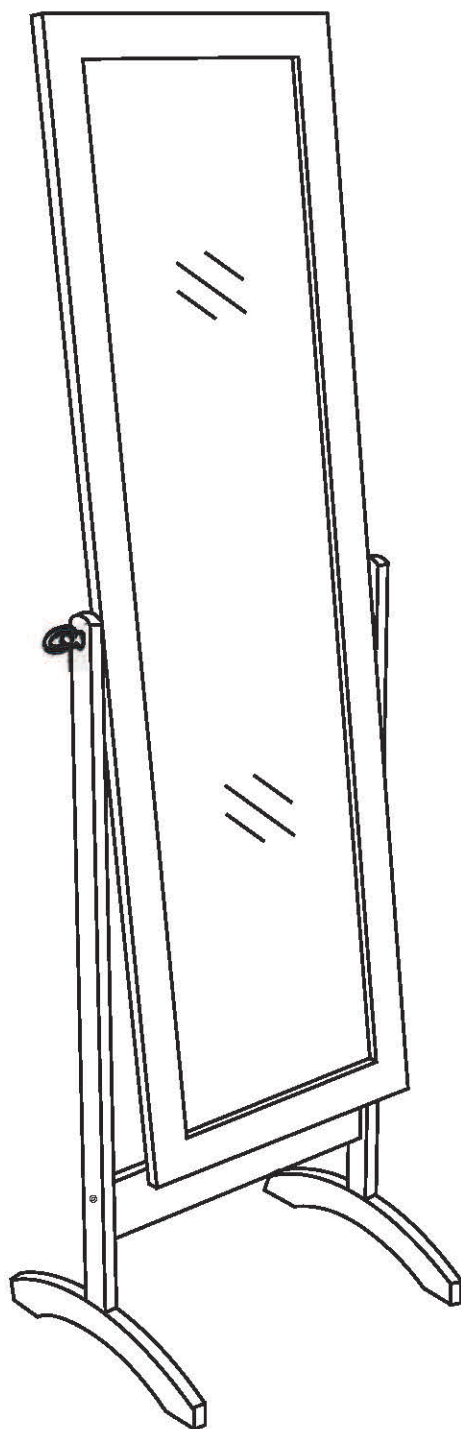
Step 3

Finishing & Locating

CAUTION: When handling mirror always take extra care. Ensure no children are in the assembly area.

Two people are needed here.

Carefully place finished unit into a desired position, then it is ready for you to use.



FINISHED UNIT

Assembly is complete.

If you need help of have damaged or missing parts, call the Customer Helping: 08456 400800



Safety and Care Advice

Important - Please read these instruction fully before starting assembly

- Check you have all the components and tools listed on page 2.
- Remove all components and fittings from the packaging and separate them into their groups.
- Keep children and animals away from the work area, small parts could choke if swallowed.
- Make sure you have enough space to layout the parts before starting.
- Do not stand or put weight on the product, this could cause damage.
- Assemble the item as close to its final position (in the same room) as possible.
- Assemble on a soft level surface to avoid damaging the unit or your floor.
- Parts of the assembly will be easier with 2 people.



We do not recommend the use of power drill/drivers **for inserting screws**, as this could damage the unit. Only use hand screwdrivers.

- Dispose of all packaging carefully and responsibly.

Care and maintenance

- Only clean using a damp cloth and mild detergent, do not use bleach or abrasive cleaners.
- From time to time check that there are no loose screws on this unit.
- This product should not be discarded with household waste. Take to your local authority waste disposal centre.

Safety Warning Information - Keep these instructions for future use

This unit complies with **BS 7449:1991**

Catalogue Number: 624 /4963

Retailer: Argos

Retailer Address:

489-499 Avebury Boulevard
Saxon Gate West
Central Milton Keynes
Bucks, Mk9 2NW

This unit contains film backed mirror of a nominal thickness of 4mm, which is not required to be classified to BS6206 Class C.

If a glass is chipped or broken replace with glass of the type described on this label. Consult the manufacture, retailer, or agent with regard to obtaining a manufacturing specification and shape for replacement glass quoting the model number, and batch number or date of manufacture.

Warnings

- Do not place very hot or very cold items against or in close proximity to glass surface unless an adequately thick insulating material is used to prevent such items from coming into contact with the glass.
- When cleaning glass panels or mirrors use a damp cloth or leather with washing up liquid or soft soap if necessary; do not use washing powders or any other substance containing abrasives since these substances scratch glass.
- Do not strike the glass with hard or pointed items.
- Do not sit or stand upon horizontal glass surfaces.