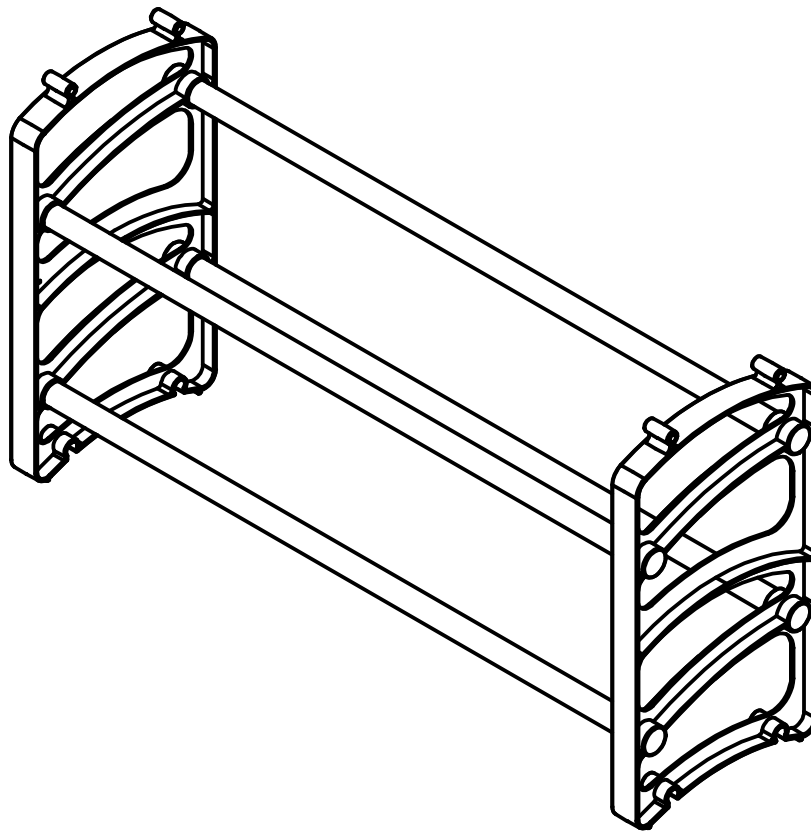


HM 2 TIER STACKABLE SHOE RACK NEW

Assembly Instructions - Please keep for future reference

612/5783



Dimensions

Width - 61.5cm
Depth - 18cm
Height - 33cm

Important – Please read these instructions fully before starting assembly

If you need help or have damaged or missing parts, call the **Customer Helpline: 03456 400800**



Safety and Care Advice

Important – Please read these instructions fully before starting assembly

- Check you have all the components and tools listed on the following pages.
- Remove all fittings from the plastic bags and separate them into their groups.
- Keep children and animals away from the work area, small parts could choke if swallowed.
- Make sure you have enough space to layout the parts before starting.

- During assembly do not stand or put weight on the product, this could cause damage.
- Assemble the item as close to its final position (in the same room) as possible.
- Assemble on a soft level surface to avoid damaging the unit or your floor.
- Parts of the assembly will be easier with 2 people.



- To reduce the likelihood of damaging your product please ensure that your power drill is set on a low torque setting.

Care and maintenance

- Only clean using a damp cloth and mild detergent, do not use bleach or abrasive cleaners.
- From time to time check that there are no loose screws on this unit.
- This product should not be discarded with household waste. Take to your local authority waste disposal centre.

Handy Hints

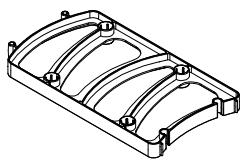
- Assemble all parts and bolts loosely during assembly, only once the product is complete should you fully tighten the bolts
- Regularly check and ensure that all bolts and fittings are tightened properly.

Note: If required the next page can be cut out and used as reference throughout the assembly. Keep this page with these instructions for future reference.

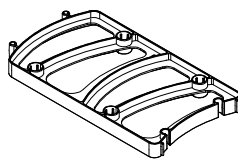
Components - Parts

If you have damaged or missing components,
call the **Customer Helpline: 03456 400800**

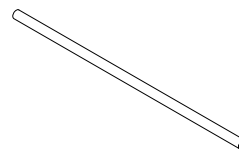
Please check you have all the fittings listed below



1 Left Side Frame x 1



2 Right Side Frame x 1



3 Steel Tube x 4

Assembly Instructions

Step 1

Assemble the Unit

1. Connect Steel Tube **3** together with Left Side Frame **1** and Right Side Frame **2**.

see fig.1

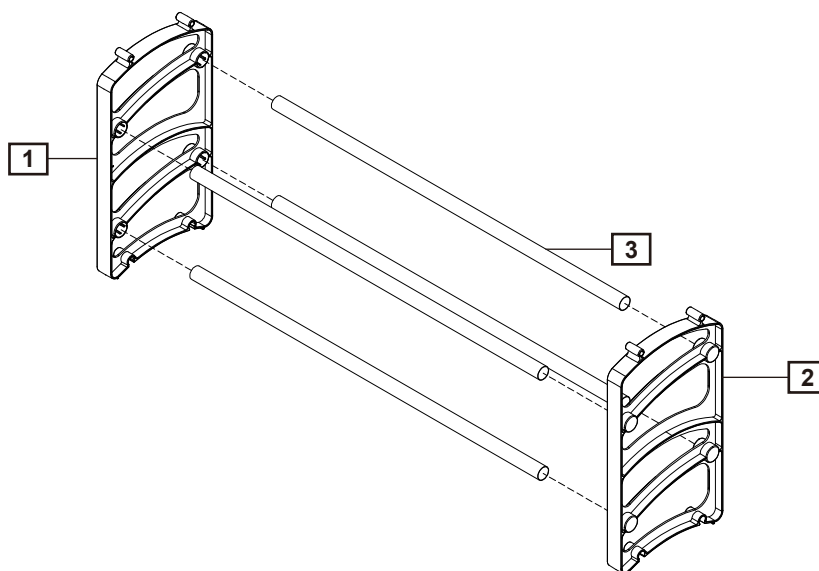


fig. 1

Step 2

The unit is complete.

see fig.2

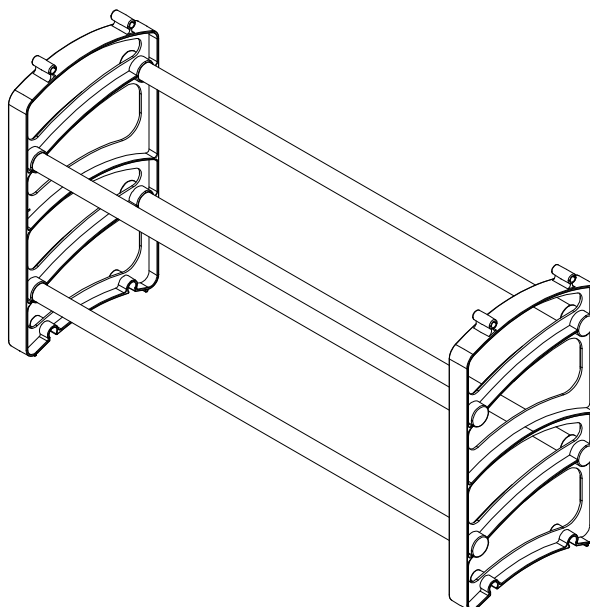


fig. 2