

**CHAD VALLEY BABY™**

Circus Friends™

**603/8760**

Walker



**IMPORTANT! KEEP FOR FUTURE REFERENCE.**

**Argos**

Avebury, 489-499 Avebury Boulevard, Milton Keynes, MK9 2NW

[www.argos.co.uk](http://www.argos.co.uk)

Customer Helpline: 03456 400 800



# IMPORTANT SAFETY INSTRUCTIONS

## **WARNING**

### **TO PREVENT SERIOUS INJURY OR DEATH:**

- Use the walker only if the child meets ALL of the following conditions:
  - Can sit up by himself or herself (approximately six months of age)
  - Cannot walk by themselves
  - Weighs less than 26 lbs (12 kg).
- Never leave child unattended. Always keep child in view while in walker.
- The child will be able to move rapidly when in the walker.
- Clean friction components regularly to maintain stopping performance.
- Allow child to use walker only for short periods of time (20-minute intervals).
- **STAIR HAZARD:** Avoid serious injury or death. Block stairs/steps securely before using walker.
- Use only on flat surfaces free of objects that could cause the walker to tip over.
- To avoid burns, keep the child away from hot liquids, oven ranges, radiators, space heaters, fireplaces, and any other hot surfaces.
- Keep all electrical components and other potential hazards out of reach. The child will be able to reach objects previously out of reach.
- Prevent collisions with doors, windows, and furniture.

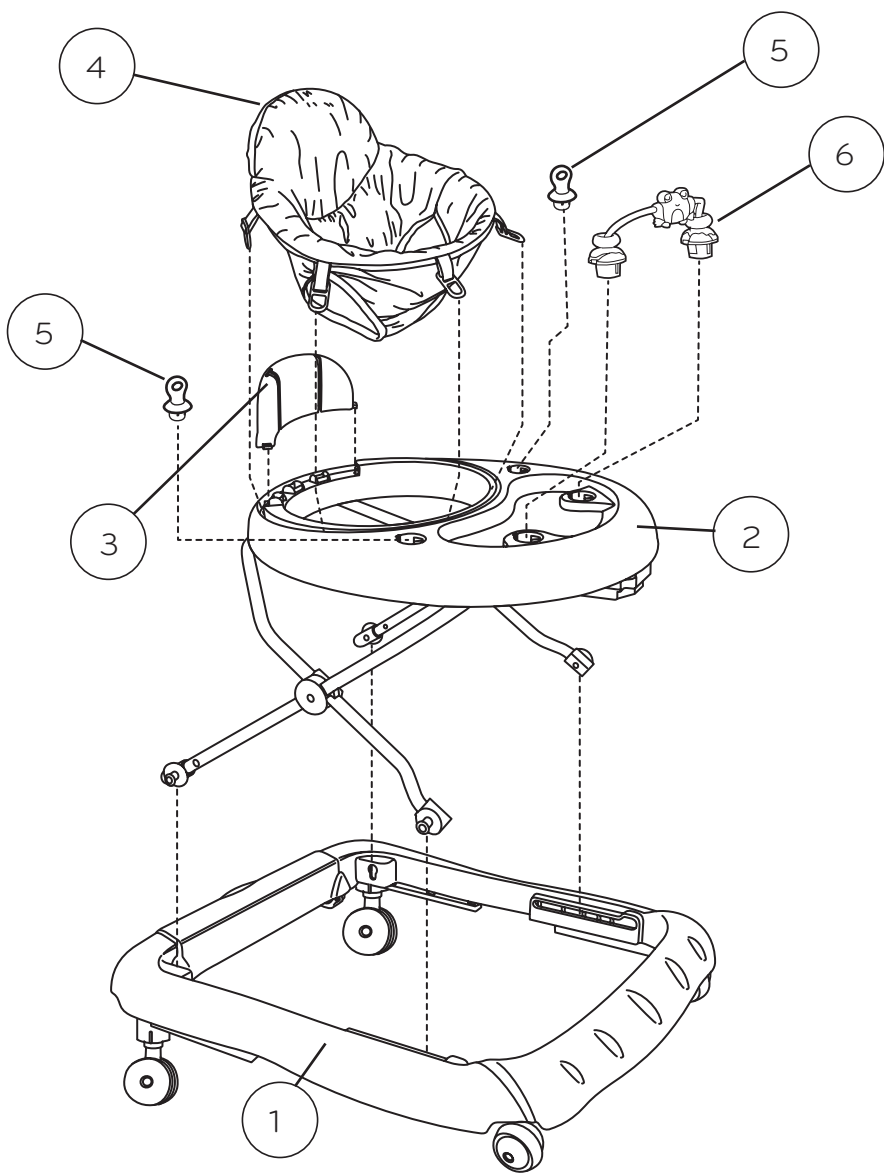
### **IMPORTANT**

- Adult assembly required.
- Care should be taken in unpacking and assembly.
- Examine product frequently for damaged, missing, or loose parts.
- **DO NOT** use if any parts are missing, damaged, or broken.

---

## Parts List and Drawing

No.	Qty.	Description
1	(1)	Base
2	(1)	Frame with table surface
3	(1)	Seat back
4	(1)	Fabric seat
5	(2)	Link loop
6	(1)	Toy bar with spinner rings



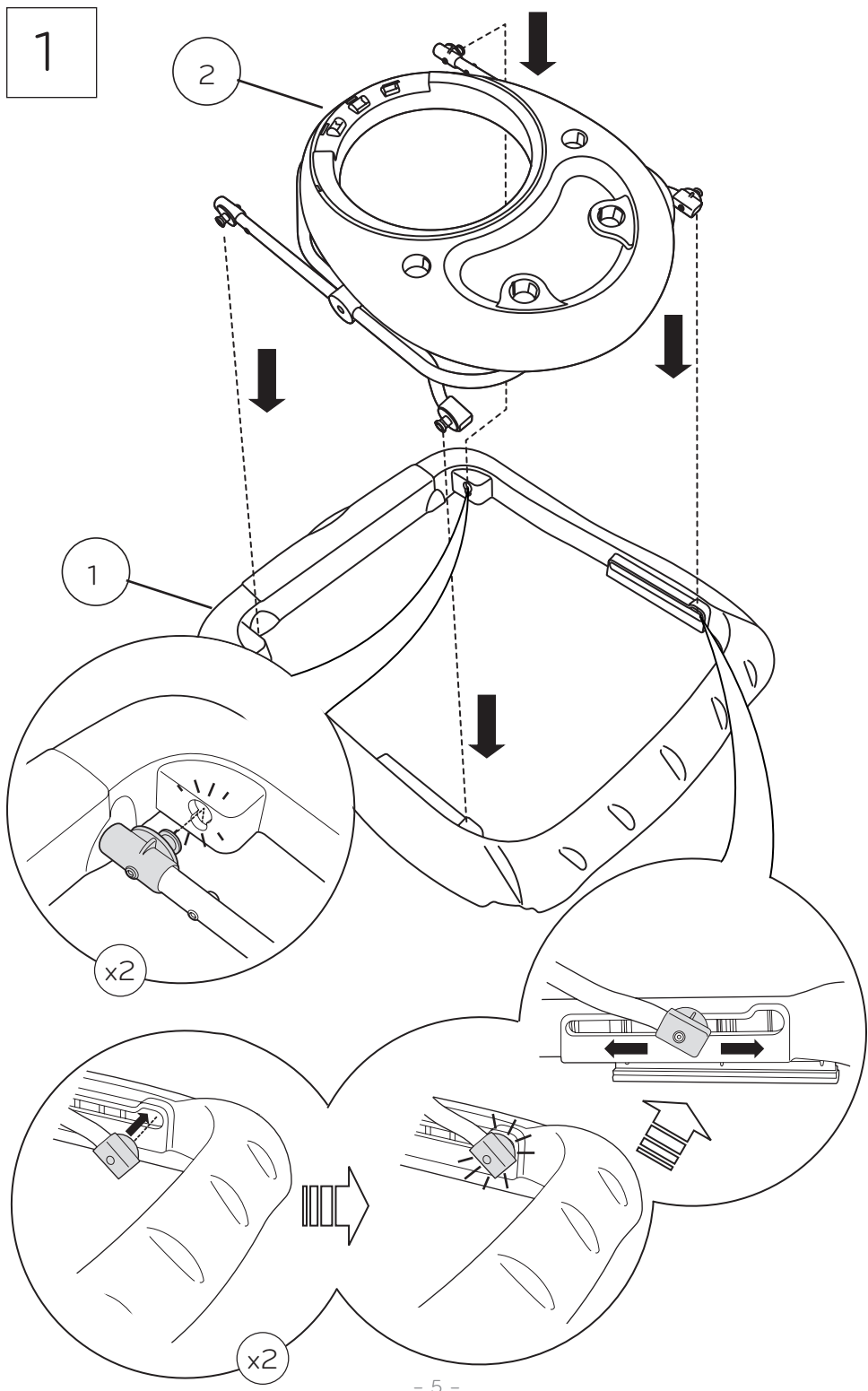
1

2

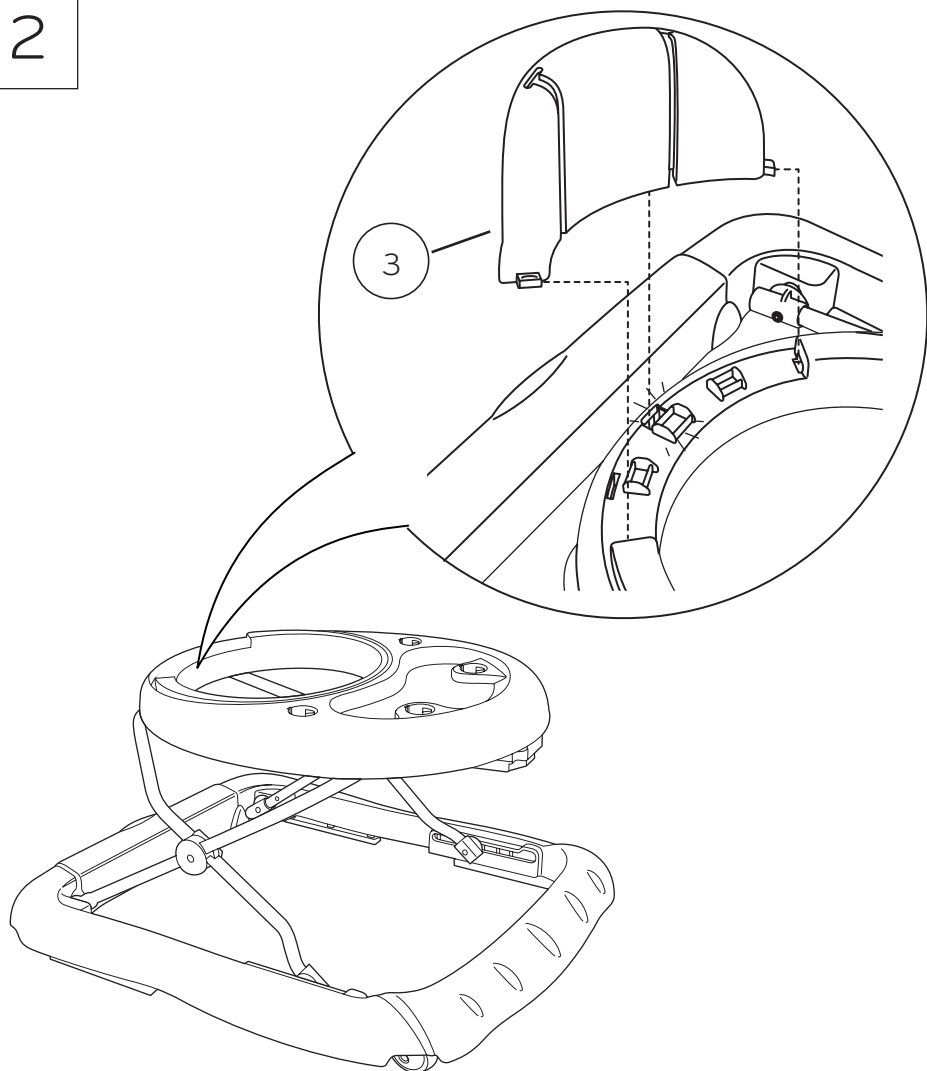
1

x2

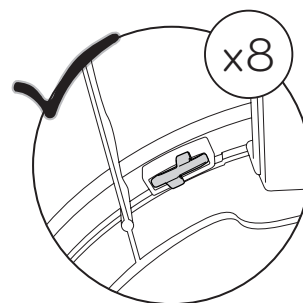
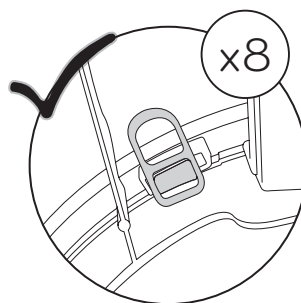
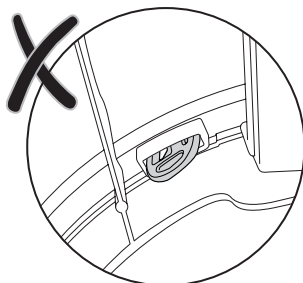
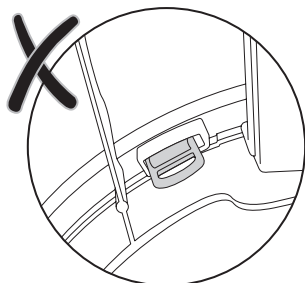
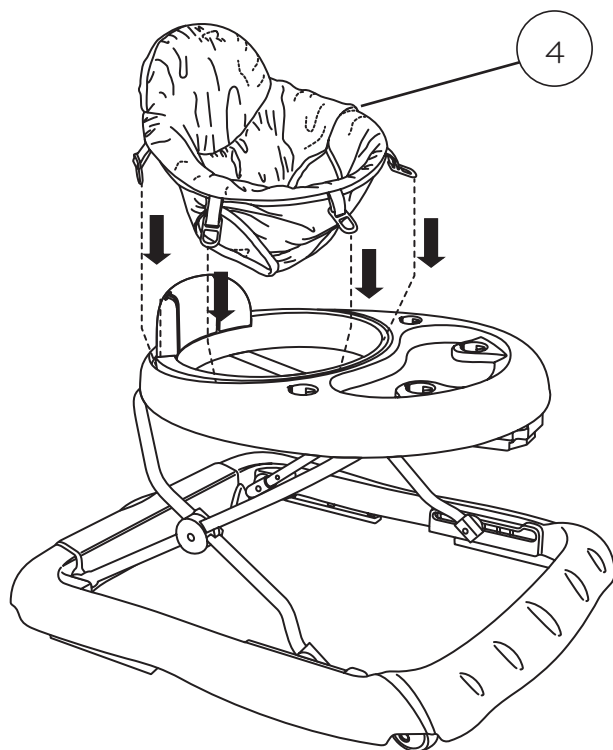
x2



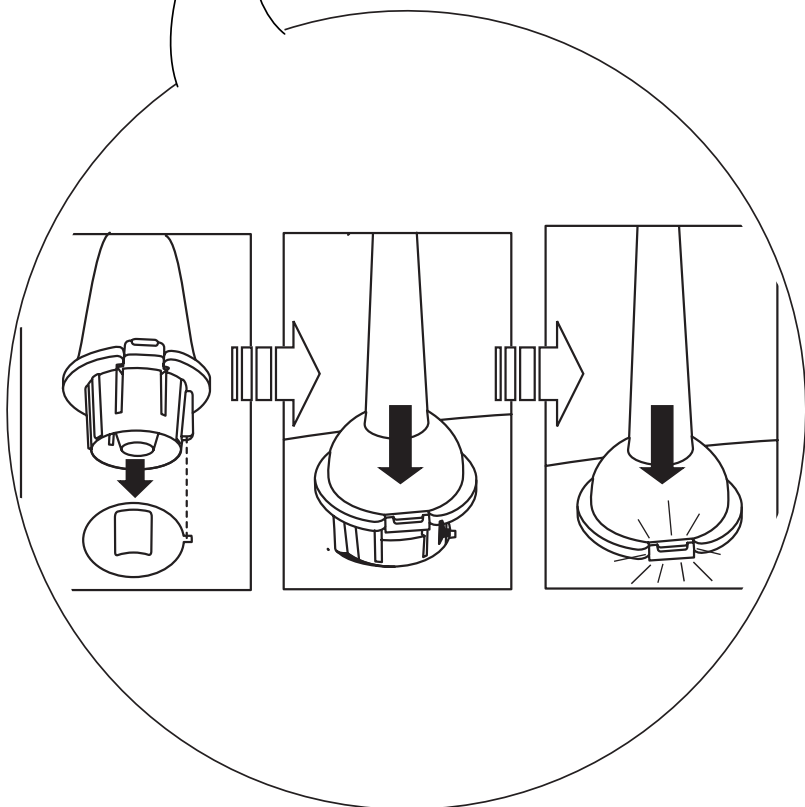
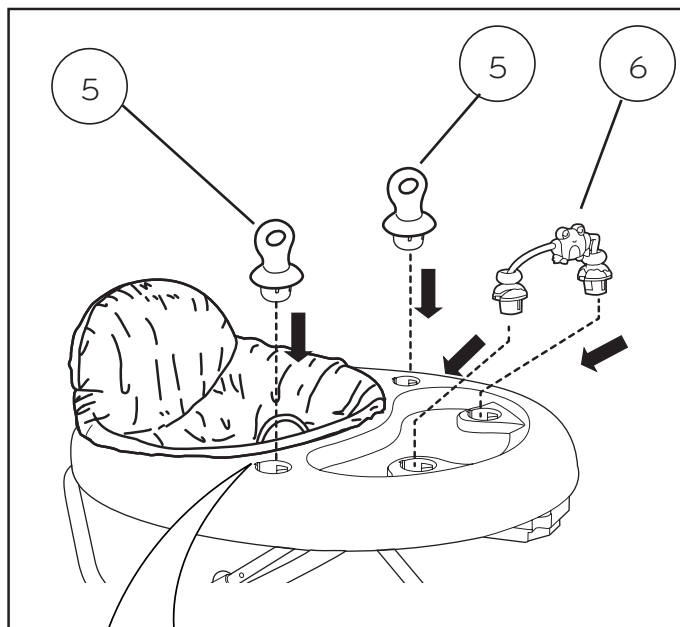
2



3



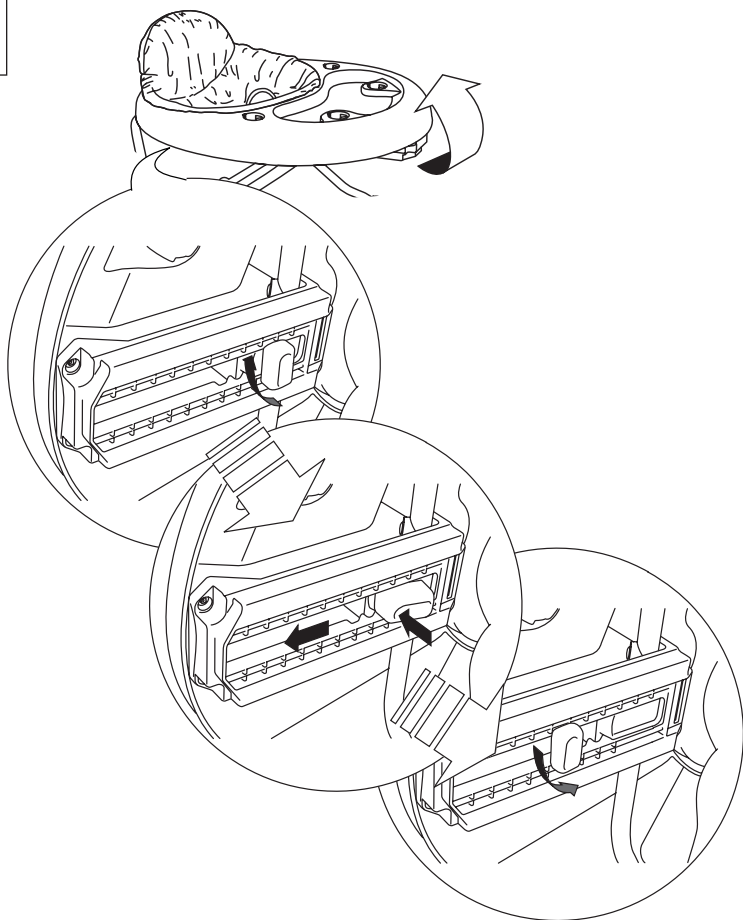
4



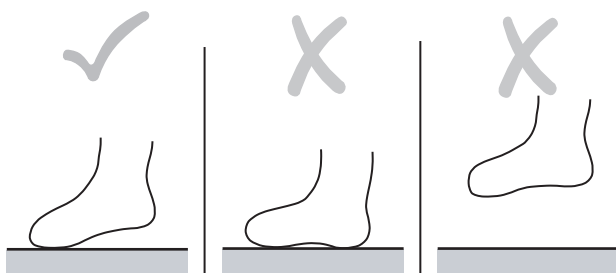


# Adjusting the Seat Height

1



2



# Care and Cleaning

---

EN

**Seat pad** – Remove from frame. Machine wash with cold water, gentle cycle. No bleach. Tumble dry, low heat.

**Plastic Parts** – Wipe clean with damp cloth and mild soap. Air dry. Do not immerse in water.

**Frame** – Wipe the metal frame with soft, clean cloth and mild soap.

# Storage

---

