

CHAD VALLEY BABY™

Circus Friends™

585/6280

Door Bouncer



IMPORTANT! KEEP FOR FUTURE REFERENCE.

Argos
Avebury, 489-499 Avebury Boulevard, Milton Keynes, MK9 2NW
www.argos.co.uk
Customer Helpline: 03456 400 800



IMPORTANT SAFETY INSTRUCTIONS

WARNING

TO PREVENT SERIOUS INJURY OR DEATH:

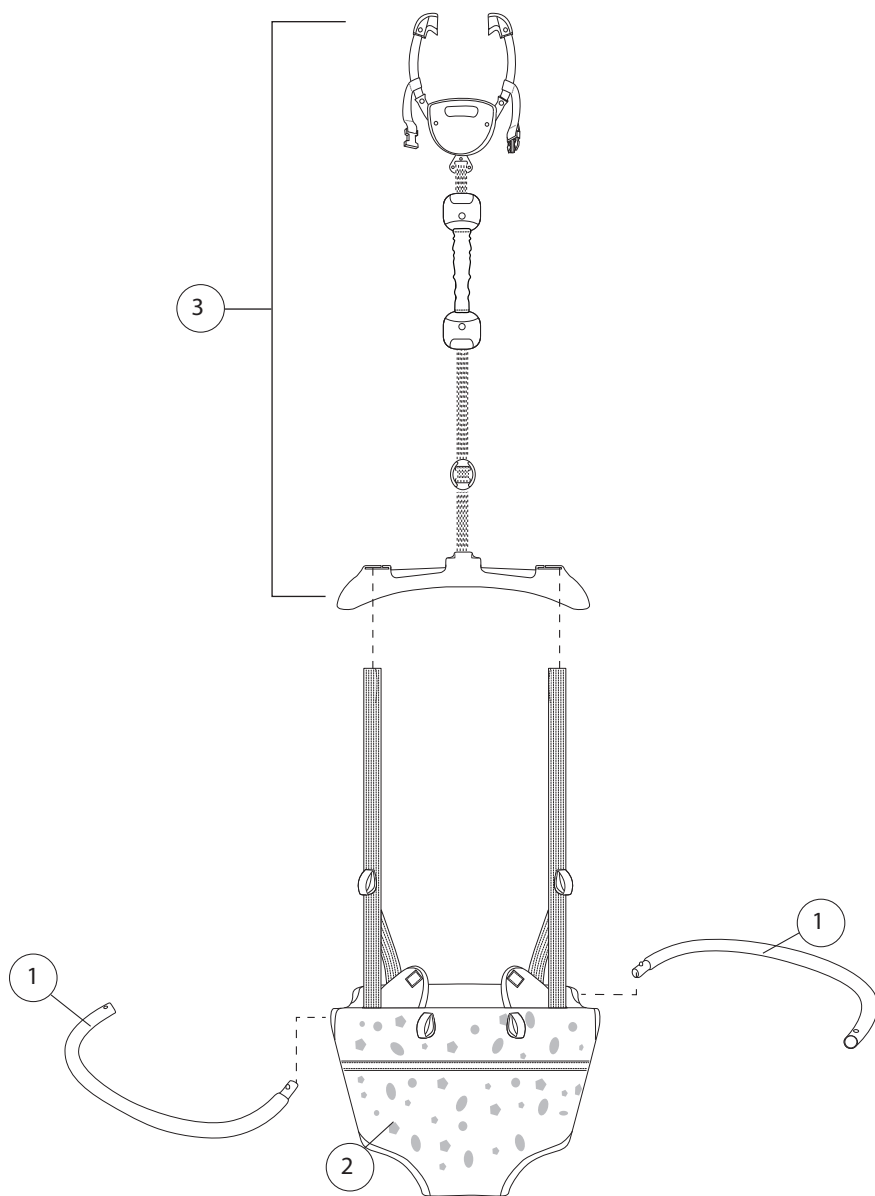
- Use the door bouncer only if the child meets ALL of the following conditions:
 - Can sit up by himself or herself (approximately six months of age)
 - Weighs less than 26 lbs (12 kg).
- Only use the product on a recommended interior door frame.
 - Ensure that the product is properly secured in the center of the door frame before each use
 - Only use for a wall thickness between 4 - 5" (10.2 - 12.7 cm) and with a trim thickness of at least .5" (13 mm).
 - Do not secure to the door trim.
- Never leave child unattended. Always keep child in view while in the door bouncer.
- Ensure that the child is correctly and safely positioned in the door bouncer.
- Allow child to use the door bouncer only for short periods of time (20-minute intervals).
- Do not use the product as a swing.
- Ensure that door cannot close on the door bouncer.
- It can be dangerous to allow other children to play near the door bouncer.
- Do not add additional strings or straps to product.
- Strings can cause strangulation! DO NOT place items with a string around child's neck such as hood strings or pacifier cords. DO NOT suspend strings over product or attach strings to toys.

IMPORTANT

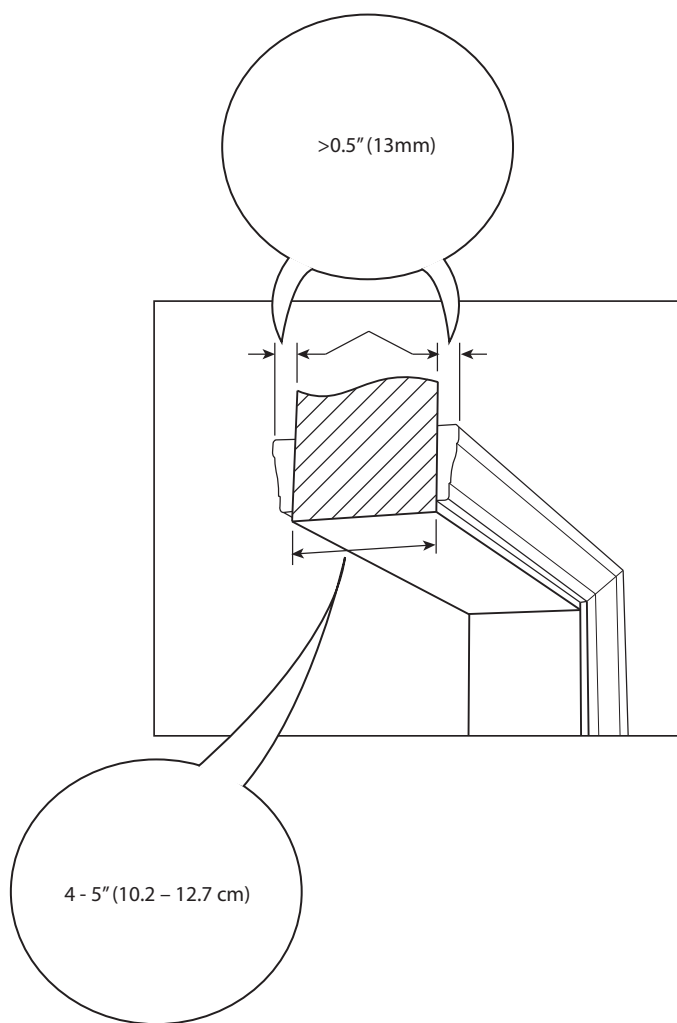
- Adult assembly required.
- Please read all instructions before assembly and use of the door bouncer.
- Care should be taken in unpacking and assembly.
- Examine product frequently for damaged, missing, or loose parts.
- Do not use product if damaged or broken.

Parts List and Drawing

No.	Qty.	Description
1	(2)	Frame half
2	(1)	Fabric seat & webbing
3	(1)	Clamp and Height Adjustment Assembly

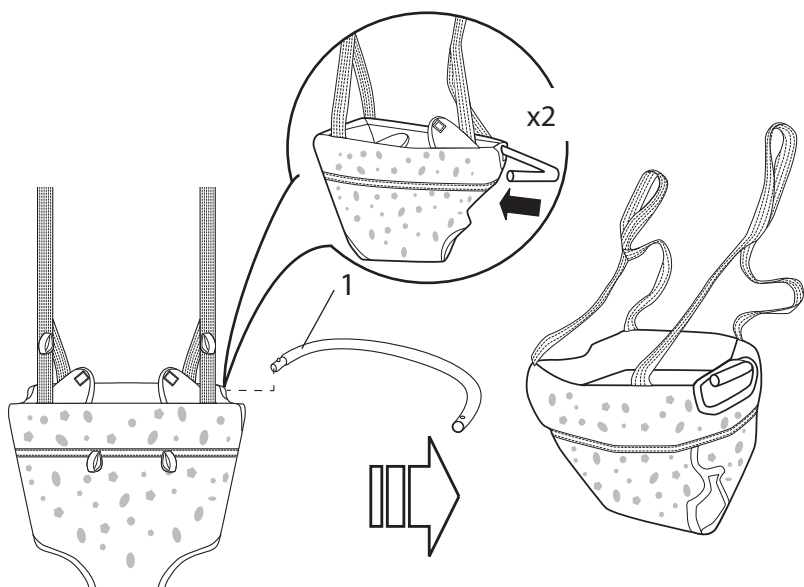


1

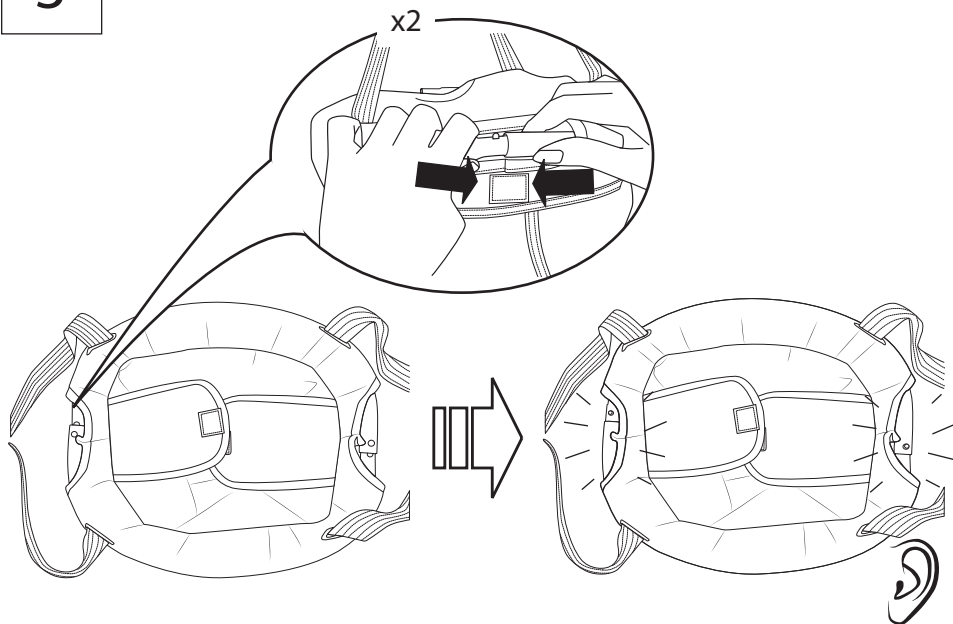


2

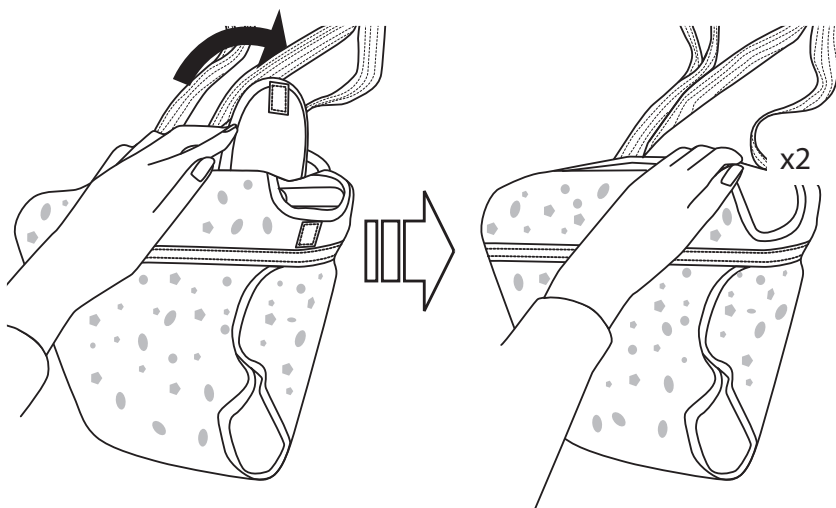
★ When item #1 is pre-inserted, skip this step.



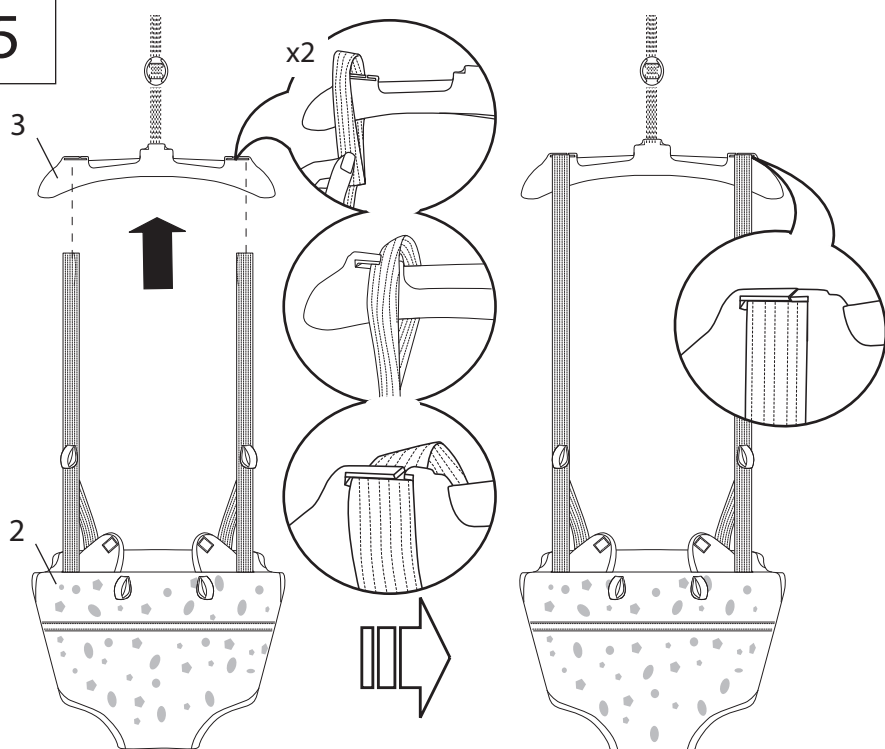
3

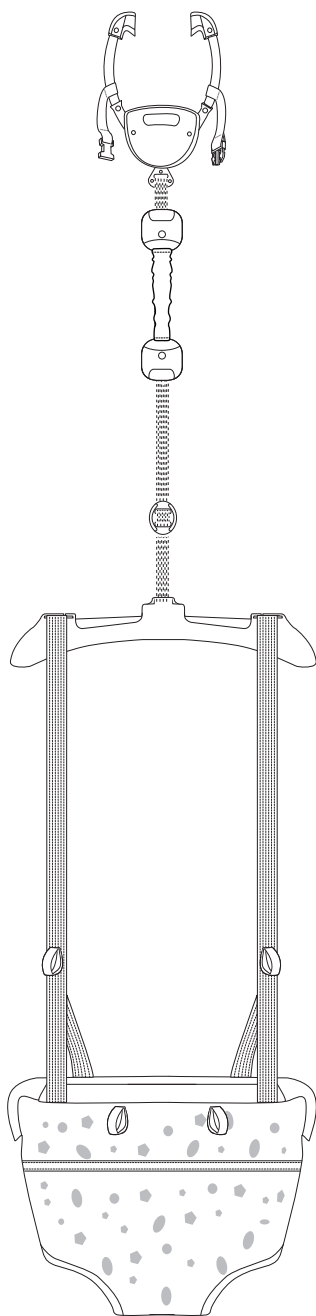


4



5

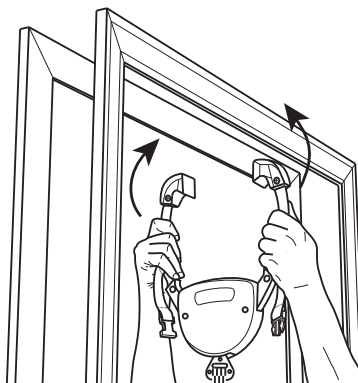




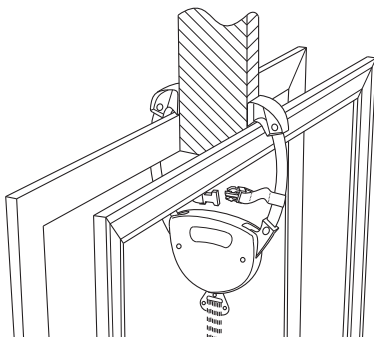
Operating Instructions

Mounting the Door Bouncer

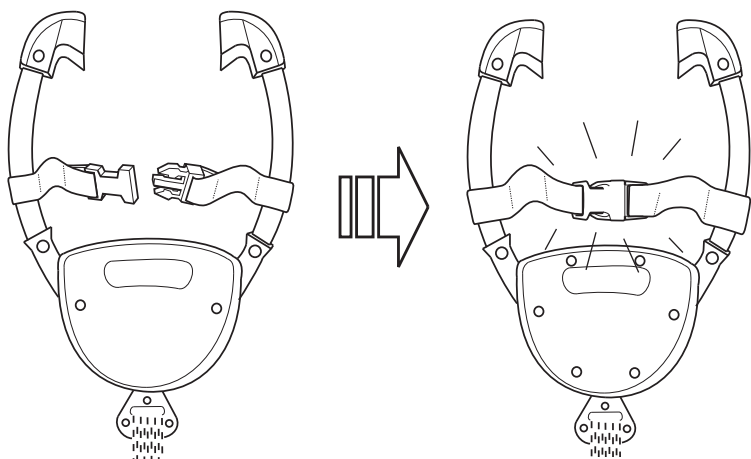
1



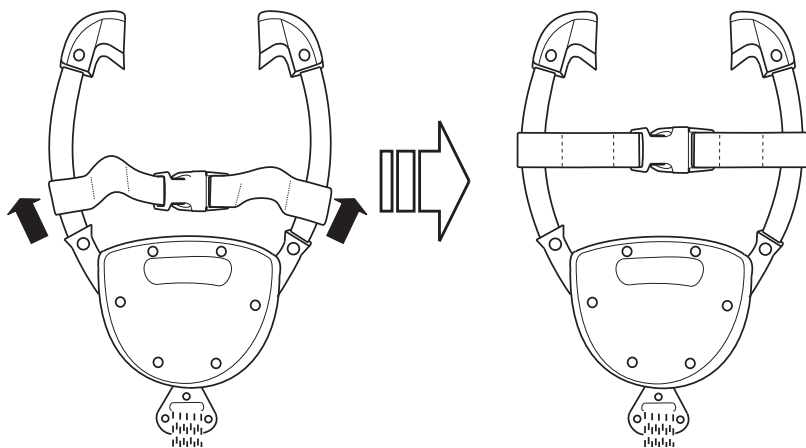
2



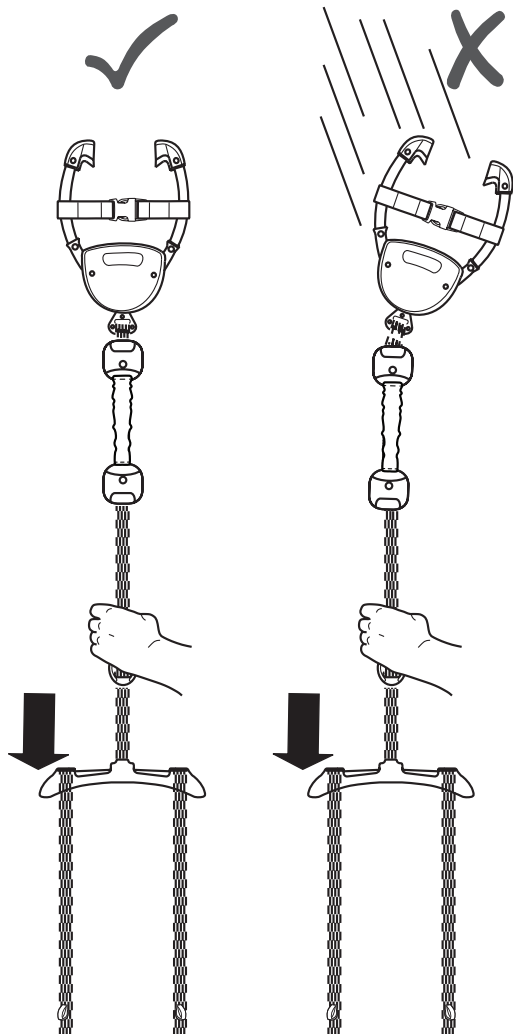
3



4

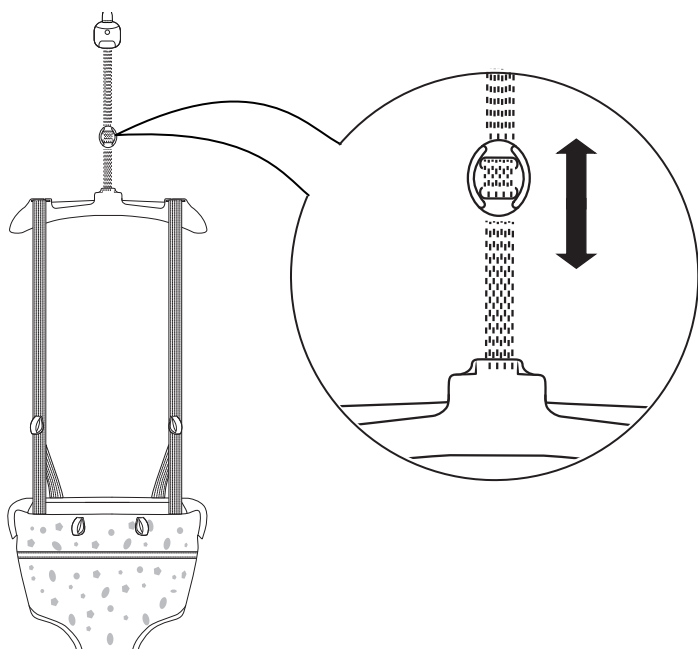


5

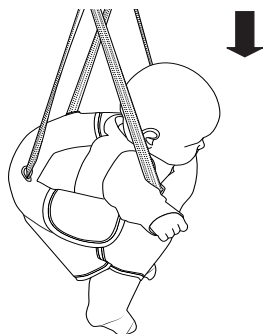


Adjusting the Seat Height

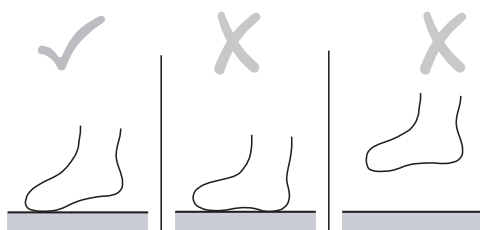
1



2



3



Care and Cleaning

EN

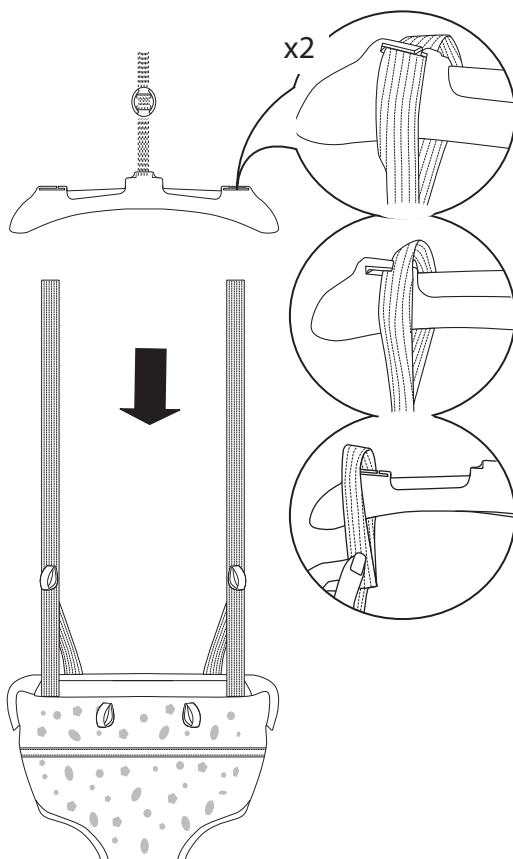
Fabric Seat – First, you must remove the fabric seat and frame halves.

To wash the fabric seat... Machine wash the fabric seat in cold water. Use a gentle wash cycle with no bleach. Air dry flat.

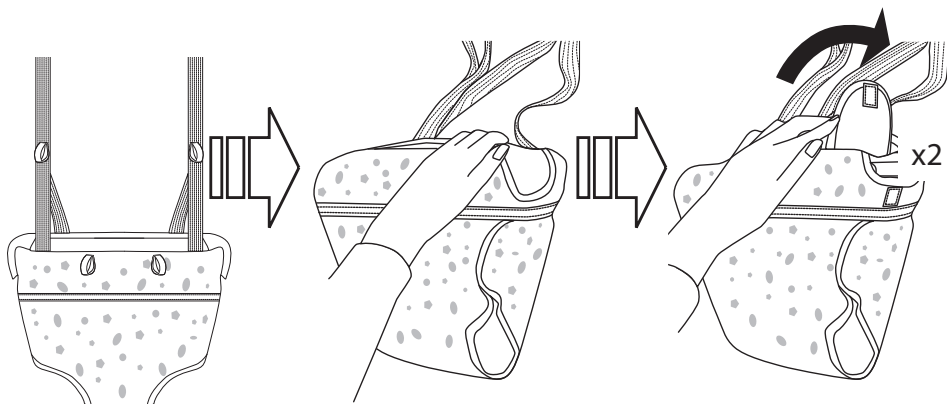
Frame– Wipe clean with damp cloth and mild soap. Air dry. Do not immerse in water.

Removing Fabric seat & webbing

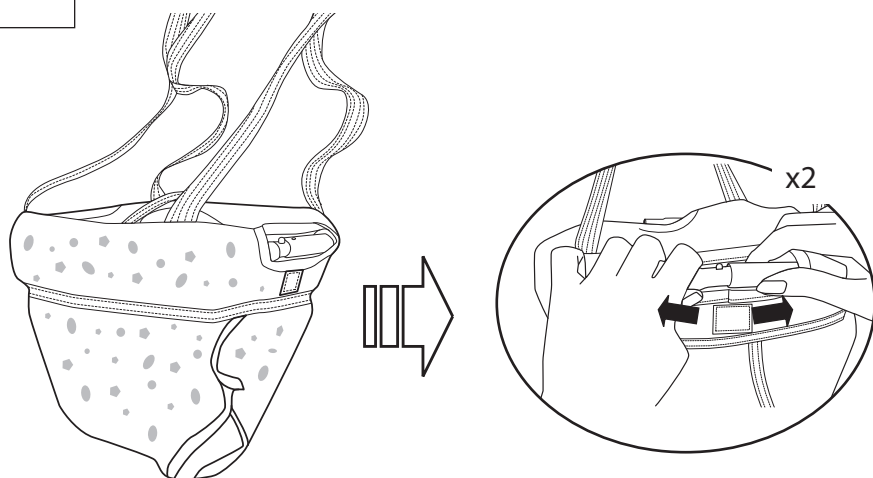
1



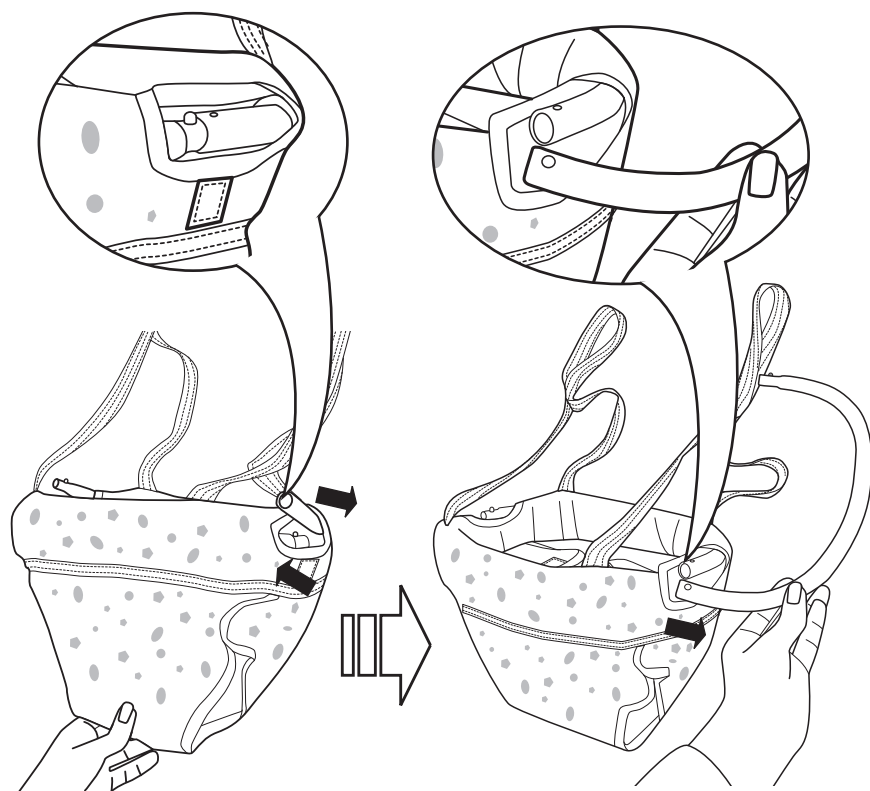
2



3



4



5

