

3+
YEARS

TOOLS
Screwdriver
Spanner
Not included.

6V Chase's Cruiser

Important owner's information

This product must be assembled by an adult.
Before the first use, the rechargeable battery should be connected.
Before the first use, the battery should be recharged for 8-10 hours.
This charger is not a toy.
The rechargeable battery is only to be charged by an adult.
Do not allow children to play with the charger or to recharge the battery.
Turn the main switch off when charging.
Never charge for more than 15 hours, as this will shorten the battery lifetime.
It is normal for the charger to feel warm during charging, but if the charger feels very hot, stop charging, unplug the charger and carefully check the battery and charger.
Fully charge the ride-on before storing this product for a long period.
Recharge the product every 3 months when not in use to prolong the battery lifetime.
Examine the charger regularly for damage to cord, plug, enclosure and other parts. If such damage is found, stop using the charger until it is repaired.
Replacement rechargeable batteries are available at a small fee, please contact customer services for prices and availability.
Non-rechargeable batteries are not to be recharged.
Different types of batteries or new and used batteries are not to be mixed.
Only batteries of the same or equivalent type as recommended are to be used.
Batteries are to be inserted with the correct polarity.
Exhausted batteries are to be removed from the toy.
The supply terminals are not to be short-circuited.
Charging time: 8-10 hours
Estimated "playtime": 60 minutes
Estimated battery lifetime: 1 year
Number of recharge: up to 200 times

WARNINGS:

Not suitable for children under 3 years. Small part. Choking hazard.
Not for children with a body weight over 20kg. Only one child at a time.
Protective equipment should be worn. Not to be used in traffic
MV recommends the use of a protective helmet when using this product.
It is dangerous to use this ride-on in areas other than private grounds.
Only use the toy on flat surfaces. For use inside the house, garden or playground.
Not for use on busy streets, roads or highways.
Never use near swimming pools or other bodies of water.
Never ride in the dark or dimly lit areas. Never ride in hilly areas or on steep slopes.
Fasten seat belt when using this product
This vehicle was made to operate on dry level ground.
Never change the forward/backward suddenly while the ride-on is in use. Switch the direction when the ride-on has come to a halt.
Parents should teach the child how to use the product properly.
Adult supervision is required for young children.
This toy should be used with caution since skill is required to avoid fall or collision causing injury to the user or third parties
Correct assembly of the toy is vital. Incorrect assembly can cause harm to the child. Please check the product before each use.
Clean the vehicle with damp cloth only and never submerge the vehicle in water or spray vehicle with water from a hose.
Waste electrical products and batteries should not be disposed of with household waste.
Separate disposal facilities exist, for your nearest facilities, see www.recycle-more.com.uk

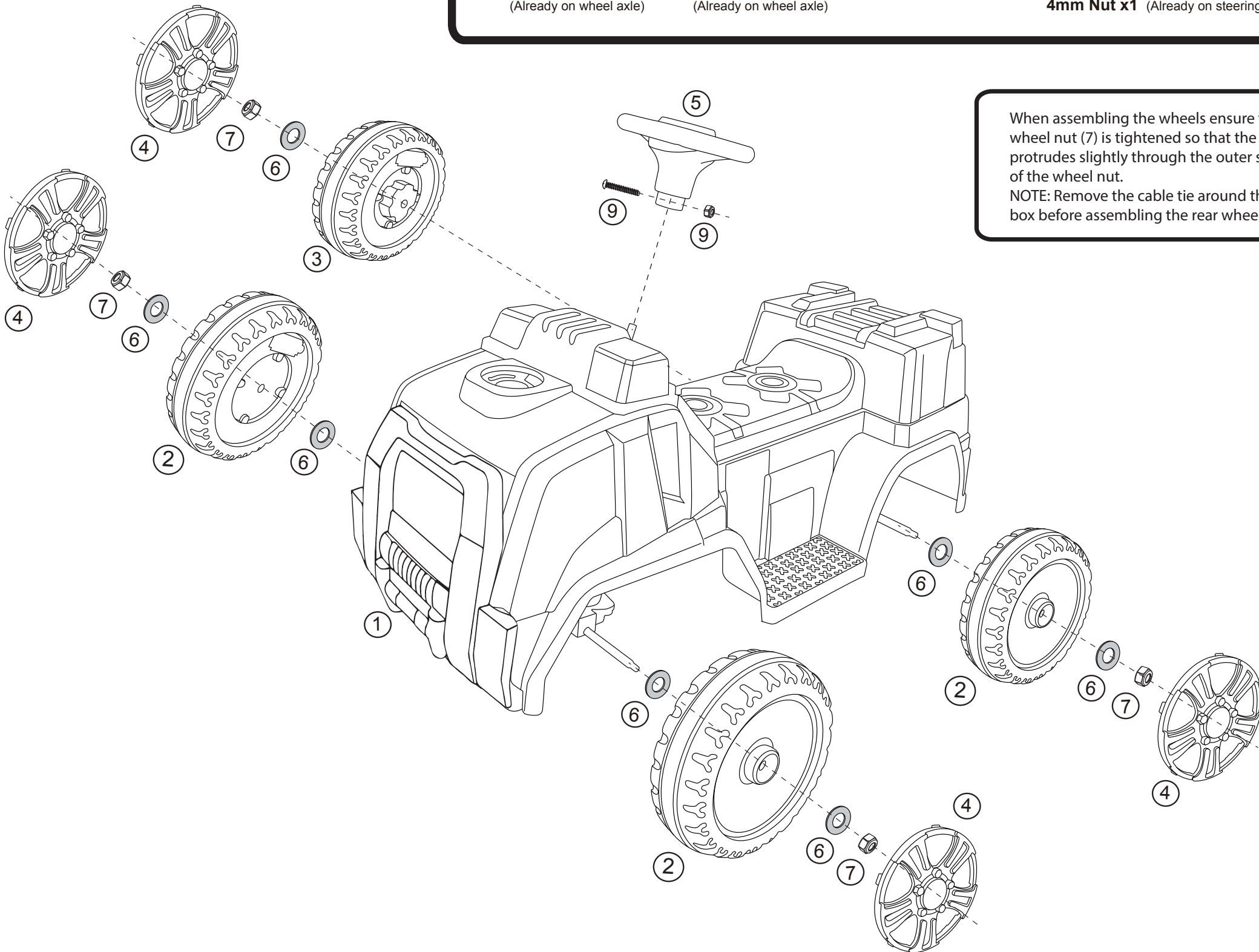
CUSTOMER HELPLINE

MV has taken great care to ensure that this product has reached you in good condition. Should you have a query, please contact:
customer.services@mvsports.com
where your query will be dealt with promptly.
Alternatively, you can call on 0870 8404255.



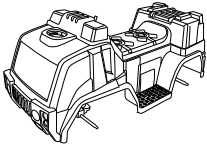
MV SPORTS & LEISURE LTD
35 Tameside Drive • Castle Bromwich
Birmingham • B35 7AG • UK
www.mvsports.com

Assembly Diagram



When assembling the wheels ensure that the wheel nut (7) is tightened so that the axle protrudes slightly through the outer surface of the wheel nut.
NOTE: Remove the cable tie around the gear box before assembling the rear wheels

CONTENTS:



1. Vehicle Body x1



2. Wheel x3



3. Driving Wheel x1



4. Wheel Inner x4



5. Steering Wheel x1



6. 10mm Spacer x7
(Already on wheel axle)



7. 8mm Nut x4
(Already on wheel axle)



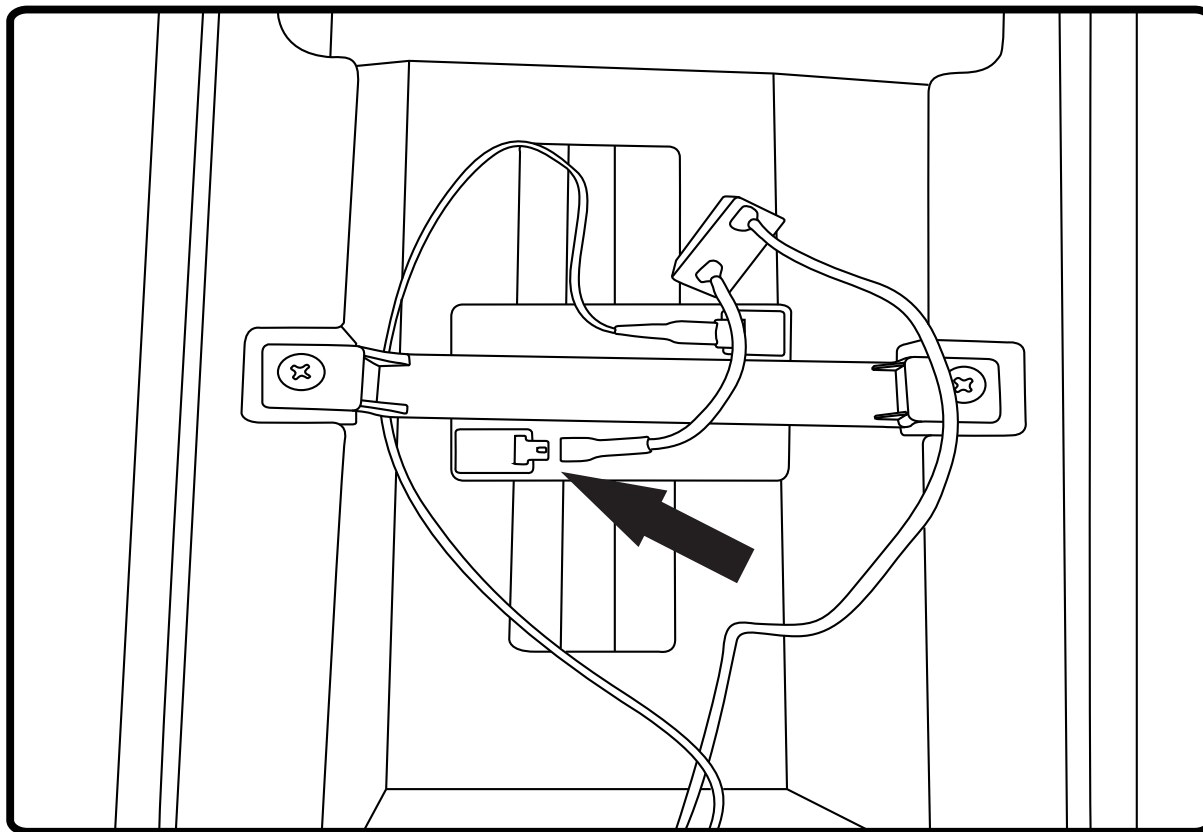
8. Charger x1



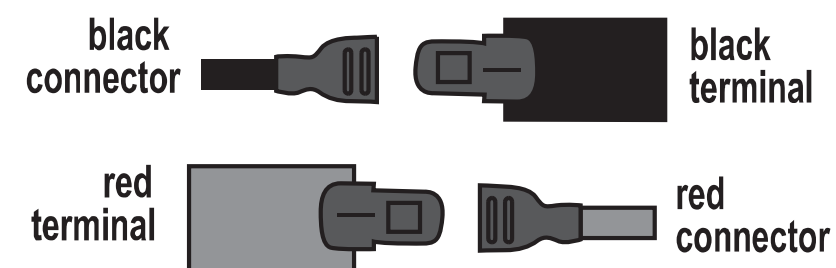
9. Machine Screw & 4mm Nut x1
(Already on steering wheel)

Installation of Power Supply

Connecting the battery



While connecting the connectors to the storage battery take care they are connected in correct polarity.



THE VEHICLE IS SHIPPED WITH THE BATTERY AND MOTOR UNPLUGGED. THE RED CABLE MUST BE ATTACHED TO THE RED TERMINAL BEFORE THE FIRST USE.

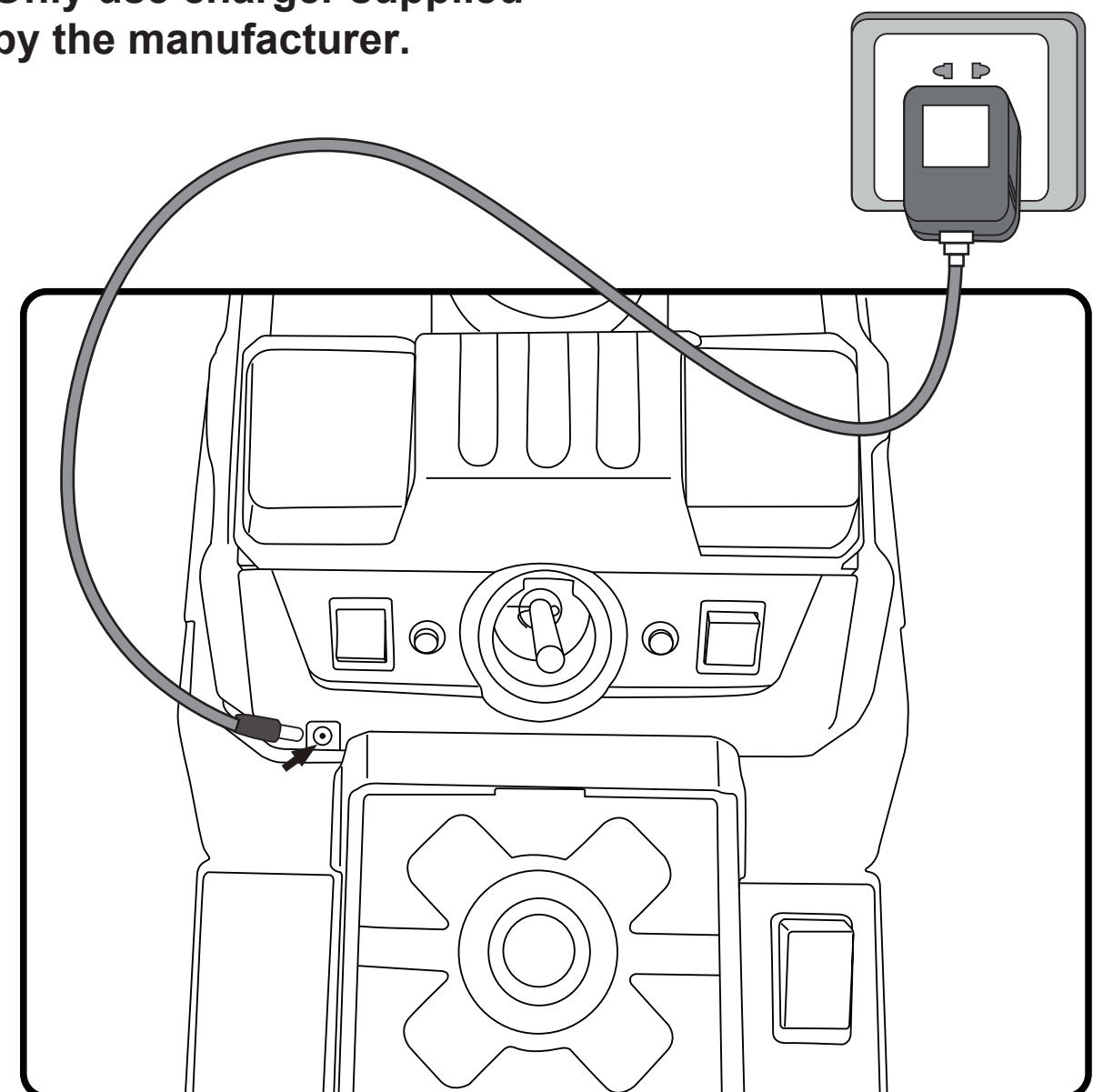
1. Unscrew and remove the seat.
2. Connect the battery.
3. Replace the seat and tighten back with the screw.

Charging the Battery

1. Turn the main switch off
2. Insert the DC plug of the charger to the socket located under the front edge of the seat.
3. Plug the charger to the AC supply.
4. Charge for 8-10 hours.
(Do not charge for more than 15 hours)

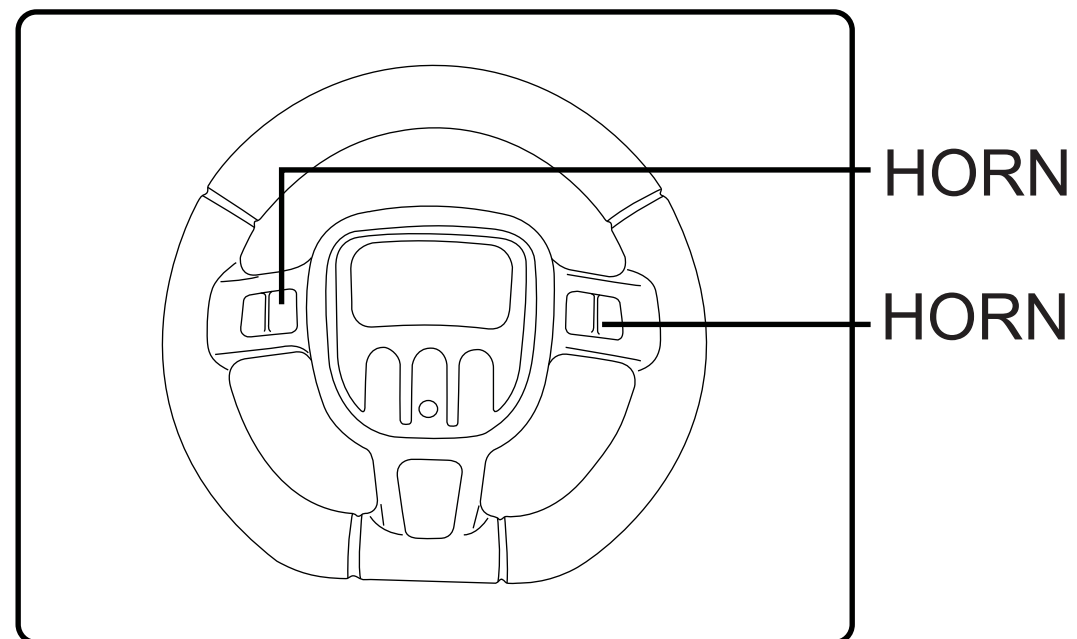
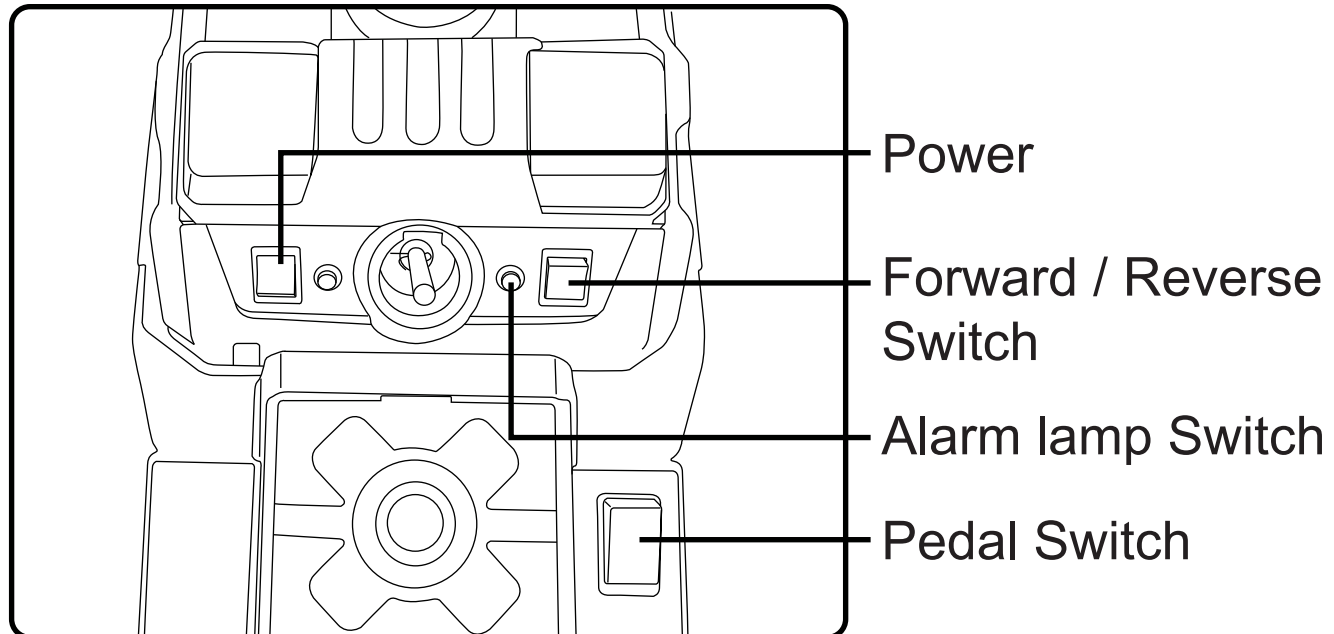
WARNING

Only use charger supplied by the manufacturer.



Operation instructions

1. Turn on the power switch
2. Select the direction by switching the Forward/Reverse switch
3. Press the foot pedal to start moving. Release the foot pedal to stop
4. Press the alarm button or the horn button as you want



Troubleshooting

If the vehicle does not move make sure:

The battery is connected.

Ensure the power switch is on and the direction stick is in either "forward" position or "reverse" position.

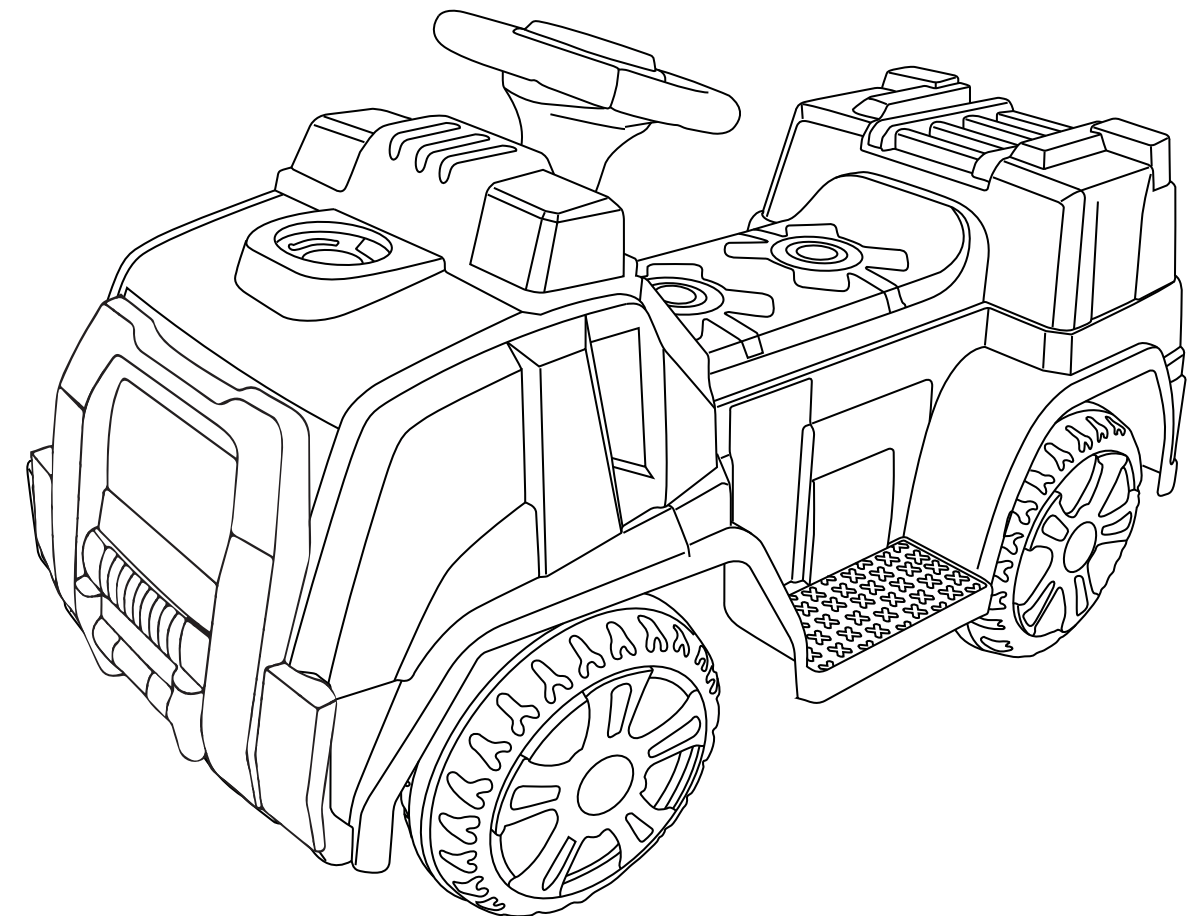
If motor slows down or stops – this may be due to low battery. Recharge the battery for 8-12 hours.

If playtime significantly decreases even after fully charge, the battery may be over its life. Replace with new battery.

CAUTION:

Your ride-on vehicle is equipped with a built-in thermal circuit breaker. The thermal circuit breaker is a self-resetting safety device which automatically "trips" and shuts down the operation of the vehicle if it becomes overloaded or the driving conditions are too severe. Once the circuit breaker has tripped it will automatically reset itself after approximately 25 seconds and allow the rider to resume normal operation.

Assembled Vehicle



Please retain this leaflet for reference to the manufacturer.
Carefully made in China to European Safety Standards.



This mark denotes compliance with the standards laid down by the EC (European Community).

