

# REVITIVE<sup>®</sup>

CIRCULATION BOOSTER<sup>®</sup>

CLINICALLY  
TESTED   
DRUG FREE | CLASS IIa  
MEDICAL  
DEVICE

## User's Manual (EN)

# MEDIC



**PLEASE READ THE USER'S  
MANUAL CAREFULLY BEFORE  
USING THIS PRODUCT**

**USE ONLY AS DIRECTED**

If symptoms persist, consult  
your healthcare professional

Model number RMEDIC

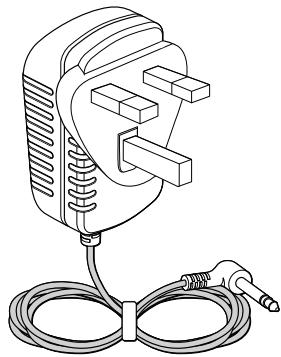
# Table of contents

<b>What is inside the box?</b>	4
<b>Parts and Controls</b>	5
<b>Introduction to REVITIVE Medic</b>	6
Indications for use	6
How REVITIVE Medic works	7
<b>Important Safeguards</b>	8
Contraindications	8
Warnings, Risks and Cautions	8-11
<b>Instructions for use</b>	12
How long should I use REVITIVE Medic?	12
Step 1: Setting up REVITIVE Medic for the first time	12
Step 2: Setting up the IsoRocker	13
Step 3: Powering REVITIVE Medic	14-15
Step 4: Using the foot pads	16-18
Step 5: Using the body pads	19-23
Step 6: Recharging the battery	24
Step 7: Cleaning and storing	25
Replacing the batteries & body pads	25
<b>Troubleshooting</b>	26-28
<b>Technical Specifications</b>	28-29
<b>Warranty</b>	30-31

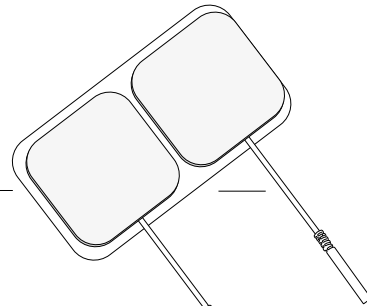
## What is inside the box?

On opening the carton, please check that the following components are provided. If you think anything is missing, please contact us using the helpline numbers on the back of this booklet.

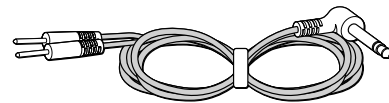
**A** AC/DC power adaptor



**C** Electrode Body Pads



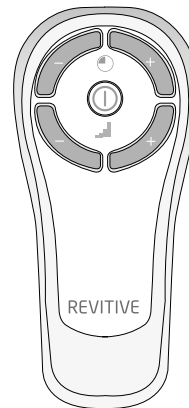
**D** Body pad cord



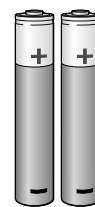
**B** REVITIVE Medic



**E** Remote control

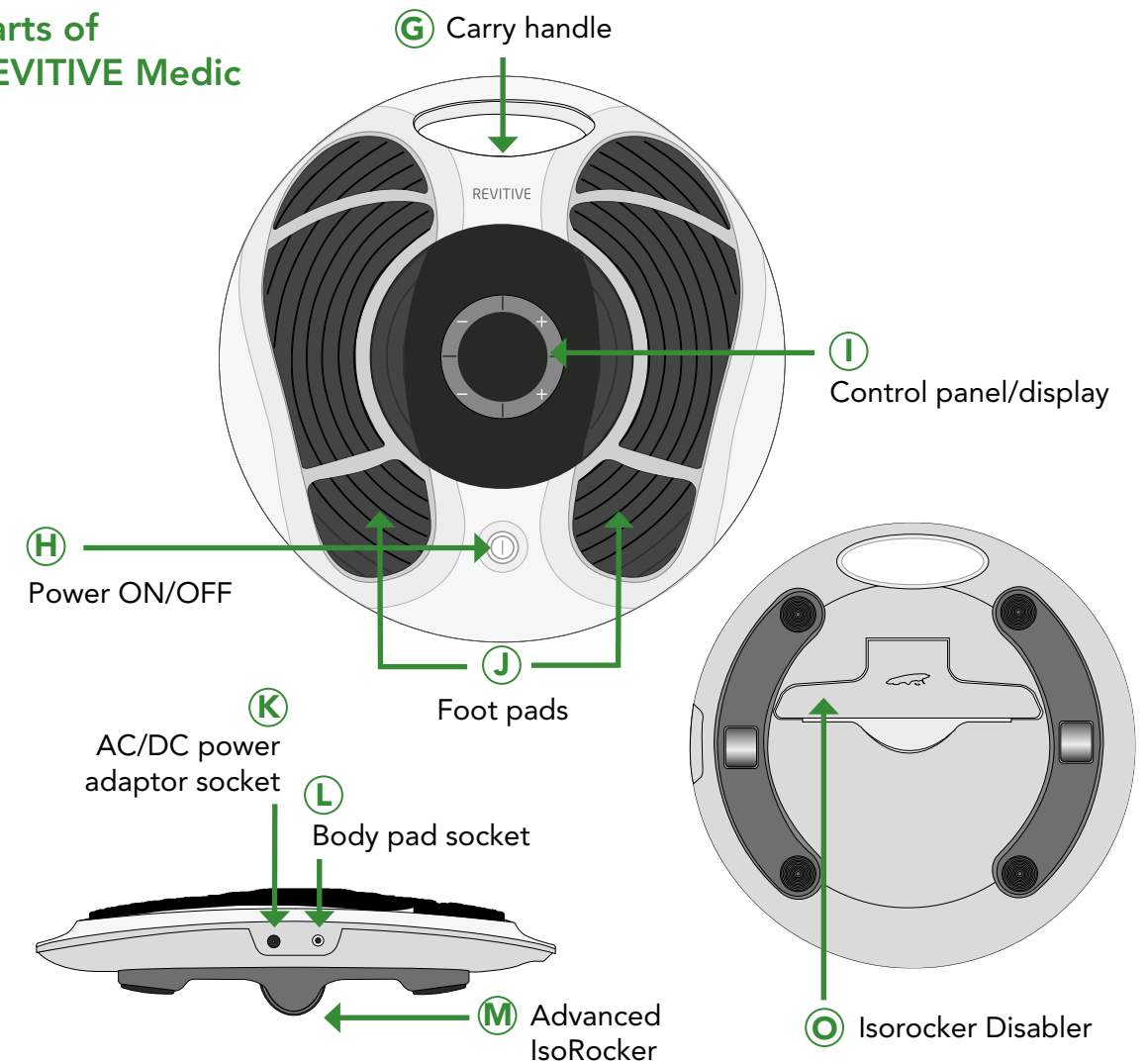


**F** AAA batteries x 2

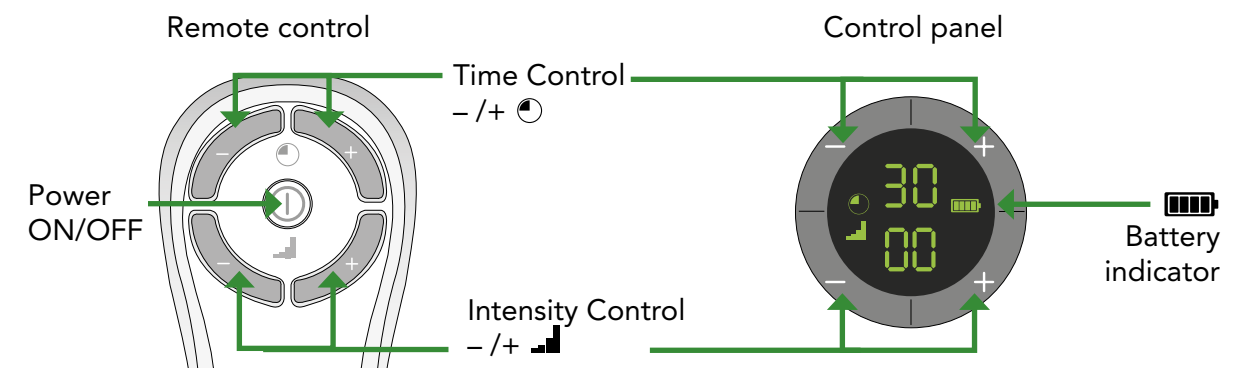


## Parts and Controls of REVITIVE Medic

### Parts of REVITIVE Medic



### Controls of REVITIVE Medic



# Introduction to REVITIVE

## INDICATIONS FOR USE

### REVITIVE Medic is intended to:

- Reduce swelling in the legs/ankles/feet - caused by being immobile due to osteoarthritis or an injury
- Improve circulation to reduce or prevent blood-pooling (stasis) - caused by diabetes or by being immobile following surgery
- Reduce pain and discomfort in the legs/ankles/feet - caused by diabetic peripheral neuropathy or swelling (oedema) due to osteoarthritis or following surgery
- Increase muscle strength to help regain mobility in the legs affected by being immobile due to COPD, osteoarthritis or following surgery.
- Help maintain leg vein health - by increasing circulation, delivering more oxygenated-blood and reducing swelling (oedema) in the legs, feet & ankles.

The above Indications for Use are certified by SGS United Kingdom Limited NB0120 under the Medical Devices Directive 93/42/EEC

In addition, if you have a sedentary lifestyle or spend long periods inactive, REVITIVE MEDIC may help to:

- Reduce foot & leg pain
- Reduce diabetic peripheral neuropathic pain
- Reduce swollen feet & ankles
- Relieve leg cramps
- Strengthen leg muscles
- Actively increase circulation

## HOW REVITIVE WORKS

REVITIVE delivers Electrical Muscle Stimulation (EMS) to your feet via a pair of cushioned foot pads, while you are seated. The electrical stimulation causes muscles in your calf and foot to contract, which helps to increase circulation in your legs.

REVITIVE MEDIC has been developed so that it is comfortable for you to use. It features an IsoRocker (patent pending) that allows for natural ankle movement when applying the electrical stimulation to your feet. Ankle movement is a key factor in increasing circulation in the lower legs. You can choose to enable or disable the IsoRocker at any time.

REVITIVE MEDIC is designed to be easy to use and comes with a remote control, which means you do not have to reach down to adjust settings during use.

REVITIVE MEDIC can also deliver Electrical Muscle Stimulation to the knees, shoulders, back or arms through the use of the Electrode Body Pads provided.

**Visit [www.revitive.com](http://www.revitive.com) for more information**

# IMPORTANT SAFEGUARDS

## READ ALL INSTRUCTIONS BEFORE USE

### WHO SHOULD NOT USE REVITIVE

REVITIVE should **not** be used by some people.



#### Do not use if (contraindications):

- Fitted with an electronic implanted device such as a heart pacemaker or Automatic Implantable Cardioverter Defibrillator (AICD)
- You are pregnant
- Being treated for, or have the symptoms of, an existing Deep Vein Thrombosis ("DVT")

Long periods of inactivity can put you at greater risk of developing Deep Vein Thrombosis (DVT). DVT is a blood clot and usually occurs in a deep leg vein. If part of the DVT breaks off it may lead to potentially life-threatening complications such as pulmonary embolism.

If you have been inactive for prolonged periods and suspect you may have a DVT, consult your doctor immediately. To prevent dislodging the clot do not use REVITIVE.

In some cases of DVT there may be no symptoms. However it is important to be aware of the symptoms that may include:

- pain, swelling and tenderness in one of your legs (usually your calf)
- a heavy ache in the affected area
- warm skin in the area of the clot
- redness of your skin, particularly at the back of your leg, below the knee

Consult your doctor as soon as possible if you show any signs of the above symptoms.



#### Warnings

- If you have a history of heart problems, consult your doctor before using this device.
- If you are unsure about the suitability of the REVITIVE Medic for you or unsure about the cause of your symptoms, you should consult with your doctor before use.
- Do **not** use the body pads on your head, face, neck or chest.
- Do **not** apply foot pads or body pads directly:
  - on open wounds or rashes, swollen, red, infected, or inflamed areas or skin eruptions (such as phlebitis, thrombophlebitis, varicose veins, cellulitis)
  - on or close to, malignant tumours
  - on areas treated with radiotherapy (within the past 6 months)
  - on reproductive organs
- Do **not** use body pads after their expiration date.
- There is a chance you may experience skin irritation or burns beneath the stimulation electrodes or hypersensitivity due to the electrical stimulation.
- If you experience adverse reactions, stop using REVITIVE Medic and talk with your doctor.

# IMPORTANT SAFEGUARDS

## Cautions

Be careful when applying stimulation:

- over areas of skin that lack normal sensation - be careful not to overstimulate the area.
- over the abdomen during menstruation.
- after recent surgical procedures as stimulation may disrupt your healing process.
- if you are likely to bleed internally, such as following an injury or fracture – use a low intensity and/or shorter time to avoid over-stimulation.
- after a long period of immobility or inactivity – use a low intensity and shorter time to avoid overstimulation or muscle fatigue.

This product is not intended for use by persons with reduced physical, sensory or mental capabilities, unless they are supervised by a person responsible for their safety.

## Safety Precautions

- **Do not stand on the machine. Use only when sitting down.**
- Use the device only for its intended purpose.
- Do not expose the device to extreme heat.
- Do not spill liquid on the device or its accessories.
- Do not overload the electrical outlet.
- Not suitable for use by children.

- Use the REVITIVE Medic only with the accessories supplied by, or purchased from, the manufacturer.
- Do not open the REVITIVE Medic or repair it yourself. This will invalidate your warranty and may cause serious harm.
- In the unlikely event your REVITIVE malfunctions, disconnect it from the power source and contact your nearest authorised agent.
- It has been reported that some universal remote control devices (eg for TV etc) can change the settings on REVITIVE if used during a treatment. If this should occur, simply adjust the time or intensity settings on REVITIVE back to where you want them to be using the REVITIVE Remote Control, or using the device Control Panel.
- After any exposure to hot or cold temperatures outside the specified operating range of 10 – 40°C allow the product to re-adjust to the recommended operating temperatures to ensure continued product performance.

**SAVE THESE INSTRUCTIONS**



## How long should I use REVITIVE?

It is recommended to use REVITIVE Medic for 20-30 minutes per day.

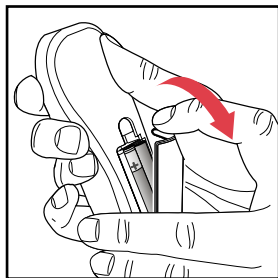
Do not use REVITIVE Medic more than 6 sessions of 30 minutes (or the equivalent) per day. This may result in muscle fatigue.

## STEP 1: SETTING UP REVITIVE FOR THE FIRST TIME

### a Remove all parts from the box:

- AC/DC power adaptor
- REVITIVE Medic device
- Body pads
- Body pad cord
- Remote control
- AAA batteries x 2

See What is inside the Box? on pages 4-5 to help identify the parts.



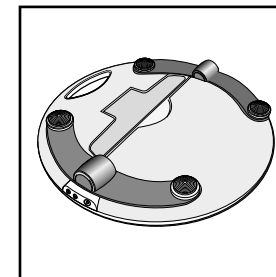
### b Locate the remote control and insert the batteries.

Before you use REVITIVE Medic for the first time, read the Warnings and Cautions on pages 8-11. If in doubt, consult your doctor before using the product.

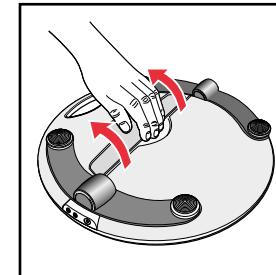
## STEP 2: SETTING UP THE ISOROCKER

### a Turn the device over so that you can see the IsoRocker and IsoRocker Disabler.

- The IsoRocker allows REVITIVE Medic to rock while stimulating your legs and feet.
- REVITIVE Medic will begin rocking on the IsoRocker once muscle contractions are strong enough.
- When the IsoRocker feature is disabled, by opening the IsoRocker Disabler, REVITIVE Medic will be inclined and not rock during use.

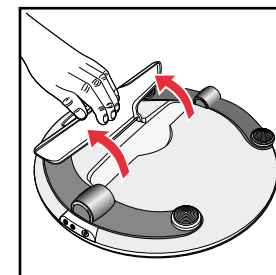


### b If you **want to use the IsoRocker**, leave the IsoRocker Disabler in place (ie flat) on the bottom of the device, as shown.

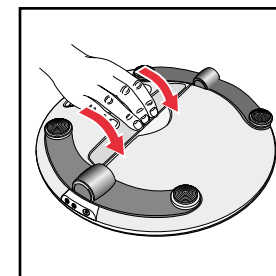


### c If you **do not want to use the IsoRocker**

- Pull the IsoRocker Disabler on the bottom of REVITIVE Medic. You may have to pull hard.



- Pull the IsoRocker Disabler back until it clicks open, as shown.



- To re-enable, pull the IsoRocker Disabler and press into place (ie flat) on the bottom of REVITIVE Medic.



# Instructions for use

## STEP 3: POWERING REVITIVE MEDIC

REVITIVE Medic can be powered from either the rechargeable battery or by connecting it to an electrical socket.

### BATTERY POWER OPTION

If you want to use the device without connecting it to an electrical socket, it can run from the battery.

When the device is running from the battery, an indicator will show the remaining battery level.



Follow Step 4 Using The Foot Pads or Step 5 Using the Electrode Body Pads to continue setting up REVITIVE Medic.

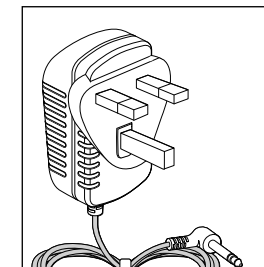
When the battery drops to the low level, it will require recharging.  
See Step 6, Recharging Battery on page 24

If you turn the device off and the low battery level indicator blinks for 10 seconds, the battery requires recharging.

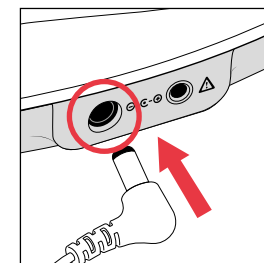
**Please note that if the battery runs out, the device can still be used, by connecting to an electrical socket.**

### MAINS POWER OPTION

If you want to use the REVITIVE Medic when the battery is low or to preserve the battery level the REVITIVE Medic can be used by connecting it to an electrical socket.



**a** Locate the AC/DC power adaptor.



**b** Plug the small end of the power cord into the opening on the side of the REVITIVE Medic.

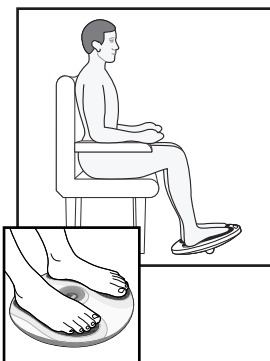
**c** Plug the power adaptor into the nearest electrical socket. This will start charging the (integrated) rechargeable battery.

Once you have connected REVITIVE to the electrical socket follow Step 4 Using The Foot Pads or Step 5 Using the Electrode Body Pads to continue setting up REVITIVE Medic.



## STEP 4: USING THE FOOT PADS

**Sit with  
both bare feet  
on the foot pads**



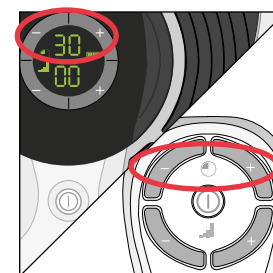
- a** Get into a comfortable seated position.  
For best results sit with your knees at a 90 degree angle (right angle).
- b** Place REVITIVE Medic on the floor in front of you.

REVITIVE Medic is designed to be used while seated.  
**Never stand on the REVITIVE unit.**

- c** Place both bare feet on the foot pads.  
Make sure you remove all footwear, including socks/ stockings.
- d** If desired, apply a moisturising lotion to the soles of your feet.

*Hint: Applying a moisturising lotion to the soles of the feet before using REVITIVE Medic can help improve the delivery of electrical stimulation.*

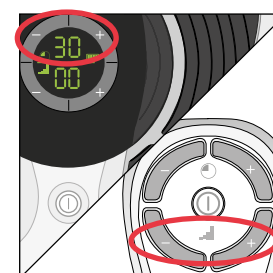
- e** Press the power button on the device **or** on the remote control to turn REVITIVE Medic on.  
You will hear a beep and the display lights will light up. The ⌚ time will read 30 minutes and 📶 Intensity will read 00.  
To turn off REVITIVE Medic at any time during operation, press the power button on the device or on the remote control.



- f** Set the time for REVITIVE Medic. The default time is 30 minutes. You can set the timer for up to 60 minutes. If you do not want to use the default time of 30 minutes, set the time for the number of minutes you want.  
You can use the controls on the control panel **or** on the remote control.  
Press the ⌚ (+) Time Control to increase the time.  
Press the ⌚ (-) Time Control to decrease the time.

NB It is recommended to use REVITIVE Medic for 20-30 minutes per day.

Do not use REVITIVE Medic more than 6 sessions of 30 minutes (or the equivalent) per day. This may result in muscle fatigue.



- g** Press the 📶 (+) Intensity Control, one time, to start stimulation.  
Continue to increase the intensity until you can feel or see the muscles in your calves contract and relax. You can set the intensity between 1-99.  
You can use the buttons on the device **or** remote control.  
Press the (+) button to increase the level.  
Press the (-) button to decrease the level.

# Instructions for use

- h** Use an intensity that provides you with strong but comfortable muscle contractions and note that the intensity required may vary from day to day - eg using it on 25 one day, does not necessarily mean you will need to use it at 25 the next day. The required intensity could be higher or lower than previous usage.

It is normal to feel tingling or varying sensations in your calf muscles.

If you feel pain or discomfort:

- Remove one or both feet from the foot pads to stop the stimulation.
- Lower the intensity of the foot pads using the ▬ (-) Intensity Control on the control panel, or remote control, before replacing your feet on REVITIVE Medic.

REVITIVE Medic does not vibrate.

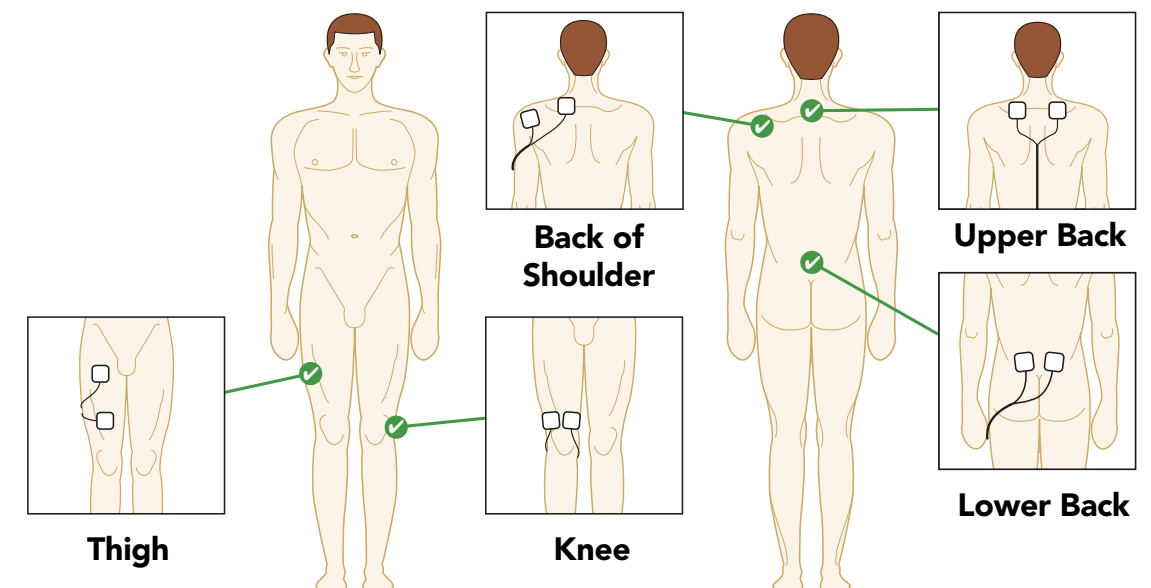
- h** The ⌚ Time Display will start to count down in minutes as REVITIVE Medic cycles through its program.
- i** When REVITIVE Medic times out, the ⌚ Time Display reads 00 and you will hear three beeps.
- j** The REVITIVE Medic switches itself off automatically.

## STEP 5: USING THE ELECTRODE BODY PADS

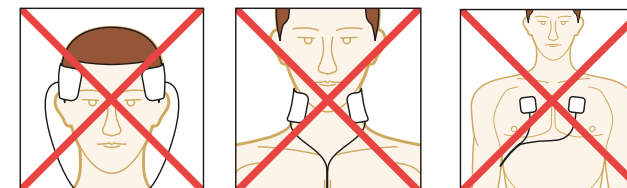
REVITIVE Medic comes with one pair of reusable (up to 20-30 applications) Electrode Body Pads that can be used to deliver electrical stimulation to the back, shoulders, thighs, knees or arms.

- a** Select the area you wish to apply electrical stimulation to.

Example placements for the body pads are shown below ✓

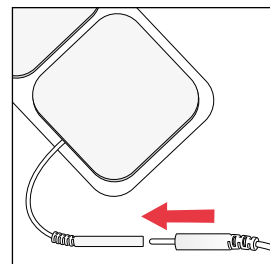


**Do NOT use the body pads on your head, face, neck or chest.**

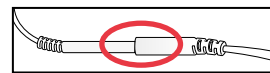


# Instructions for use

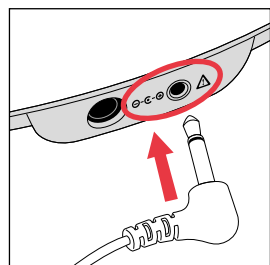
- b** Clean and dry the area where you will place the body pads.
- c** Make sure REVITIVE Medic is switched off. If the control panel is still illuminated, press the power button and turn REVITIVE Medic off.



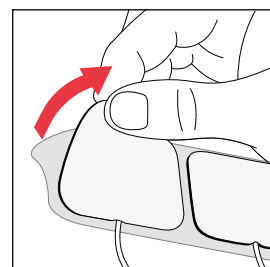
- d** Attach the ends of the body pads to the body pad cord.



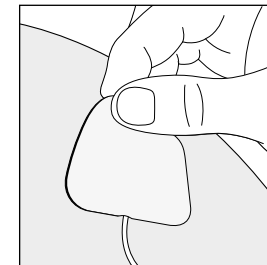
**Press connectors until no gap is between them.**  
Leaving a gap may cause discomfort.



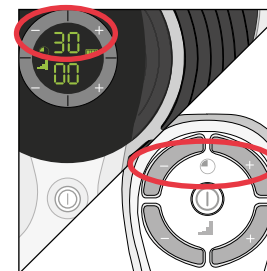
- e** Plug the other end of the body pad cord into the opening on the side of REVITIVE Medic.  
**Plugging in the body pad cord will automatically turn the foot pads off.**



- f** Remove the plastic liner from the body pads, by peeling it off carefully. Replace the body pads onto the plastic liner after use.



- g** Press the body pads on the area you wish to apply electrical stimulation to, as shown on page 19, gently pressing the adhesive side against the skin.



- h** Press the power button on the device **or** on the remote control to turn REVITIVE Medic on.  
You will hear a beep and the display lights will light up. The ⌚ time will read 30 minutes and 📶 Intensity will read 00.

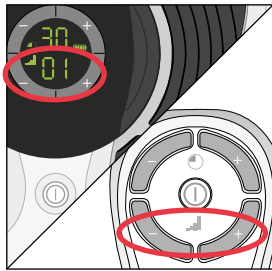
To switch off the REVITIVE unit at any time during operation, simply press the power ON/OFF button.

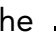
- i** Set the time for the number of minutes you want to use REVITIVE Medic. The default time is 30 minutes. You can set the timer for up to 60 minutes.  
You can use the buttons on the control panel **or** remote control.  
Press the ⌚ (+) Time Control to increase the time.  
Press the ⌚ (-) Time Control to decrease the time.

**NB** It is recommended to use REVITIVE Medic for 20-30 minutes per day.

Do not use REVITIVE Medic more than 6 sessions of 30 minutes (or the equivalent) per day. This may result in muscle fatigue.

# Instructions for use



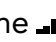
- j** Press the  (+) Intensity Control, one time, to start stimulation.

Continue to increase the intensity until you can feel or see the muscles in contract and relax. You can set the intensity between 1-99.

You can use the buttons on the device **or** remote control.

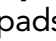
Press the (+) button to increase the level.

Press the (-) button to decrease the level.

- k** Press the  (+) Intensity Control until it is at the desired level.

Use an intensity that provides you with strong but comfortable muscle contractions and note that the intensity required may vary from day to day - eg using it on 25 one day, does not necessarily mean you will need to use it at 25 the next day. The required intensity could be higher or lower than previous usage.

It is normal to feel tingling or varying sensations in your calf muscles.

**If you feel pain or discomfort** - lower the intensity of the body pads using either the  (-) Intensity Control on the control panel of the device or on the remote control.

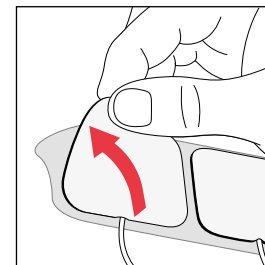
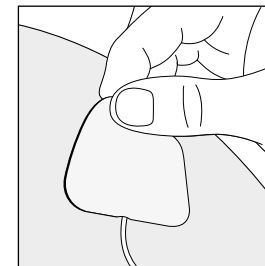
- l** The time control/display will start to count down in minutes as REVITIVE Medic cycles through its program.

- m** When REVITIVE Medic times out, the time display reads 00 and you will hear three beeps.

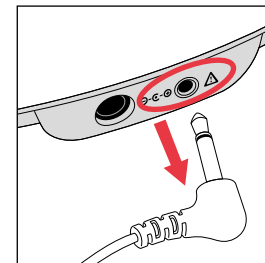
- n** REVITIVE Medic switches itself off automatically.

- o** Ensuring that the device has switched itself off, then gently peel the body pads from the skin.

**Do not pull the body pads off the skin using the body pad cords as this may damage the cords.**



- p** Replace the body pads onto its plastic liner after use.



- r** Unplug the body pad cord from the opening on REVITIVE Medic.

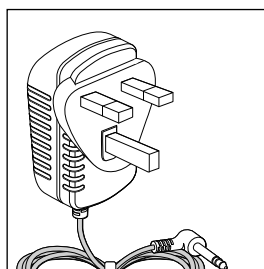
You do not need to detach the body pads from the body pad cords.

**Important:** the foot pads will not produce a stimulation if the Electrode Body Pads are plugged in.

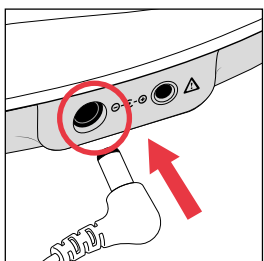
# Instructions for use

## STEP 6: RECHARGING THE BATTERY

REVITIVE Medic can be powered from either the rechargeable battery or by connecting it to an electrical socket.



**a** Locate the AC/DC power adaptor.



**b** Plug the small end of the power cord into the opening on the side of the REVITIVE Medic.

**c** Plug the power adaptor into the nearest electrical socket. This will start charging the (integrated) rechargeable battery.

The battery indicator will illuminate constantly to indicate the device is charging and to show the battery level, as below.



A full charge will take approximately 3 hours.

**d** Once fully charged, the full battery indicator will stay illuminated until the power adaptor is unplugged from the device or the electrical socket.

A full charge enables approximately 3½ hours of use (the equivalent of one 30 minute session each day for one week).

**Please note you can still use the device while it is charging but the battery indicator will not show.**

## STEP 7: CLEANING AND STORING REVITIVE

- a** Ensure REVITIVE Medic is switched off.
- b** Wipe down the foot pads with a soft damp cloth.  
Do not clean with chemicals.  
Do not immerse REVITIVE Medic in water.
- c** Store REVITIVE Medic in a cool, dry and dust-free location.  
Store out of direct sunlight.
- d** Place body pads onto the plastic liner.
- e** Store the body pads in a dry and ventilated location.  
Store out of direct sunlight.  
You do not have to detach the body pads from the body pad cords to store them.






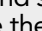
### Replacing the Batteries

The remote control requires two AAA 1.5V batteries to operate.

### Replacing the Body Pads

The body pads are reusable up to 20-30 applications. If the body pads start to lose their adhesiveness, rub a few drops of water into the surface. Replacement body pads can be obtained via [www.revitive.com](http://www.revitive.com)

# Troubleshooting





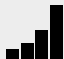

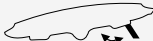


Problem	Possible Cause	Solution
<b>REVITIVE Medic is on (lights illuminated on the LED display) but I cannot feel the electrical stimulation through the foot pads.</b>	Not placing both bare feet on the foot pads at the same time.	Ensure that your feet are bare and each foot is placed on each of the foot pads at the same time. Keep increasing the  intensity up to a maximum of 99 until you feel the stimulation.
	Your feet may be dry.	Moisturise the soles of your feet to improve conductivity and stimulation and try the procedure again. You may also have to increase the  intensity level.
	You may be dehydrated.	Drink plenty of water before and after using the device. The device uses your body to create the electrical circuit. Water is an excellent conductor of electricity and if your body is less hydrated (below 60%) then the stimulation may be less, therefore it is important to always remain well hydrated.
	The  intensity level may be on too low a setting.	This is a very safe device. Keep increasing the  intensity level towards 99 until you feel the stimulation. You may find that you have to increase the  intensity level as you get used to the therapy. The aim is not to get to 99 but to find a setting that is comfortable for you.
	Body pad cord is connected to device.	Disconnect the body pad cord - the foot pads will not work while the body pad cord is plugged in.
	If, having tried the solutions above, you still cannot feel the stimulation:	Test the device by placing one hand across both footpads at the same time (The heel end of the footpads is easiest). With your other hand, and starting from zero, increase the  intensity level until you can feel the stimulation. If you can feel the stimulation through your hand then the device is working. If on 99 you still cannot feel the stimulation then please contact your authorised dealer.










Problem	Possible Cause	Solution
<b>No power or lights to REVITIVE Medic when it is switched on.</b>	AC Adaptor not switched on at the electrical socket or AC Adaptor not plugged into device properly.	Check electrical socket power is switched on and the AC Adaptor is plugged into the device correctly. If still not working – contact your authorised dealer.
	Flat battery	Plug device in an electrical socket and charge battery or run using mains power option.
<b>REVITIVE Medic is not vibrating.</b>	REVITIVE Medic IS NOT DESIGNED TO VIBRATE.	
<b>The IsoRocker is not "rocking".</b>	It is the muscles in your legs that cause the "rocking", the ISOROCKER IS NOT MECHANICAL.	The ISOROCKER will only rock when increased to an intensity which causes sufficient calf muscle contraction. It may be that you cannot comfortably increase the intensity high enough until you get used to the sensation. It is important that intensity is adjusted to a level that is comfortable.
	The device is too far in front of you.	Sit with your knees at a 90 degree angle.
	The IsoRocker system is not enabled.	Ensure IsoRocker Disabler is "flat", in centre position (see page 13).
<b>My legs are aching after treatment.</b>	You may have the  intensity on too high a setting and your muscles are being overworked.	Leave adequate time after each treatment to allow the muscles to recover (just like after vigorous exercise!). On your next session start on a lower setting (where you can feel the mild electrical stimulation and it is comfortable) and reduce the duration until your muscles have acclimatized to the stimulation.
<b>When using the IsoRocker on a hard floor it makes a tapping noise.</b>	Incorrect positioning of the device or too high an intensity level.	Adjust the positioning of the device or lower the intensity level to reduce the device tapping. Alternatively use a floor mat under the device to cushion the sound.

**For more information including Frequently Asked Questions, please visit [www.revitive.com](http://www.revitive.com)**



Technical Specifications

Name of product	REVITIVE Medic
Model	RMEDIC
Frequency	1Hz – 50Hz
Output current	Max 15mA
Weight	1.5kg
Dimensions (with IsoRocker enabled and disabled)	enabled: 355(W)x355(H)x75(D) mm disabled: 355(W)x355(H)x90(D) mm
Power consumption	5W
AC adaptor	CE Approved
Power source Input (adaptor used) ⚡ Output ⚡	100-240V ~ AC (⚡), 50/60Hz, 0.18A 5V (⚡) DC ⚡, 1.0A
Contraindications This describes situations where you should not use the REVITIVE Medic	
Warnings and Cautions Make sure you understand these before using the REVITIVE Medic	
Power	
Time Remaining	
Intensity Level	
Battery Indicator	
IsoRocker Disabler	
Center Positive Polarity	
Type BF medical electrical equipment	

Class II medical electrical equipment double insulated	
Complies with European Medical Devices Directive (93/42/EEC)	 0120
The Waste Electrical and Electronic Equipment Directive (WEEE Directive). At the end of the product lifecycle, do not throw this product into normal household garbage, but take it to a collection point for the recycling of electronic equipment	
Legal manufacturer of the device	
Keep dry	
Consult instructions for use	
Device LOT and serial number including year (YYYY) and month (MM) of manufacture can be found on the box and back of unit	LOT #YYYYMMXXXXX
Humidity and temperature limit for storage After any exposure to hot or cold temperatures outside the specified operating range of 10 – 40°C allow the product to re-adjust to the recommended operating temperatures to ensure continued product performance.	
Indoor Use Only	
Do not disassemble	

The Remote Control replicates the controls found on the device

Operating Frequencies	38 KHz
Operating Range Distance	0 to 25m at horizontal 0 to 18m at +/- 30 degree angle from the horizontal.



# Your international two year warranty

It is important to retain the retailer's receipt as proof of purchase. Staple your receipt to this back cover for future reference.

Please quote the following information if the product develops a fault. These numbers can be found on the base of the product:

Model no: .....

Lot no: .....

All REVITIVE devices are individually tested before leaving the factory. In the unlikely event of any device proving to be faulty within 30 days of purchase, it should be returned to the place of purchase for it to be replaced.

If the fault develops after 30 days and within 24 months of original purchase, you should contact your local distributor quoting model number and LOT number on the product, or write to your local distributor at the address shown.

You will be asked to return the product (in secure, adequate packaging) to the address shown with a copy of proof of purchase.

Subject to the exclusions set out below (see Exclusions) the faulty device will then be replaced and dispatched usually within 14 working days of receipt.

If, for any reason, this item is replaced during the 2 year guarantee period, the guarantee on the new item will be calculated from the original purchase date. Therefore, it is vital to retain your original till receipt or invoice to indicate the date of initial purchase.

To qualify for the 2 year guarantee, the device must have been used according to the manufacturer's instructions supplied.

## EXCLUSIONS:

- 1 Actegy Ltd, manufacturer of REVITIVE devices, shall not be liable to replace the goods under the terms of the guarantee where:
  - The fault has been caused or is attributable to accidental use, misuse, negligent use or used contrary to the manufacturer's recommendations or where the fault has been caused by power surges or damage caused in transit.
  - The device has been used on a voltage supply other than that stated on the product or used with a power adaptor other than the one supplied with the product.
  - Repairs have been attempted by persons other than our service staff (or authorised dealer).
  - The device has been used for hire purposes or non-domestic use.
  - The device is second hand.
- 2 Actegy Ltd are not liable to carry out any type of servicing work, under the guarantee.
- 3 Accessories such as Electrode body pads are not covered by the guarantee.
- 4 Batteries and damage from leakage are not covered by the guarantee.
- 5 This guarantee does not confer any rights other than those expressly set out above and does not cover any claims for consequential loss or damage. This guarantee is offered as an additional benefit and does not affect your statutory rights as a consumer.

To activate your free 2 year warranty please register your device at the REVITIVE website (see warranty/guarantee card). If you prefer you can also post your registration.

# Your international two year warranty

## AUSTRALIAN WARRANTY

This device is guaranteed for 2 years against faulty material, components and workmanship.

This warranty is in addition and does not affect your statutory rights.

Proof of purchase must be produced for any warranty benefit.

In the unlikely event of any device proving to be faulty, securely pack and return the item to the place of purchase accompanied by the original receipt or invoice.

Our goods come with guarantees that cannot be excluded under the Australian Consumer Law. You are entitled to a replacement or refund for a major failure and for compensation for any other reasonably foreseeable loss or damage. You are also entitled to have the goods repaired or replaced if the goods fail to be of acceptable quality and the failure does not amount to a major failure.

## NOT COVERED BY THIS WARRANTY (Australia only)

- If the device has not been used in accordance with the manufacturers' recommendations or Instructions.
- If the fault is deemed to be caused by abuse, misuse, neglect, modifications or improper use and or care.

- Connection to incorrect voltage or used with an incorrect power adaptor to that stamped or supplied with the product.
- Unauthorised repairs.
- Device used other than for domestic purposes.
- Excluding accessories such as Electrode body pads, gloves and bag.
- Freight and insurance costs.

If for any reason this item is replaced during the 2 year guarantee period, the guarantee on the new item will be calculated from original purchase date. Therefore it is vital to retain your original receipt or invoice to indicate the date of original purchase.

Actegy Ltd's policy is to continually improve quality design and product quality. The company therefore reserves the right to change any specifications or to carry out modifications as deemed worthy at any time.

To activate your free 2 year warranty please register your device at the REVITIVE website (see warranty/guarantee card). If you prefer you can also post your registration.



 Actegy Ltd  
REFLEX, Cain Road  
Bracknell, RG12 1HL  
United Kingdom  
Tel: +44 (0)845 871 5989

## Country Distributors

### International and UK

Tel: +44 (0)845 871 5989

### Australia

Actegy Pty Ltd  
Unit 4 / 1 Newspaper Place  
Maroochydore  
QLD, 4558  
Tel: 1800 505 108

### New Zealand

Actegy Ltd.  
24B Moorefield Road  
Johnsonville  
Wellington 6037  
Tel: 0800 484 325



Copyright © 2015 Actegy Ltd. All rights reserved. ACTEGY® and REVITIVE™ and Circulation Booster™ are registered trademarks of Actegy Ltd. The REVITIVE product is a proprietary design and is protected by applicable design laws.

AW 2301\_IFU03\_9524382 P.D 06.2014