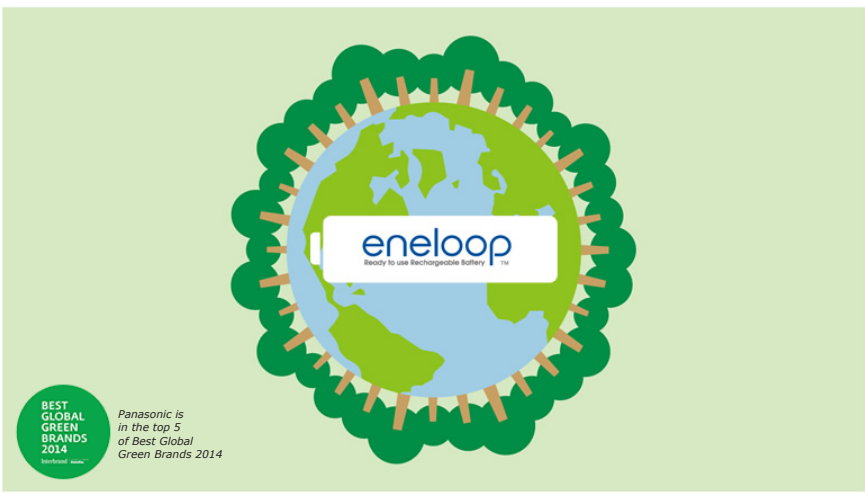


Save resources with eneloop!

Using eneloop instead of an alkaline battery saves resources. Each year, approximately 300 million batteries are used worldwide. Replacing even a small percentage of these with eneloop will help to conserve the environment.



Ready to use after purchase! Also ecological!

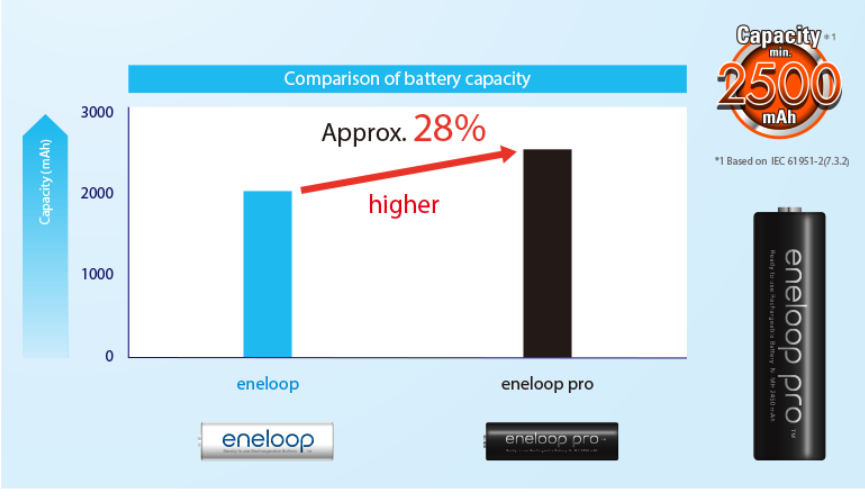
Pre-charged by solar energy and ready to use, eneloop is the world's nature friendly battery.



Advantages of eneloop pro

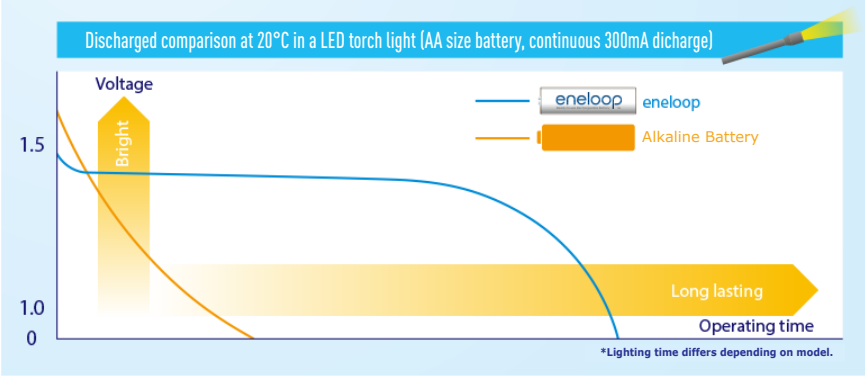
1 Higher capacity than a standard eneloop

eneloop Pro has approximately 28% higher capacity than a standard eneloop and is best for high energy demanding devices!



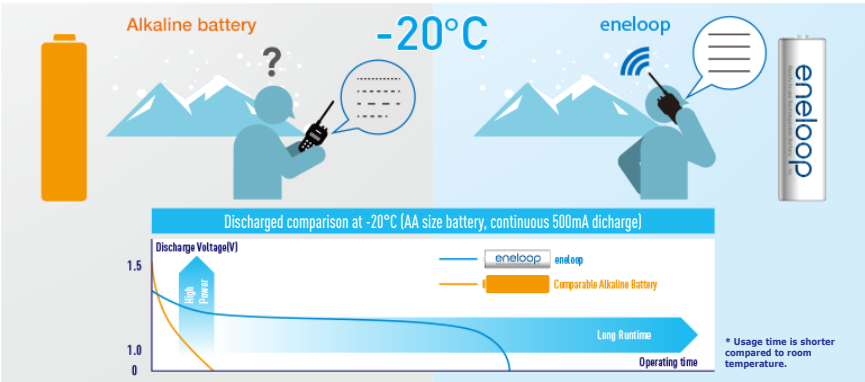
2 Lasts much longer than an alkaline battery.

Longer lasting than an alkaline battery thanks to it's stable voltage.



3 Usable in low temperatures, such as in ski resorts.

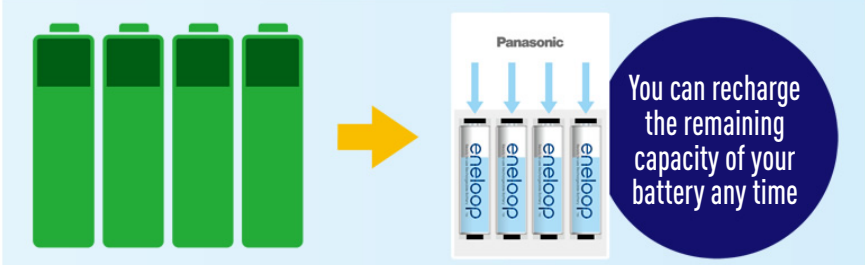
Keeps higher voltage than an alkaline battery, at low temperatures.



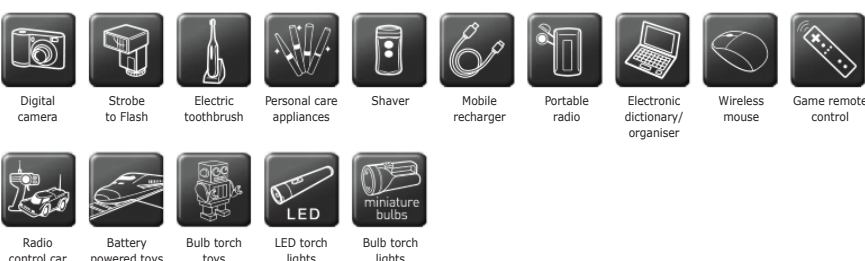
What's more!

No need to worry about the "memory effect"

When a rechargeable battery that hasn't been fully discharged, is repeatedly topped up, it "remembers" that it's only been used for a short time. When used again, the voltage may quickly drop. This is called the memory effect. eneloop has a high voltage to begin with and so it maintains enough voltage even if this occurs. There's no need to worry about the memory effect.



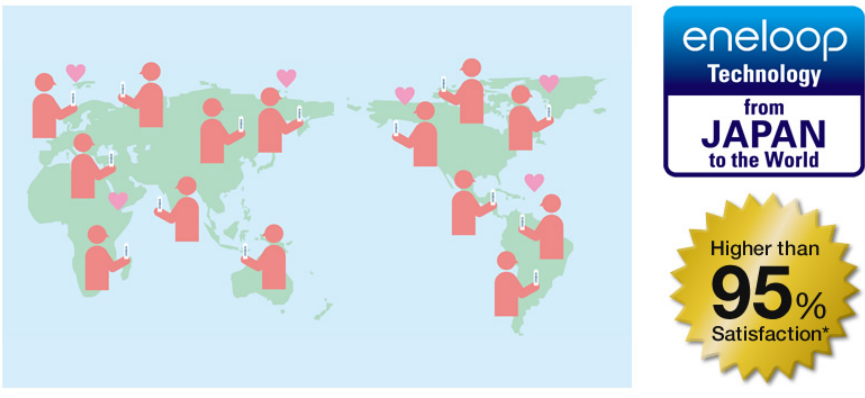
Ideal for various devices



* Shavers do not include waterproof types.
* Be sure to read and follow the User's Instructions for each appliance prior to actual use.

World acclaimed quality!

eneloop is shipped to over 80 countries and it's Japanese inspired design and production is appreciated by consumers all over the world. Users feel a high level of satisfaction.



* Based on an in-house survey of American, German, Chinese and Japanese users.

