

Quin Folding Table 4 Folding Chairs

Assembly Instructions - Please keep for future reference

544/9745

H O
M E
BY ARGOS



DIMENSIONS

TABLE CHAIR

Width:	85 cm	44 cm
Depth:	85 cm	47 cm
Height:	70 cm	76 cm

Important – Please read these instructions fully before starting assembly

If you need help or have damaged or missing parts, call the Argos Aftersales
Helpline: 0345 640 0800



Safety and Care Advice

Important – Please read these instructions fully before starting assembly

- Check you have all the components and tools listed on the following pages.
- Remove all fittings from the plastic bags and separate them into their groups.
- Keep children and animals away from the work area, small parts could choke if swallowed.
- Make sure you have enough space to layout the parts before starting.
- Maximum safe weight of user: 110kgs
- Do not stand on the chair.
- Do not use this chair as step ladder.

- During assembly do not stand or put weight on the product, this could cause damage.
- Assemble the item as close to its final position (in the same room) as possible.
- Assemble on a soft level surface to avoid damaging the unit or your floor.
- Parts of the assembly will be easier with 2 people.



- To reduce the likelihood of damaging your product please ensure that your power drill is set on a low torque setting.

Care and maintenance

- Only clean using a damp cloth and mild detergent, do not use bleach or abrasive cleaners.
- From time to time check that there are no loose screws on this unit.
- This product should not be discarded with household waste. Take to your local authority waste disposal centre.

Handy Hints

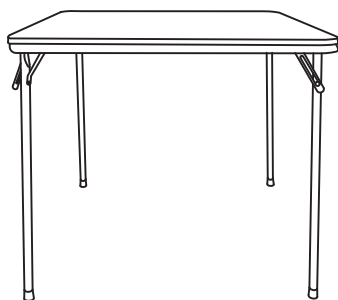
- Assemble all parts and bolts loosely during assembly, only once the product is complete should you fully tighten the bolts
- Regularly check and ensure that all bolts and fittings are tightend properly.

Note: if required the next page can be cut out and used as reference throughout the assembly. Keep this page with these instructions for future reference.

Components - Panels

Please check you have all the panels listed below

- 1** Table
(85x85x70cm)



- 2** Chair x 4
(44x47x76cm)



Assembly Instructions

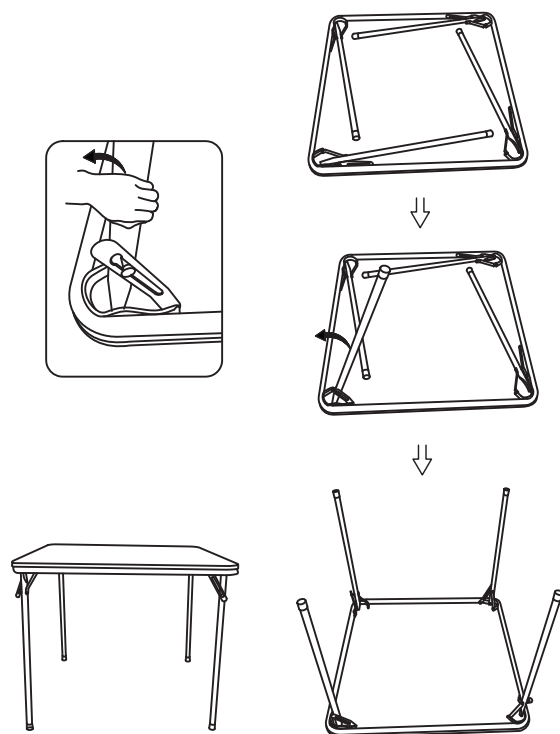
Step 1

Unfolding and folding the table

a: Unfolding the table

Please follow the drawing step to unfold the table.

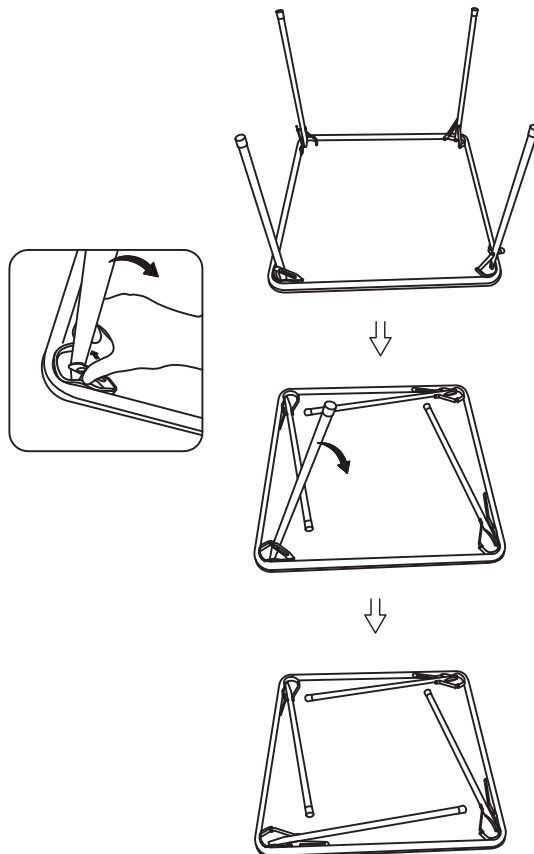
a:



b: Folding the table

Please follow the drawing step if you would like to fold the table.

b:



Assembly Instructions

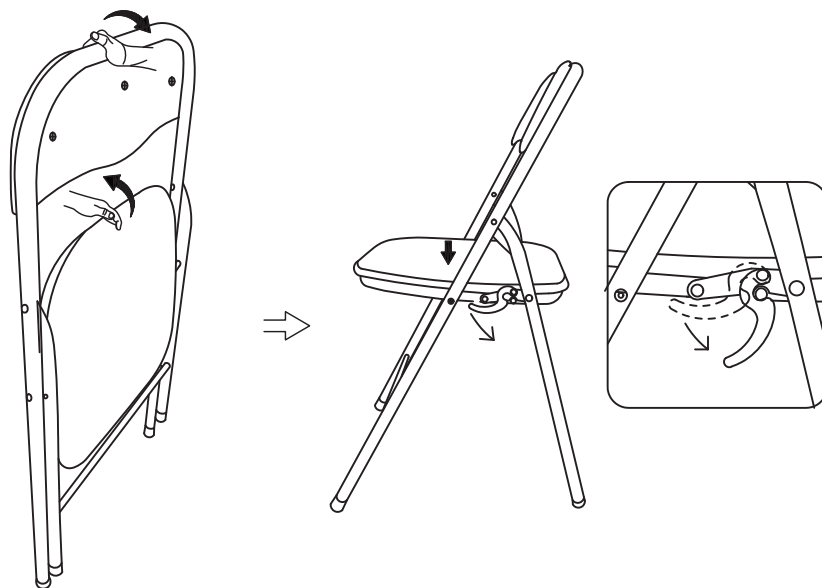
Step 2

Unfolding and folding the chair

a: Unfolding the chair

Please follow the drawing step to unfold the chair.

a:



b: Folding the chair

Please follow the drawing step if you would like to fold the chair.

b:

