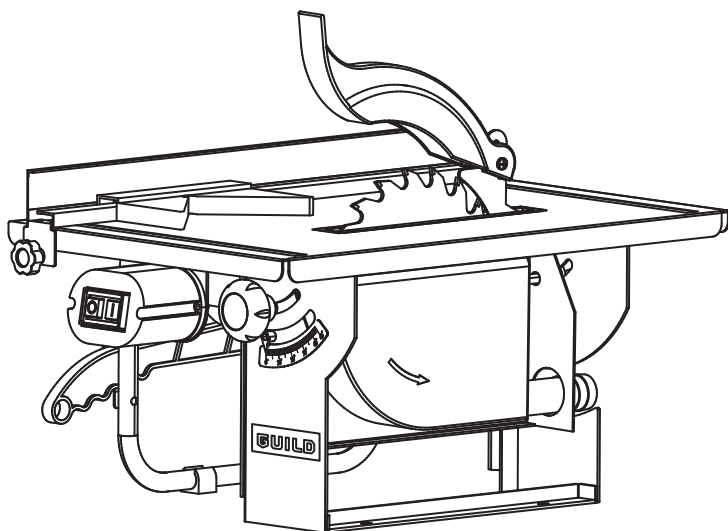


GUILD

800W 200mm Table Saw

Instruction Manual

BTS180B



GUILD

After Sales Support

UK/Ireland 0333 3201989
Help@guildpowertools.co.uk

Important - Please read these instructions fully before operating or maintaining your Guild table saw

These instructions contain important information that will help you get the best from your Guild table saw, ensuring it remains safe to operate.

If you need help or have damaged or missing parts, call the Customer Helpline on 0333 3201989

Contents

Safety Information	3
In The Box	7
Accessories	7
Assembly Instructions	8
Operating Instructions.....	10
Maintenance	11
Technical Data	13
Environmental Protection.....	13
Guarantee	14
Declaration of Conformity.....	14
Plug Replacement (Uk & Ireland Only)	15

Safety Information

Important - Please read these instructions fully before starting assembly

Warning Symbols

The following warning symbols appear throughout this assembly manual and indicate the appropriate safety measures you should take when assembling and operating the table saw.



To reduce the risk of injury, Please read the instruction manual



Wear eye protection



Wear ear protection



Wear dust mask



Remove plug from mains before maintenance or if cord is damaged.



Waste electrical products must not be disposed of with household waste. Please recycle where facilities exist. Check with your local authorities or retailer for recycling advice.

Safety Information

Important - Please read these instructions fully before starting assembly



"WARNING! When using electric tools basic safety precautions should always be followed to reduce the risk of fire, electric shock and personal injury including the following.

Read all these instructions before attempting to operate this product and save these instructions".

Maintenance and Servicing

Remove the plug before carrying out any adjustment, servicing or maintenance

Safe operation

- 1 - Keep work area clear
 - Cluttered areas and benches invite injuries.
- 2 - Consider work area environment
 - Do not expose tools to rain.
 - Do not use tools in damp or wet locations.
 - Keep work area well lit.
 - Do not use tools in the presence of flammable liquids or gases.
- 3 - Guard against electric shock
 - Avoid body contact with earthed or grounded surfaces (e.g. pipes, radiators, ranges, refrigerators).
- 4 - Keep other persons away
 - Do not let persons, especially children, not involved in the work touch the tool or the extension cord and keep them away from the work area
- 5 - Store idle tools
 - When not in use, tools should be stored in a dry locked-up place, out of reach of children.
- 6 - Do not force the tool
 - It will do the job better and safer at the rate for which it was intended.
- 7 - Use the right tool
 - Do not force small tools to do the job of a heavy duty tool.
 - Do not use tools for purposes not intended; for example do not use circular saws to cut tree limbs or logs.
- 8 - Dress properly
 - Do not wear loose clothing or jewellery, they can be caught in moving parts.
 - Non-skid footwear is recommended when working outdoors.
 - Wear protective hair covering to contain long hair.
- 9 - Use protective equipment
 - Use safety glasses.
 - Use face or dust mask if working operations create dust.
- 10 - Connect dust extraction equipment
 - If the tool is provided for the connection of dust extraction and collecting equipment, ensure these are connected and properly used.
- 11 - Do not abuse the cord
 - Never yank the cord to disconnect it from the socket Keep the cord away from heat, oil and sharp edges.
- 12 - Secure work
 - Where possible use clamps or a vice to hold the work. It is safer than using your hand.

Safety Information

Important - Please read these instructions fully before starting assembly

- 13 - Do not overreach
 - Keep proper footing and balance at all times.
- 14 - Maintain tools with care
 - Keep cutting tools sharp and clean for better and safer performance.
 - Follow instruction for lubricating and changing accessories.
 - Inspect tool cords periodically and if damaged have them repaired by an authorized service facility.
 - Inspect extension cords periodically and replace if damaged.
 - Keep handles dry, clean and free from oil and grease.
- 15 - Disconnect tools
 - When not in use, before servicing and when changing accessories such as blades, bits and cutters, disconnect tools from the power supply.
- 16 - Remove adjusting keys and wrenches
 - Form the habit of checking to see that keys and adjusting wrenches are removed from the tool before turning it on.
- 17 - Avoid unintentional starting
 - Ensure switch is in "off" position when plugging in
- 18 - Use outdoor extension leads
 - When the tool is used outdoors, use only extension cords intended for outdoor use and so marked.
- 19 - Stay alert
 - Watch what you are doing, use common sense and do not operate the tool when you are tired.
- 20 - Check damaged parts
 - Before further use of tool, it should be carefully checked to determine that it will operate properly and perform its intended function.
 - Check for alignment of moving parts, binding of moving parts, breakage of parts, mounting and any other conditions that may affect its operation.
 - A guard or other part that is damaged should be properly repaired or replaced by an authorized service centre unless otherwise indicated in this instruction manual.
 - Have defective switches replaced by an authorized service centre.
 - Do not use the tool if the switch does not turn it on and off.
- 21 - Warning
 - The use of any accessory or attachment other than one recommended in this instruction manual may present a risk of personal injury.
- 22 - Have your tool repaired by a qualified person
 - This electric tool complies with the relevant safety rules. Repairs should only be carried out by qualified persons using original spare parts, otherwise this may result in considerable danger to the user.
- 23 - If the replacement of the supply cord is necessary, this has to be done by the manufacturer or his agent in order to avoid a safety hazard.
- 24 - For tools intended to be connected to a water supply:
 - Replacement of the plug or the supply cord shall always be carried out by the manufacturer of the tool or his service organisation,
 - Keep water clear off the electrical parts of the tool and away from persons in the working area.

Safety Information

Important - Please read these instructions fully before starting assembly

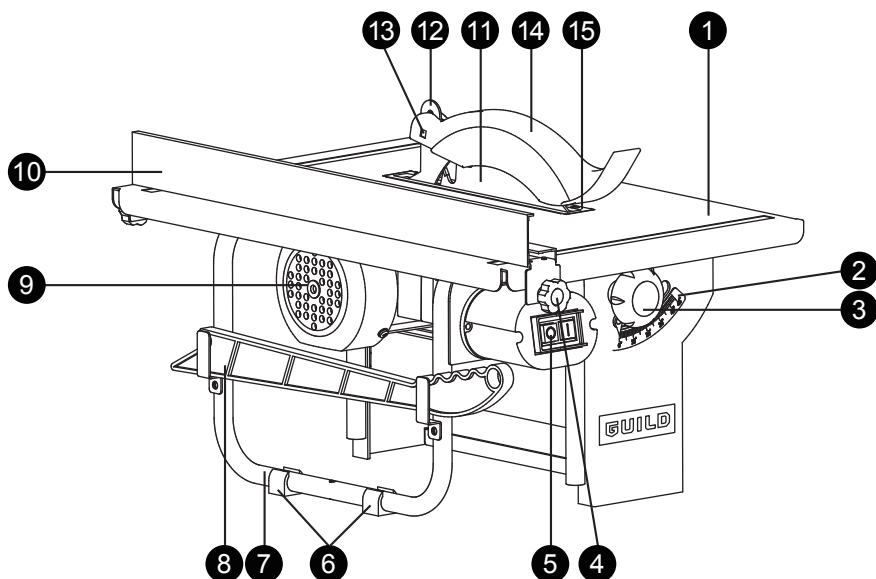
Table Saw Safety Warnings

- Do not use saw blades which are damaged or deformed;
- Replace table insert when worn;
- Use only saw blades recommended by the manufacturer; which conform to EN 847-1.
WARNING: When changing the saw blade beware that the width of the groove cut of the saw blades shall not be less than and the thickness of the body of the saw blade shall not be more than the thickness of the riving knife;
- Take care that the selection of the saw blade is suitable for the material to be cut;
- Wear suitable personal protective equipment when necessary, this could include
 - Hearing protection to reduce the risk of induced hearing loss;
 - Wear respiratory protection to reduce the risk of inhalation of harmful dust;
 - Wear gloves when handling saw blades and rough material. Saw blades shall be carried in a holder whenever practicable;
- Connect circular saws to a dust-collecting device when sawing wood. The operator shall be informed of the factors that influence exposure of dust e.g. type of material being tool and importance of local extraction (capture or source) and proper adjustment of hoods/baffles/chutes;
- Do not use High speed steel (HS) blades;
- The push-stick or push block should always be stored with the tool when not in use.
- Take care when slotting;

In The Box

Parts

- | | |
|---|---------------------------------|
| 1 Saw table | 9 Motor |
| 2 Scale for angle settings (SEE FIG C1) | 10 Parallel guide |
| 3 Locking knob for angle adjustment | 11 TCT blade |
| 4 Parallel guide locking screw | 12 Riving knife |
| 5 On/Off switch | 13 Screw for TCT blade guard |
| 6 Rubber pad | 14 TCT blade guard |
| 7 Stand | 15 Table insert (SEE FIG G2) |
| 8 Push Stick | 16 45°cutting guide (SEE FIG E) |



Accessories

Parallel guide
45°cutting guide
Push stick
Spanner
TCT blade (pre-assembled)

1pc
1pc
1pc
1pc
1pc

Customer Helpline **0333 3201989**

Assembly Instructions



NOTE: Before using the tool, read the instruction book carefully.

Intended Use

This tool is intended for cutting wood and similar material e.g. MDF and chipboard, plastic. This product should not be used on other materials or those harmful to health. It is to be used for dry operation only without water or other cooling liquids.

This product is intended for private domestic use only, not for any commercial trade use. It must not be used for any purposes other than those described.

USING THE SAW

Before putting the tool into operation

The tool has to be set up where it can stand firmly, e.g. on a work bench, or it must be bolted to a strong stand.

All the covers and safety devices have to be properly fitted before the tool is switched on. It must be possible for the TCT blade to run freely.

When working with wood that has been processed before, watch out for foreign bodies such as nails or screws etc.

Before you actuate the On/Off switch, make sure that the TCT blade is correctly fitted and all moving parts run smoothly.

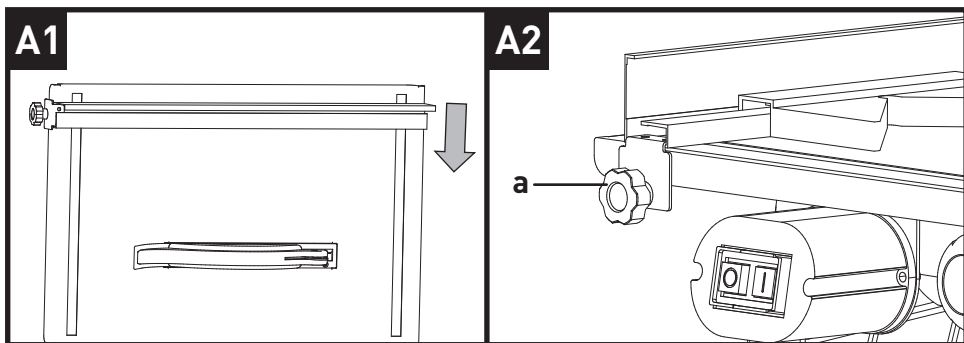
Before you connect the tool to the power supply, make sure the data on the rating plate is the same as that for your mains.

1. ON/OFF SWITCH

To switch on the saw, press the green button "I". Allow the blade to reach full speed before cutting. To switch off, press the red button "O".

2. PARALLEL GUIDE

To mount the parallel guide, slide the parallel guide (10) onto the saw table (1), and fasten it with the two parallel guide locking screws (a) provided. (SEE FIG A1, A2)



Assembly Instructions

1) STOP HEIGHT (SEE FIG B1 & B2)

The parallel guide (10) supplied with the bench type circular saw has two different guide faces. For thick material you must use the parallel guide rail (b) as shown in Fig. B1, for thin material you must use the stop rail as shown in Fig. B2.

To change the height of the parallel guide, loosen the parallel guide locking screw (a) and pull the parallel guide rail off the carrier rail (c).

Turn the parallel guide rail (b) 180° to the left or the right, depending on the required height of the stop, and plug in back on the carrier rail (c).

Re-tighten the parallel guide locking screw (a).

2) CUTTING WIDTH (SEE FIG B2)

The parallel guide (10) has to be used when making longitudinal cuts in wooden workpieces. Slide the parallel guide (10) to the right or left side of the saw table (1).

The parallel guide (10) can be set to the required dimension with the help of the scale (d) engraved on the saw table (1).

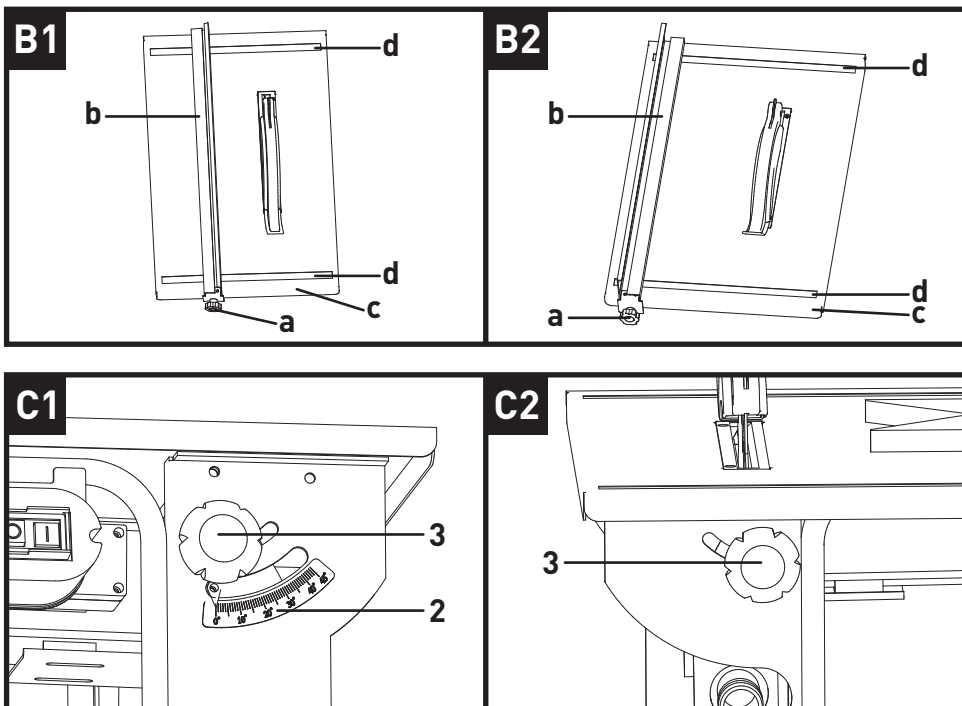
Tighten the parallel guide locking screw (a) in order to fix the parallel guide (10).

3. ADJUSTING THE ANGLE (SEE FIG C1, C2)

Loosen the locking knob for angle adjustment (3).

You can now adjust the blade (11) to the required angle (see scale (2)) by sliding the locking knob for angle adjustment (3).

Re-tighten the locking knob for angle adjustment (3).



Operating Instructions

After each new adjustment it is advisable to carry out a trial cut in order to check the set dimensions.

After switching on the saw, wait for the blade to reach its maximum speed of rotation before commencing with the cut.

Secure long workpieces against falling off at the end of the cut (e.g. with a roller stand etc.)

Take extra care when starting the cut!

1. CUTTING NARROW WORKPIECES (WIDTH LESS THAN 120 mm) (SEE FIG D)

Adjust the parallel guide (10) to the width of workpiece you require.

Feed in the workpiece with two hands.

Always use the push stick (8) in the area of the TCT blade (11). (A push stick is supplied with the saw!)

Always push the workpiece through to the end of the riving knife (12).

CAUTION! With short workpieces, use the push stick from the beginning.

2. CUTTING EXTREMELY NARROW WORKPIECES (WIDTH LESS THAN 30 mm)

Adjust the parallel guide (10) to the width of workpiece you require.

Use the push block to press the workpiece against the parallel guide rail (b) and push the workpiece with the push stick (8) through to the end of the riving knife (12).

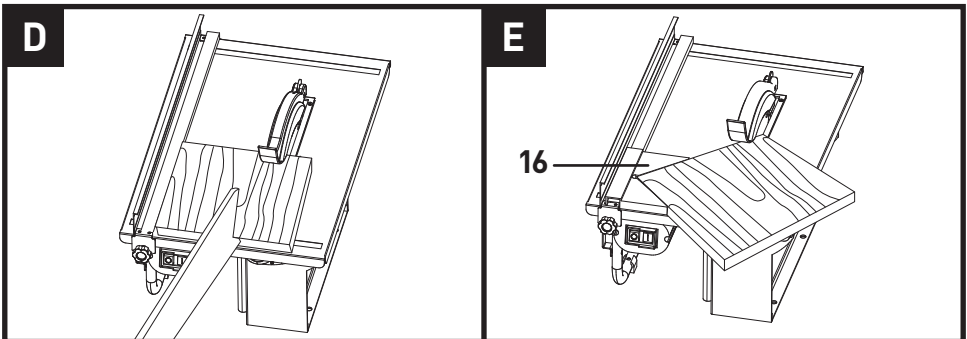
There is no push block supplied with the saw!

(Available from your specialist dealer)

3. STANDARD 45° MITRE CUTS (SEE FIG E)

Use the 45° cutting guide (16) and the parallel guide together to make standard 45° mitre crosscutting. Only fix the parallel guide with its lower side toward the blade. Insert the 45° cutting guide to the parallel guide as shown in FIG E. Set the parallel guide to required cutting width and tighten securely. Place the workpiece into the 45° cutting guide.

Switch on the saw and push the 45° cutting guide along the parallel guide.



Maintenance



WARNING: Always be sure that the tool is switched off and unplugged before adjusting or checking function on the tool.

Remove the plug from the socket before carrying out any adjustment, servicing or maintenance.

Your power tool requires no additional lubrication or maintenance. There are no user serviceable parts in your power tool. Never use water or chemical cleaners to clean your power tool. Wipe clean with a dry cloth. Always store your power tool in a dry place. Keep the motor ventilation slots clean. Keep all working controls free of dust. Occasionally you may see sparks through the ventilation slots. This is normal and will not damage your power tool.

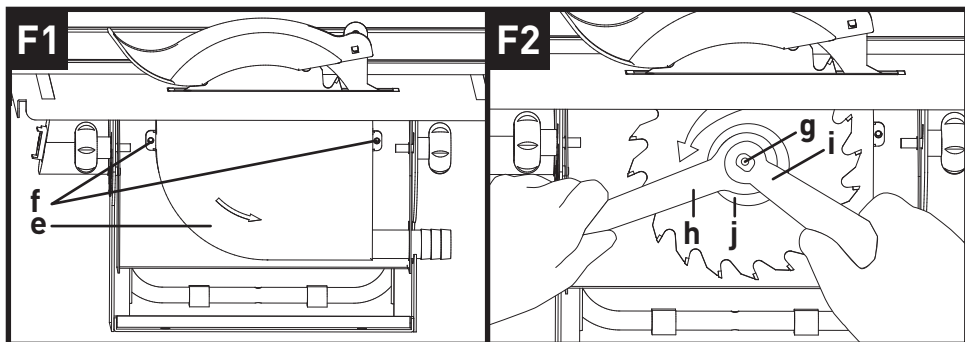
If the supply cord is damaged, it must be replaced by the manufacturer, its service agent or similarly qualified persons in order to avoid a hazard.

1. CHANGING THE TCT BLADE (SEE FIG F1, F2)

CAUTION! Pull out the power plug. Take off the chip bin cover (e) by loosening the fixing screws (f) and moving it. Undo the nut (g) with a ring wrench (h) on the nut (g) and a face wrench (i) on the outer flange (j) to apply counterclockwise pressure.

CAUTION! Turn the nut in the direction of rotation of the TCT blade (11). Take off the outer flange (j) and pull the old TCT blade (11) off the inner flange by dropping the blade at an angle. Clean the mounting flange. Fit the new TCT blade in reverse order.

CAUTION! Note the direction of rotation (see arrow on the TCT blade).



Maintenance

2. ADJUSTING THE RIVING KNIFE (SEE FIG G1, G2, G3)

1) Loosen the screw (k) for the TCT blade guard (14) with a spanner, and remove the TCT blade guard (14). [SEE FIG G1]

2) Remove the two screws (l) and take out the table insert (15). [SEE FIG G2]

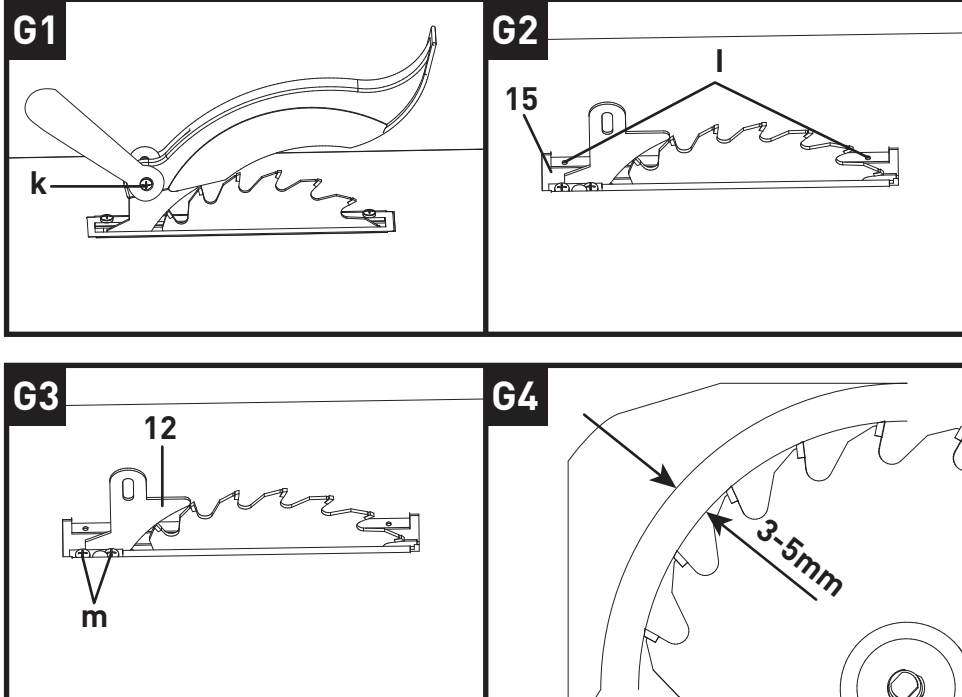
3) Loosen the two socket-head screws (m). [SEE FIG G3]

Adjust the riving knife (12) so that the gap between the TCT blade (11) and the riving knife (12) equals 3 - 5 mm. [SEE FIG G4]

The riving knife (12) has to be in line with the TCT blade (11) in longitudinal direction.

Retighten the two screws (m).

The setting of the riving knife has to be checked each time after changing the TCT blade.



Technical Data

Technical Data Table


Voltage	230 -240V-50Hz
Power input	S2 10min 800W
No load speed	2,950/min
Blade diameter	Φ200mm
Cutting depth	
90 degree	45mm
45 degree	27mm
Table bevel range	0-45°
Table size	505x335mm
Machine weight	10.78kg
Protection class	I

Noise Information

A weighted sound pressure

A weighted sound power

Wear ear protection when sound pressure is over:

$L_{pA} : 96.6\text{dB(A)}$
 $L_{wA} : 109.6\text{dB(A)}$
 $K_{pA} \text{ \& } K_{wA} = 3.0\text{dB(A)}$
 80dB(A)


Environmental Protection



Waste electrical products must not be disposed of with household waste. Please recycle where facilities exist. Check with your local authorities or retailer for recycling advice.

Guarantee

This product is selected for DOMESTIC USE ONLY and not for business use.

This product is guaranteed against manufacturing defects for a period of 24 months. This does not cover the product where the fault is due to misuse, abuse, use in contravention of the instructions, or where the product has been the subject of unauthorised modifications or alterations, or has been the subject of commercial use. In the event of a problem with the product within the guarantee period please return it to your nearest store. If the item is shown to have an inherent defect present at the time of sale, the store will provide you with a replacement. Your statutory rights remain unaffected.

Issue1 08/2015

Declaration of Conformity

This Guild 800W 200mm Table Saw model number BTS180B fully complies with the Machinery Directive 2006/42/EC, Electromagnetic Compatibility Directive 2004/108/EC(before 2016/04/20) and 2014/30/EC(since 2016/04/20), RoHS Directive 2011/65/EU and the following harmonized EU standards

EN 61029-2-1: 2012

EN 61029-1: 2009 + A11:2010

EN 55014-1: 2006 + A1:2009 + A2:2011

EN 55014-2: 1997 + A1:2001 + A2:2008

EN 61000-3-2: 2014

EN 61000-3-3: 2013

This declaration is made under the sole responsibility of Argos Ltd, 489/499 Avebury Boulevard, Milton Keynes, MK9 2NW

Category Technical Manager

Issued 20/10/2015

signed *Luke Wong*

Plug Replacement (Uk & Ireland Only)

If you need to replace the fitted plug then follow the instructions below.

IMPORTANT

The wires in the mains lead are colored in accordance with the following code:

Blue = Neutral

Brown = Live

Green/Yellow=Earth

As the colors of the wires in the mains lead of this appliance may not correspond with the colored markings identifying the terminals in your plug, proceed as follows. The wire which is colored blue must be connected to the terminal which is marked with N. The wire which is colored brown must be connected to the terminal which is marked with L. The green/yellow wire to the earth terminal is marked with E or \perp .

If a 13 AMP (BS 1363/A) Plug is used, a 13 AMP Fuse must be fitted, or if any other type of plug is used a 13 AMP Fuse must be fitted, either in the Plug or Adaptor, or on the Distribution Board.

Note: If a moulded plug is fitted and has to be removed take great care in disposing of the plug and severed cable, it must be destroyed to prevent engaging into a socket.

