



Philips
Cordless phone with
answering machine

25 min answering machine
1.6" display/ blue backlight

D1351B



Keep it simple

The Philips D135 Cordless Phone with inbuilt answering machine packs essential functions in a fresh and engaging design. Excellent sound reproduction and easy plug & play lets you enjoy every conversation with great clarity and ease.

Nice and simple

- Up to 25 minutes message on your answering machine
- Ultimate convenience through easy setup
- Textured back cover for non-slip grip
- Menu in multiple local languages
- Easy to read 4.1 cm (1.6") display with backlight
- Up to 10 hours talk time on a single charge
- Caller ID – so you always know who is calling*

Crystal clear sound

- Parametric Equalizer delivers pure and clear sound
- Automatic Volume Control offsets unwanted volume variation
- Optimized antenna layout for great reception in any room
- Advanced sound testing & tuning for superb voice quality

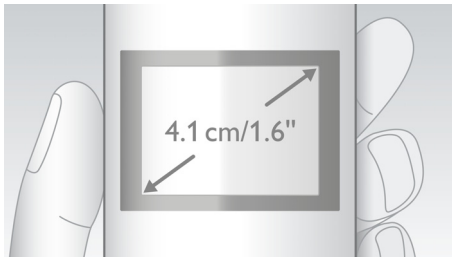
Eco-conscious product

- Low radiation and power consumption

PHILIPS

Highlights

4.1cm (1.6") display

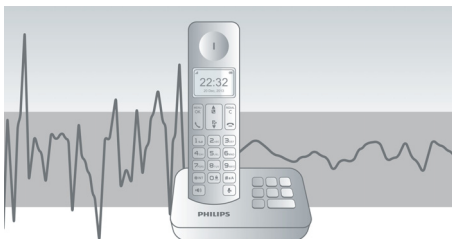


Easy to read 4.1 cm (1.6") display with backlight

Advanced sound testing

We test the sound quality of our DECT phones the same way as high-end headphone manufacturers do. Using an advanced ear simulator, we can accurately re-create the way people actually hear. This helps our acoustic engineers to measure and fine-tune things like frequency response, distortion and overall hearing perception, to create perfect voice reproduction.

Automatic Volume Control



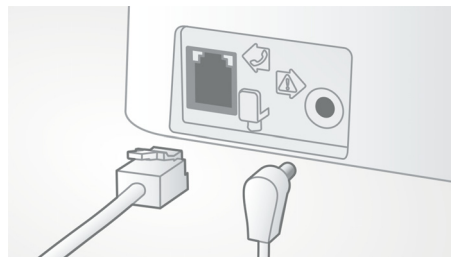
Automatic Volume Control offsets variations in sound signal, which can be caused by distance, signal strength or the caller's phone - so what you hear always remains consistent. Reducing the audio amplification for strong signals, and increasing it for weak ones, it means you can enjoy a smooth conversation without unwanted sound volume variation.

Caller ID*



Sometimes it is good to know who is calling before you answer. And our Caller ID lets you keep track of who is on the other end of the line.

Easy setup



Ultimate convenience through easy set up. Simplified installation - Plug & Play product

Eco-conscious product



Philips phones are energy efficient and designed to be respectful to the environment.

Menu in local languages



Enjoy easy set-up, navigation and control with intuitive menu available in local languages.

Non-slip grip



The rear of the handset is treated with a special texture for added comfort and better grip.

Optimized antenna layout



Our optimized antenna layout ensures strong and stable reception – even in areas of the house where cordless transmission is difficult. Now you can take a call wherever you are in the house, and enjoy a long, uninterrupted conversation even as you walk around.

Parametric Equalizer



Our telephones use parametric equalization in the digital sound processing to fine-tune the sound response back to the intended linear frequency response curve, delivering sound that is pure and clear, for each conversation.

Up to 10 hours talk time

Up to 10 hours talk time on a single charge

Specifications

Convenience

- Menu structure in the handset: List Menu
- Signal strength indicator: 3-bar indicator
- Battery level indicator: 3-bar battery icon
- Intercom - multiple handsets
- Date / Time display
- Programmable hot keys: Key 1 and 2
- Call Management: Call Waiting*, Caller ID*, Microphone mute, Missed Calls, Received Calls, Dialed calls
- Keypad lock
- Key tone on/off
- Auto hang up
- Multi handset capability: Up to 4
- Number of keys: 20
- Base Station keys: Paging key
- Up to 10 hrs talk time
- Charge time: 8 hours
- Line cord length: 1.5m
- Power cord length: 1.5m
- Range: Open field <300m; indoor <50m
- Non-slip grip: Triangular pattern
- Up to 200 hrs standby time

Sound

- Volume control on handset
- Ringtones on handset: 10 standard
- HQ-Sound

Picture/Display

- Display size: 4.1cm / 1.6"
- Display type: 12 digits (Alphanumeric) +hard icons
- Backlight: Yes
- Backlight color: Blue

Answering Machine

- Recording time capacity: up to 25 minutes
- Pre-recorded OGM
- Answering machine control: from handset

Memory Capacity

- Phonebook: 50 names and numbers
- Redial List Capacity: 10 last numbers
- Call log entries: 20 entries
- Phonebook store in the base

Power

- Battery capacity: 300 mAh
- Battery type: AAA NiMH Rechargeable
- Mains power: AC 100-240V ~50/60Hz
- Power Consumption: < 0.75 W

Security

- Transmission encryption : Yes

Network Features

- Compatible: GAP

SAR Value

- Philips handsets: <0.1 W/kg

Packaging dimensions

- Packaging type: Carton
- Number of products included: 1
- Type of shelf placement: Laying
- Packaging dimensions (W x H x D):
18.4 x 13.5 x 5.9 cm
- Gross weight: 0.3467 kg
- Nett weight: 0.2626 kg
- Tare weight: 0.0841 kg
- EAN: 48 95185 61877 7



Issue date 2015-08-25

Version: 1.3.4

12 NC: 8670 001 32309
EAN: 48 95185 61877 7

© 2015 Koninklijke Philips N.V.
All Rights reserved.

Specifications are subject to change without notice.
Trademarks are the property of Koninklijke Philips N.V.
or their respective owners.

www.philips.com

* **This feature requires additional subscription of Caller ID service.
Please check with your local network operator for details.