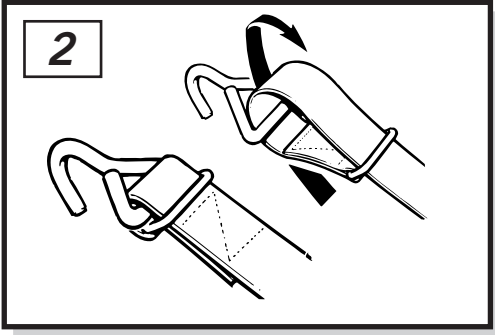
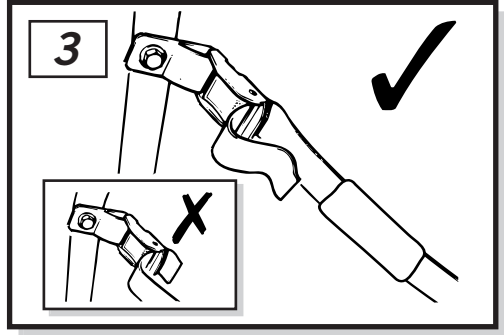


Position the assembled carrier on a clean surface as illustrated. Release the 2 ratchet adjusters and rotate the carrier through 90° and lock in position. The quick release action should be firm for both opening and closing.

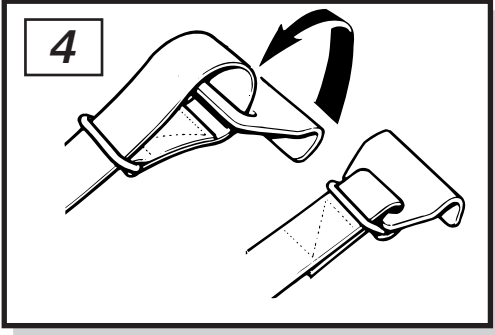
The tension may be set by releasing the handle and turning clockwise. Checking that the quick release handle will lock firmly and securely onto the tubing of the carrier on each full rotation.



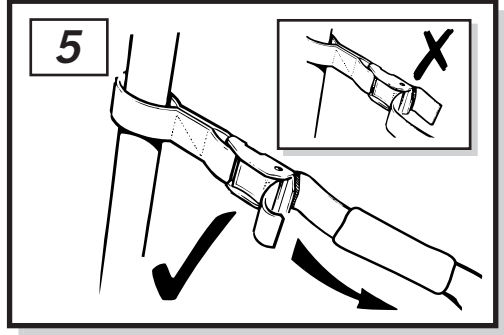
Lower strap assembly
Select 2 x 95cm straps and assemble the chassis hooks as illustrated.
Warning: Ensure that the straps are fully tightened on the chassis hooks.



Slide plastic ties onto the straps and feed the strap through the lower set of cambuckles.
Warning: Ensure that the straps are inserted through the cambuckles in the correct direction.



Side strap assembly
Select 2 x 95cm straps and assemble panel hooks as illustrated.
Note: Ensure that the straps are fully tightened on the panel hooks.

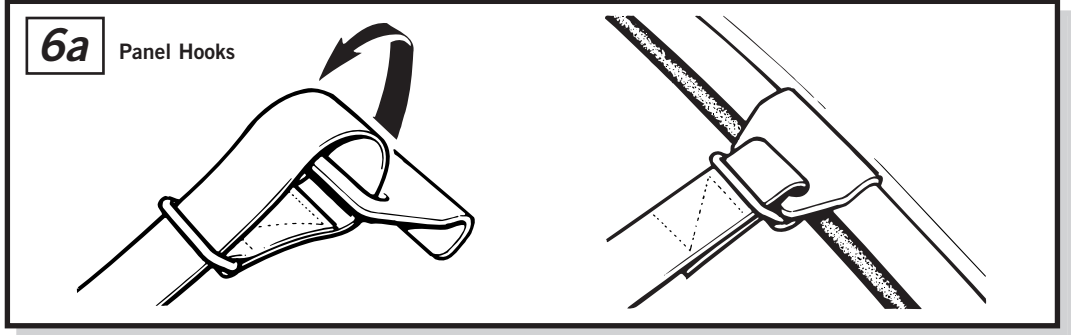


Slide plastic ties onto the straps and feed the strap through the middle set of cambuckles.
Warning: Ensure that the straps are inserted through the cambuckles in the correct direction.

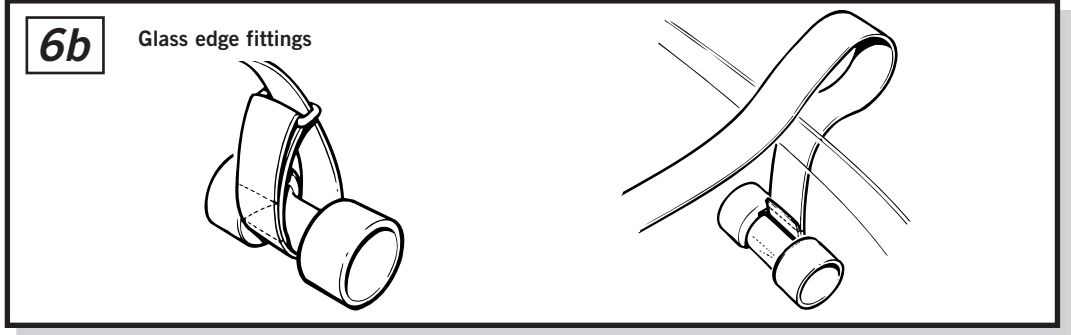
Attachment of the upper straps to the vehicle.



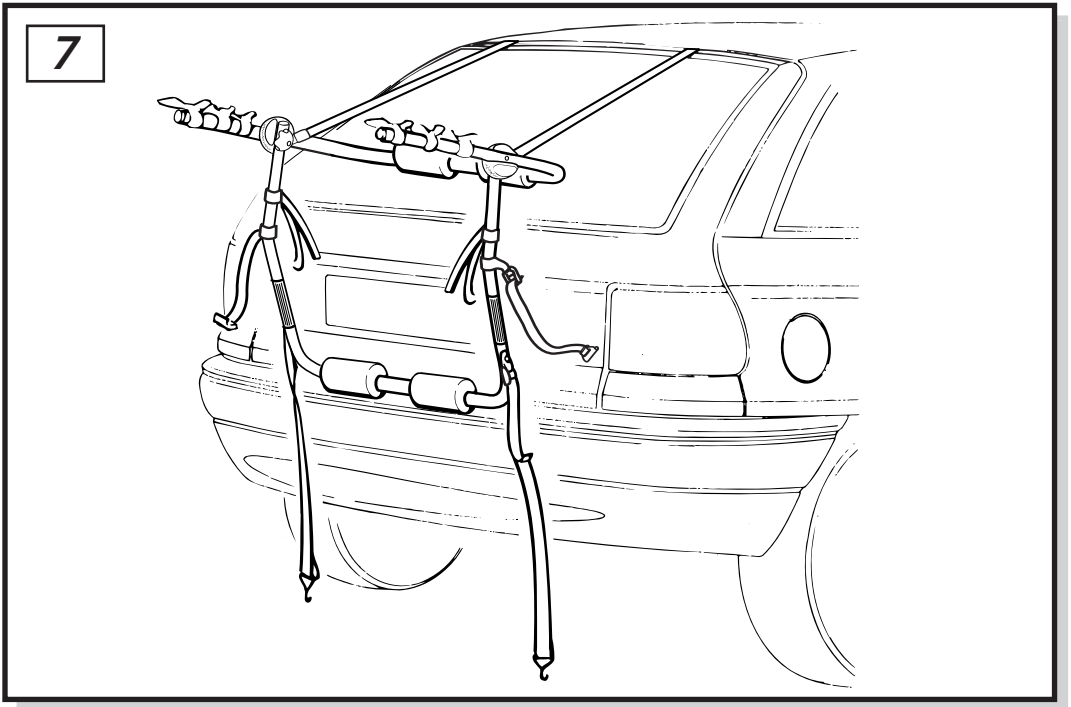
For the majority of vehicles with metal edged boot lids or tailgates, the panel hooks should be used, 6a.
If the tailgate of your vehicle is made of plastic composite or has glass/plastic edges you must use the glass edge fixings, 6b.



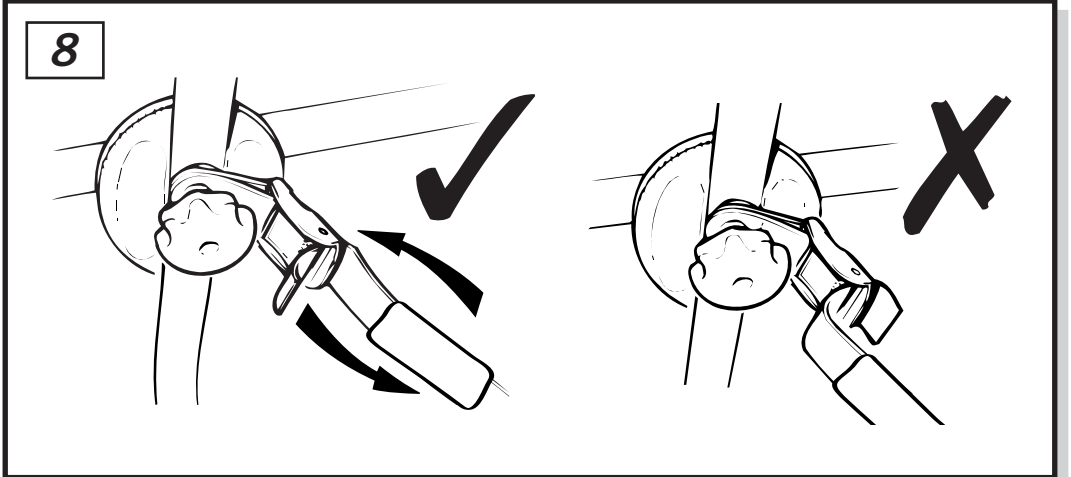
Panel Hooks
Select 2 x 160cm straps and 2 x panel hooks. Assemble the panel hooks as illustrated. Ensure that the straps are fully tightened on the panel hooks. Position the panel hooks on the top/front edge of your tailgate/boot.
Note: Due to the close panel tolerances of some vehicles, to aid attachment of the panel hooks, it may be necessary to partially open the boot/tailgate to increase clearance. Alternatively slide the panel hooks into position from areas of greater clearance.



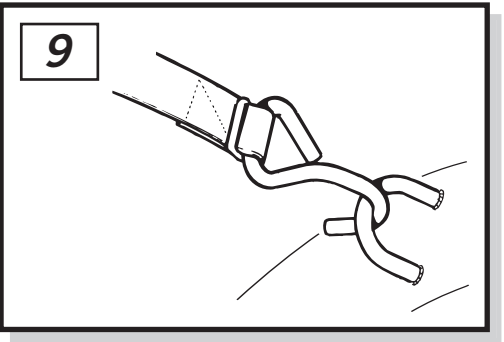
Glass edge fittings
Select 2 x 160cm straps and assemble dumbbells as illustrated.
Open the tailgate, and from inside your vehicle thread the straps over the top edge leaving the dumbbells hanging free. Carefully close the tailgate then gently pull the straps until the dumbbells sit firmly against the interior trim.



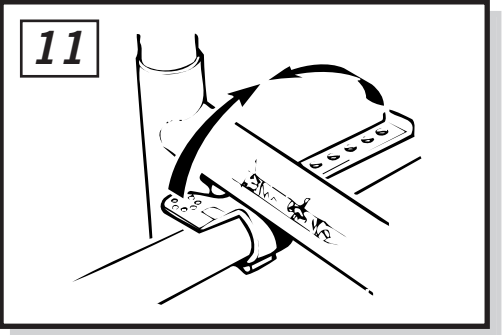
Offer the carrier to the vehicle with the lower tube resting on the upper area of the bumper. If necessary adjust the upper arm to sit against the tailgate of your vehicle or the upper surface of the boot lid. The carrier main frame should be leaning towards your vehicle with reasonable clearance, typically approx. 8cm (3 inches).
This will reduce as the straps are tightened. Ensure the cycle support arms point slightly upwards. Fully tighten all quick release adjusters.



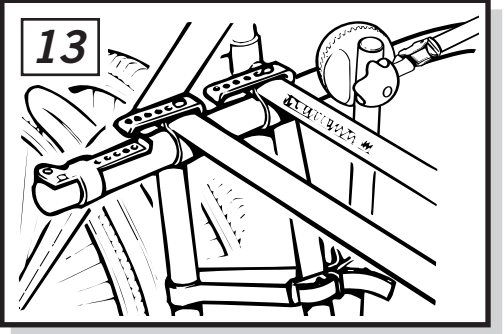
Slide plastic ties onto the straps and connect the top straps to the carrier by threading through the top set of cambuckles. Pull the straps through until the cycle carrier is loosely supported in position.
Warning: Ensure that the straps are inserted through the cambuckles in the correct direction.



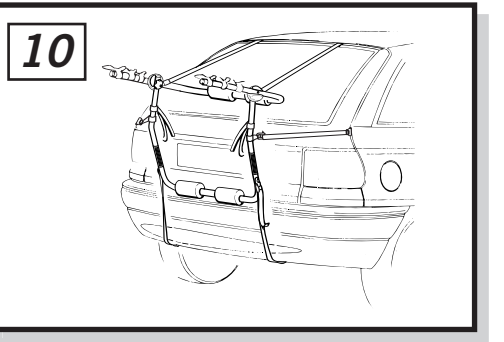
Position the lower strap chassis hooks to an appropriate location under the car for example; towing eye, steel chassis section or bumper support.
Note: It is vital that you use a strong metal location to secure these chassis hooks. Ensure the webbing straps do not touch the vehicle exhaust.



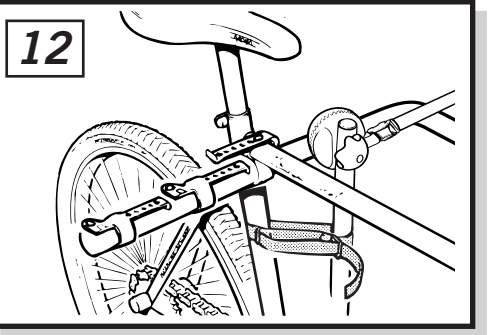
Position your cycle(s) into the saddle area of the frame locator. Pass the webbing strap over the frame of the cycle and thread through the metal loop. Pull the strap back tightly and press the hook and loop fastener to secure.
Note: There must be a minimum 45mm of overlap (See Diagram). The straps supplied with this product are suitable for cycle frames up to 40mm in diameter. For larger frames, longer straps are available as an accessory. Please contact your nearest Halfords store.



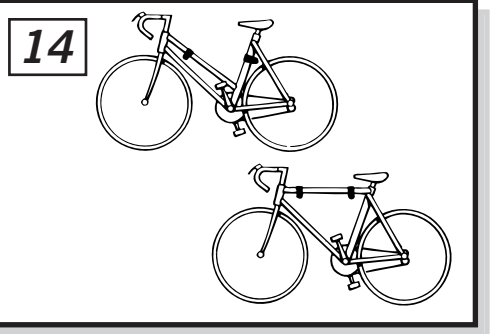
When carrying a second or third cycle, feed the straps around all cycles, and fully tighten. To reduce obstruction from the handle bars alternate the direction of each cycle during loading.



Position the side panel hooks on the edges of the tailgate/boot. Tighten all straps alternately. Check that the carrier sits firmly in position and there is a minimum 5cm (2 inches) clearance between main carrier frame and your vehicle.



Using the fitted webbing straps, secure the first cycle to the carrier main frame.



The cycle frame locators can be adjusted to best suit the angle of ladies' and children's etc, cycle frames.
IMPORTANT: Re-tighten all cycle carrier-webbing straps after loading the cycle(s). Do not fully open your tailgate with the panel hooks in position.

Special Recommendations

- 1 To ensure full compliance with the road traffic regulations, the use of a lighting board/number plate is required if your vehicle's existing lighting/number plate is obscured by the use of the carrier.

1 Drive with care, the handling characteristics of your vehicle will be affected when carrying cycles, (e.g. cornering, braking, side winds etc).
- 1 Retain these instructions for future reference, ensure that any other users of the cycle carrier are familiar with their contents.

1 The carrier may obstruct the rear view window wiper of your vehicle. DO NOT operate the wiper with the carrier fitted.

Important

- 1 Avoid any vehicle bodywork of insufficient strength, trim and items such as aerofoils or spoilers.

1 Do not exceed 45kg maximum load (3 adult cycles).

1 Carrier straps must always be re-tightened after cycles have been mounted to the carrier.

1 After driving for a few miles STOP and check that all straps are secure and tight. If necessary, tighten the straps and tidy away any loose ends. This must be repeated at suitable intervals depending on the nature of the road.
- 1 When positioning cycles on the carrier ensure that they do not project beyond the profile of the vehicle and that no part of any cycle can touch the paintwork.

1 Do not open tailgate when carrier is fitted to your vehicle.

1 Straps should be checked routinely for signs of wear and abrasion, and any worn straps must be replaced.

1 Do not position webbing straps or the cycle tyres close to the vehicle exhaust.



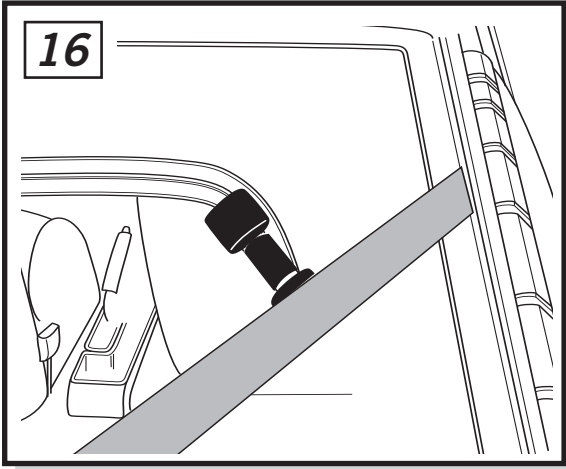
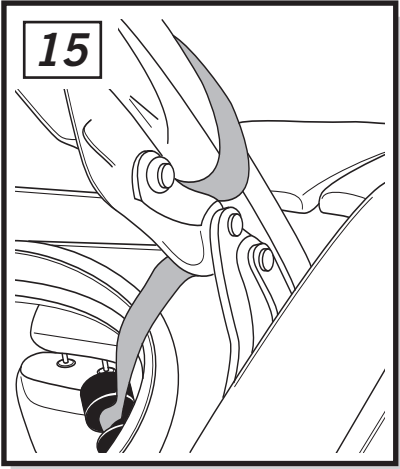
Paddy Hopkirk Limited
Eden Way, Pages Industrial Park
Leighton Buzzard, Bedfordshire, LU7 4TZ England
Telephone: 01525 850800 Fax: 01525 850808

Special Fitting Instructions

For use when fitting rear cycle carriers to the Renault Laguna 5dr. Hatch

Due to the rubber moulding running around the edge of the rear window, mounting of the top straps along the top edge of the rear window can cause deformation and eventually damage to the moulding.

To eliminate this we advise mounting the carrier top straps as detailed in this special instruction.

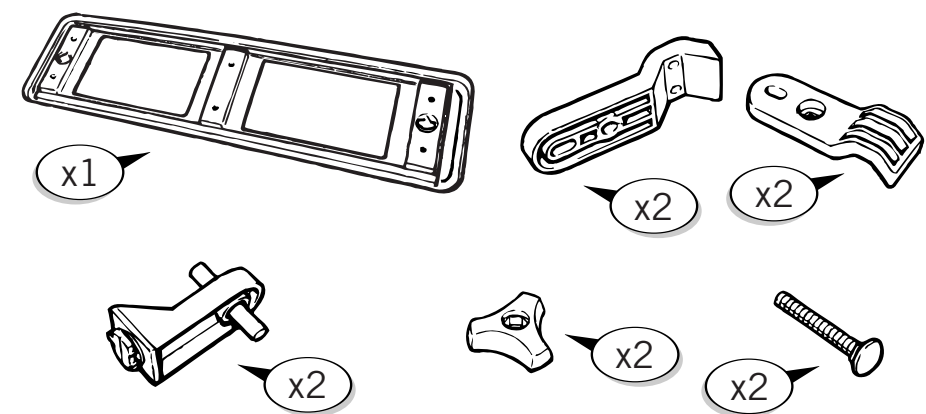


Feed the top straps through the tailgate hinges as shown (one strap each side), leaving the glass anchor tube hanging freely inside (Fig 15). Carefully close hatch and then pull free ends of straps trapping anchor tubes against the interior trim. (Fig 16). Attach both straps to cycle carrier and refer to the cycle carrier instructions for all remaining fitting instructions.

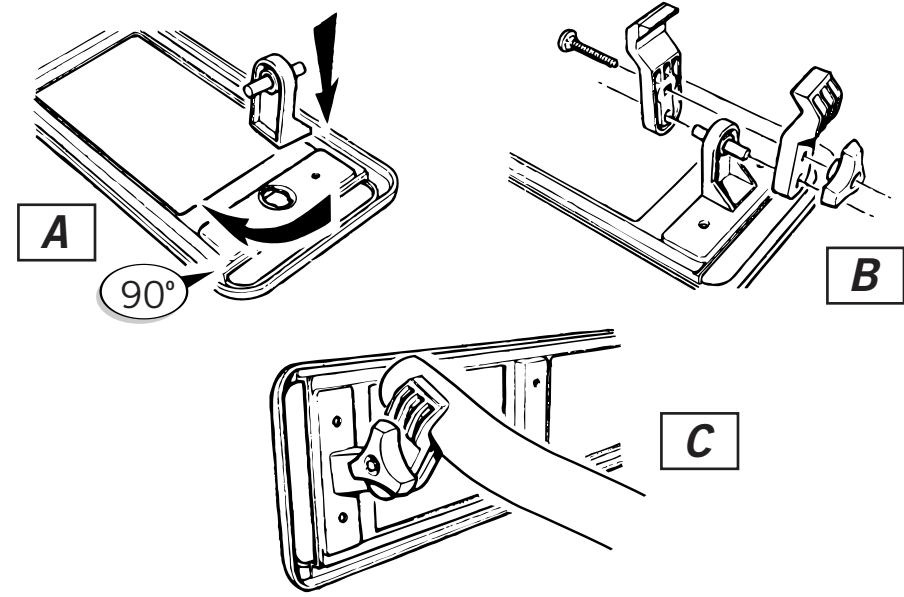
*Note: The manufacturer operates a policy of continuous development, and reserves the right to alter specifications without notice.
In the event of fitting difficulties, telephone our helpline on 01525 850800.*

Number Plate Fitting Instructions

Number Plate Kit Contents



Assembly Instructions



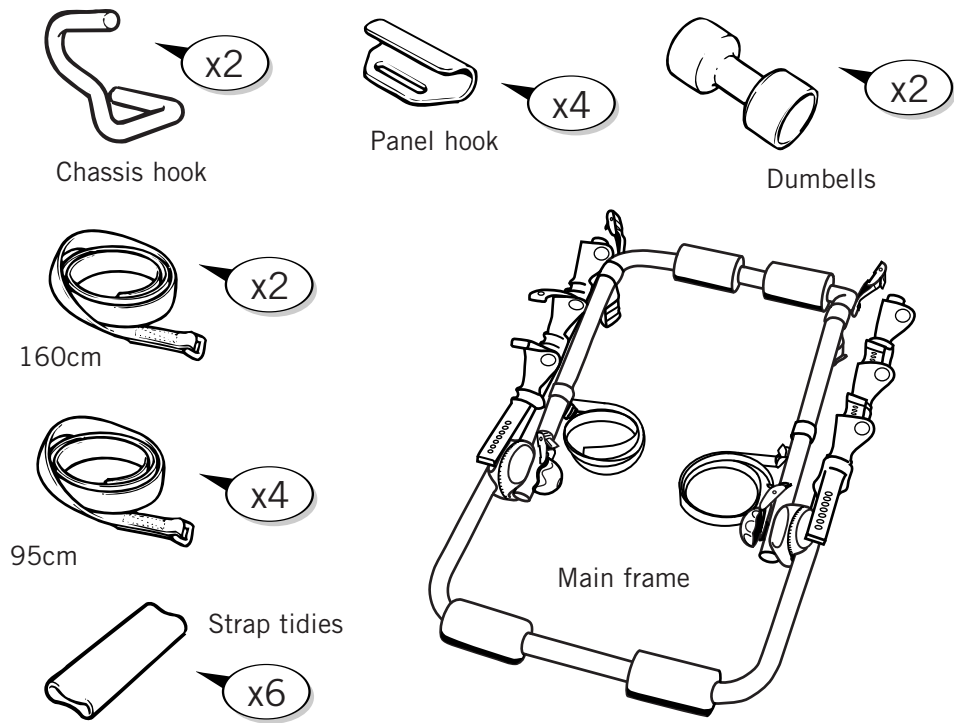
CM03AN Three Cycle Carrier Fitting Instructions

Please follow instructions carefully to ensure the safety of yourself and other road users. The initial assembly and fitting of this carrier will take approximately 15 minutes.

Before you begin:

- 1 Make sure all parts are included in the package.
- 1 Ensure that the vehicle boot lid/rear bumper are free from dirt and grime.

Kit Contents



Please note: This carrier is not suitable for the Citroën AX